

Anti ANP32A Antibody

Catalog No: tcsa19599



Available Sizes

Size: 100μl



Specifications

Application:

WB, IHC, IF

Species Reactivity:

Human, Mouse, Rat

Host Species:

Rabbit

Immunogen / Amino acids:

Recombinant protein of human ANP32A

Conjugation:

Unconjugated

Clonality:

Polyclonal

Isotype:

IgG

Form:

Liquid

Storage Buffer:

PBS with 0.02% sodium azide, 50% glycerol, pH7.3.

Recommended Dilution:

WB 1:500 - 1:2000

IHC 1:50 - 1:200

IF 1:50 - 1:200

Storage Instruction:

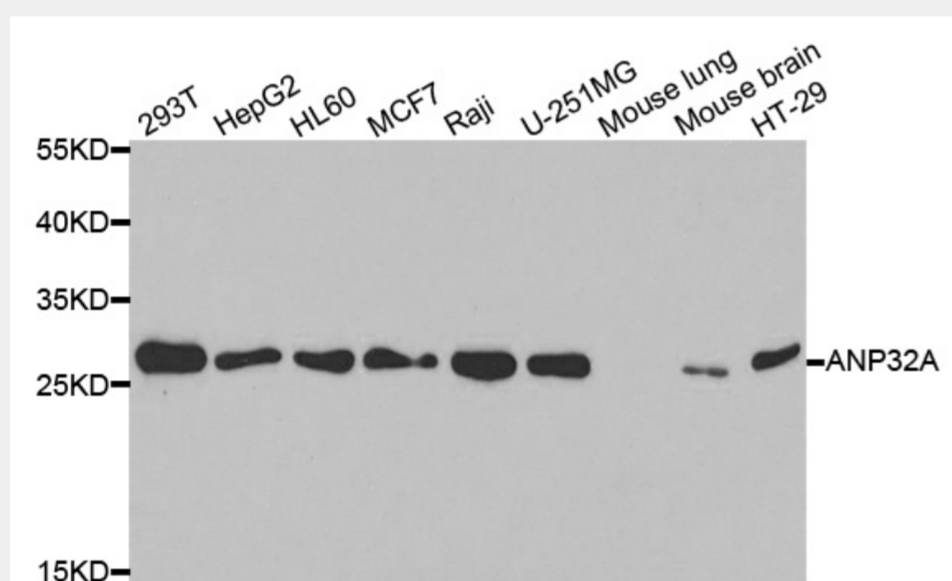
Store at -20C. Avoid freeze / thaw cycles.

Alternative Names:

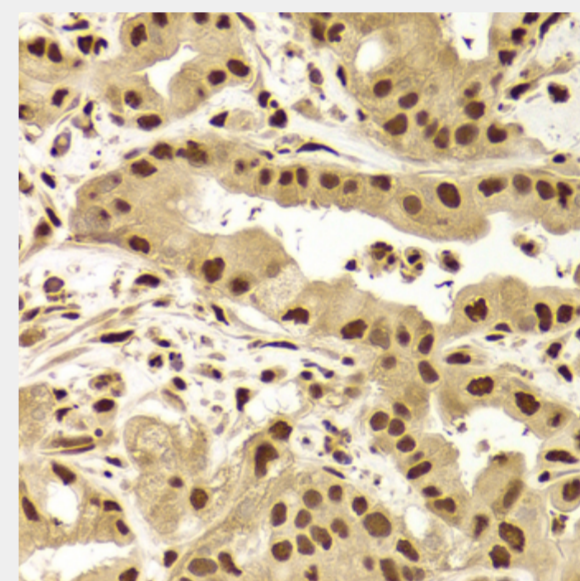
ANP32A antibody; Acidic leucine-rich nuclear phosphoprotein 32 family member A antibody; Acidic nuclear phosphoprotein pp32 antibody; pp32 antibody; Leucine-rich acidic nuclear protein antibody; LANP antibody; Mapmodulin antibody; Pot

SwissProt:

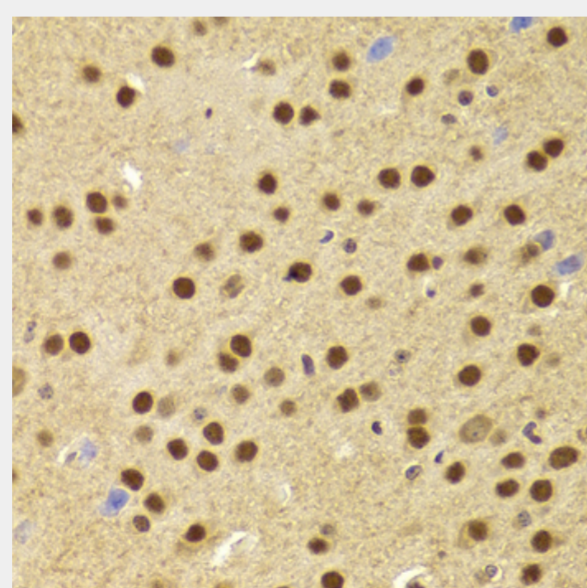
P39687



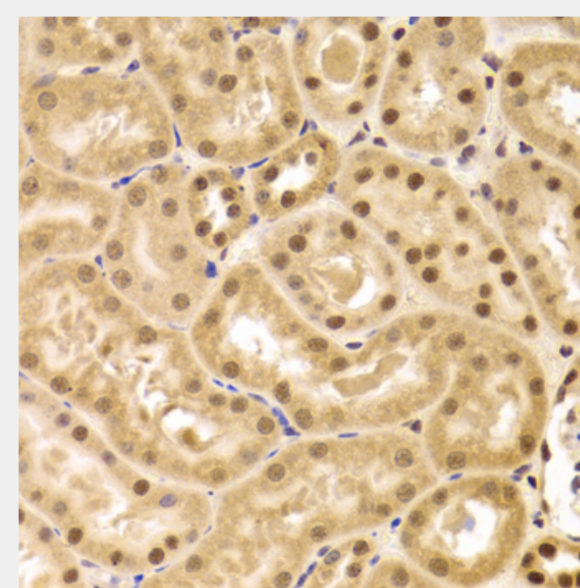
Western blot analysis of extracts of various cell lines, using ANP32A antibody at 1:1000 dilution. Secondary antibody: HRP Goat Anti-Rabbit IgG (H+L) at 1:10000 dilution. Lysates/proteins: 25ug per lane. Blocking buffer: 3% nonfat dry milk in TBST. Detection: ECL Basic Kit. Exposure time: 30s.



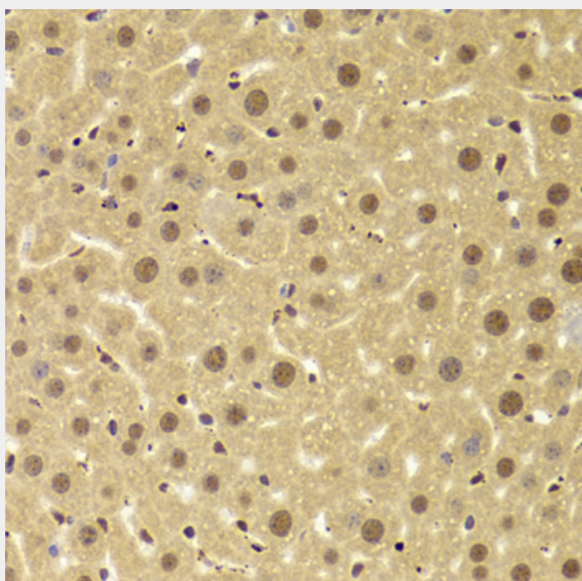
Immunohistochemistry of paraffin-embedded human liver cancer using ANP32A Antibody at dilution of 1:100 (40x lens).



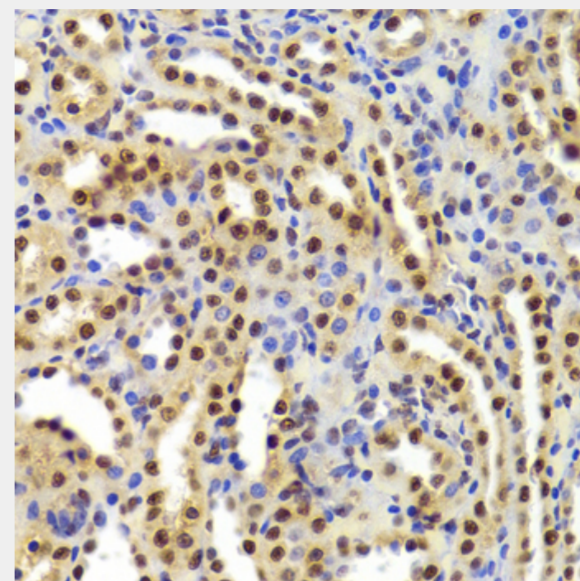
Immunohistochemistry of paraffin-embedded mouse brain using ANP32A Antibody at dilution of 1:100 (40x lens).



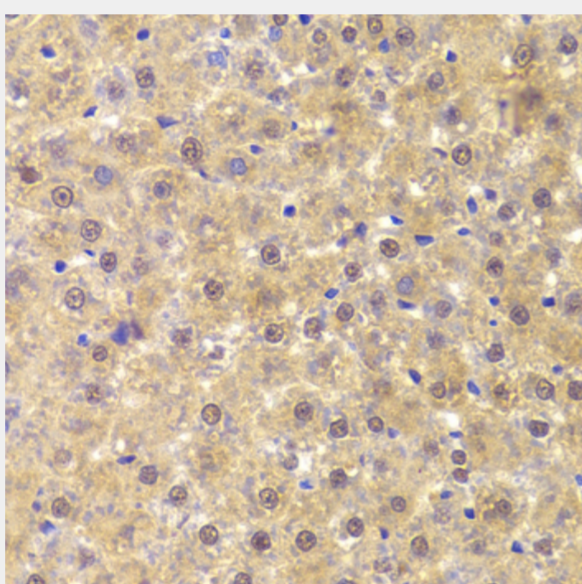
Immunohistochemistry of paraffin-embedded mouse kidney using ANP32A Antibody at dilution of 1:100 (40x lens).



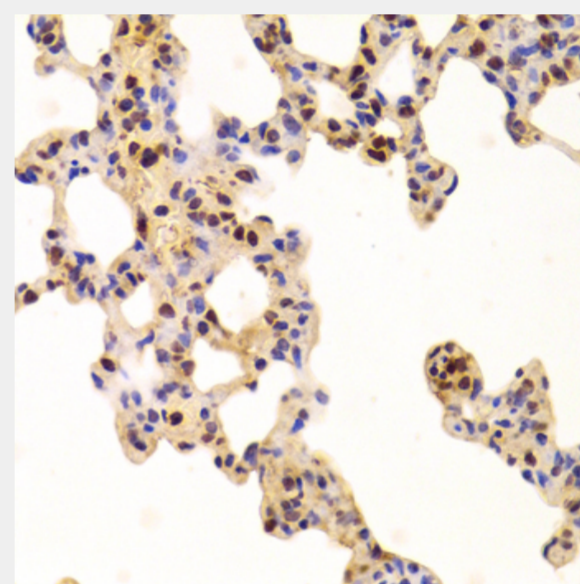
Immunohistochemistry of paraffin-embedded mouse liver using ANP32A Antibody at dilution of 1:100 (40x lens).



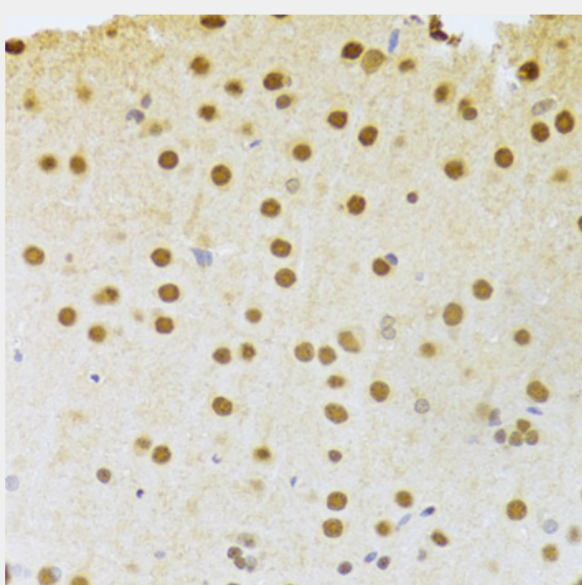
Immunohistochemistry of paraffin-embedded rat kidney using ANP32A Antibody at dilution of 1:100 (40x lens).



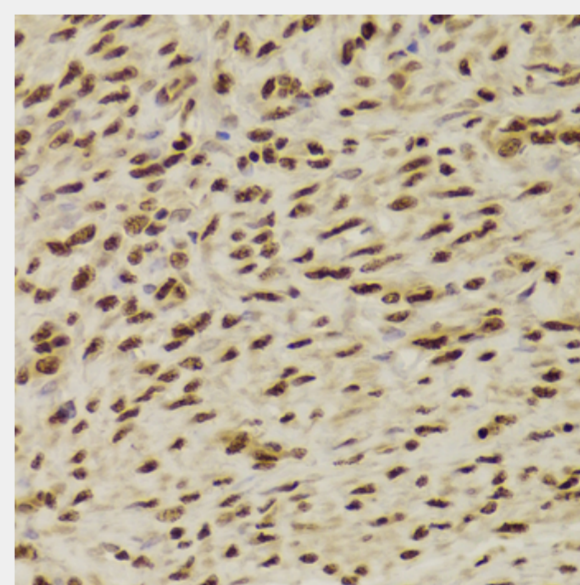
Immunohistochemistry of paraffin-embedded rat liver using ANP32A Antibody at dilution of 1:100 (40x lens).



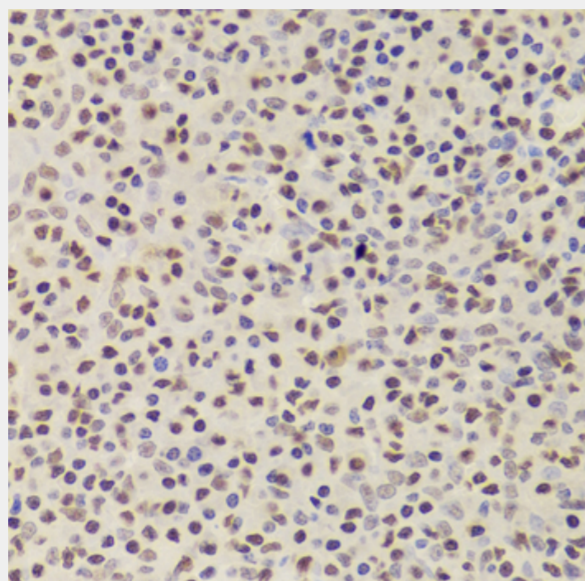
Immunohistochemistry of paraffin-embedded rat lung using ANP32A Antibody at dilution of 1:100 (40x lens).



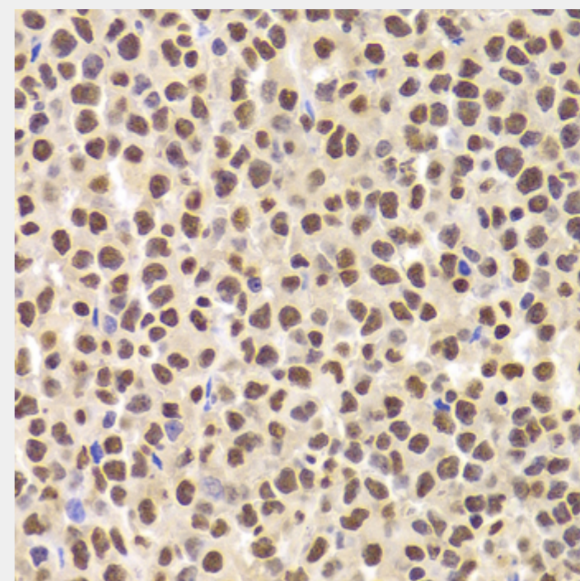
Immunohistochemistry of paraffin-embedded rat brain using ANP32A Antibody at dilution of 1:100 (40x lens).



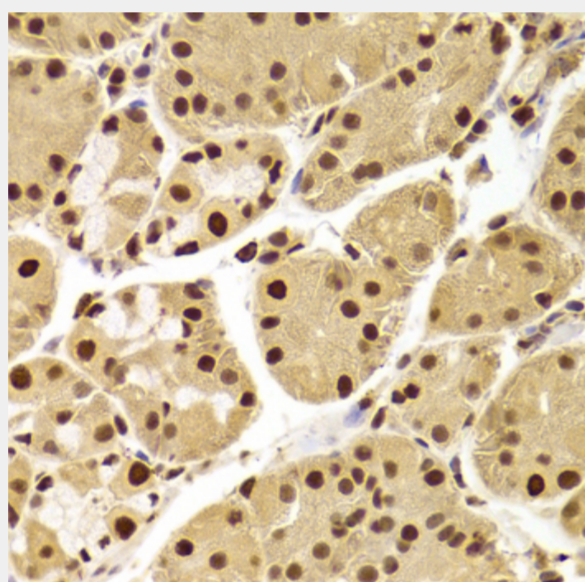
Immunohistochemistry of paraffin-embedded human adenomyosis using ANP32A Antibody at dilution of 1:100 (40x lens).



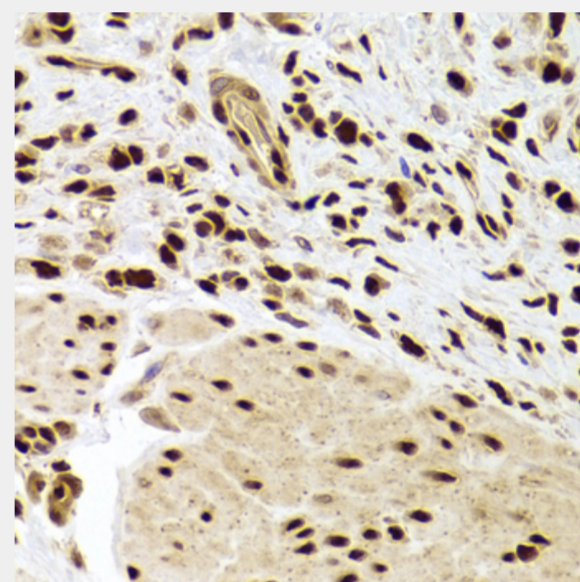
Immunohistochemistry of paraffin-embedded human amygdalitis using ANP32A Antibody at dilution of 1:100 (40x lens).



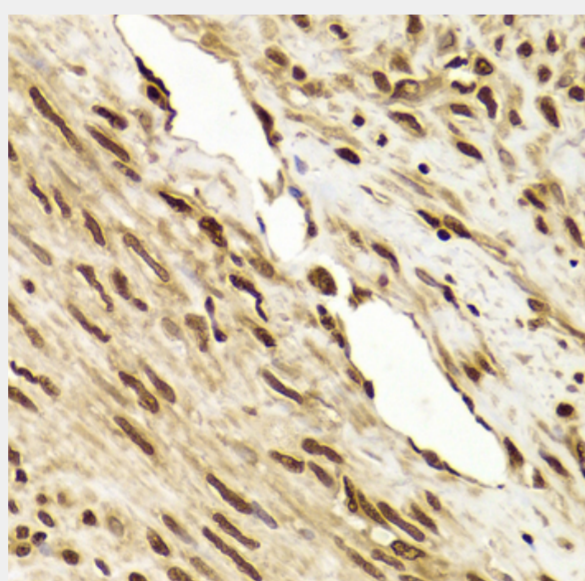
Immunohistochemistry of paraffin-embedded human B cell lymphoma using ANP32A Antibody at dilution of 1:100 (40x lens).



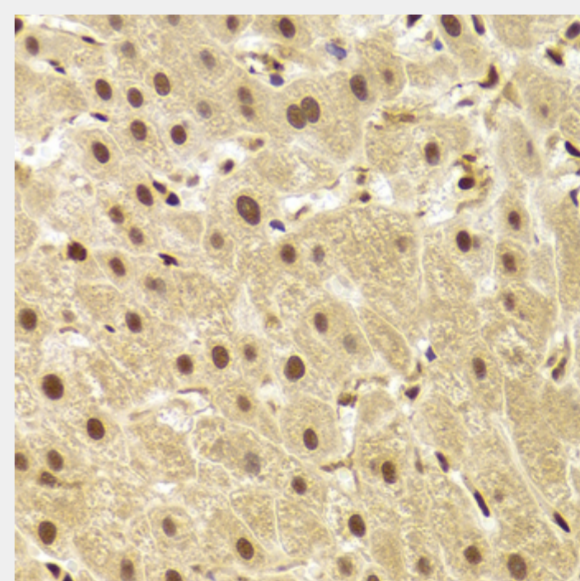
Immunohistochemistry of paraffin-embedded human stomach using ANP32A Antibody at dilution of 1:100 (40x lens).



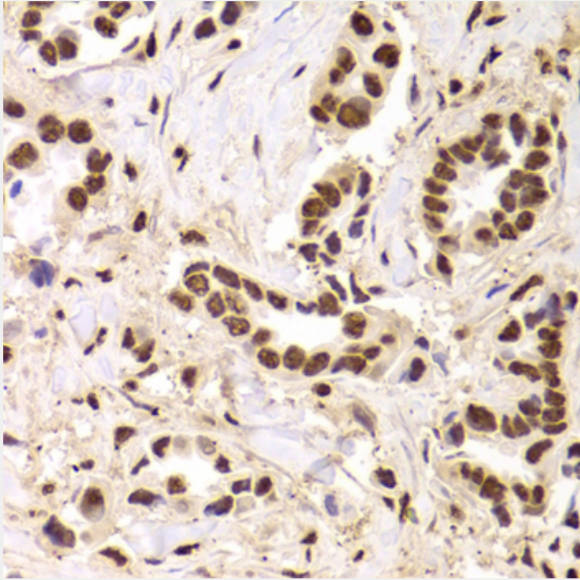
Immunohistochemistry of paraffin-embedded human gastric cancer using ANP32A Antibody at dilution of 1:100 (40x lens).



Immunohistochemistry of paraffin-embedded human leiomyoma of uterus using ANP32A Antibody at dilution of 1:100 (40x lens).



Immunohistochemistry of paraffin-embedded human liver injury using ANP32A Antibody at dilution of 1:100 (40x lens).



Immunohistochemistry of paraffin-embedded human breast cancer using ANP32A Antibody at dilution of 1:100 (40x lens).

All products are for RESEARCH USE ONLY. Not for diagnostic & therapeutic purposes!