

Anti SF3B2 Antibody

Catalog No: tcsa19443



Available Sizes

Size: 100μl



Specifications

Application:

WB, IHC, IF

Species Reactivity:

Human, Mouse, Rat

Host Species:

Rabbit

Immunogen / Amino acids:

Recombinant protein of human SF3B2

Conjugation:

Unconjugated

Clonality:

Polyclonal

Isotype:

IgG

Form:

Liquid

Storage Buffer:

PBS with 0.02% sodium azide, 50% glycerol, pH7.3.

Recommended Dilution:

WB 1:500 - 1:2000

IHC 1:50 - 1:200

IF 1:50 - 1:200

Storage Instruction:

Store at -20C. Avoid freeze / thaw cycles.

Alternative Names:

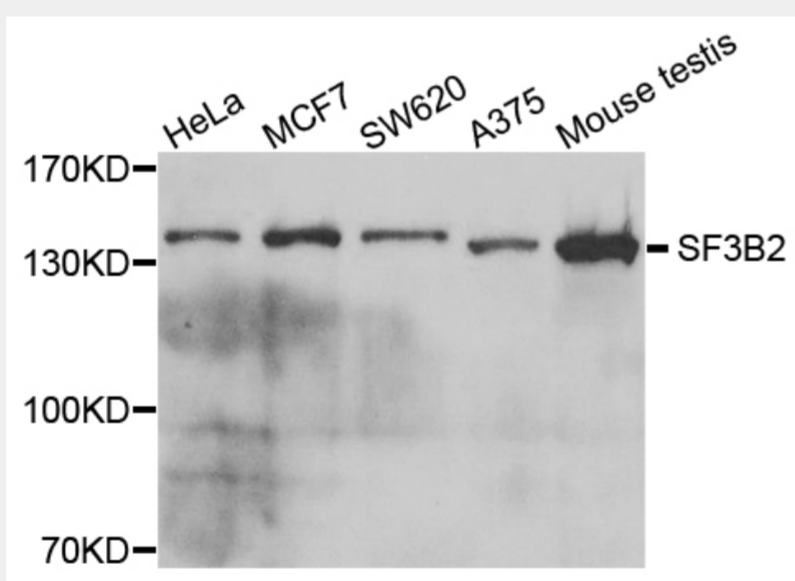
SF3B2 antibody; Splicing factor 3B subunit 2 antibody; Pre-mRNA-splicing factor SF3b 145 kDa subunit antibody; SF3b145 antibody; Spliceosome-associated protein 145 antibody; SAP 145 antibody; SF3B2 antibody; SAP145 antibody

SwissProt:

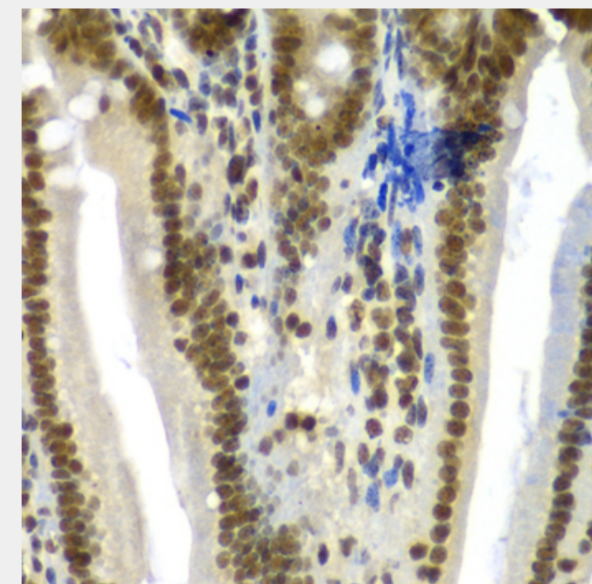
Q13435

Product Description

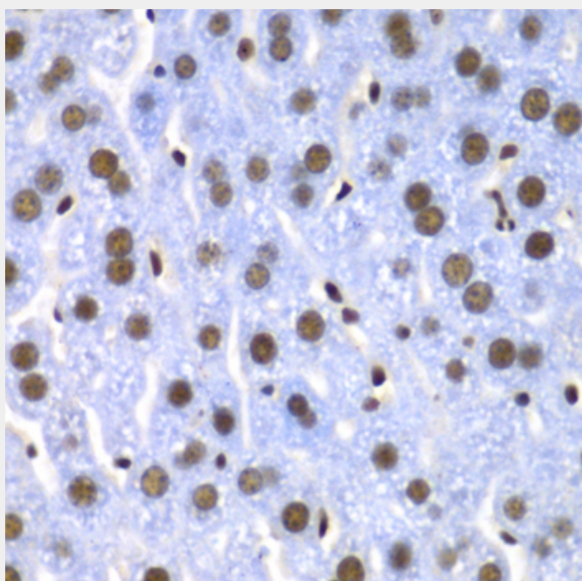
This gene encodes subunit 2 of the splicing factor 3b protein complex. Splicing factor 3b, together with splicing factor 3a and a 12S RNA unit, forms the U2 small nuclear ribonucleoproteins complex (U2 snRNP). The splicing factor 3b/3a complex binds pre-mRNA upstream of the intron's branch site in a sequence-independent manner and may anchor the U2 snRNP to the pre-mRNA. Splicing factor 3b is also a component of the minor U12-type spliceosome. Subunit 2 associates with pre-mRNA upstream of the branch site at the anchoring site. Subunit 2 also interacts directly with subunit 4 of the splicing factor 3b complex. Subunit 2 is a highly hydrophilic protein with a proline-rich N-terminus and a glutamate-rich stretch in the C-terminus.



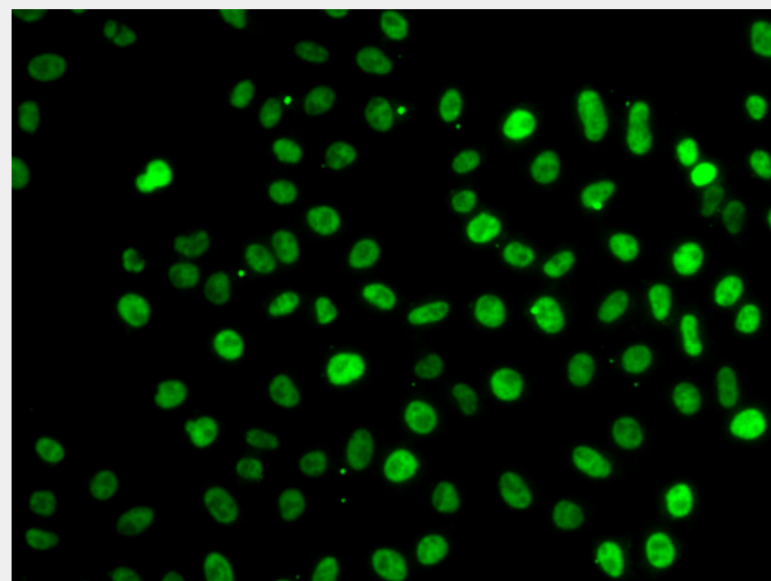
Western blot analysis of extracts of various cell lines, using SF3B2 antibody at 1:1000 dilution. Secondary antibody: HRP Goat Anti-Rabbit IgG (H+L) at 1:10000 dilution. Lysates/proteins: 25ug per lane. Blocking buffer: 3% nonfat dry milk in TBST. Detection: ECL Basic Kit. Exposure time: 5s.



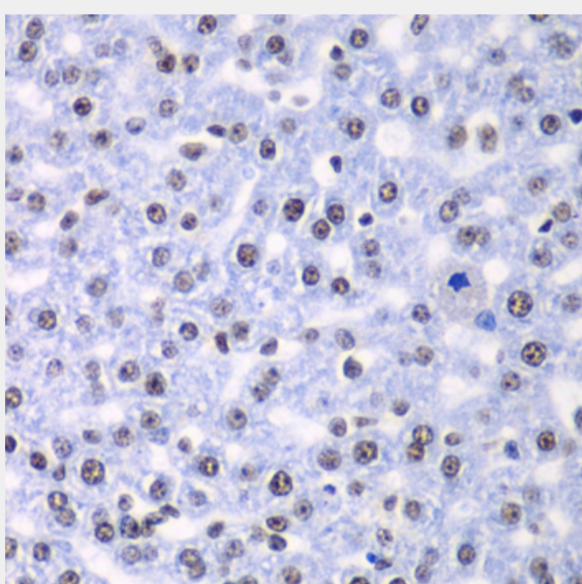
Immunohistochemistry of paraffin-embedded mouse Intestine using SF3B2 antibody at dilution of 1:100 (40x lens).



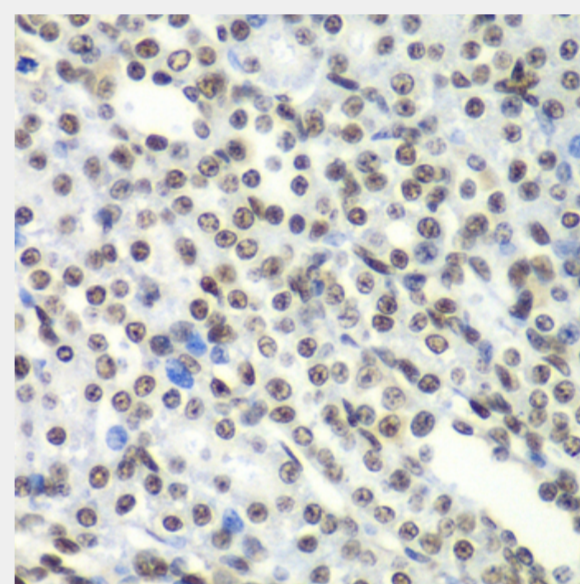
Immunohistochemistry of paraffin-embedded mouse liver using SF3B2 antibody at dilution of 1:100 (40x lens).



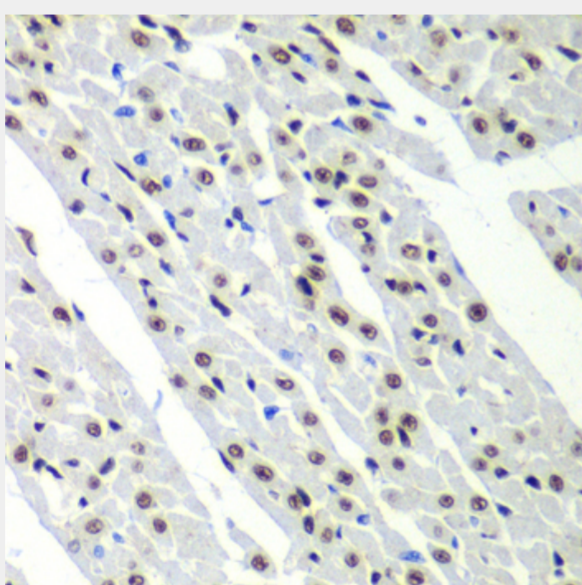
Immunofluorescence analysis of MCF-7 cells using SF3B2 antibody.



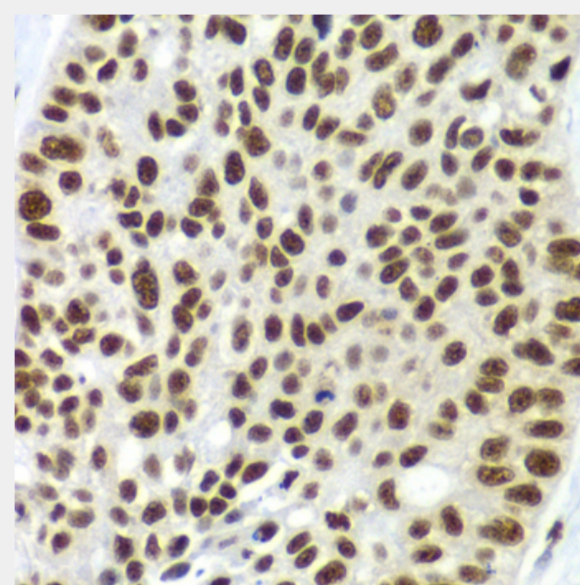
Immunohistochemistry of paraffin-embedded rat liver using SF3B2 antibody at dilution of 1:100 (40x lens).



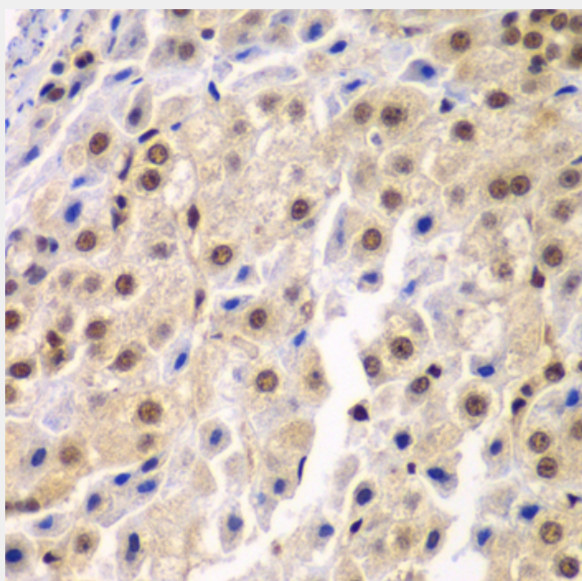
Immunohistochemistry of paraffin-embedded rat kidney using SF3B2 antibody at dilution of 1:100 (40x lens).



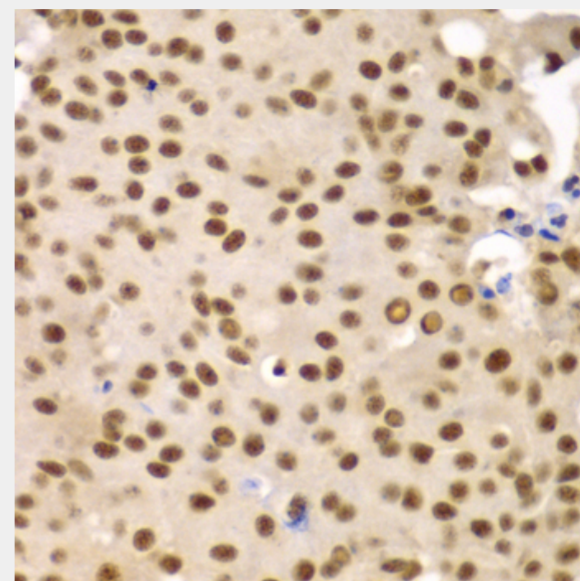
Immunohistochemistry of paraffin-embedded rat heart using SF3B2 antibody at dilution of 1:100 (40x lens).



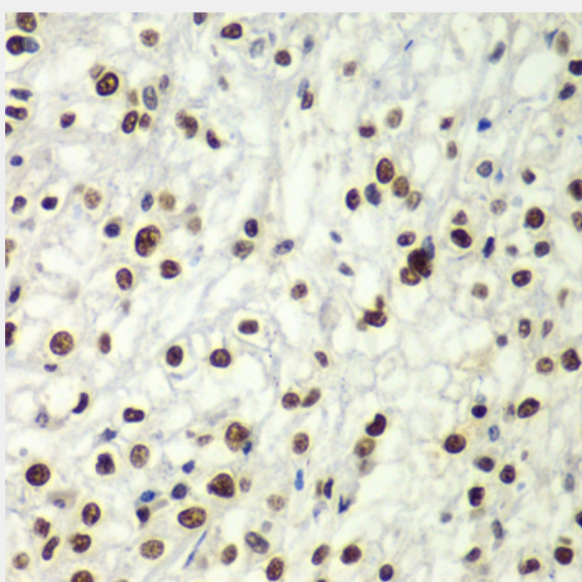
Immunohistochemistry of paraffin-embedded human lung cancer using SF3B2 antibody at dilution of 1:100 (40x lens).



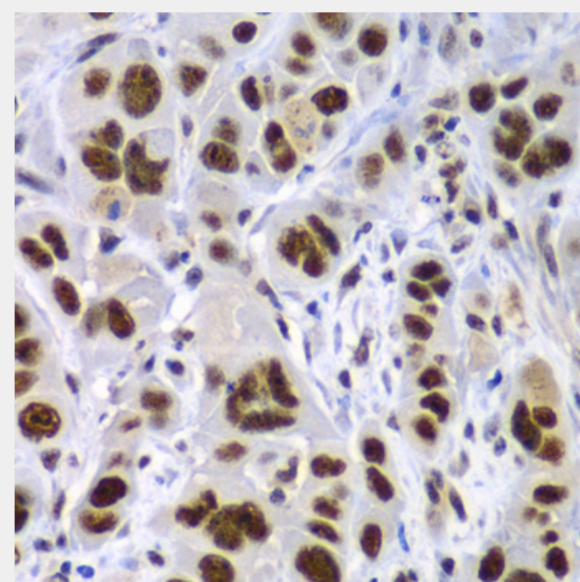
Immunohistochemistry of paraffin-embedded human liver cancer using SF3B2 antibody at dilution of 1:100 (40x lens).



Immunohistochemistry of paraffin-embedded human oophoroma using SF3B2 antibody at dilution of 1:100 (40x lens).



Immunohistochemistry of paraffin-embedded human kidney cancer using SF3B2 antibody at dilution of 1:100 (40x lens).



Immunohistochemistry of paraffin-embedded human gastric cancer using SF3B2 antibody at dilution of 1:100 (40x lens).

All products are for RESEARCH USE ONLY. Not for diagnostic & therapeutic purposes!