

Anti SUMO2 Antibody

Catalog No: tcsa19438



Available Sizes

Size: 100μl



Specifications

Application:

WB, IHC

Species Reactivity:

Human, Mouse, Rat

Host Species:

Rabbit

Immunogen / Amino acids:

Recombinant protein of human SUMO2

Conjugation:

Unconjugated

Clonality:

Polyclonal

Isotype:

IgG

Form:

Liquid

Storage Buffer:

PBS with 0.02% sodium azide, 50% glycerol, pH7.3.

Recommended Dilution:

WB 1:500 - 1:1000

IHC 1:50 - 1:100

Storage Instruction:

Store at -20C. Avoid freeze / thaw cycles.

Alternative Names:

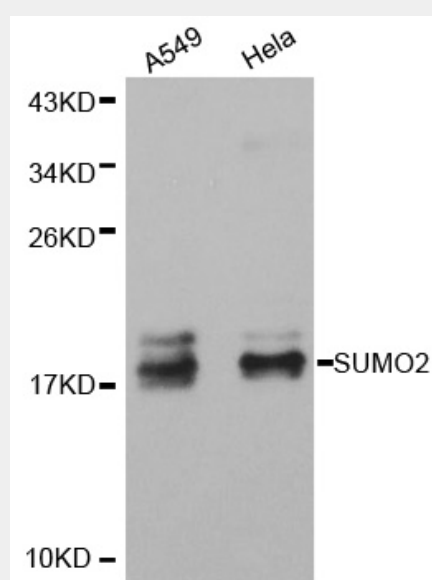
SUMO2 antibody; Small ubiquitin-related modifier 2 antibody; SUMO-2 antibody; HSMT3 antibody; SMT3 homolog 2 antibody; SUMO-3 antibody; Sentrin-2 antibody; Ubiquitin-like protein SMT3B antibody; Smt3B antibody; SUMO2 antibody

SwissProt:

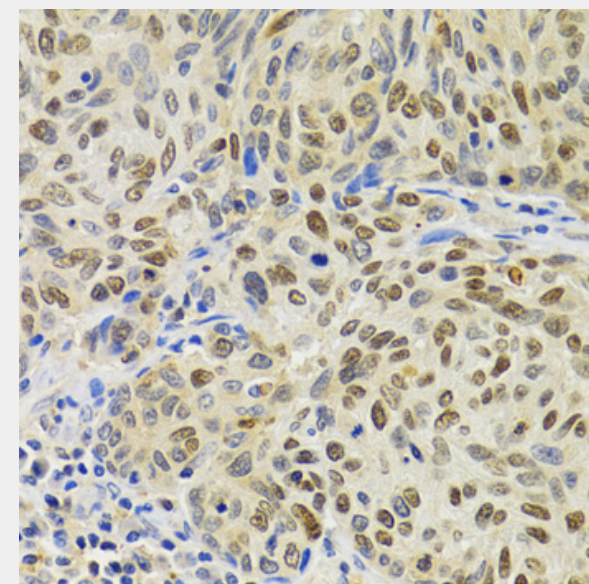
P61956

Product Description

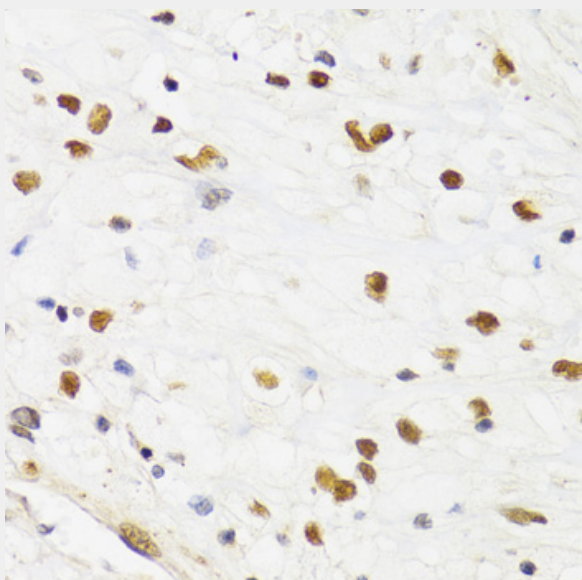
This gene encodes a protein that is a member of the SUMO (small ubiquitin-like modifier) protein family. It functions in a manner similar to ubiquitin in that it is bound to target proteins as part of a post-translational modification system. However, unlike ubiquitin which targets proteins for degradation, this protein is involved in a variety of cellular processes, such as nuclear transport, transcriptional regulation, apoptosis, and protein stability. It is not active until the last two amino acids of the carboxy-terminus have been cleaved off. Numerous pseudogenes have been reported for this gene. Alternate transcriptional splice variants, encoding different isoforms, have been characterized.



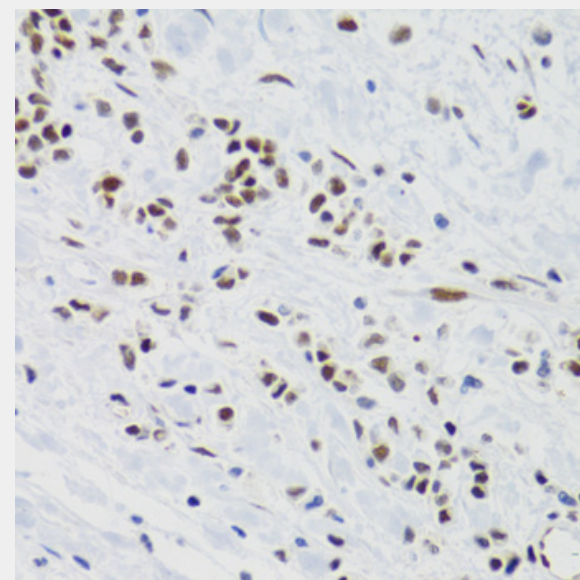
Western blot analysis of extracts of various cell lines, using SUMO2 antibody at 1:800 dilution. Secondary antibody: HRP Goat Anti-Rabbit IgG (H+L) at 1:10000 dilution. Lysates/proteins: 25ug per lane. Blocking buffer: 3% nonfat dry milk in TBST.



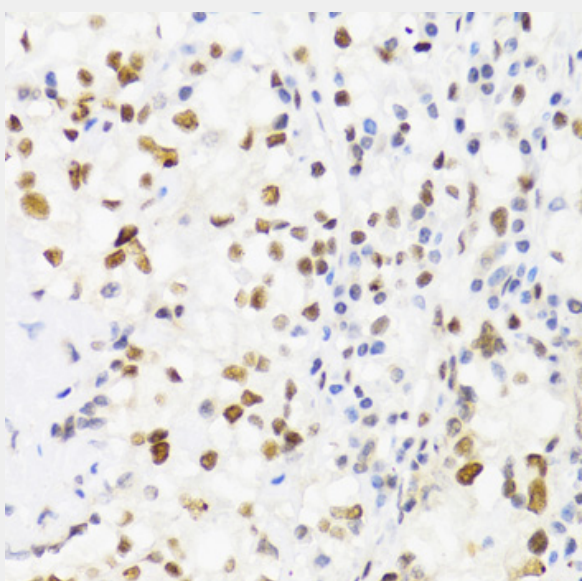
Immunohistochemistry of paraffin-embedded human lung cancer using SUMO2 Antibody at dilution of 1:100 (40x lens).



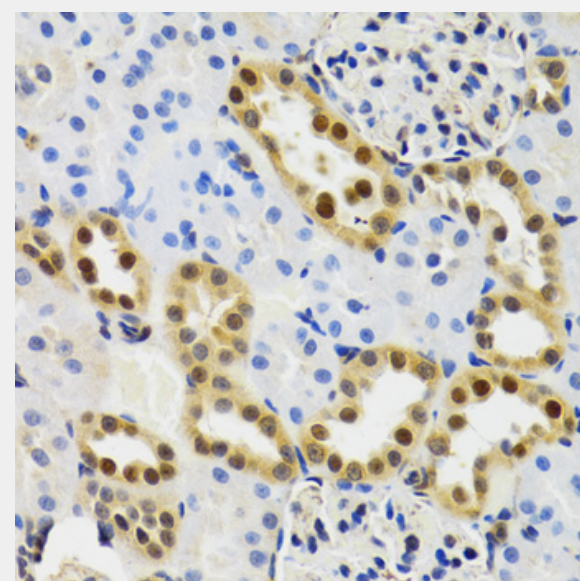
Immunohistochemistry of paraffin-embedded human brain cancer using SUMO2 Antibody at dilution of 1:100 (40x lens).



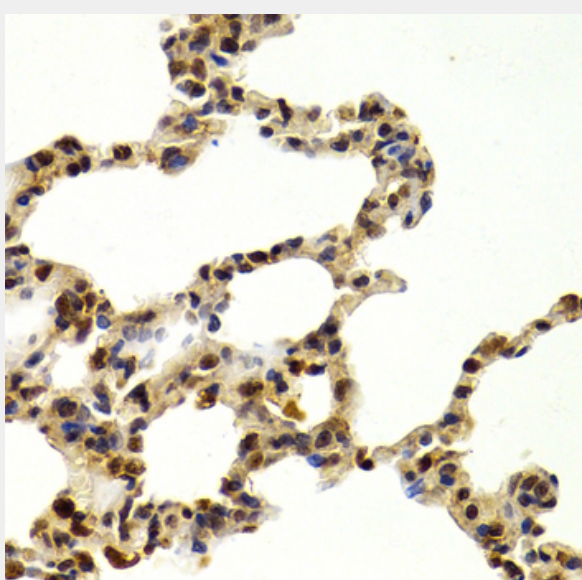
Immunohistochemistry of paraffin-embedded human breast cancer using SUMO2 Antibody at dilution of 1:100 (40x lens).



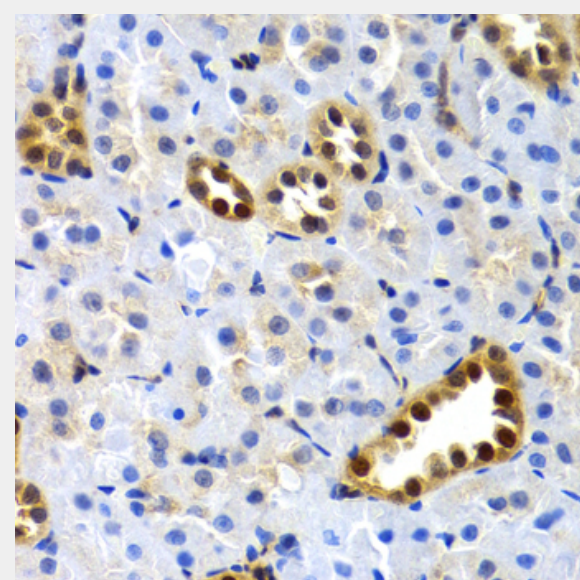
Immunohistochemistry of paraffin-embedded human kidney cancer using SUMO2 Antibody at dilution of 1:100 (40x lens).



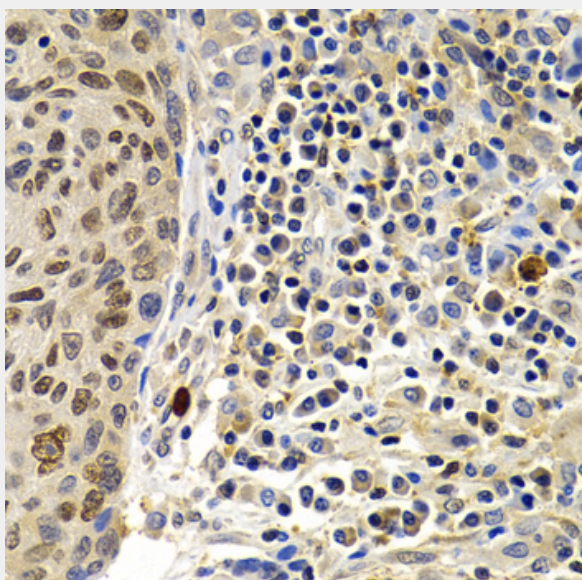
Immunohistochemistry of paraffin-embedded mouse kidney using SUMO2 Antibody at dilution of 1:100 (40x lens).



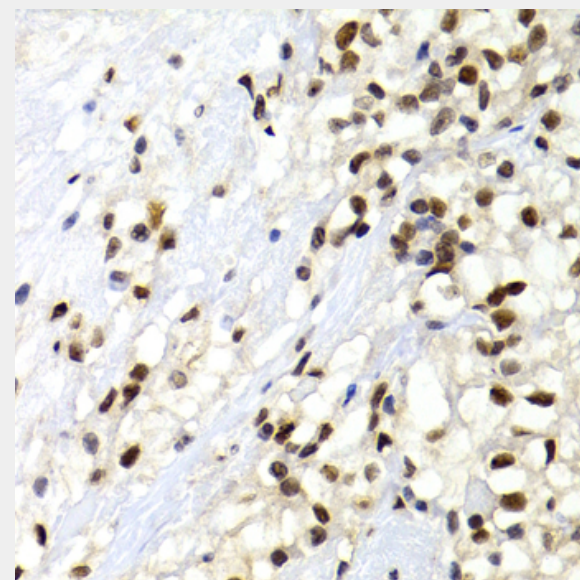
Immunohistochemistry of paraffin-embedded rat lung using SUMO2 Antibody at dilution of 1:200 (40x lens).



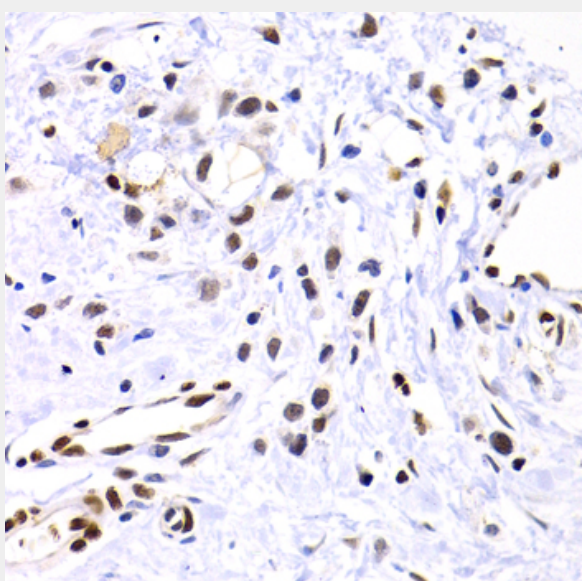
Immunohistochemistry of paraffin-embedded rat kidney using SUMO2 Antibody at dilution of 1:200 (40x lens).



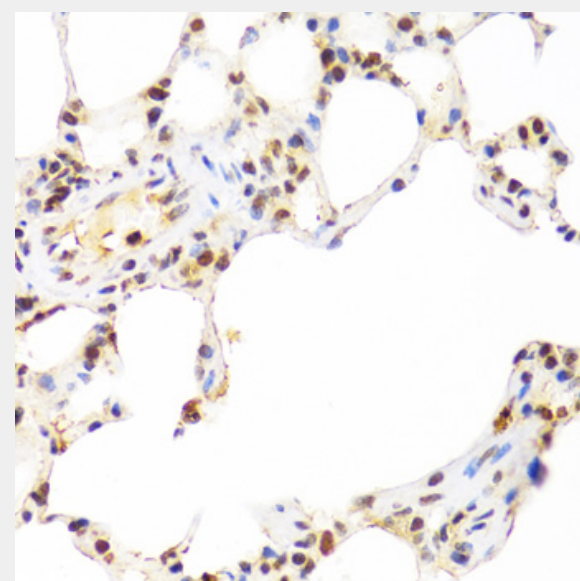
Immunohistochemistry of paraffin-embedded human lung cancer using SUMO2 Antibody at dilution of 1:200 (40x lens).



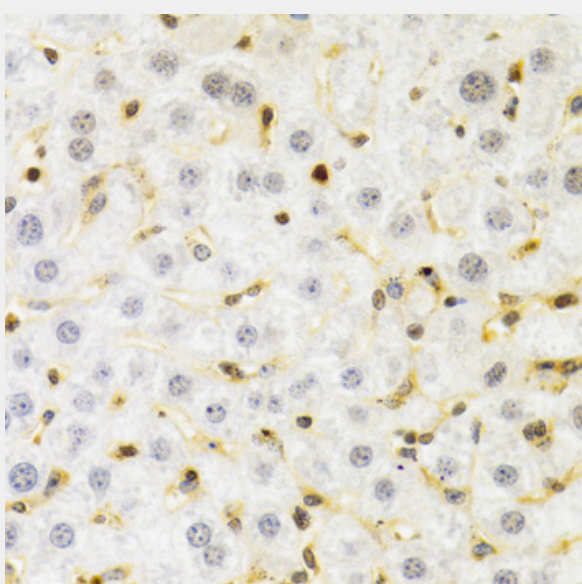
Immunohistochemistry of paraffin-embedded human kidney cancer using SUMO2 Antibody at dilution of 1:200 (40x lens).



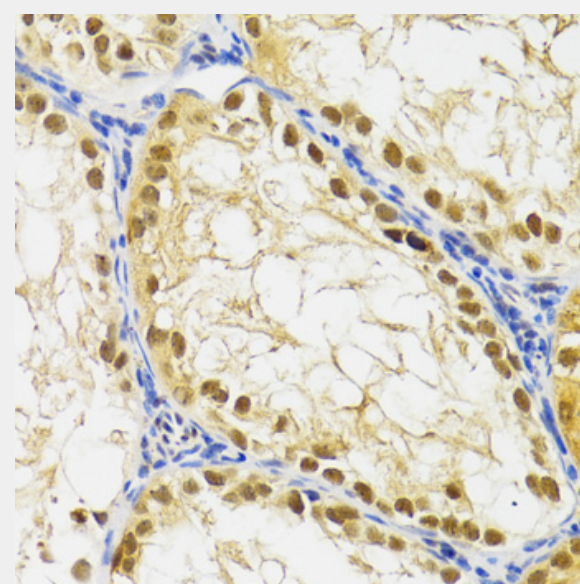
Immunohistochemistry of paraffin-embedded human gastric cancer using SUMO2 Antibody at dilution of 1:200 (40x lens).



Immunohistochemistry of paraffin-embedded rat lung using SUMO2 Antibody at dilution of 1:100 (40x lens).



Immunohistochemistry of paraffin-embedded rat liver using SUMO2 Antibody at dilution of 1:100 (40x lens).



Immunohistochemistry of paraffin-embedded rat testis using SUMO2 Antibody at dilution of 1:100 (40x lens).

All products are for RESEARCH USE ONLY. Not for diagnostic & therapeutic purposes!