

# Anti CHAF1B Antibody

Catalog No: tcsa19421



## Available Sizes

---

**Size:** 100µl



## Specifications

---

**Application:**

WB, IHC, IF

**Species Reactivity:**

Human, Mouse, Rat

**Host Species:**

Rabbit

**Immunogen / Amino acids:**

Recombinant protein of human CHAF1B

**Conjugation:**

Unconjugated

**Clonality:**

Polyclonal

**Isotype:**

IgG

**Form:**

Liquid

**Storage Buffer:**

PBS with 0.02% sodium azide, 50% glycerol, pH7.3.

**Recommended Dilution:**

WB 1:500 - 1:2000

IHC 1:50 - 1:200

IF 1:20 - 1:100

### Storage Instruction:

Store at -20C. Avoid freeze / thaw cycles.

### Alternative Names:

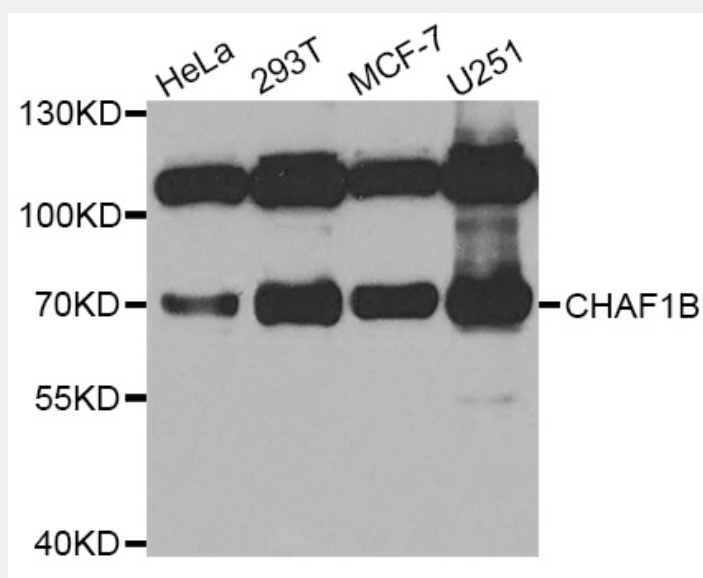
CHAF1B antibody; Chromatin assembly factor 1 subunit B antibody; CAF-1 subunit B antibody; Chromatin assembly factor I p60 subunit antibody; CAF-I 60 kDa subunit antibody; CAF-I p60 antibody; M-phase phosphoprotein 7 antibody; CHAF1B

### SwissProt:

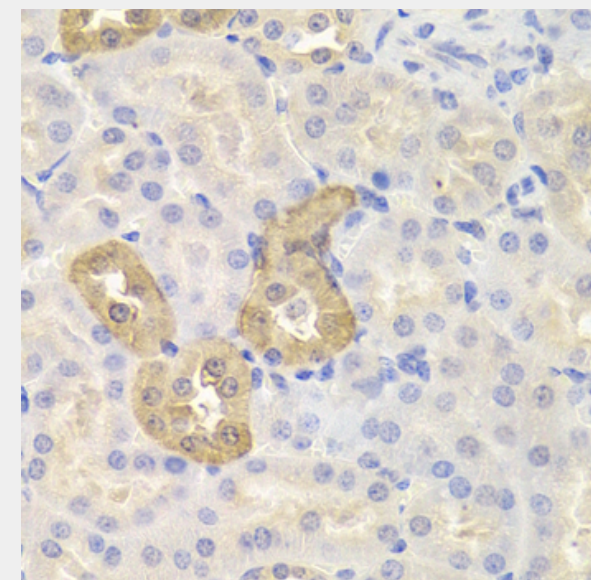
Q13112

## Product Description

Chromatin assembly factor I (CAF-I) is required for the assembly of histone octamers onto newly-replicated DNA. CAF-I is composed of three protein subunits, p50, p60, and p150. The protein encoded by this gene corresponds to the p60 subunit and is required for chromatin assembly after replication. The encoded protein is differentially phosphorylated in a cell cycle-dependent manner. In addition, it is normally found in the nucleus except during mitosis, when it is released into the cytoplasm. This protein is a member of the WD-repeat HIR1 family and may also be involved in DNA repair.

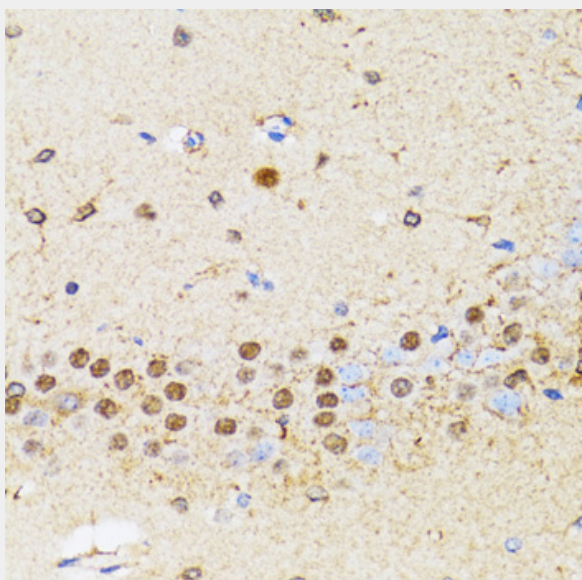


Western blot analysis of extracts of various cell lines, using CHAF1B antibody at 1:1000 dilution. Secondary antibody: HRP Goat Anti-Rabbit IgG (H+L) at 1:10000 dilution. Lysates/proteins: 25ug per lane. Blocking buffer: 3% nonfat dry milk in TBST. Detection: ECL Basic Kit. Exposure time: 60s.

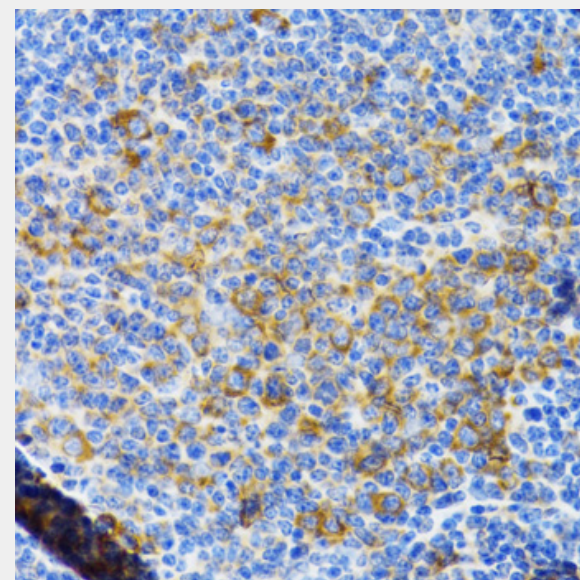


Immunohistochemistry of paraffin-embedded mouse kidney using CHAF1B antibody at dilution of 1:200 (40x lens).

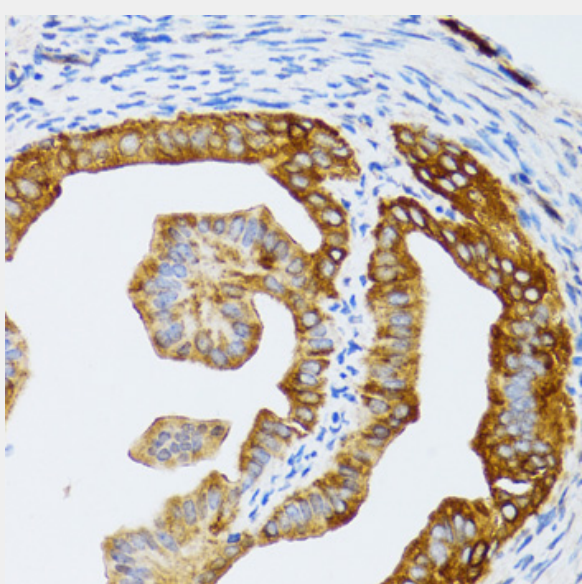




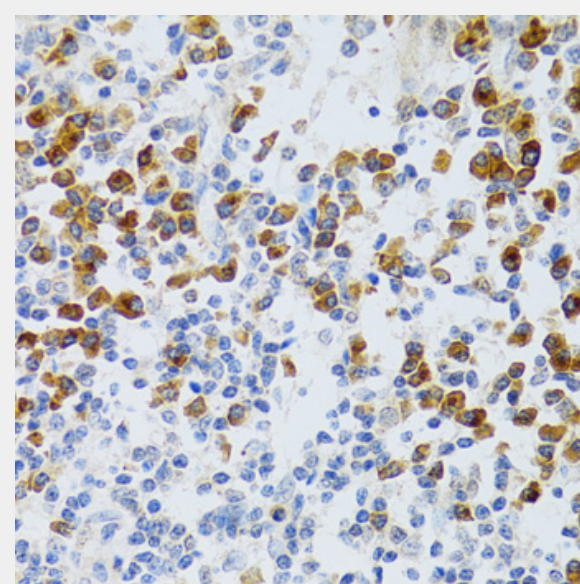
Immunohistochemistry of paraffin-embedded rat brain using CHAF1B antibody at dilution of 1:100 (40x lens).



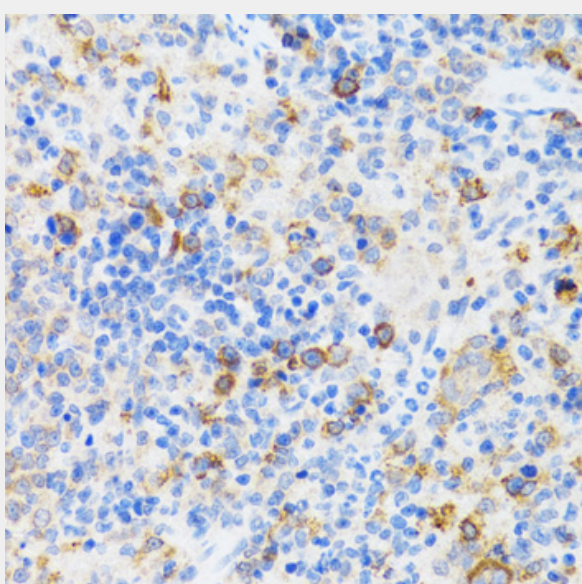
Immunohistochemistry of paraffin-embedded rat spleen using CHAF1B antibody at dilution of 1:100 (40x lens).



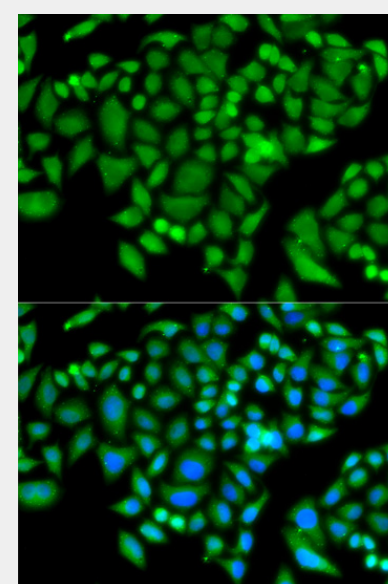
Immunohistochemistry of paraffin-embedded rat fallopian tube using CHAF1B antibody at dilution of 1:100 (40x lens).



Immunohistochemistry of paraffin-embedded human tonsil using CHAF1B antibody at dilution of 1:100 (40x lens).



Immunohistochemistry of paraffin-embedded mouse spleen using CHAF1B antibody at dilution of 1:100 (40x lens).



Immunofluorescence analysis of MCF-7 cells using CHAF1B antibody. Blue: DAPI for nuclear staining.

All products are for RESEARCH USE ONLY. Not for diagnostic & therapeutic purposes!