

Anti SF3B3 Antibody

Catalog No: tcsa19335



Available Sizes

Size: 100µl



Specifications

Application:

WB, IHC

Species Reactivity:

Human, Mouse, Rat

Host Species:

Rabbit

Immunogen / Amino acids:

Recombinant protein of human SF3B3

Conjugation:

Unconjugated

Clonality:

Polyclonal

Isotype:

IgG

Form:

Liquid

Storage Buffer:

PBS with 0.02% sodium azide, 50% glycerol, pH7.3.

Recommended Dilution:

WB 1:500 - 1:2000

IHC 1:50 - 1:200

Storage Instruction:

Store at -20C. Avoid freeze / thaw cycles.

Alternative Names:

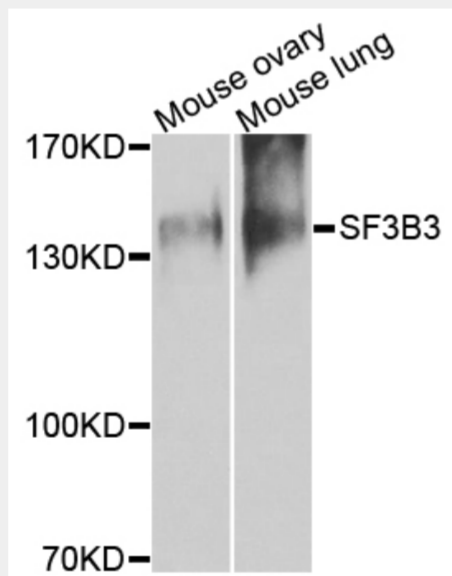
SF3B3 antibody; Splicing factor 3B subunit 3 antibody; Pre-mRNA-splicing factor SF3b 130 kDa subunit antibody; SF3b130 antibody; STAF130 antibody; Spliceosome-associated protein 130 antibody; SAP 130 antibody; SF3B3 antibody; KIAA0

SwissProt:

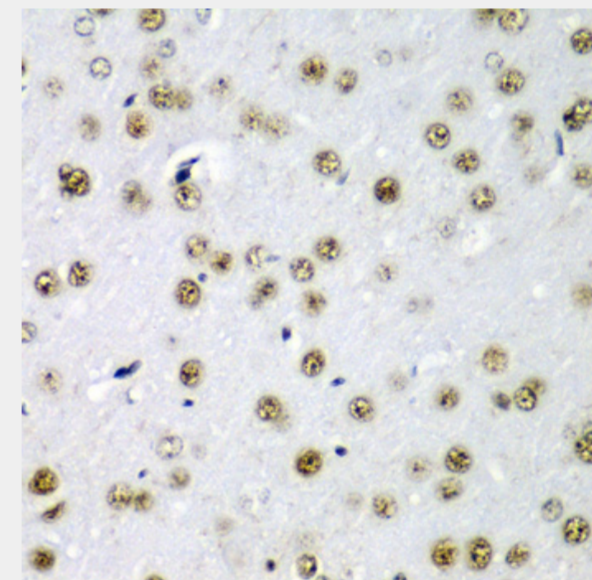
Q15393

Product Description

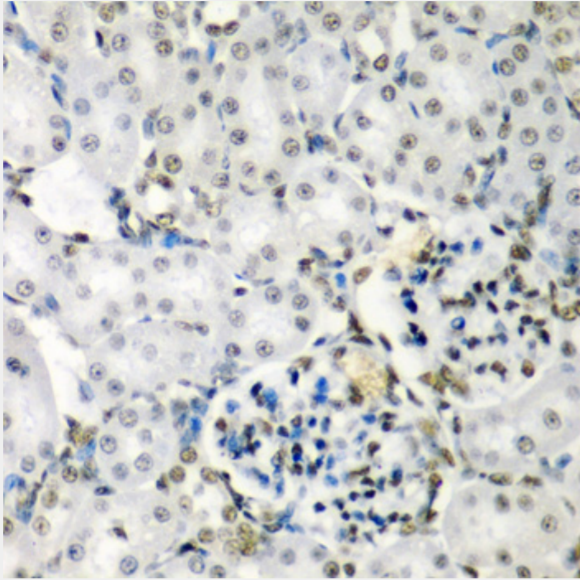
This gene encodes subunit 3 of the splicing factor 3b protein complex. Splicing factor 3b, together with splicing factor 3a and a 12S RNA unit, forms the U2 small nuclear ribonucleoproteins complex (U2 snRNP). The splicing factor 3b/3a complex binds pre-mRNA upstream of the intron's branch site in a sequence independent manner and may anchor the U2 snRNP to the pre-mRNA. Splicing factor 3b is also a component of the minor U12-type spliceosome. Subunit 3 has also been identified as a component of the STAGA (SPT3-TAF(II)31-GCN5L acetylase) transcription coactivator-HAT (histone acetyltransferase) complex, and the TFTC (TATA-binding-protein-free TAF(II)-containing complex). These complexes may function in chromatin modification, transcription, splicing, and DNA repair.



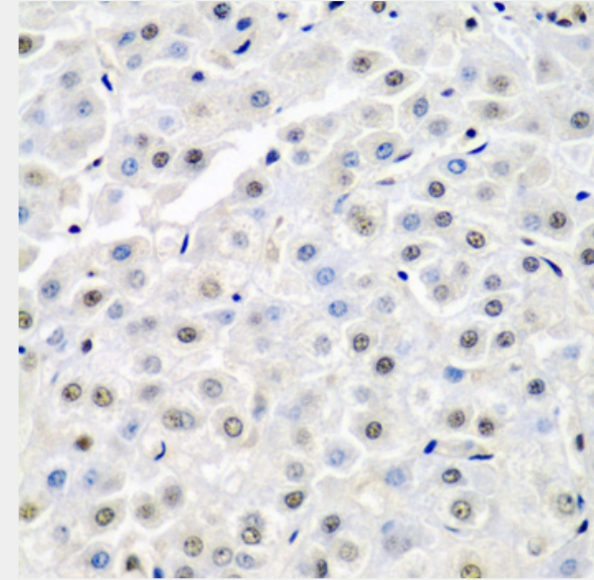
Western blot analysis of extracts of various cell lines, using SF3B3 antibody at 1:1000 dilution. Secondary antibody: HRP Goat Anti-Rabbit IgG (H+L) at 1:10000 dilution. Lysates/proteins: 25ug per lane. Blocking buffer: 3% nonfat dry milk in TBST.



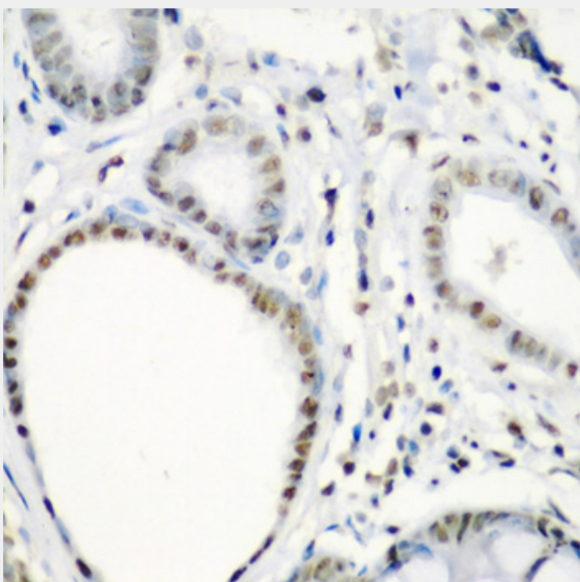
Immunohistochemistry of paraffin-embedded rat brain using SF3B3 antibody at dilution of 1:200 (40x lens).



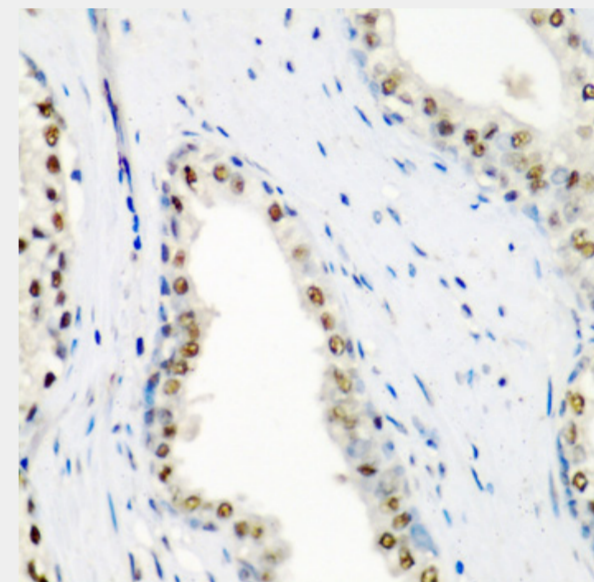
Immunohistochemistry of paraffin-embedded rat kidney using SF3B3 antibody at dilution of 1:200 (40x lens).



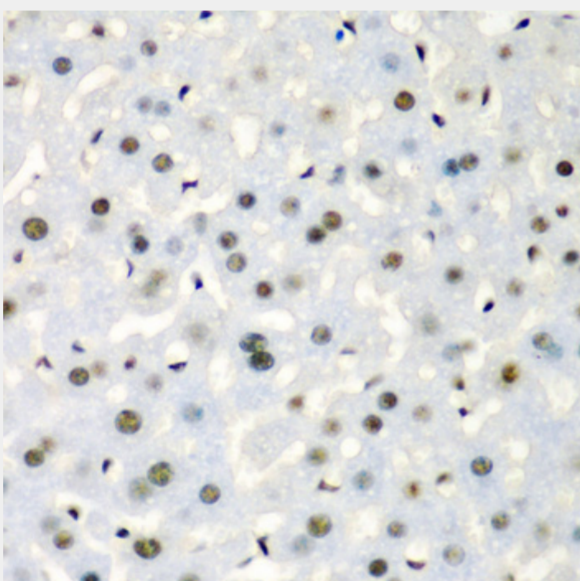
Immunohistochemistry of paraffin-embedded human liver cancer using SF3B3 antibody at dilution of 1:200 (40x lens).



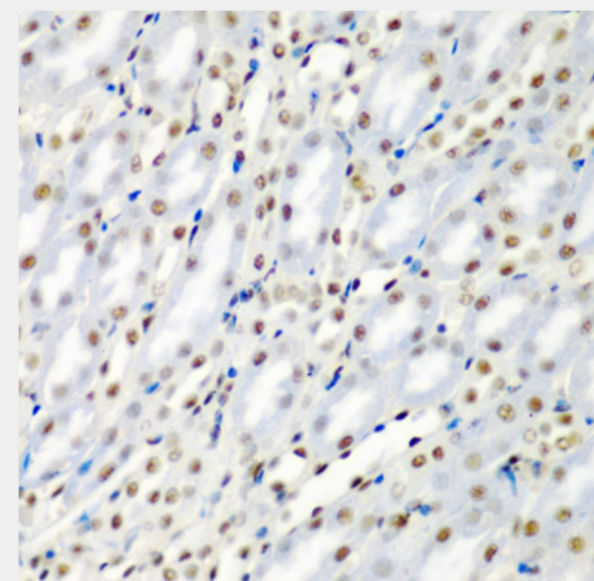
Immunohistochemistry of paraffin-embedded human colon carcinoma using SF3B3 antibody at dilution of 1:200 (40x lens).



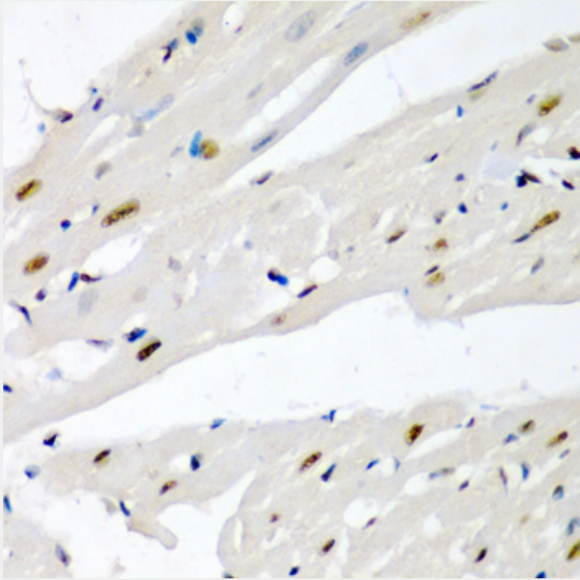
Immunohistochemistry of paraffin-embedded human prostate using SF3B3 antibody at dilution of 1:200 (40x lens).



Immunohistochemistry of paraffin-embedded mouse liver using SF3B3 antibody at dilution of 1:200 (40x lens).



Immunohistochemistry of paraffin-embedded mouse kidney using SF3B3 antibody at dilution of 1:200 (40x lens).



Immunohistochemistry of paraffin-embedded mouse heart using SF3B3 antibody at dilution of 1:200 (40x lens).

All products are for RESEARCH USE ONLY. Not for diagnostic & therapeutic purposes!