

Anti SNRNP70 Antibody

Catalog No: tcsa19304



Available Sizes

Size: 100µl



Specifications

Application:

WB, IHC

Species Reactivity:

Human, Mouse, Rat

Host Species:

Rabbit

Immunogen / Amino acids:

A synthetic peptide of human SNRNP70

Conjugation:

Unconjugated

Clonality:

Polyclonal

Isotype:

IgG

Form:

Liquid

Storage Buffer:

PBS with 0.02% sodium azide, 50% glycerol, pH7.3.

Recommended Dilution:

WB 1:500 - 1:1000

IHC 1:50 - 1:100

Storage Instruction:

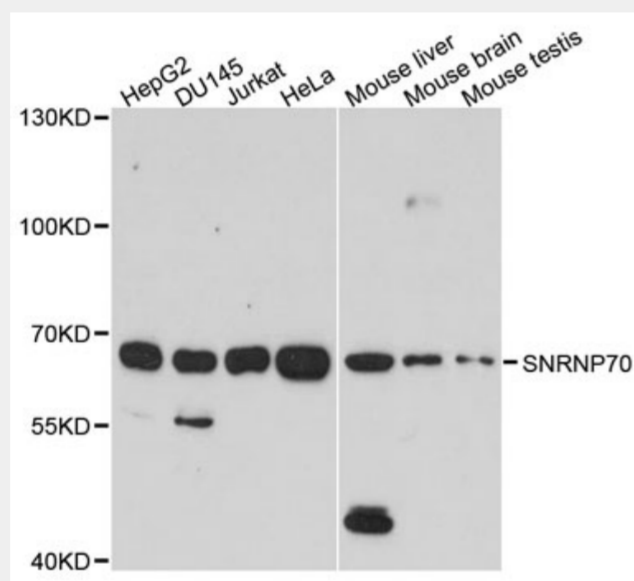
Store at -20C. Avoid freeze / thaw cycles.

Alternative Names:

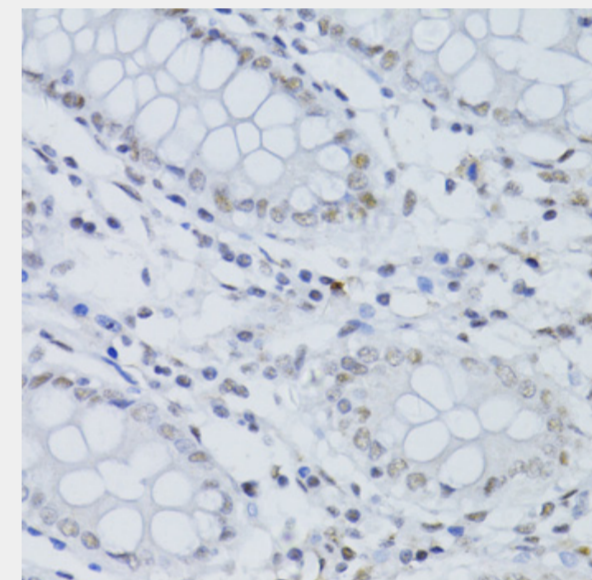
SNRNP70 antibody; U1 small nuclear ribonucleoprotein 70 kDa antibody; U1 snRNP 70 kDa antibody; U1-70K antibody; snRNP70 antibody; SNRNP70 antibody; RNPU1Z antibody; RPU1 antibody; SNRP70 antibody; U1AP1 antibody

SwissProt:

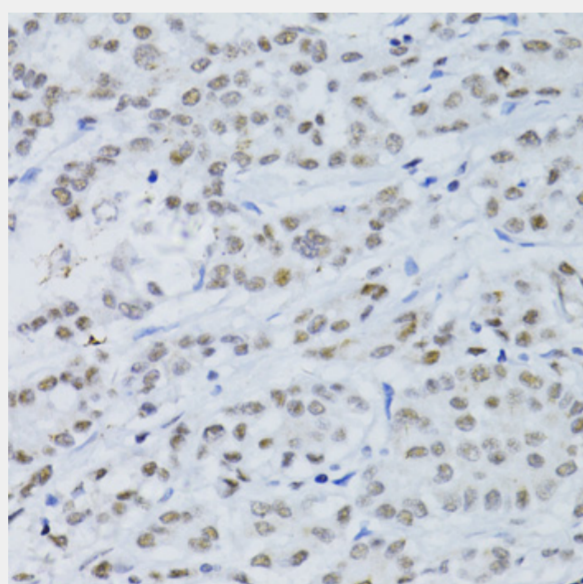
P08621



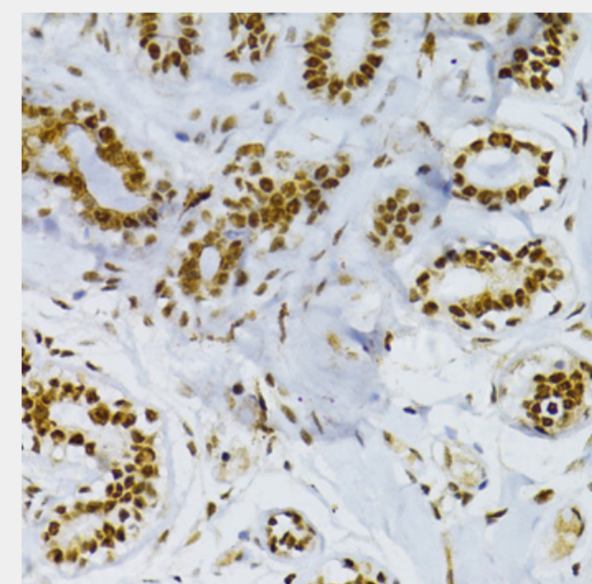
Western blot analysis of extracts of various cell lines, using SNRNP70 antibody at 1:1000 dilution. Secondary antibody: HRP Goat Anti-Rabbit IgG (H+L) at 1:10000 dilution. Lysates/proteins: 25ug per lane. Blocking buffer: 3% nonfat dry milk in TBST. Detection: ECL Enhanced Kit. Exposure time: 90s.



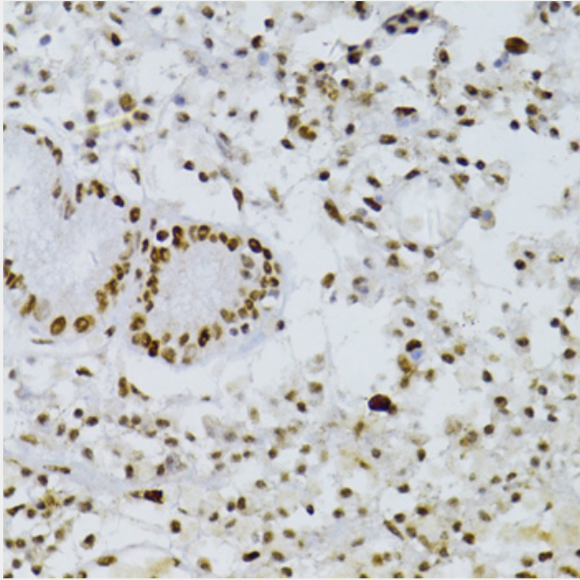
Immunohistochemistry of paraffin-embedded human colon using SNRNP70 antibody at dilution of 1:100 (40x lens).



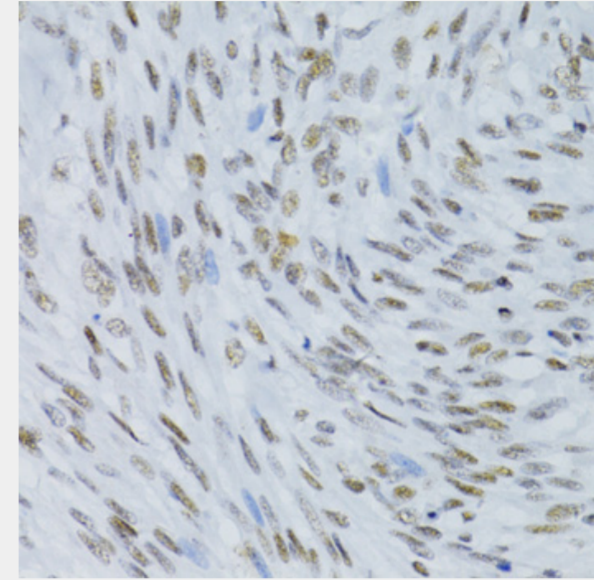
Immunohistochemistry of paraffin-embedded human colon carcinoma using SNRNP70 antibody at dilution of 1:100 (40x lens).



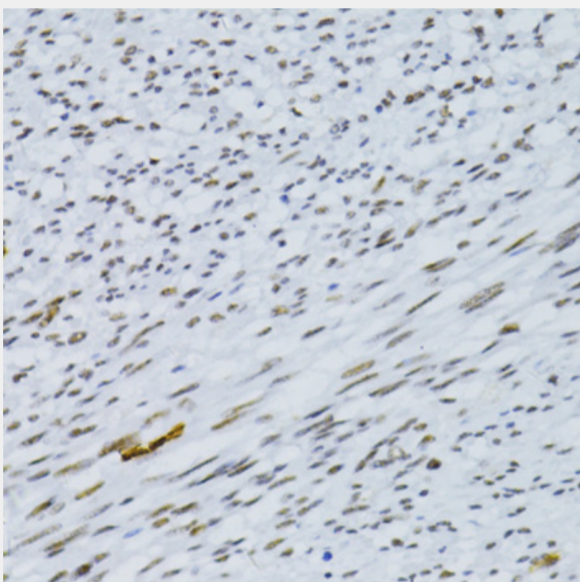
Immunohistochemistry of paraffin-embedded human breast cancer using SNRNP70 antibody at dilution of 1:100 (40x lens).



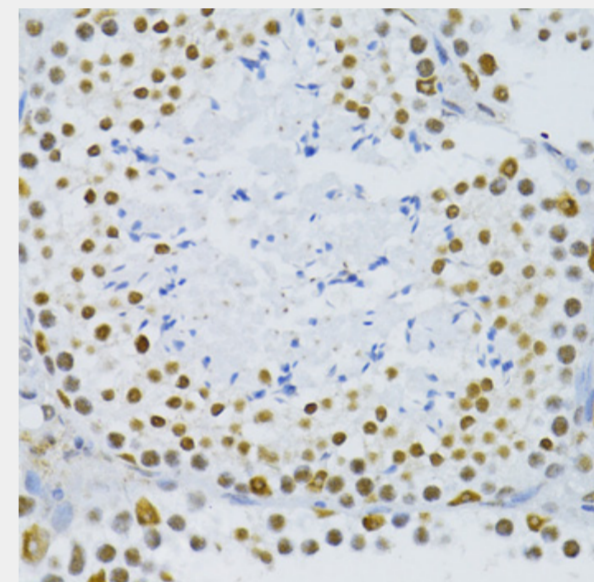
Immunohistochemistry of paraffin-embedded human stomach using SNRNP70 antibody at dilution of 1:100 (40x lens).



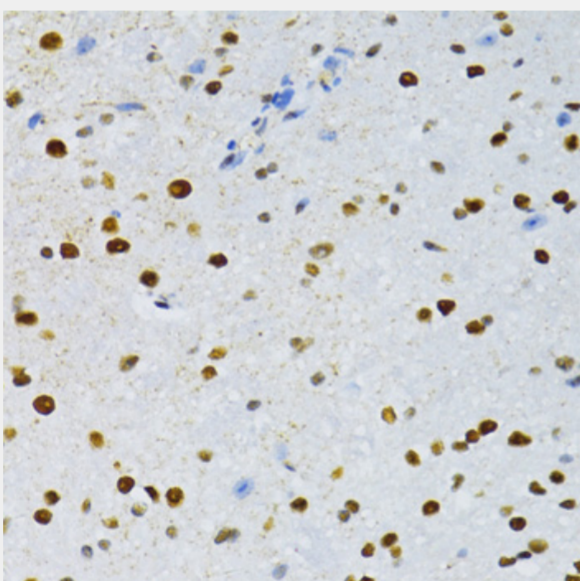
Immunohistochemistry of paraffin-embedded human uterus using SNRNP70 antibody at dilution of 1:100 (40x lens).



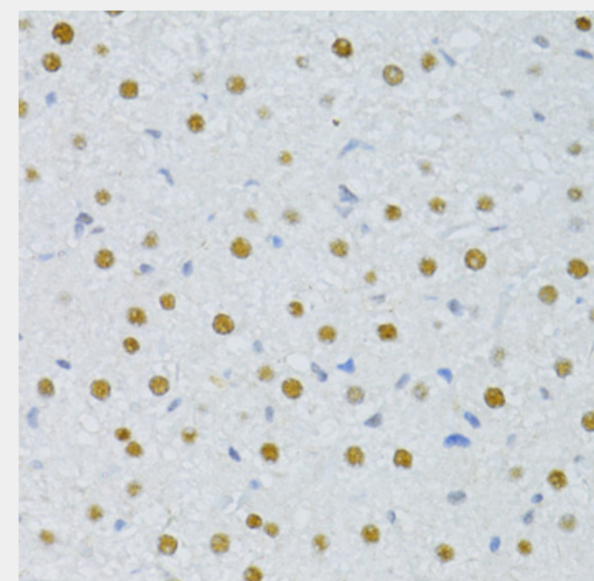
Immunohistochemistry of paraffin-embedded human uterine cancer using SNRNP70 antibody at dilution of 1:100 (40x lens).



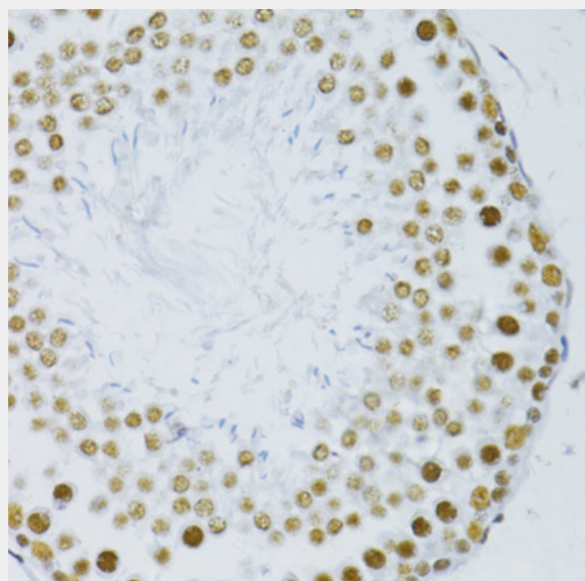
Immunohistochemistry of paraffin-embedded mouse testis using SNRNP70 antibody at dilution of 1:100 (40x lens).



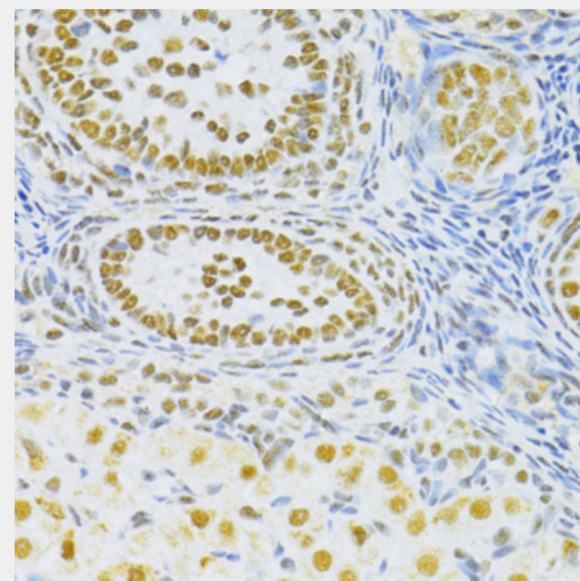
Immunohistochemistry of paraffin-embedded mouse spinal cord using SNRNP70 antibody at dilution of 1:100 (40x lens).



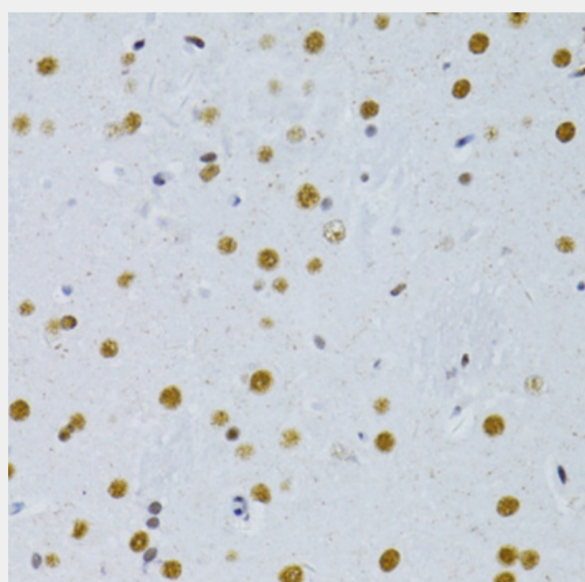
Immunohistochemistry of paraffin-embedded rat liver using SNRNP70 antibody at dilution of 1:100 (40x lens).



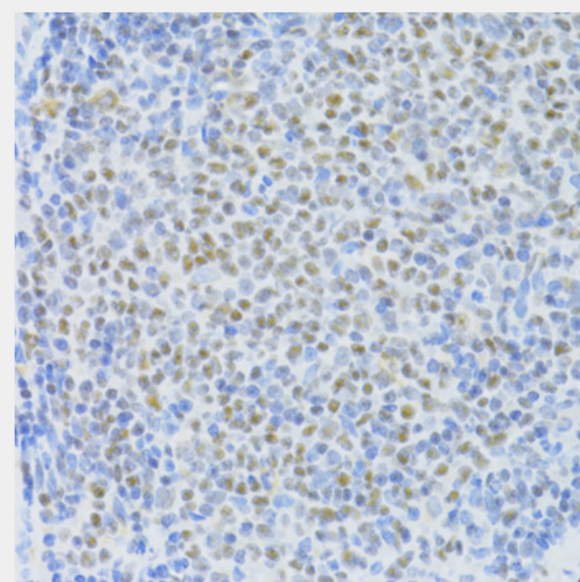
Immunohistochemistry of paraffin-embedded rat testis using SNRNP70 antibody at dilution of 1:100 (40x lens).



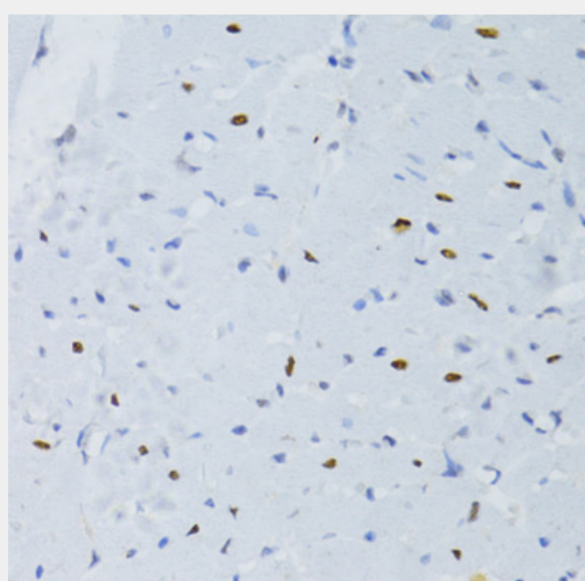
Immunohistochemistry of paraffin-embedded rat ovary using SNRNP70 antibody at dilution of 1:100 (40x lens).



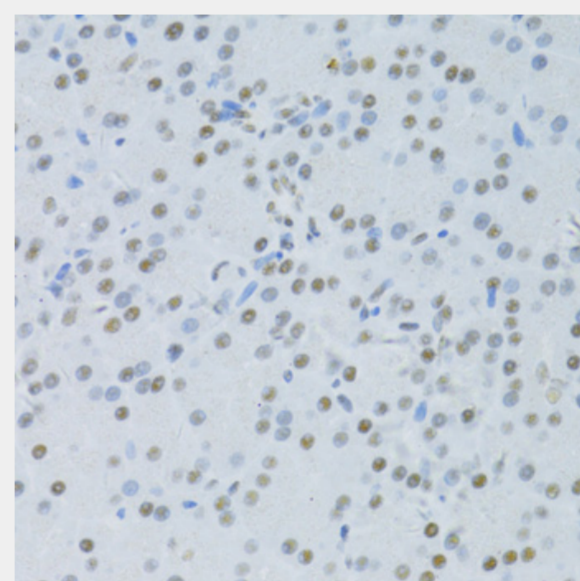
Immunohistochemistry of paraffin-embedded rat brain using SNRNP70 antibody at dilution of 1:100 (40x lens).



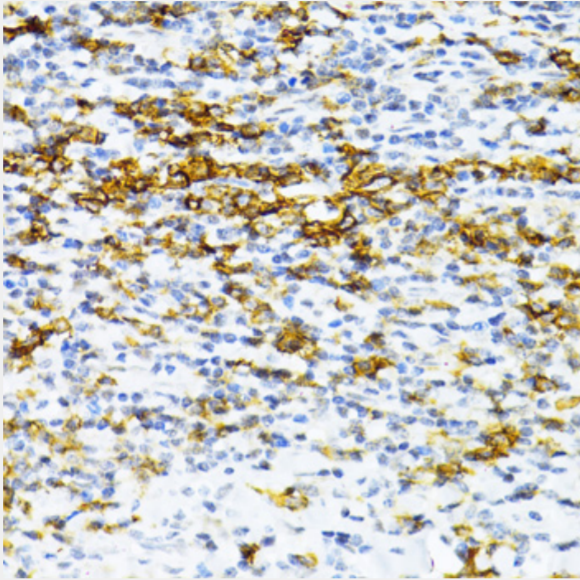
Immunohistochemistry of paraffin-embedded rat spleen using SNRNP70 antibody at dilution of 1:100 (40x lens).



Immunohistochemistry of paraffin-embedded rat heart using SNRNP70 antibody at dilution of 1:100 (40x lens).



Immunohistochemistry of paraffin-embedded rat pancreas using SNRNP70 antibody at dilution of 1:100 (40x lens).



Immunohistochemistry of paraffin-embedded human tonsil using SNRNP70 antibody at dilution of 1:100 (40x lens).

All products are for RESEARCH USE ONLY. Not for diagnostic & therapeutic purposes!