

# Anti ALYREF Antibody

Catalog No: tcsa19286



## Available Sizes

---

**Size:** 100μl



## Specifications

---

**Application:**

WB, IHC

**Species Reactivity:**

Human, Mouse, Rat

**Host Species:**

Rabbit

**Immunogen / Amino acids:**

Recombinant protein of human ALYREF

**Conjugation:**

Unconjugated

**Clonality:**

Polyclonal

**Isotype:**

IgG

**Form:**

Liquid

**Storage Buffer:**

PBS with 0.02% sodium azide, 50% glycerol, pH7.3.

**Recommended Dilution:**

WB 1:500 - 1:2000

IHC 1:50 - 1:200

### Storage Instruction:

Store at -20C. Avoid freeze / thaw cycles.

### Alternative Names:

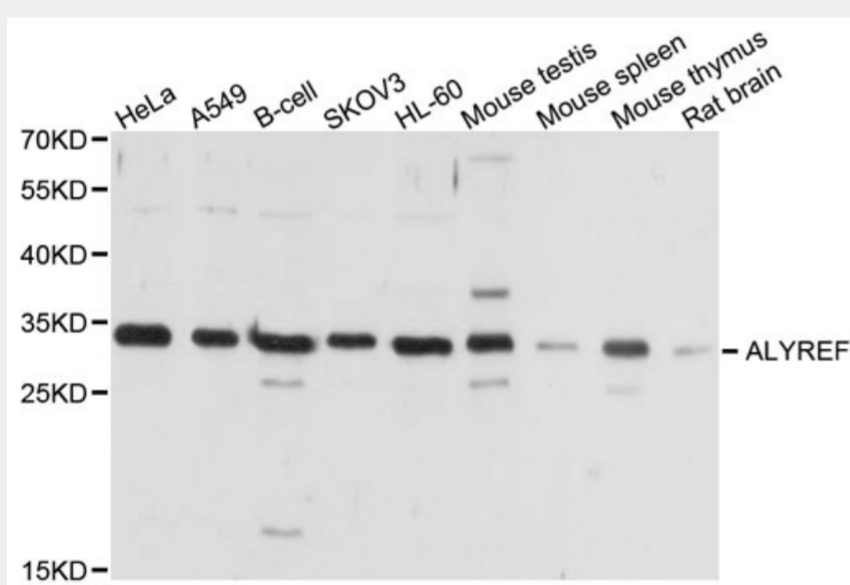
ALYREF antibody; THO complex subunit 4 antibody; Tho4 antibody; Ally of AML-1 and LEF-1 antibody; Aly/REF export factor antibody; Transcriptional coactivator Aly/REF antibody; bZIP-enhancing factor BEF antibody; ALYREF antibody; AL

### SwissProt:

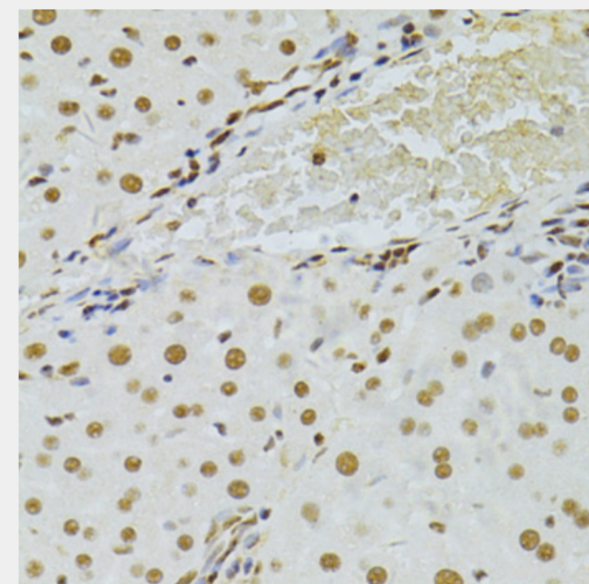
Q86V81

### Product Description

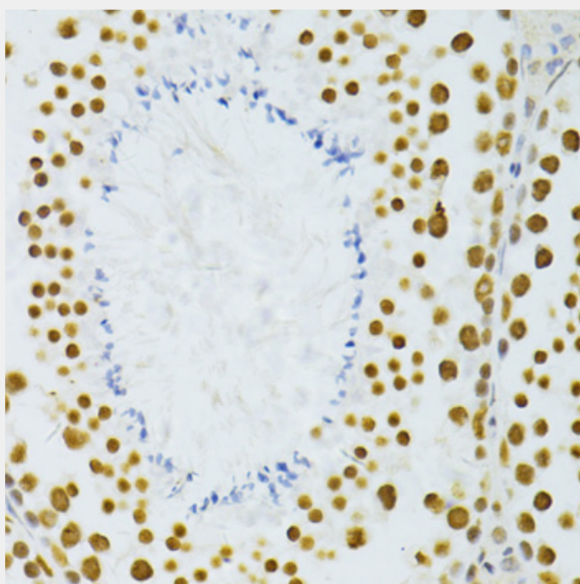
The protein encoded by this gene is a heat stable, nuclear protein and functions as a molecular chaperone. It is thought to regulate dimerization, DNA binding, and transcriptional activity of basic region-leucine zipper (bZIP) proteins.



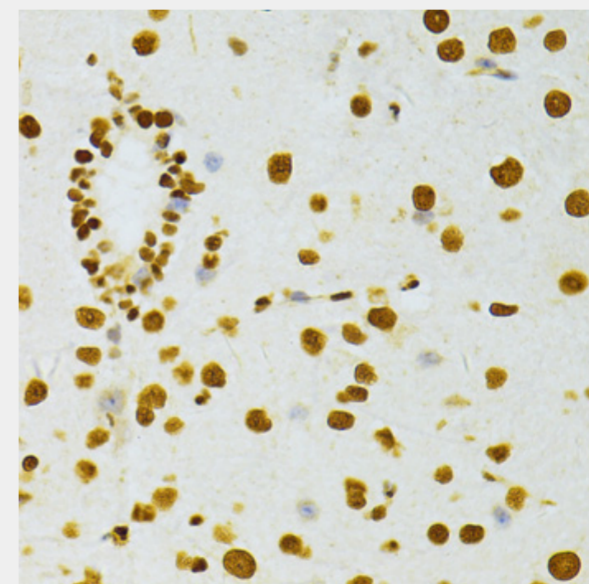
Western blot analysis of extracts of various cell lines, using ALYREF antibody at 1:1000 dilution. Secondary antibody: HRP Goat Anti-Rabbit IgG (H+L) at 1:10000 dilution. Lysates/proteins: 25ug per lane. Blocking buffer: 3% nonfat dry milk in TBST. Detection: ECL Basic Kit. Exposure time: 5s.



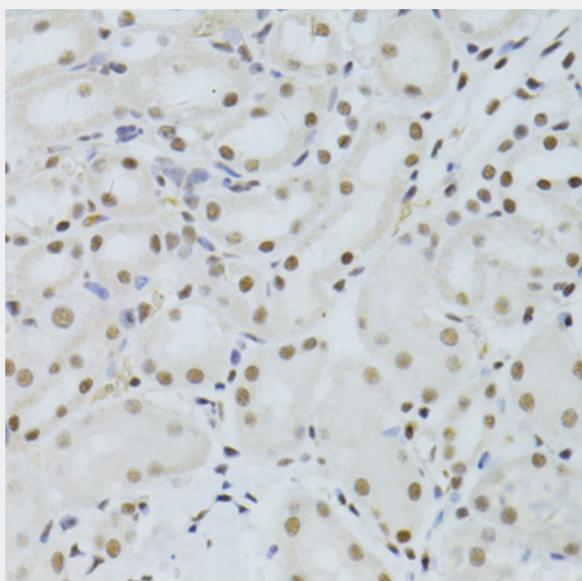
Immunohistochemistry of paraffin-embedded mouse liver using ALYREF antibody at dilution of 1:100 (40x lens).



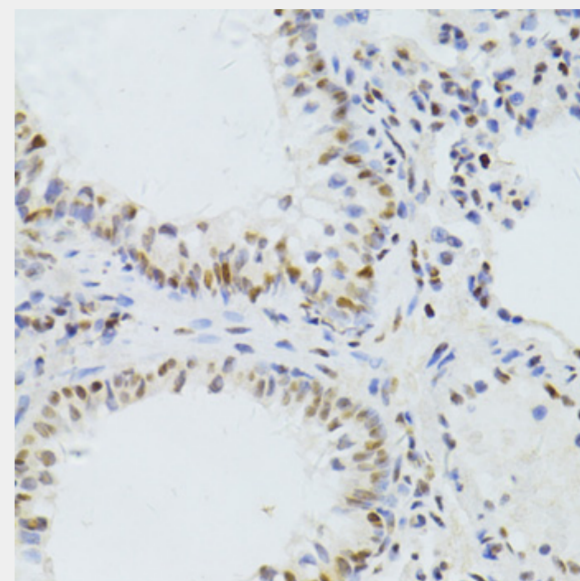
Immunohistochemistry of paraffin-embedded mouse testis using ALYREF antibody at dilution of 1:100 (40x lens).



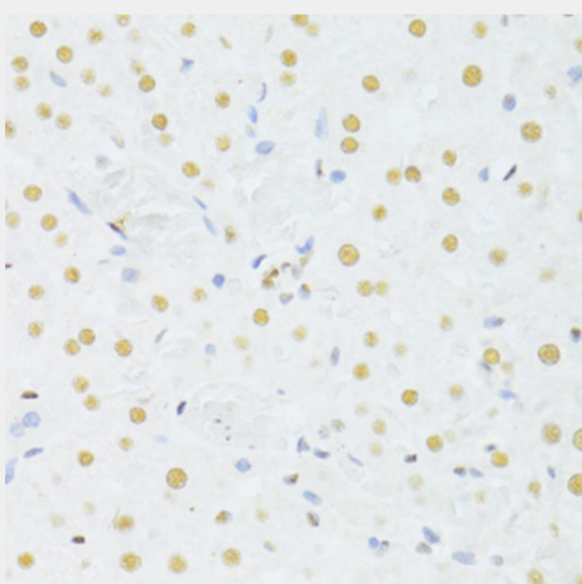
Immunohistochemistry of paraffin-embedded mouse spinal cord using ALYREF antibody at dilution of 1:100 (40x lens).



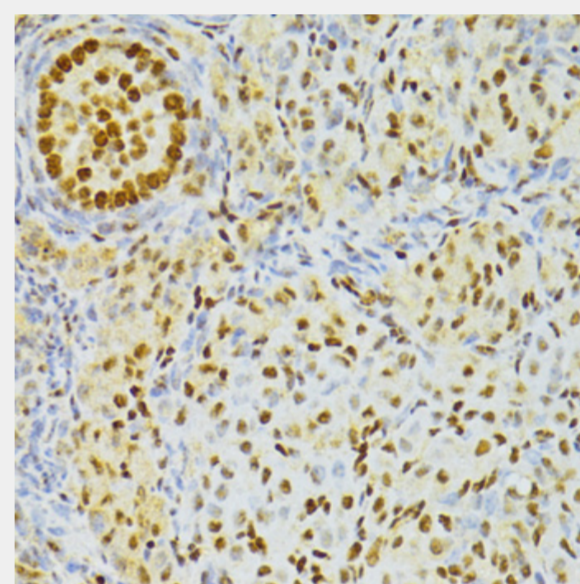
Immunohistochemistry of paraffin-embedded mouse kidney using ALYREF antibody at dilution of 1:100 (40x lens).



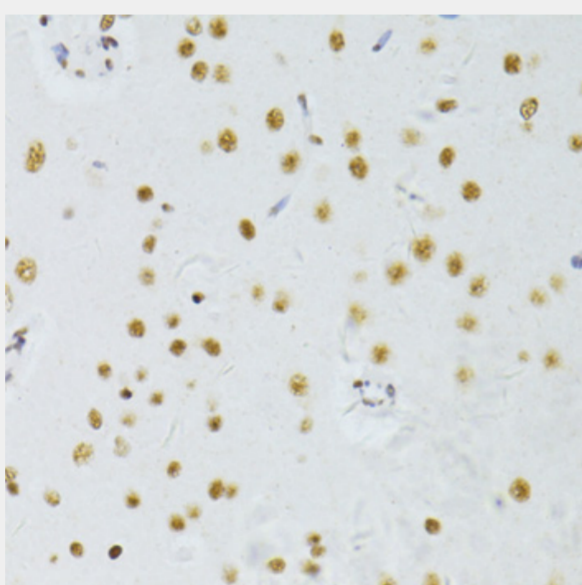
Immunohistochemistry of paraffin-embedded rat lung using ALYREF antibody at dilution of 1:100 (40x lens).



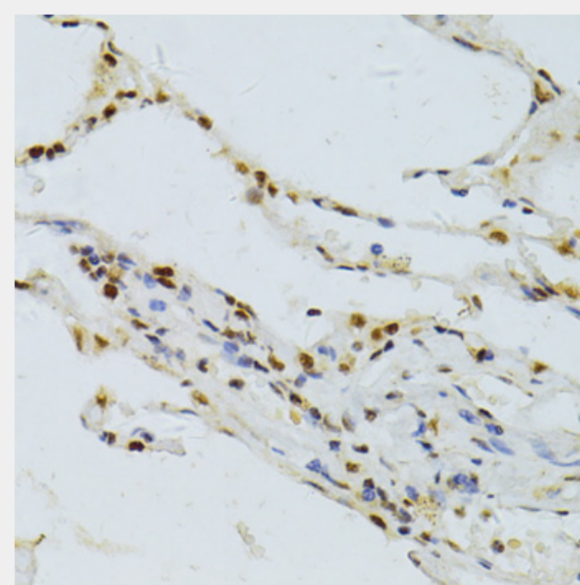
Immunohistochemistry of paraffin-embedded rat liver using ALYREF antibody at dilution of 1:100 (40x lens).



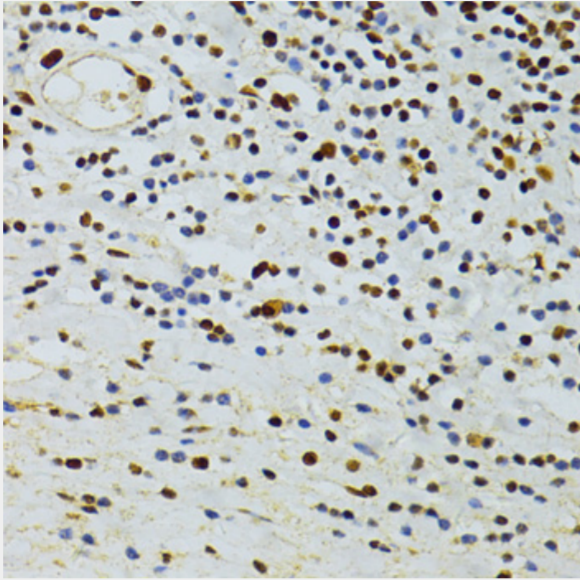
Immunohistochemistry of paraffin-embedded rat ovary using ALYREF antibody at dilution of 1:100 (40x lens).



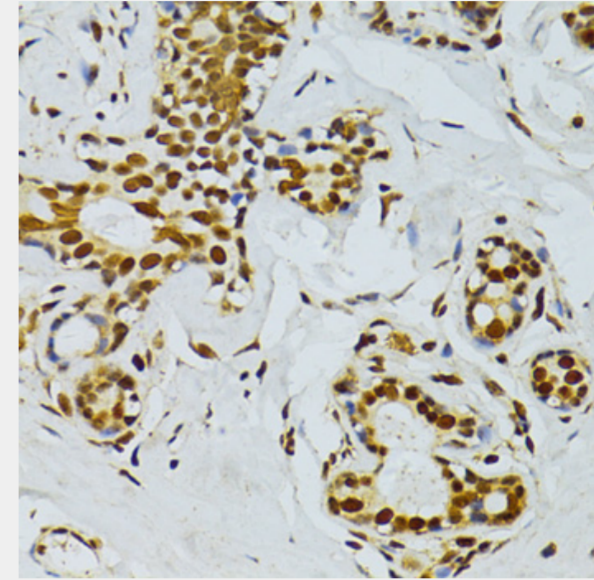
Immunohistochemistry of paraffin-embedded rat brain using ALYREF antibody at dilution of 1:100 (40x lens).



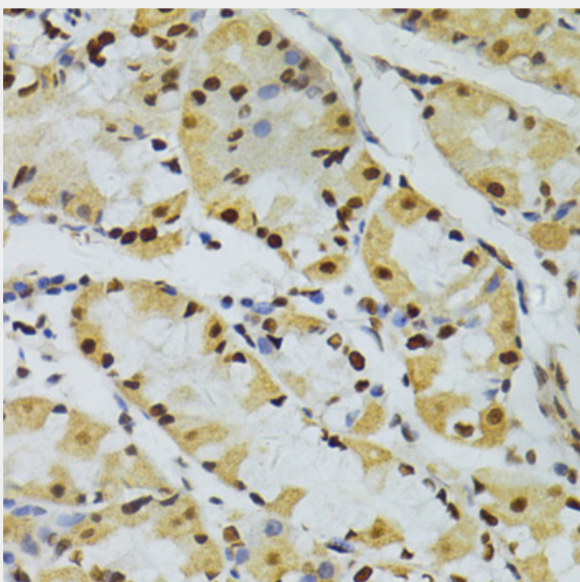
Immunohistochemistry of paraffin-embedded human lung cancer using ALYREF antibody at dilution of 1:100 (40x lens).



Immunohistochemistry of paraffin-embedded human vermiform appendix using ALYREF antibody at dilution of 1:100 (40x lens).



Immunohistochemistry of paraffin-embedded human breast using ALYREF antibody at dilution of 1:100 (40x lens).



Immunohistochemistry of paraffin-embedded human stomach using ALYREF antibody at dilution of 1:100 (40x lens).

All products are for RESEARCH USE ONLY. Not for diagnostic & therapeutic purposes!