

Anti RBPJ Antibody

Catalog No: tcsa19189



Available Sizes

Size: 100μl



Specifications

Application:

WB, IHC, IF

Species Reactivity:

Human, Mouse, Rat

Host Species:

Rabbit

Immunogen / Amino acids:

Recombinant protein of human RBPJ

Conjugation:

Unconjugated

Clonality:

Polyclonal

Isotype:

IgG

Form:

Liquid

Storage Buffer:

PBS with 0.02% sodium azide, 50% glycerol, pH7.3.

Recommended Dilution:

WB 1:500 - 1:2000

IHC 1:50 - 1:200

IF 1:20 - 1:50

Storage Instruction:

Store at -20C. Avoid freeze / thaw cycles.

Alternative Names:

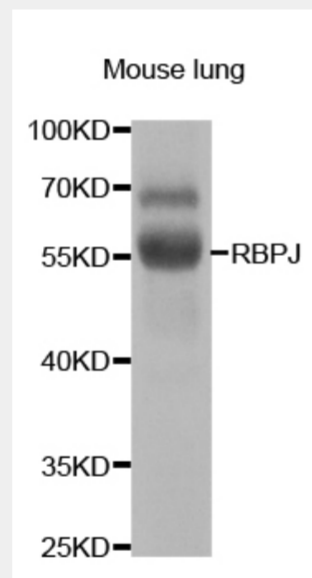
RBPJ antibody; Recombining binding protein suppressor of hairless antibody; CBF-1 antibody; J kappa-recombination signal-binding protein antibody; RBP-J kappa antibody; RBP-J antibody; RBP-JK antibody; Renal carcinoma antigen NY-REN-3

SwissProt:

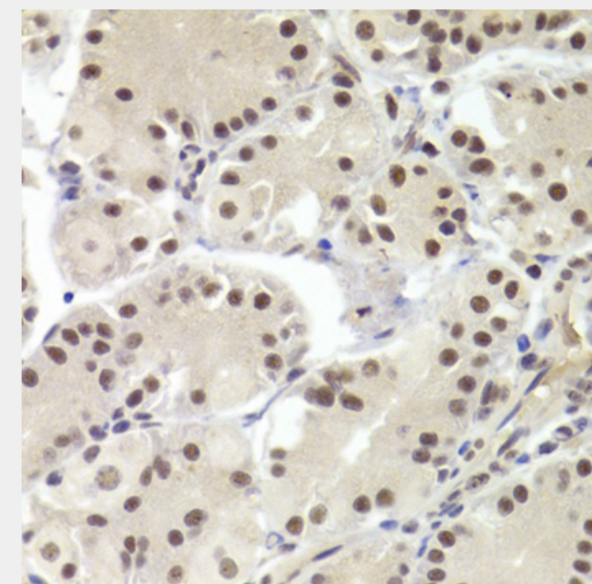
Q06330

Product Description

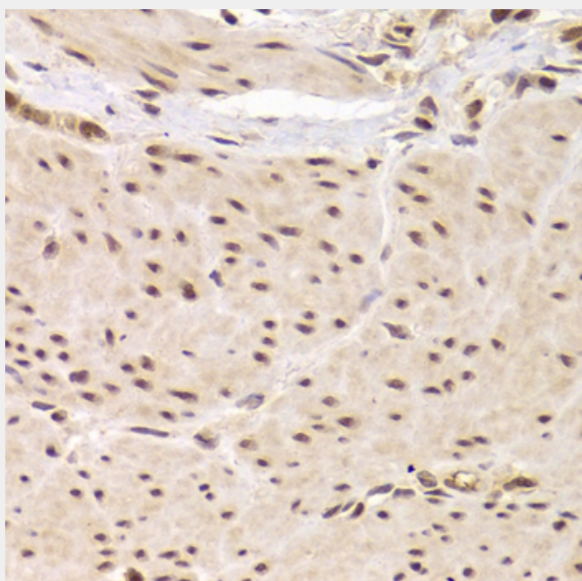
The protein encoded by this gene is a transcriptional regulator important in the Notch signaling pathway. The encoded protein acts as a repressor when not bound to Notch proteins and an activator when bound to Notch proteins. It is thought to function by recruiting chromatin remodeling complexes containing histone deacetylase or histone acetylase proteins to Notch signaling pathway genes. Several transcript variants encoding different isoforms have been found for this gene, and several pseudogenes of this gene exist on chromosome 9.



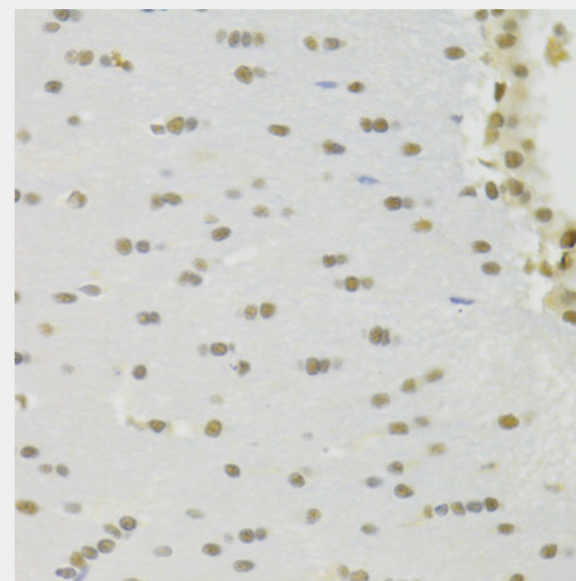
Western blot analysis of extracts of mouse lung, using RBPJ antibody at 1:1000 dilution. Secondary antibody: HRP Goat Anti-Rabbit IgG (H+L) at 1:10000 dilution. Lysates/proteins: 25ug per lane. Blocking buffer: 3% nonfat dry milk in TBST. Detection: ECL Basic Kit. Exposure time: 90s.



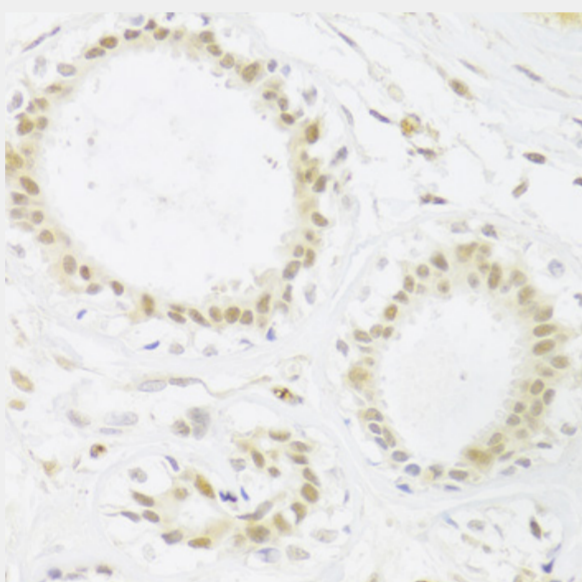
Immunohistochemistry of paraffin-embedded human stomach using RBPJ Antibody at dilution of 1:100 (40x lens).



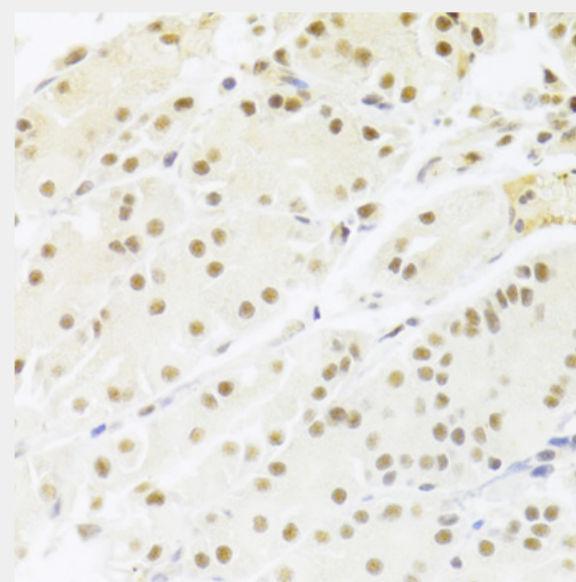
Immunohistochemistry of paraffin-embedded human gastric cancer using RBPJ Antibody at dilution of 1:100 (40x lens).



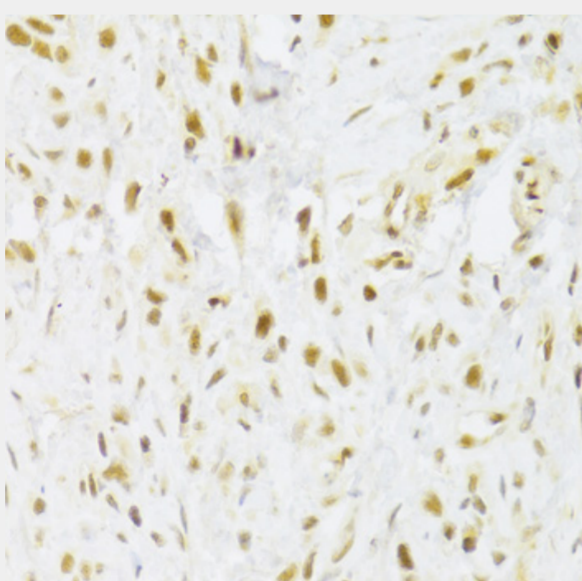
Immunohistochemistry of paraffin-embedded rat brain using RBPJ Antibody at dilution of 1:100 (40x lens).



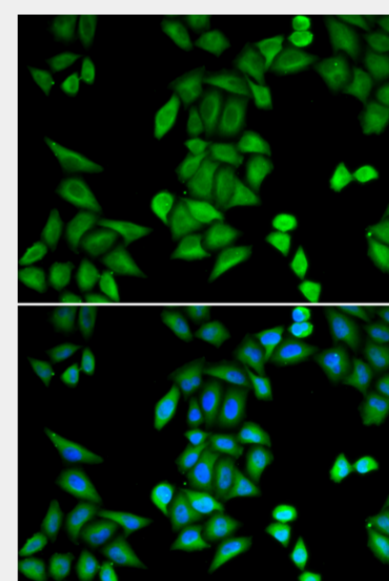
Immunohistochemistry of paraffin-embedded human breast using RBPJ Antibody at dilution of 1:100 (40x lens).



Immunohistochemistry of paraffin-embedded human stomach using RBPJ Antibody at dilution of 1:100 (40x lens).



Immunohistochemistry of paraffin-embedded human gastric cancer using RBPJ Antibody at dilution of 1:100 (40x lens).



Immunofluorescence analysis of MCF-7 cells using RBPJ antibody. Blue: DAPI for nuclear staining.

All products are for RESEARCH USE ONLY. Not for diagnostic & therapeutic purposes!