

Anti PGRMC1 Antibody

Catalog No: tcsa19138



Available Sizes

Size: 100μl



Specifications

Application:

WB, IHC

Species Reactivity:

Human, Mouse, Rat

Host Species:

Rabbit

Immunogen / Amino acids:

Recombinant protein of human PGRMC1

Conjugation:

Unconjugated

Clonality:

Polyclonal

Isotype:

IgG

Form:

Liquid

Storage Buffer:

PBS with 0.02% sodium azide, 50% glycerol, pH7.3.

Recommended Dilution:

WB 1:500 - 1:2000

IHC 1:50 - 1:200

Storage Instruction:

Store at -20C. Avoid freeze / thaw cycles.

Alternative Names:

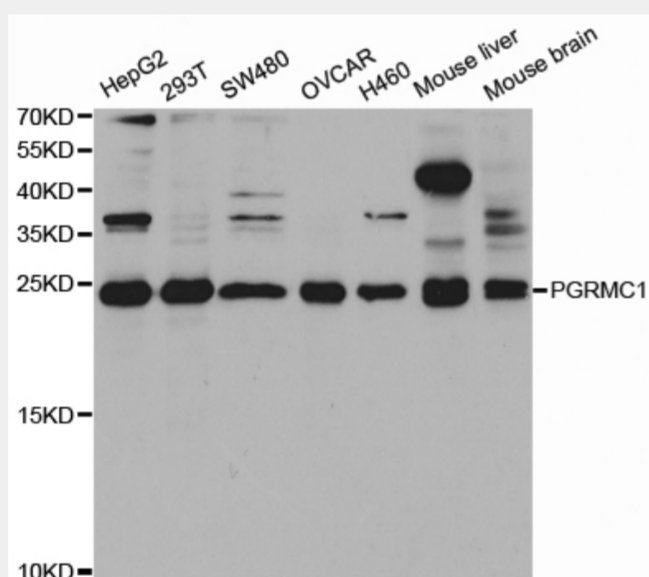
PGRMC1 antibody; Membrane-associated progesterone receptor component 1 antibody; mPR antibody; Dap1 antibody; IZA antibody; PGRMC1 antibody; HPR6.6 antibody; PGRMC antibody

SwissProt:

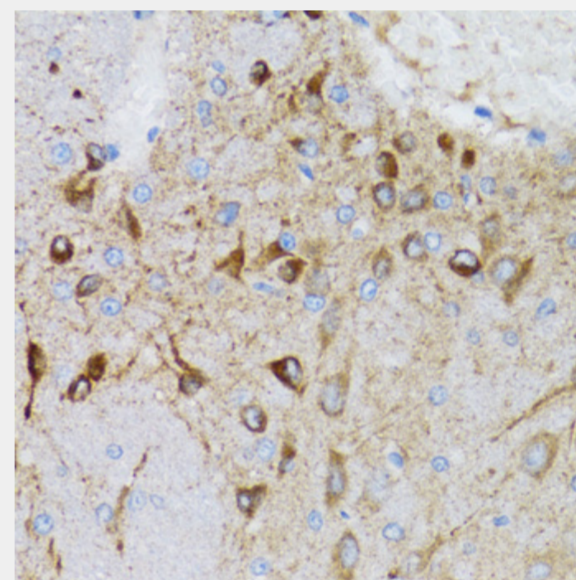
O00264

Product Description

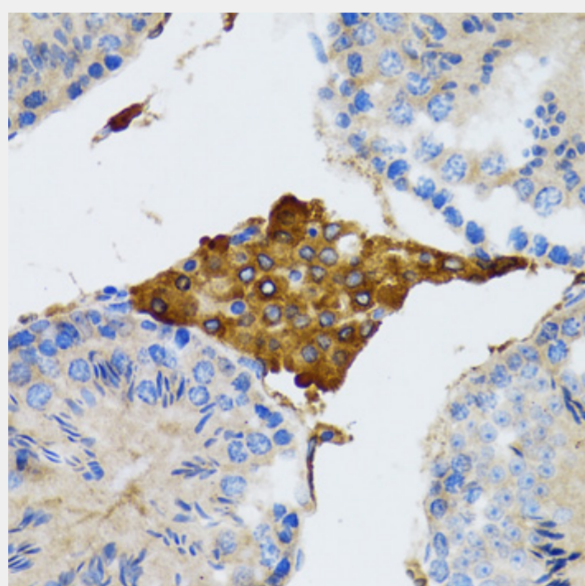
This gene encodes a putative membrane-associated progesterone steroid receptor. The protein is expressed predominantly in the liver and kidney.



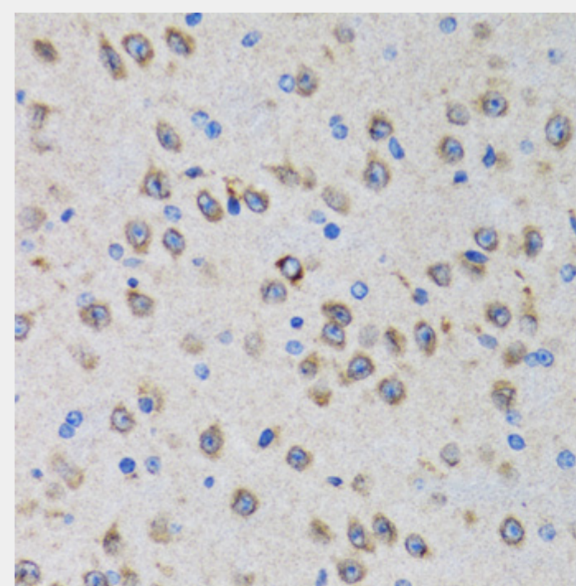
Western blot analysis of extracts of various cell lines, using PGRMC1 antibody at 1:1000 dilution. Secondary antibody: HRP Goat Anti-Rabbit IgG (H+L) at 1:10000 dilution. Lysates/proteins: 25ug per lane. Blocking buffer: 3% nonfat dry milk in TBST. Detection: ECL Basic Kit. Exposure time: 90s.



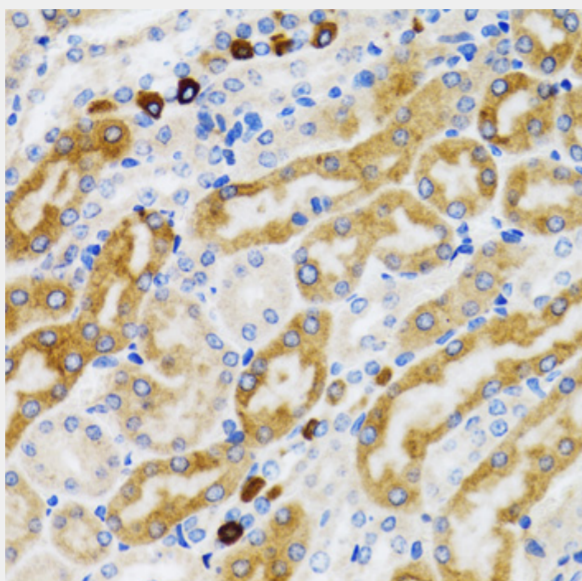
Immunohistochemistry of paraffin-embedded mouse brain using PGRMC1 antibody at dilution of 1:100 (40x lens).



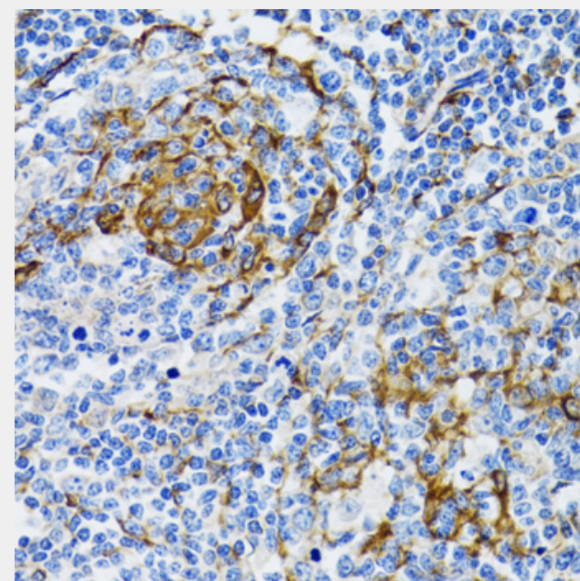
Immunohistochemistry of paraffin-embedded rat testis using PGRMC1 antibody at dilution of 1:100 (40x lens).



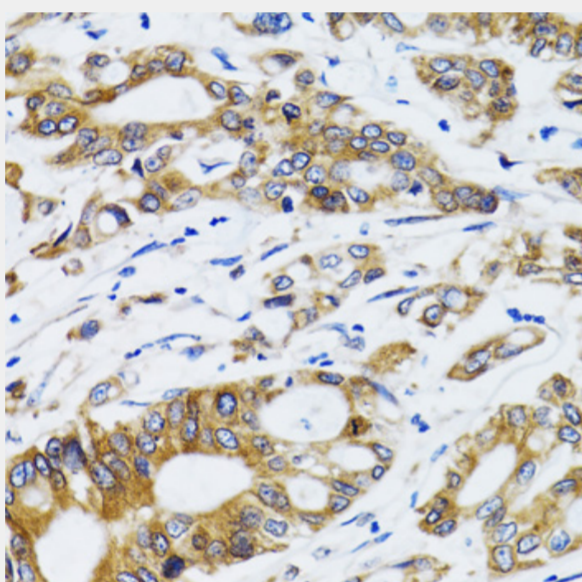
Immunohistochemistry of paraffin-embedded rat brain using PGRMC1 antibody at dilution of 1:100 (40x lens).



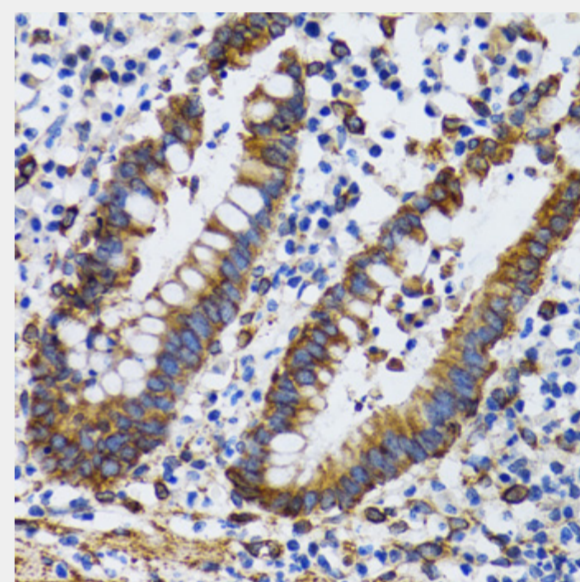
Immunohistochemistry of paraffin-embedded rat kidney using PGRMC1 antibody at dilution of 1:100 (40x lens).



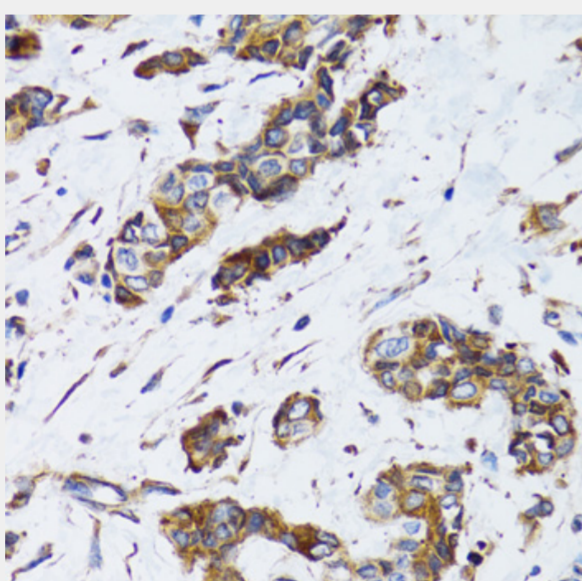
Immunohistochemistry of paraffin-embedded human tonsil using PGRMC1 antibody at dilution of 1:100 (40x lens).



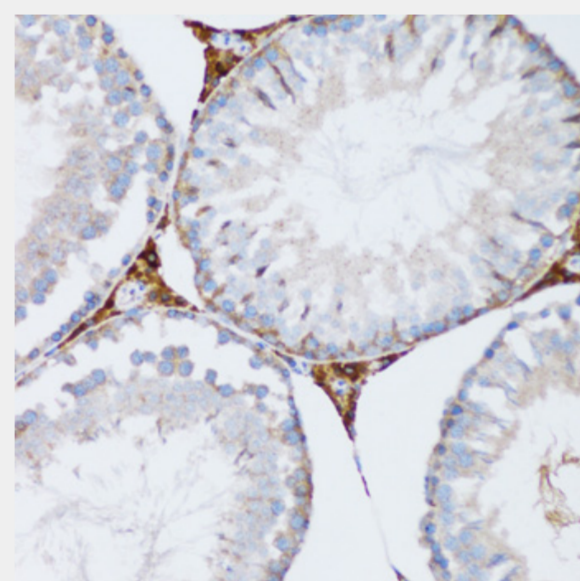
Immunohistochemistry of paraffin-embedded human colon carcinoma using PGRMC1 antibody at dilution of 1:100 (40x lens).



Immunohistochemistry of paraffin-embedded human vermiform appendix using PGRMC1 antibody at dilution of 1:100 (40x lens).



Immunohistochemistry of paraffin-embedded human breast cancer using PGRMC1 antibody at dilution of 1:100 (40x lens).



Immunohistochemistry of paraffin-embedded mouse testis using PGRMC1 antibody at dilution of 1:100 (20x lens).

All products are for RESEARCH USE ONLY. Not for diagnostic & therapeutic purposes!