

Anti RNF2 Antibody

Catalog No: tcsa19094



Available Sizes

Size: 100µl



Specifications

Application:

WB, IHC, IP, ChIP

Species Reactivity:

Human, Mouse, Rat

Host Species:

Rabbit

Immunogen / Amino acids:

Recombinant protein of human RNF2

Conjugation:

Unconjugated

Clonality:

Polyclonal

Isotype:

IgG

Form:

Liquid

Storage Buffer:

PBS with 0.02% sodium azide, 50% glycerol, pH7.3.

Recommended Dilution:

WB 1:500 - 1:2000

IHC 1:50 - 1:200

IP 1:50 - 1:200

ChIP 1:50 - 1:200

Storage Instruction:

Store at -20C. Avoid freeze / thaw cycles.

Alternative Names:

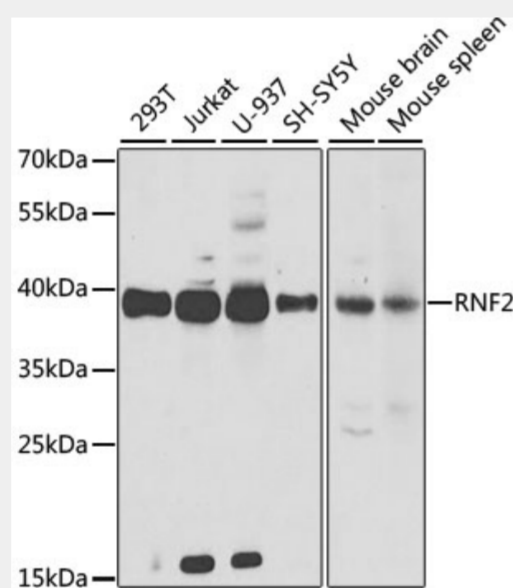
RNF2 antibody; E3 ubiquitin-protein ligase RING2 antibody; RNF2 antibody; BAP1 antibody; DING antibody; HIP13 antibody; RING1B antibody

SwissProt:

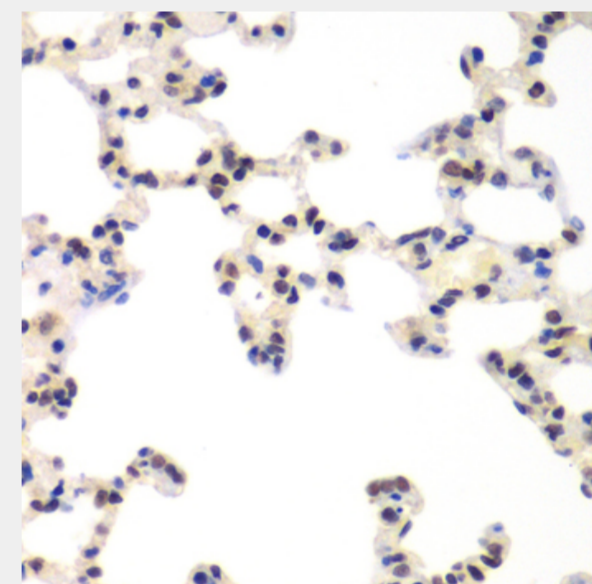
Q99496

Product Description

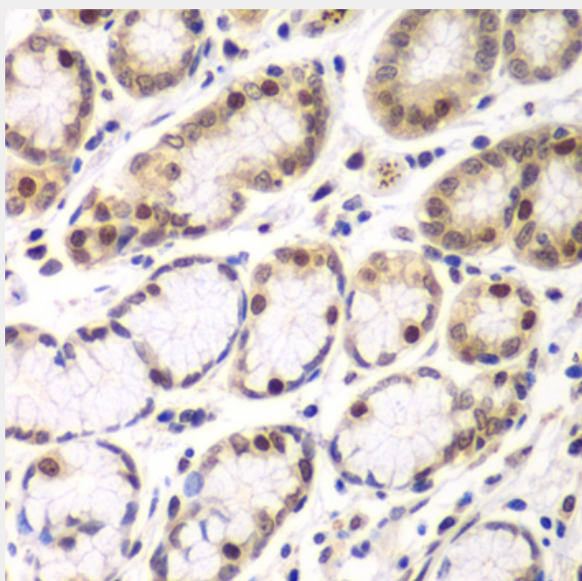
Polycomb group (PcG) of proteins form the multiprotein complexes that are important for the transcription repression of various genes involved in development and cell proliferation. The protein encoded by this gene is one of the PcG proteins. It has been shown to interact with, and suppress the activity of, transcription factor CP2 (TFCP2/CP2). Studies of the mouse counterpart suggested the involvement of this gene in the specification of anterior-posterior axis, as well as in cell proliferation in early development. This protein was also found to interact with huntingtin interacting protein 2 (HIP2), an ubiquitin-conjugating enzyme, and possess ubiquitin ligase activity.



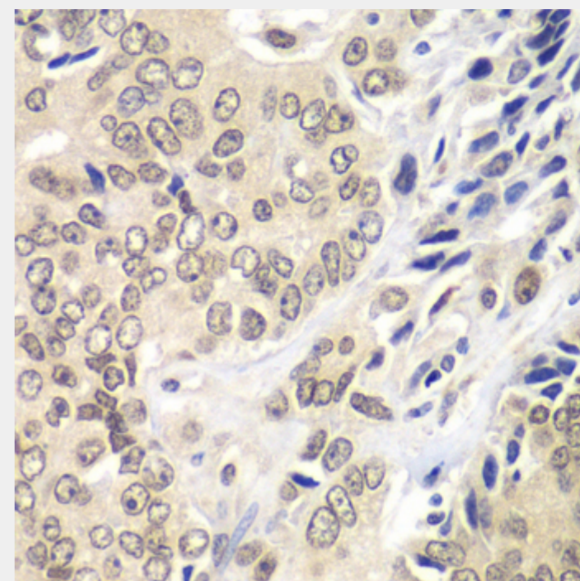
Western blot analysis of extracts of various cell lines, using RNF2 antibody at 1:1000 dilution. Secondary antibody: HRP Goat Anti-Rabbit IgG (H+L) at 1:10000 dilution. Lysates/proteins: 25ug per lane. Blocking buffer: 3% nonfat dry milk in TBST. Detection: ECL Basic Kit. Exposure time: 90s.



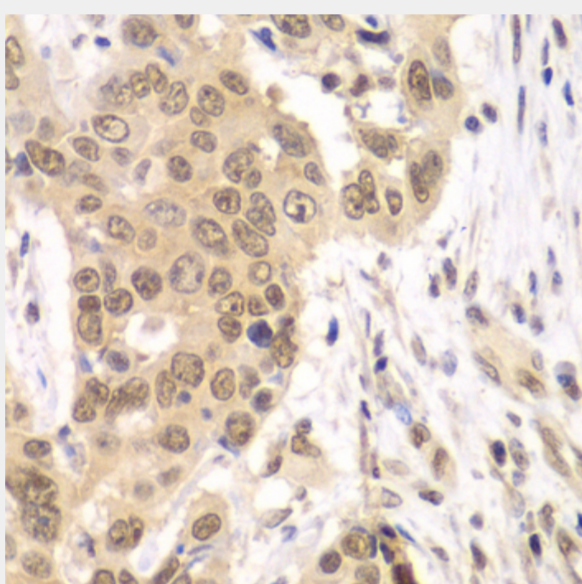
Immunohistochemistry of paraffin-embedded rat lung using RNF2 antibody at dilution of 1:100 (40x lens).



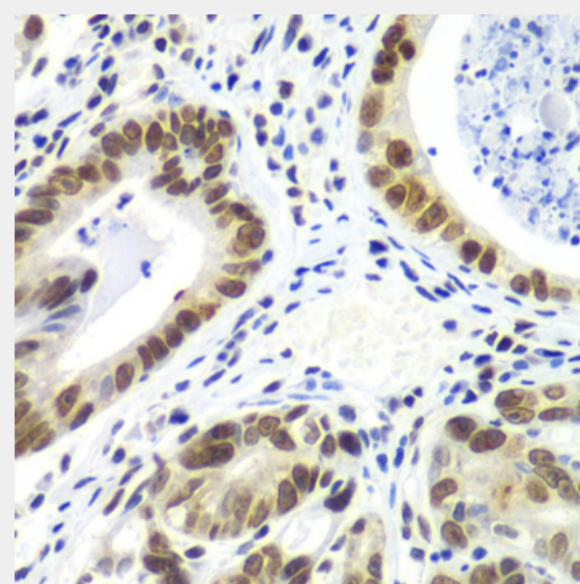
Immunohistochemistry of paraffin-embedded human colon using RNF2 antibody at dilution of 1:100 (40x lens).



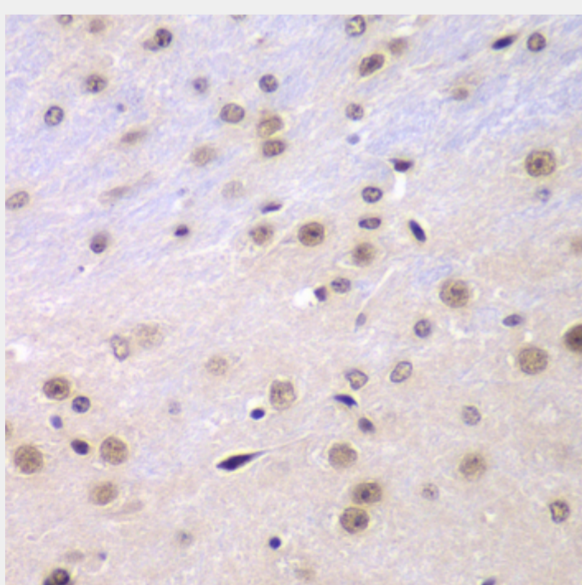
Immunohistochemistry of paraffin-embedded human prostate cancer using RNF2 antibody at dilution of 1:100 (40x lens).



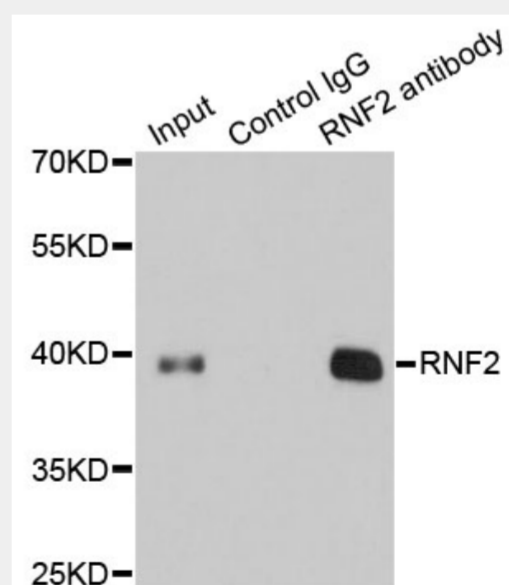
Immunohistochemistry of paraffin-embedded human esophageal cancer using RNF2 antibody at dilution of 1:100 (40x lens).



Immunohistochemistry of paraffin-embedded human gastric cancer using RNF2 antibody at dilution of 1:100 (40x lens).



Immunohistochemistry of paraffin-embedded mouse brain using RNF2 antibody at dilution of 1:100 (40x lens).



Immunoprecipitation analysis of 200ug extracts of 293T cells using 1ug RNF2 antibody. Western blot was performed from the immunoprecipitate using RNF2 antibody at a dilution of 1:1000.

All products are for RESEARCH USE ONLY. Not for diagnostic & therapeutic purposes!