

# Anti SNRPE Antibody

Catalog No: tcsa19041



## Available Sizes

---

**Size:** 100μl



## Specifications

---

**Application:**

WB, IHC, IF

**Species Reactivity:**

Human, Mouse

**Host Species:**

Rabbit

**Immunogen / Amino acids:**

Recombinant protein of human SNRPE

**Conjugation:**

Unconjugated

**Clonality:**

Polyclonal

**Isotype:**

IgG

**Form:**

Liquid

**Storage Buffer:**

PBS with 0.02% sodium azide, 50% glycerol, pH7.3.

**Recommended Dilution:**

WB 1:500 - 1:2000

IHC 1:50 - 1:200

IF 1:50 - 1:200

### Storage Instruction:

Store at -20C. Avoid freeze / thaw cycles.

### Alternative Names:

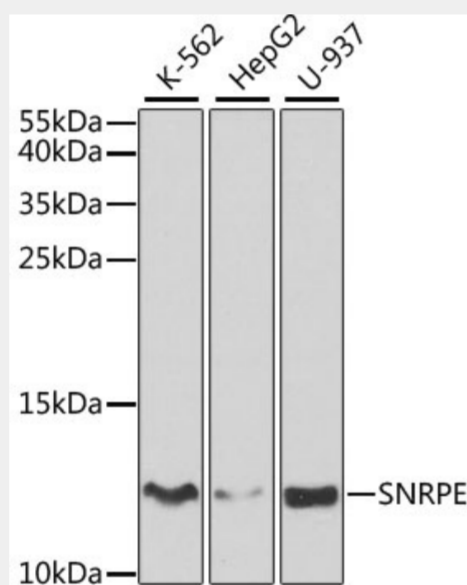
SNRPE antibody; Small nuclear ribonucleoprotein E antibody; snRNP-E antibody; Sm protein E antibody; Sm-E antibody; SmE antibody; SNRPE antibody

### SwissProt:

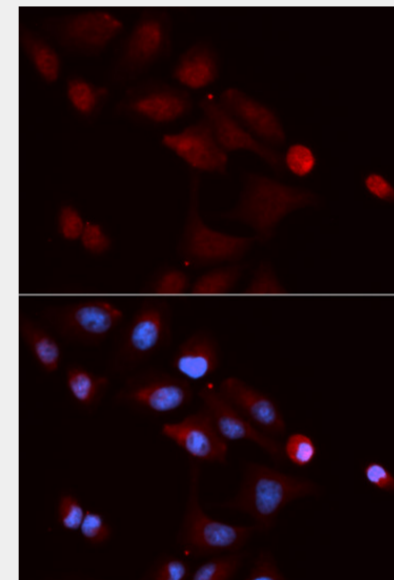
P62304

## Product Description

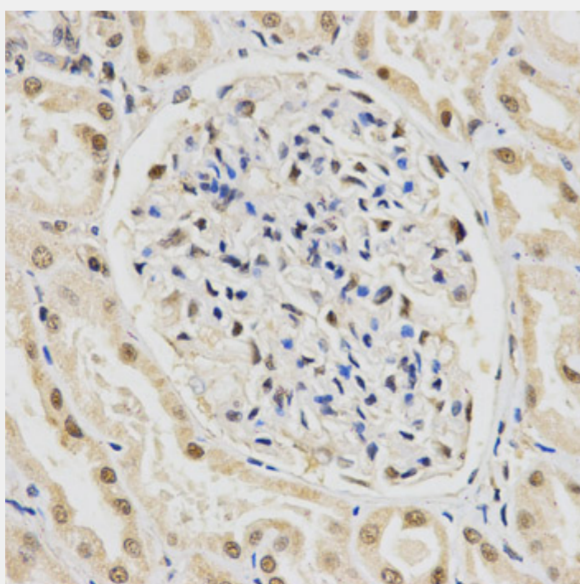
The protein encoded by this gene is a core component of U small nuclear ribonucleoproteins, which are key components of the pre-mRNA processing spliceosome. The encoded protein plays a role in the 3' end processing of histone transcripts. This protein is one of the targets in the autoimmune disease systemic lupus erythematosus, and mutations in this gene have been associated with hypotrichosis. Several pseudogenes of this gene have been identified.



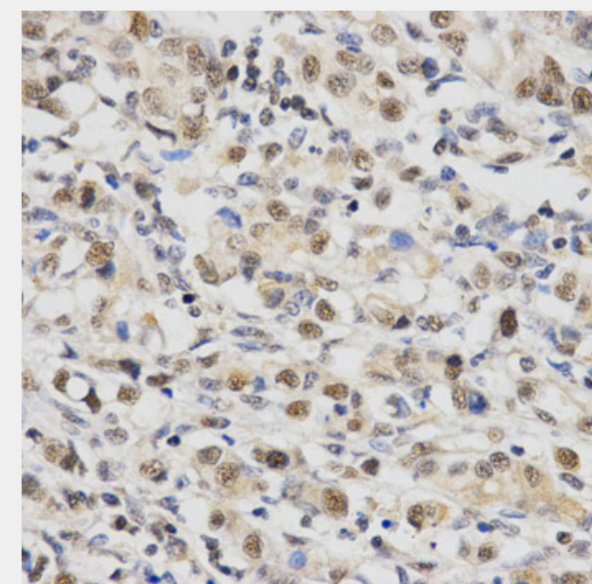
Western blot analysis of extracts of various cell lines, using SNRPE antibody at 1:1000 dilution. Secondary antibody: HRP Goat Anti-Rabbit IgG (H+L) at 1:10000 dilution. Lysates/proteins: 25ug per lane. Blocking buffer: 3% nonfat dry milk in TBST. Detection: ECL Basic Kit. Exposure time: 60s.



Immunofluorescence analysis of U2OS cells using SNRPE antibody. Blue: DAPI for nuclear staining.

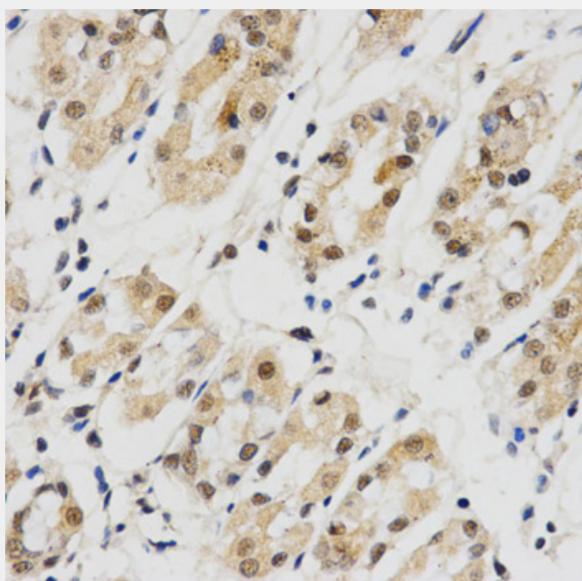


Immunohistochemistry of paraffin-embedded human kidney using SNRPE Antibody at dilution of 1:200 (40x lens).

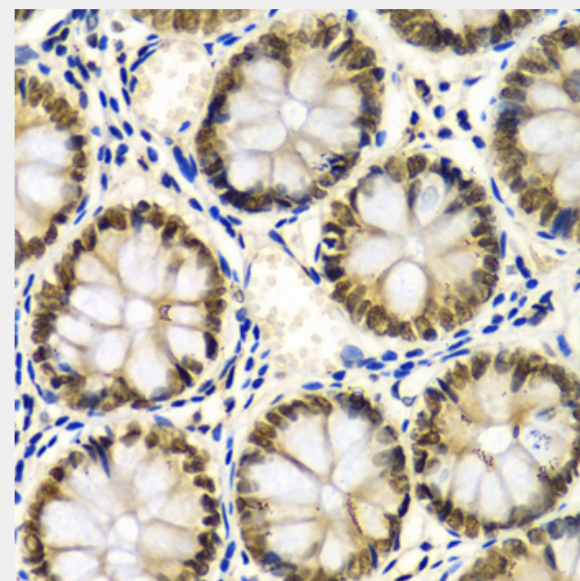


Immunohistochemistry of paraffin-embedded human gastric cancer using SNRPE Antibody at dilution of 1:200 (40x lens).

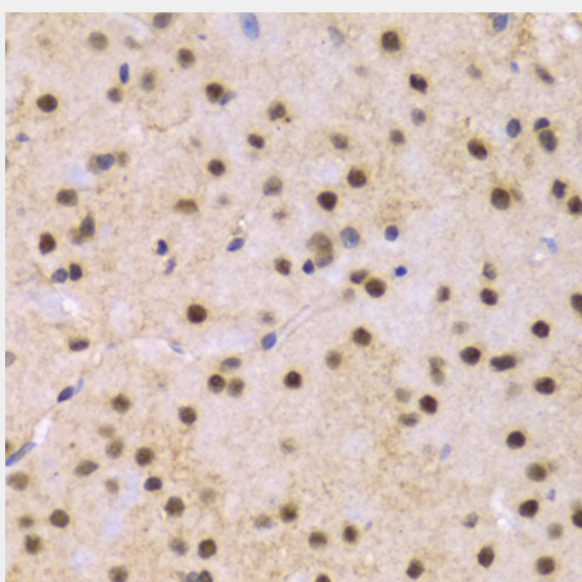




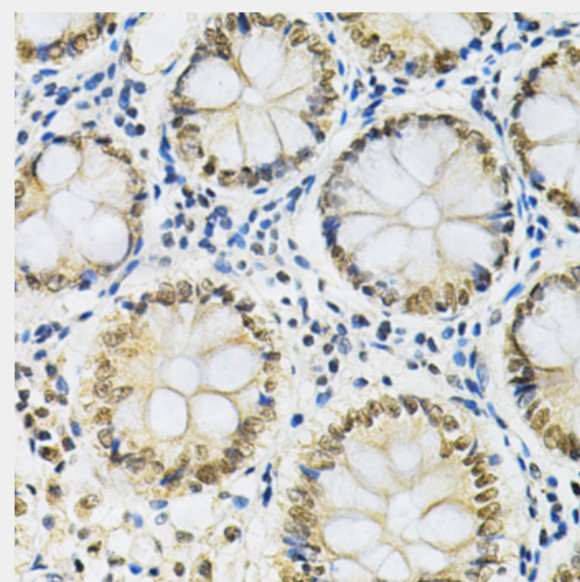
Immunohistochemistry of paraffin-embedded human stomach using SNRPE Antibody at dilution of 1:200 (40x lens).



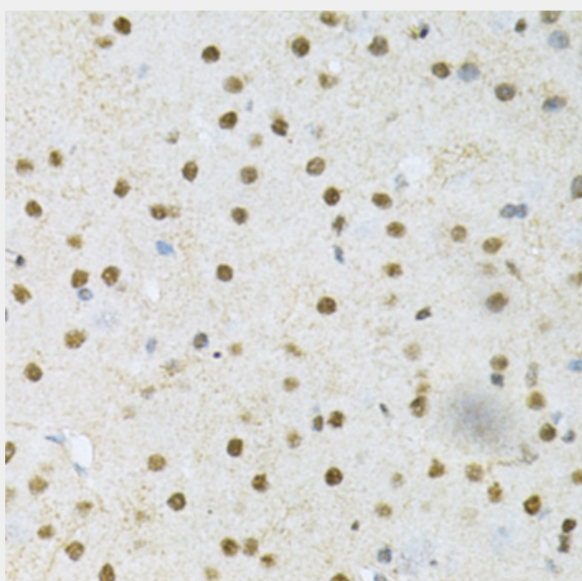
Immunohistochemistry of paraffin-embedded human colon using SNRPE Antibody at dilution of 1:100 (40x lens).



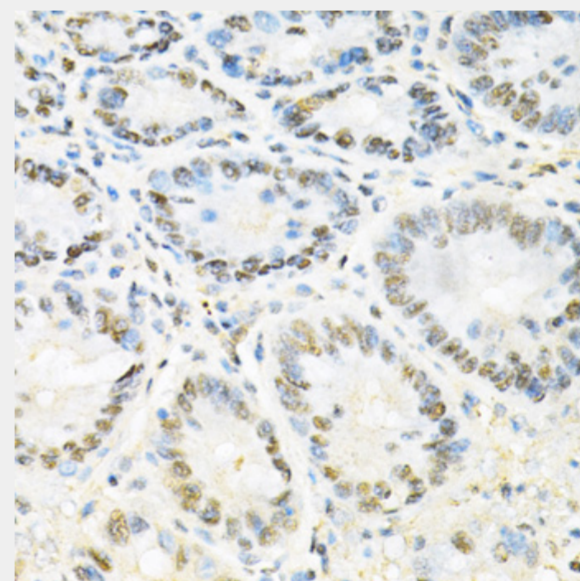
Immunohistochemistry of paraffin-embedded mouse brain using SNRPE Antibody at dilution of 1:100 (40x lens).



Immunohistochemistry of paraffin-embedded human colon using SNRPE Antibody at dilution of 1:200 (40x lens).



Immunohistochemistry of paraffin-embedded mouse brain using SNRPE Antibody at dilution of 1:200 (40x lens).



Immunohistochemistry of paraffin-embedded mouse stomach using SNRPE Antibody at dilution of 1:200 (40x lens).

All products are for RESEARCH USE ONLY. Not for diagnostic & therapeutic purposes!