

Anti PRPF3 Antibody

Catalog No: tcsa19035



Available Sizes

Size: 100μl



Specifications

Application:

WB, IHC, IF

Species Reactivity:

Human, Mouse, Rat

Host Species:

Rabbit

Immunogen / Amino acids:

Recombinant protein of human PRPF3

Conjugation:

Unconjugated

Clonality:

Polyclonal

Isotype:

IgG

Form:

Liquid

Storage Buffer:

PBS with 0.02% sodium azide, 50% glycerol, pH7.3.

Recommended Dilution:

WB 1:500 - 1:2000

IHC 1:50 - 1:200

IF 1:50 - 1:200

Storage Instruction:

Store at -20C. Avoid freeze / thaw cycles.

Alternative Names:

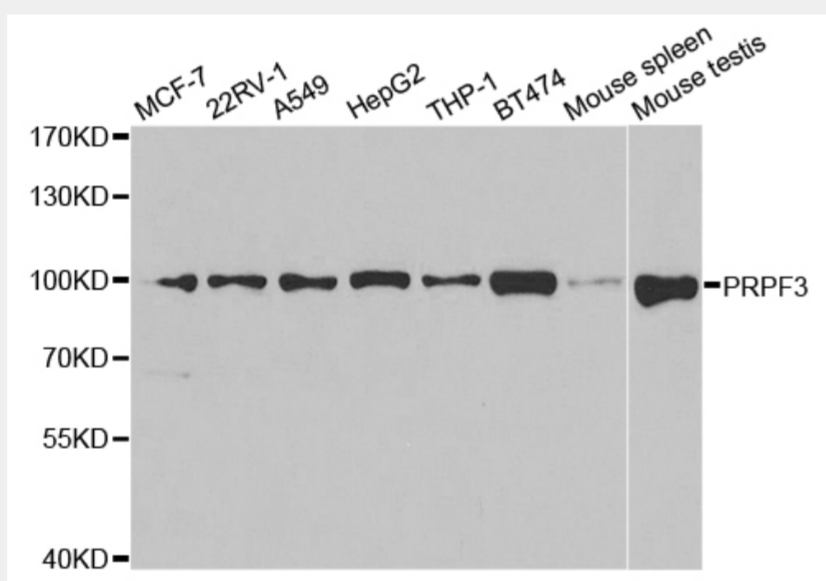
PRPF3 antibody; U4/U6 small nuclear ribonucleoprotein Prp3 antibody; Pre-mRNA-splicing factor 3 antibody; hPrp3 antibody; U4/U6 snRNP 90 kDa protein antibody; PRPF3 antibody; HPRP3 antibody; PRP3 antibody

SwissProt:

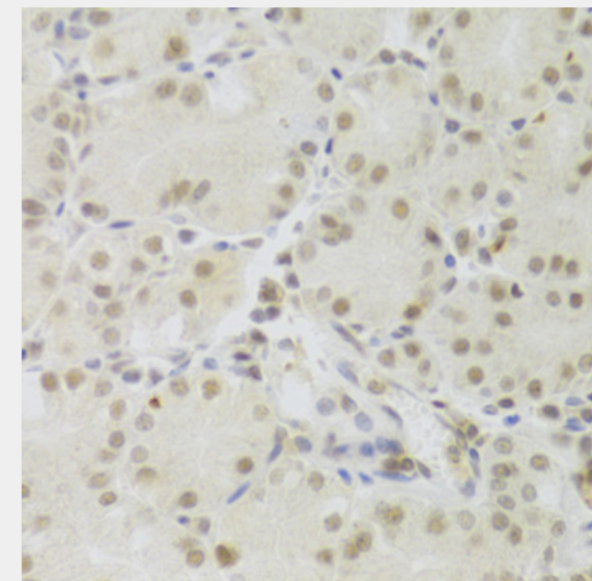
O43395

Product Description

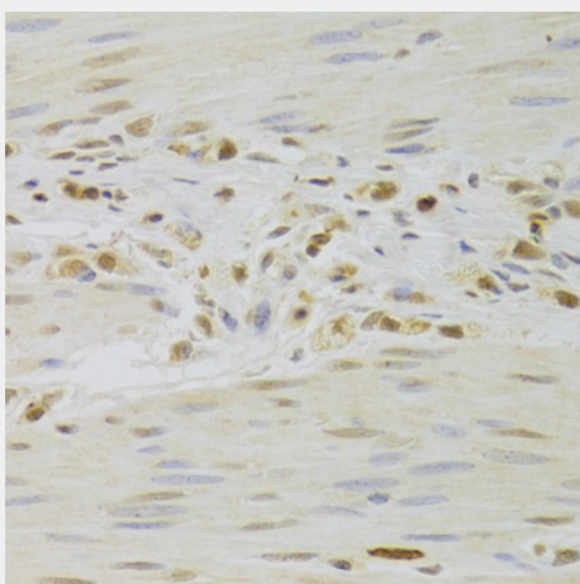
The removal of introns from nuclear pre-mRNAs occurs on complexes called spliceosomes, which are made up of 4 small nuclear ribonucleoprotein (snRNP) particles and an undefined number of transiently associated splicing factors. This gene product is one of several proteins that associate with U4 and U6 snRNPs. Mutations in this gene are associated with retinitis pigmentosa-18.



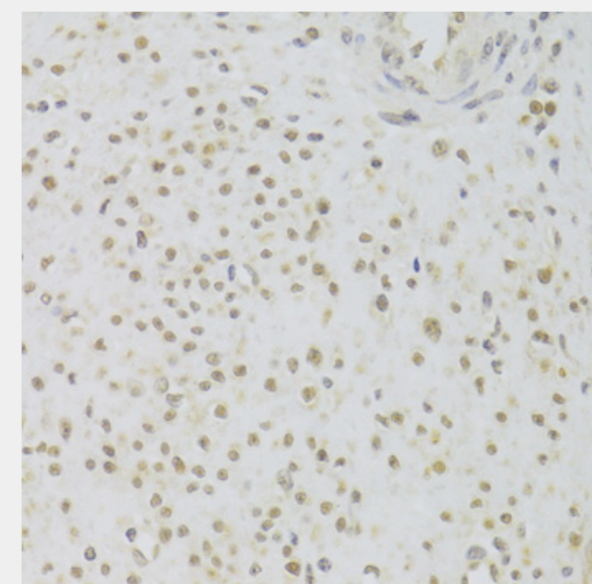
Western blot analysis of extracts of various cell lines, using PRPF3 antibody at 1:1000 dilution. Secondary antibody: HRP Goat Anti-Rabbit IgG (H+L) at 1:10000 dilution. Lysates/proteins: 25ug per lane. Blocking buffer: 3% nonfat dry milk in TBST. Detection: ECL Basic Kit. Exposure time: 90s.



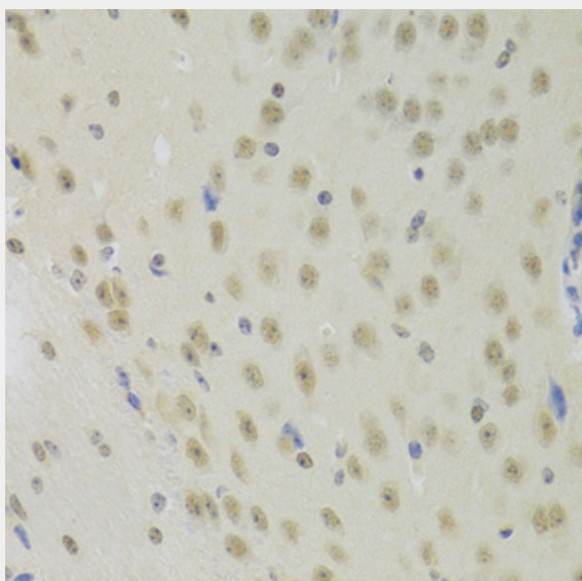
Immunohistochemistry of paraffin-embedded human stomach using PRPF3 Antibody at dilution of 1:100 (40x lens).



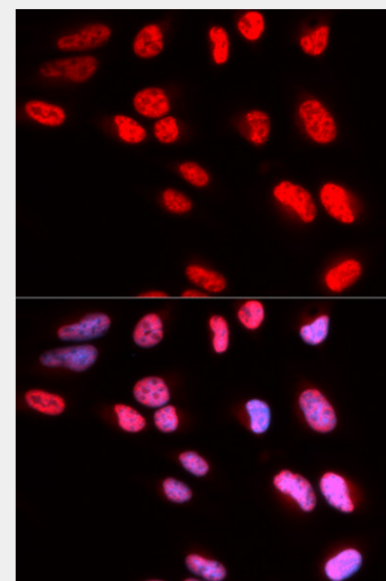
Immunohistochemistry of paraffin-embedded human gastric cancer using PRPF3 Antibody at dilution of 1:100 (40x lens).



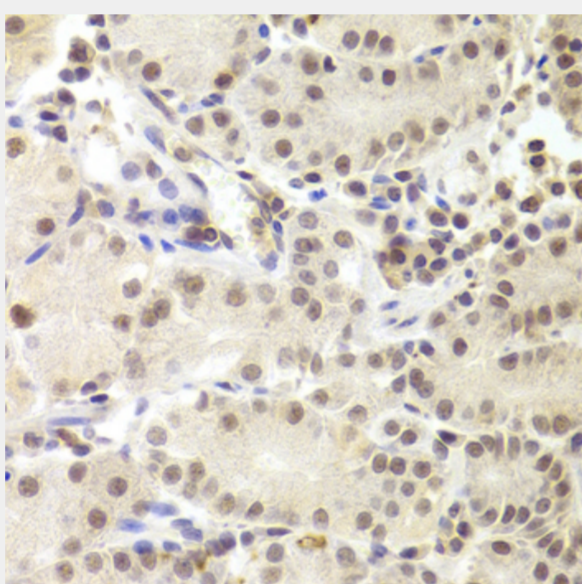
Immunohistochemistry of paraffin-embedded human leiomyoma of uterus using PRPF3 Antibody at dilution of 1:100 (40x lens).



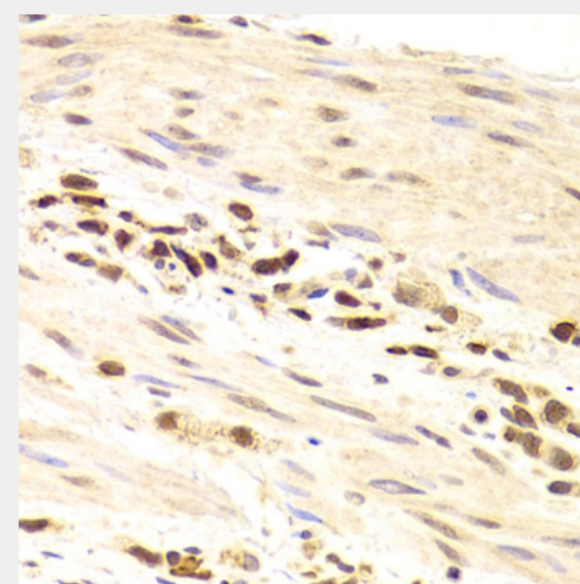
Immunohistochemistry of paraffin-embedded mouse brain using PRPF3 Antibody at dilution of 1:100 (40x lens).



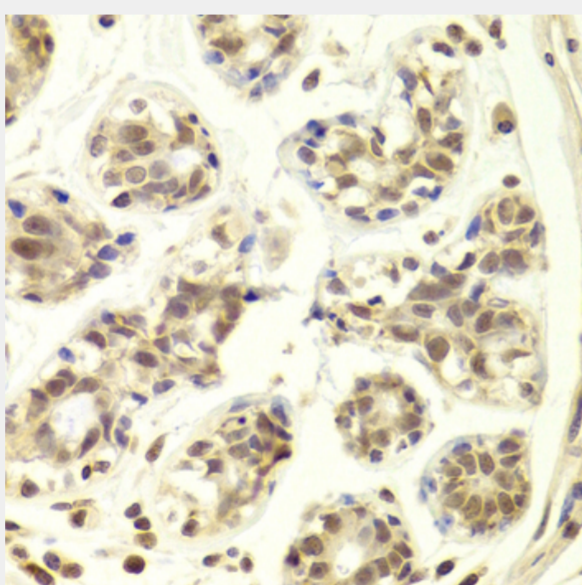
Immunofluorescence analysis of U2OS cells using PRPF3 antibody. Blue: DAPI for nuclear staining.



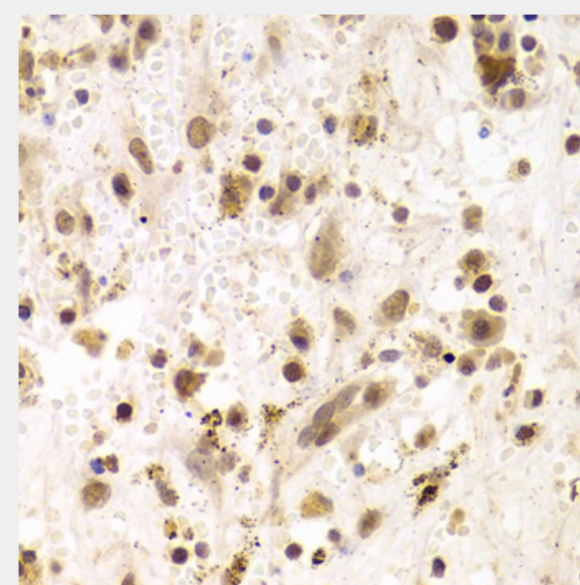
Immunohistochemistry of paraffin-embedded human stomach using PRPF3 Antibody at dilution of 1:100 (40x lens).



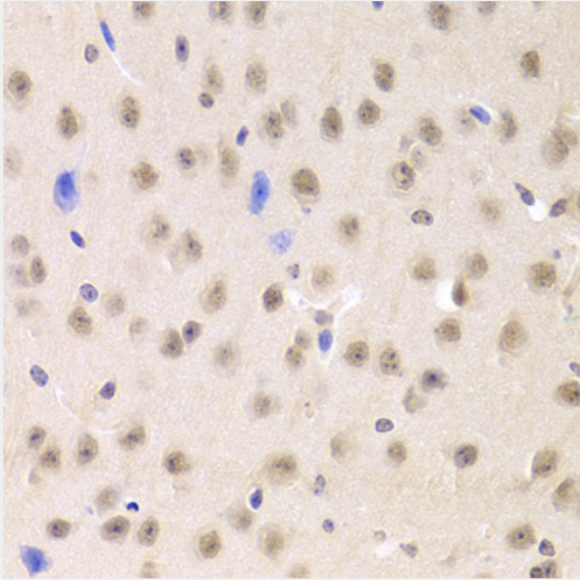
Immunohistochemistry of paraffin-embedded human gastric cancer using PRPF3 Antibody at dilution of 1:100 (40x lens).



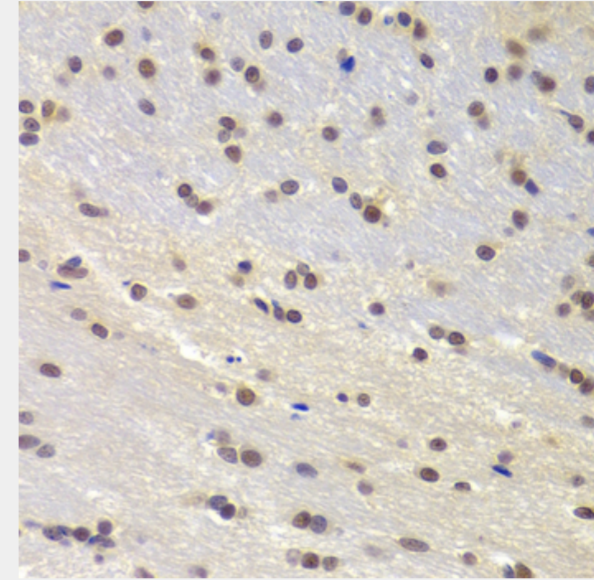
Immunohistochemistry of paraffin-embedded human breast using PRPF3 Antibody at dilution of 1:100 (40x lens).



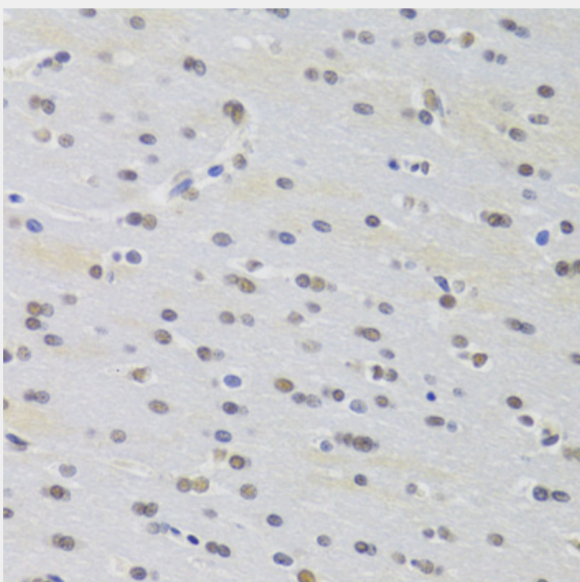
Immunohistochemistry of paraffin-embedded human liver cancer using PRPF3 Antibody at dilution of 1:100 (40x lens).



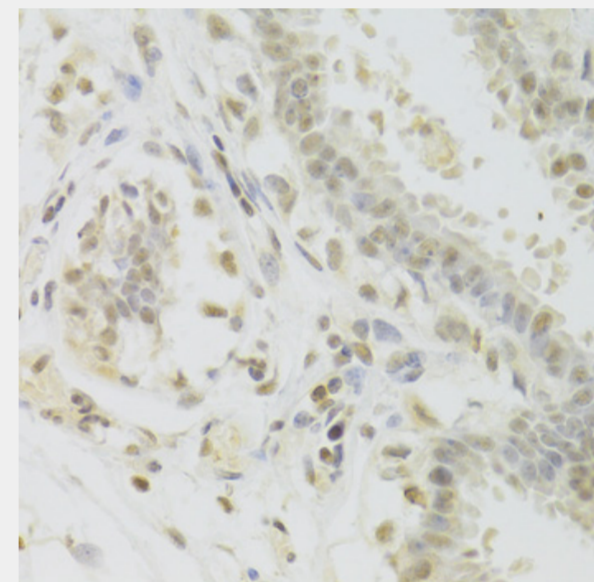
Immunohistochemistry of paraffin-embedded mouse brain using PRPF3 Antibody at dilution of 1:100 (40x lens).



Immunohistochemistry of paraffin-embedded rat brain using PRPF3 Antibody at dilution of 1:100 (40x lens).



Immunohistochemistry of paraffin-embedded rat brain using PRPF3 Antibody at dilution of 1:100 (40x lens).



Immunohistochemistry of paraffin-embedded human breast using PRPF3 Antibody at dilution of 1:100 (40x lens).

All products are for RESEARCH USE ONLY. Not for diagnostic & therapeutic purposes!