

# Anti RPS6KA3 Antibody

Catalog No: tcsa18990



## Available Sizes

---

**Size:** 100μl

---



## Specifications

---

**Application:**

WB, IHC, IF

---

**Species Reactivity:**

Human, Mouse, Rat

---

**Host Species:**

Rabbit

---

**Immunogen / Amino acids:**

Recombinant protein of human RPS6KA3

---

**Conjugation:**

Unconjugated

---

**Clonality:**

Polyclonal

---

**Isotype:**

IgG

---

**Form:**

Liquid

---

**Storage Buffer:**

PBS with 0.02% sodium azide, 50% glycerol, pH7.3.

---

**Recommended Dilution:**

WB 1:500 - 1:2000

IHC 1:50 - 1:200

IF 1:20 - 1:50

---

**Storage Instruction:**

Store at -20C. Avoid freeze / thaw cycles.

**Alternative Names:**

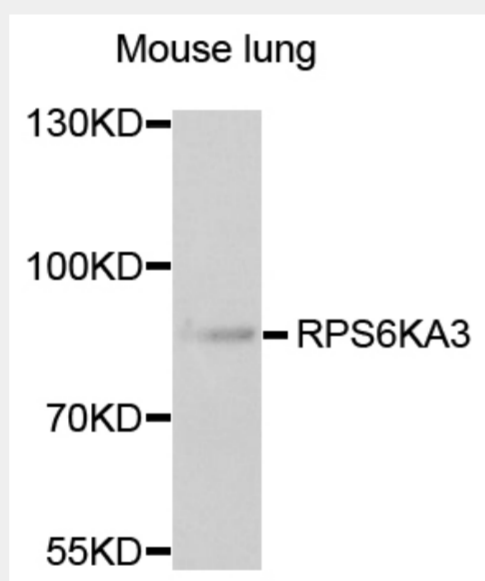
RPS6KA3 antibody; Ribosomal protein S6 kinase alpha-3 antibody; S6K-alpha-3 antibody; RPS6KA3 antibody; ISPK1 antibody; MAPKAPK1B antibody; RSK2 antibody

**SwissProt:**

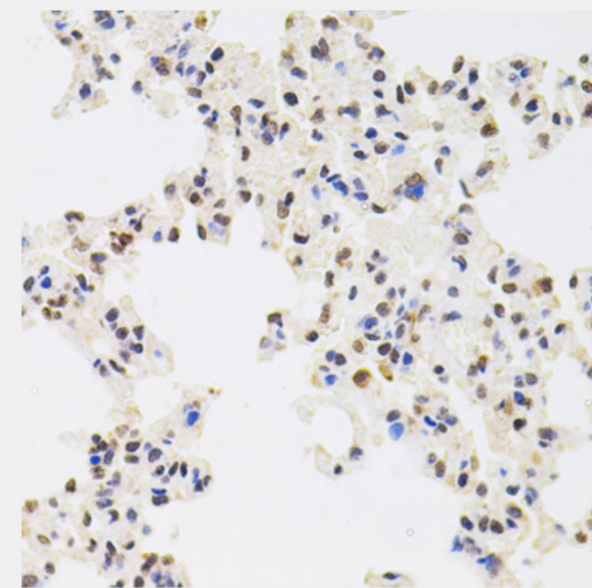
P51812

**Product Description**

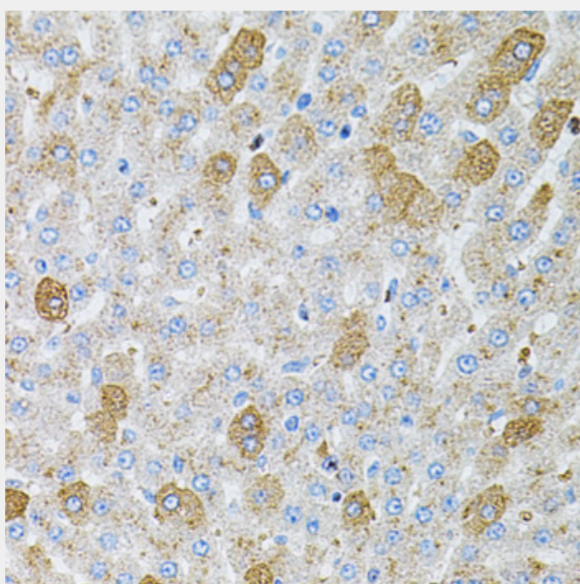
This gene encodes a member of the RSK (ribosomal S6 kinase) family of serine/threonine kinases. This kinase contains 2 non-identical kinase catalytic domains and phosphorylates various substrates, including members of the mitogen-activated kinase (MAPK) signalling pathway. The activity of this protein has been implicated in controlling cell growth and differentiation. Mutations in this gene have been associated with Coffin-Lowry syndrome (CLS).



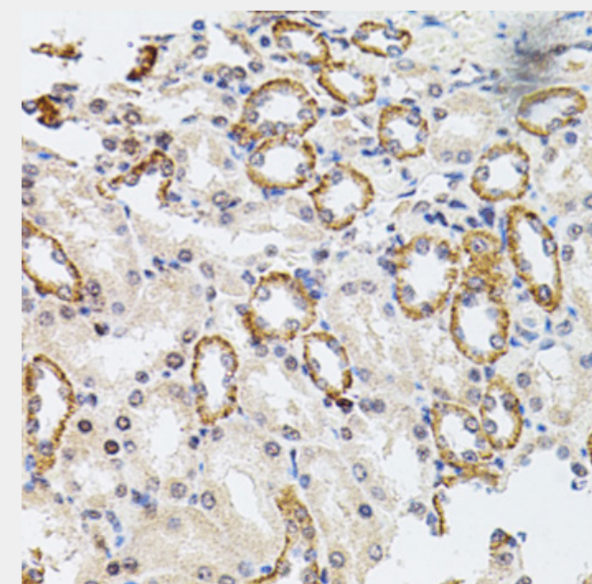
Western blot analysis of extracts of mouse lung, using RPS6KA3 antibody at 1:1000 dilution. Secondary antibody: HRP Goat Anti-Rabbit IgG (H+L) at 1:10000 dilution. Lysates/proteins: 25ug per lane. Blocking buffer: 3% nonfat dry milk in TBST. Detection: ECL Basic Kit. Exposure time: 90s.



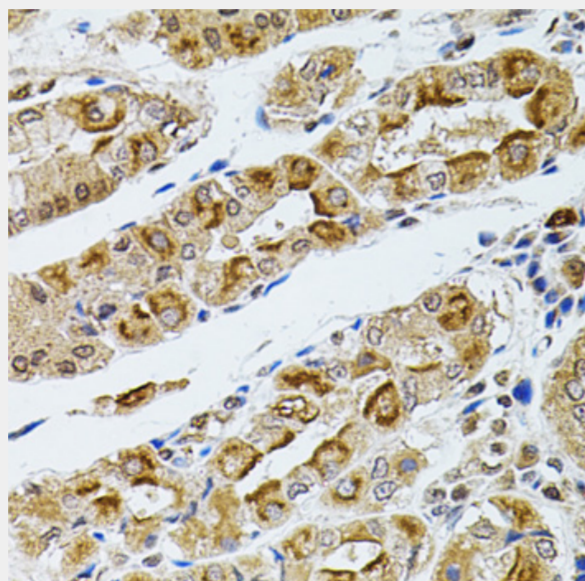
Immunohistochemistry of paraffin-embedded rat lung using RPS6KA3 antibody at dilution of 1:100 (40x lens).



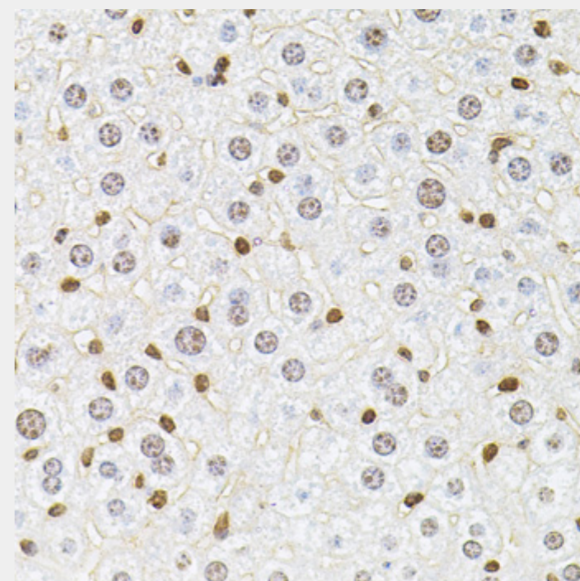
Immunohistochemistry of paraffin-embedded rat liver using RPS6KA3 antibody at dilution of 1:100 (40x lens).



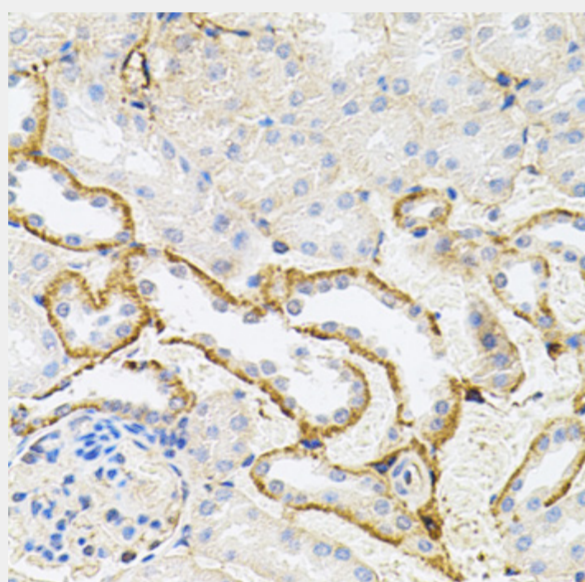
Immunohistochemistry of paraffin-embedded rat kidney using RPS6KA3 antibody at dilution of 1:100 (40x lens).



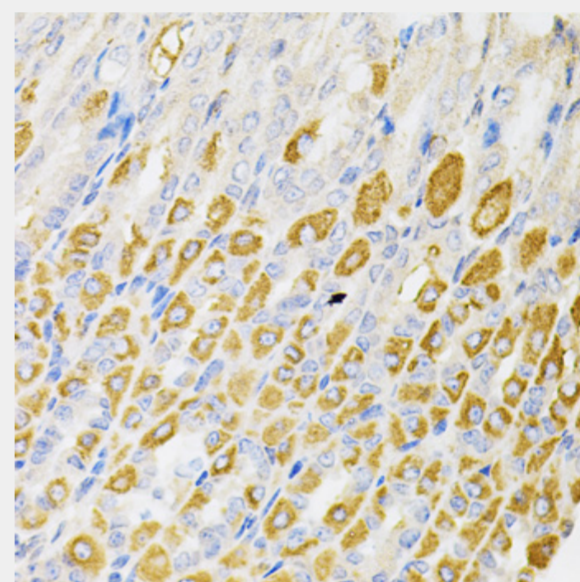
Immunohistochemistry of paraffin-embedded human stomach using RPS6KA3 antibody at dilution of 1:100 (40x lens).



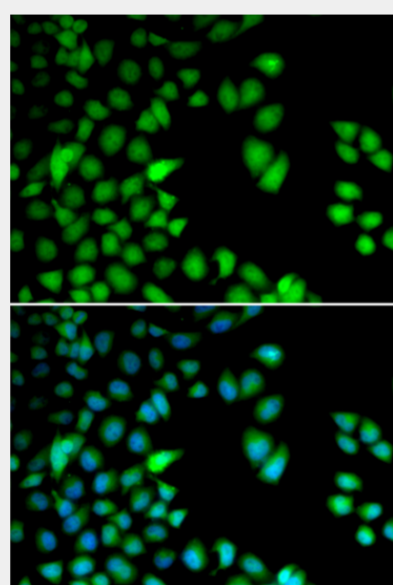
Immunohistochemistry of paraffin-embedded mouse liver using RPS6KA3 antibody at dilution of 1:100 (40x lens).



Immunohistochemistry of paraffin-embedded mouse kidney using RPS6KA3 antibody at dilution of 1:100 (40x lens).



Immunohistochemistry of paraffin-embedded mouse stomach using RPS6KA3 antibody at dilution of 1:100 (40x lens).



Immunofluorescence analysis of HeLa cells using RPS6KA3 antibody. Blue: DAPI for nuclear staining.

All products are for RESEARCH USE ONLY. Not for diagnostic & therapeutic purposes!