

Anti PA2G4 Antibody

Catalog No: tcsa18942



Available Sizes

Size: 100μl



Specifications

Application:

WB, IHC, IF

Species Reactivity:

Human, Mouse, Rat

Host Species:

Rabbit

Immunogen / Amino acids:

Recombinant protein of human PA2G4

Conjugation:

Unconjugated

Clonality:

Polyclonal

Isotype:

IgG

Form:

Liquid

Storage Buffer:

PBS with 0.02% sodium azide, 50% glycerol, pH7.3.

Recommended Dilution:

WB 1:500 - 1:2000

IHC 1:50 - 1:200

IF 1:50 - 1:200

Storage Instruction:

Store at -20C. Avoid freeze / thaw cycles.

Alternative Names:

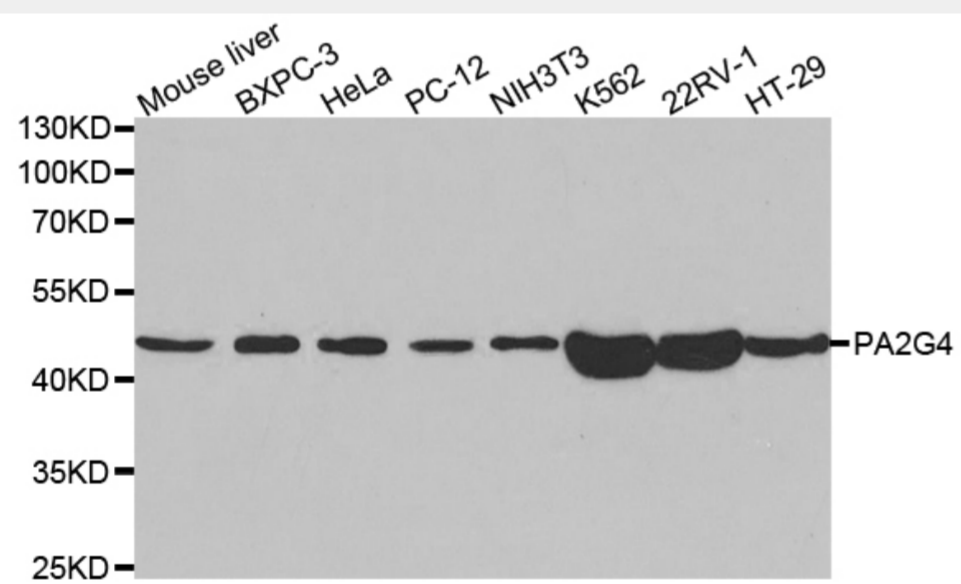
PA2G4 antibody; Proliferation-associated protein 2G4 antibody; Cell cycle protein p38-2G4 homolog antibody; hG4-1 antibody; ErbB3-binding protein 1 antibody; PA2G4 antibody; EBP1 antibody

SwissProt:

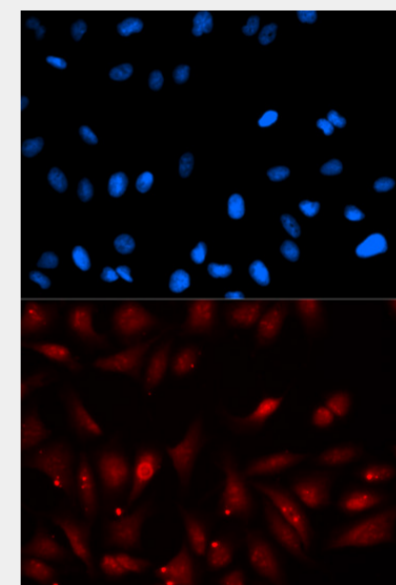
Q9UQ80

Product Description

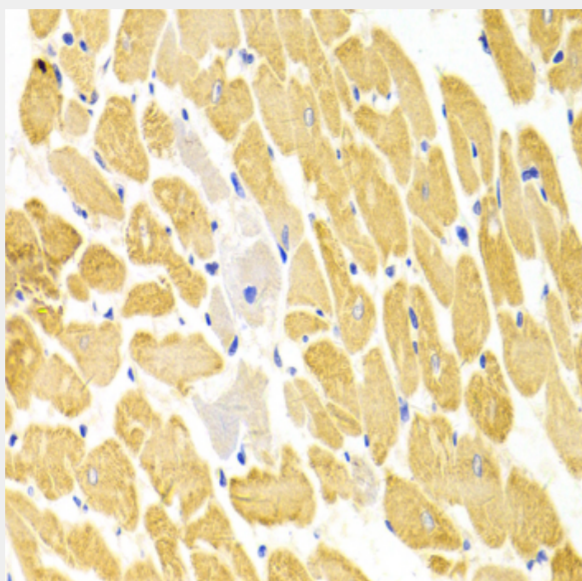
This gene encodes an RNA-binding protein that is involved in growth regulation. This protein is present in pre-ribosomal ribonucleoprotein complexes and may be involved in ribosome assembly and the regulation of intermediate and late steps of rRNA processing. This protein can interact with the cytoplasmic domain of the ErbB3 receptor and may contribute to transducing growth regulatory signals. This protein is also a transcriptional co-repressor of androgen receptor-regulated genes and other cell cycle regulatory genes through its interactions with histone deacetylases. This protein has been implicated in growth inhibition and the induction of differentiation of human cancer cells. Six pseudogenes, located on chromosomes 3, 6, 9, 18, 20 and X, have been identified.



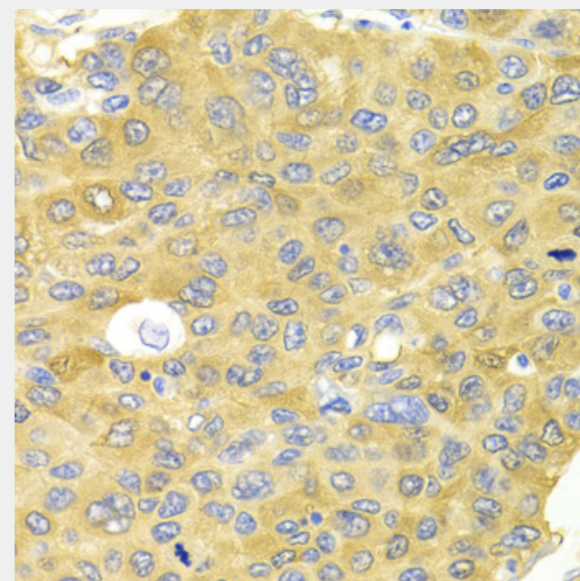
Western blot analysis of extracts of various cell lines, using PA2G4 antibody at 1:1000 dilution. Secondary antibody: HRP Goat Anti-Rabbit IgG (H+L) at 1:10000 dilution. Lysates/proteins: 25ug per lane. Blocking buffer: 3% nonfat dry milk in TBST.



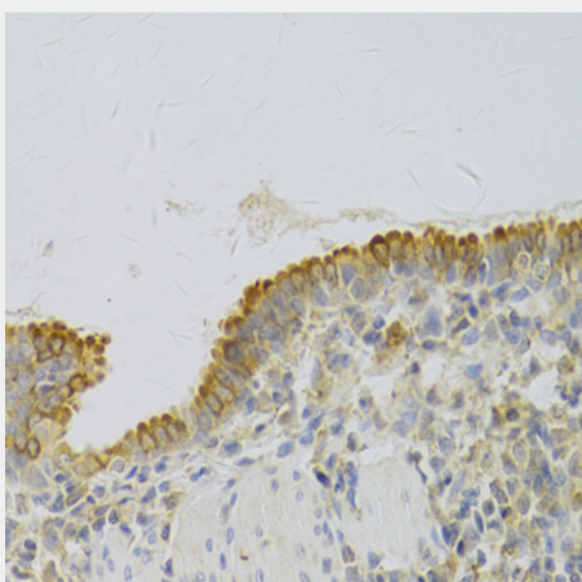
Immunofluorescence analysis of U2OS cells using PA2G4 antibody. Blue: DAPI for nuclear staining.



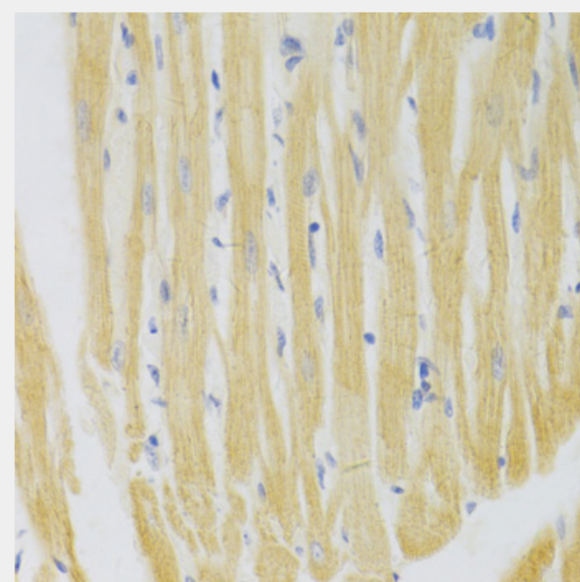
Immunohistochemistry of paraffin-embedded rat heart using PA2G4 Antibody at dilution of 1:100 (40x lens).



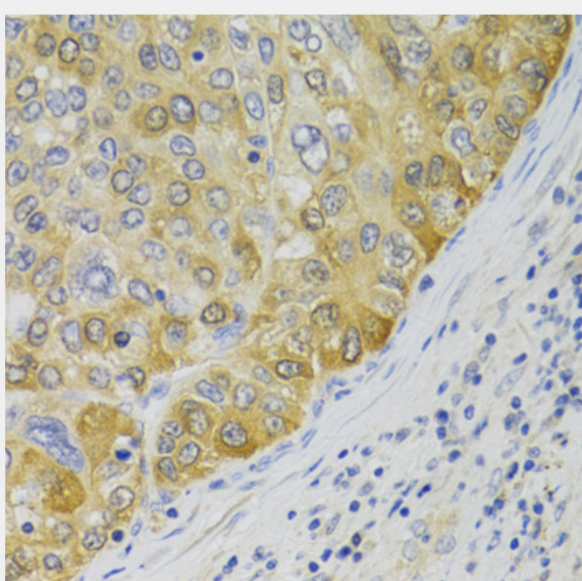
Immunohistochemistry of paraffin-embedded human liver cancer using PA2G4 Antibody at dilution of 1:100 (40x lens).



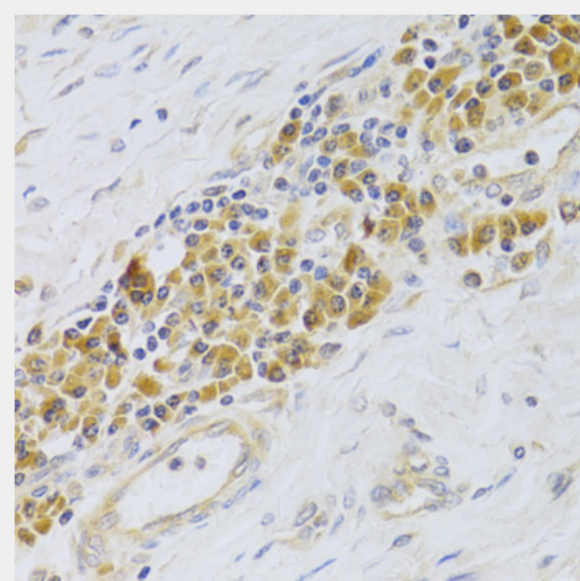
Immunohistochemistry of paraffin-embedded rat lung using PA2G4 Antibody at dilution of 1:100 (40x lens).



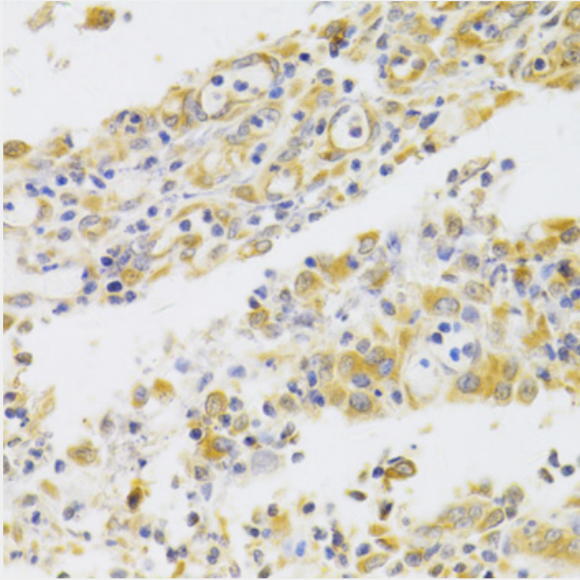
Immunohistochemistry of paraffin-embedded rat heart using PA2G4 Antibody at dilution of 1:100 (40x lens).



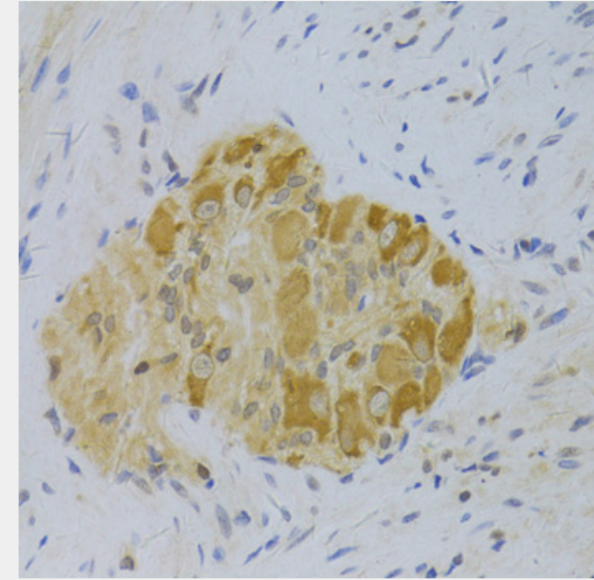
Immunohistochemistry of paraffin-embedded human liver cancer using PA2G4 Antibody at dilution of 1:100 (40x lens).



Immunohistochemistry of paraffin-embedded human esophagus using PA2G4 Antibody at dilution of 1:100 (40x lens).



Immunohistochemistry of paraffin-embedded human gastric cancer using PA2G4 Antibody at dilution of 1:100 (40x lens).



Immunohistochemistry of paraffin-embedded human rectum using PA2G4 Antibody at dilution of 1:100 (40x lens).

All products are for RESEARCH USE ONLY. Not for diagnostic & therapeutic purposes!