

Anti ID3 Antibody

Catalog No: tcsa18941



Available Sizes

Size: 100μl



Specifications

Application:

WB, IHC, IF

Species Reactivity:

Human, Mouse, Rat

Host Species:

Rabbit

Immunogen / Amino acids:

Recombinant protein of human ID3

Conjugation:

Unconjugated

Clonality:

Polyclonal

Isotype:

IgG

Form:

Liquid

Storage Buffer:

PBS with 0.02% sodium azide, 50% glycerol, pH7.3.

Recommended Dilution:

WB 1:500 - 1:2000

IHC 1:50 - 1:200

IF 1:50 - 1:100

Storage Instruction:

Store at -20C. Avoid freeze / thaw cycles.

Alternative Names:

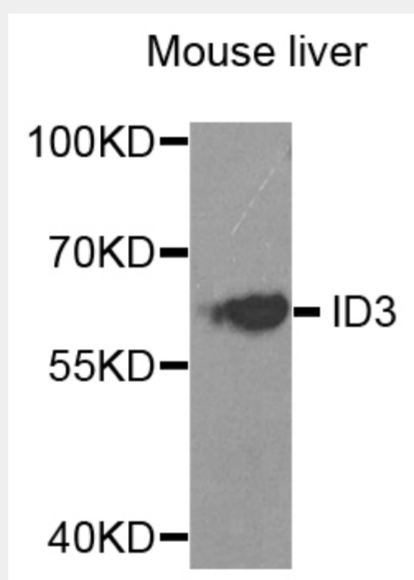
ID3 antibody; DNA-binding protein inhibitor ID-3 antibody; Class B basic helix-loop-helix protein 25 antibody; bHLHb25 antibody; Helix-loop-helix protein HEIR-1 antibody; ID-like protein inhibitor HLH 1R21 antibody; Inhibitor of DNA bind

SwissProt:

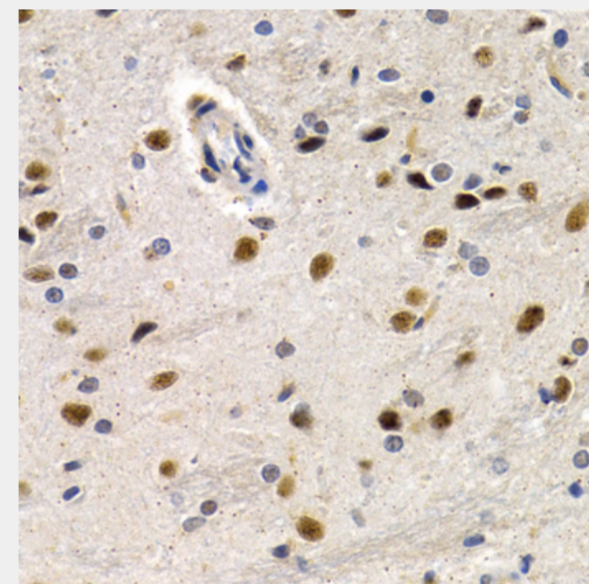
Q02535

Product Description

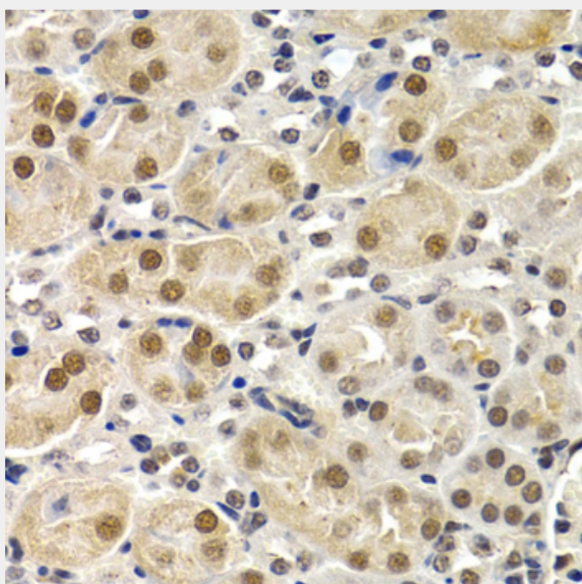
The protein encoded by this gene is a helix-loop-helix (HLH) protein that can form heterodimers with other HLH proteins. However, the encoded protein lacks a basic DNA-binding domain and therefore inhibits the DNA binding of any HLH protein with which it interacts.



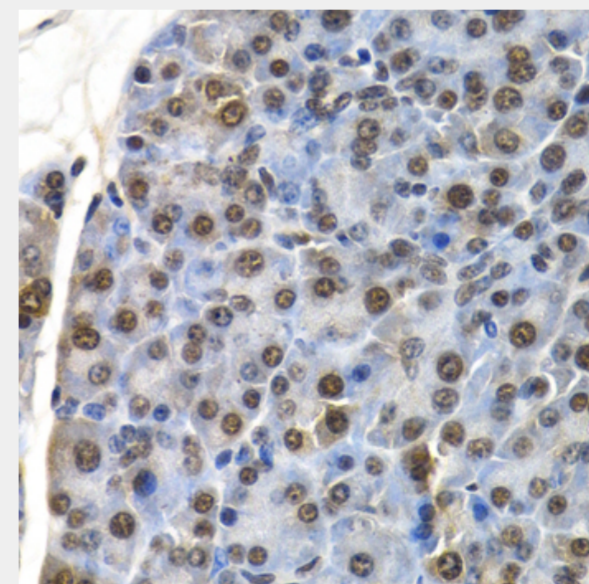
Western blot analysis of extracts of mouse liver, using ID3 antibody at 1:1000 dilution. Secondary antibody: HRP Goat Anti-Rabbit IgG (H+L) at 1:10000 dilution. Lysates/proteins: 25ug per lane. Blocking buffer: 3% nonfat dry milk in TBST.



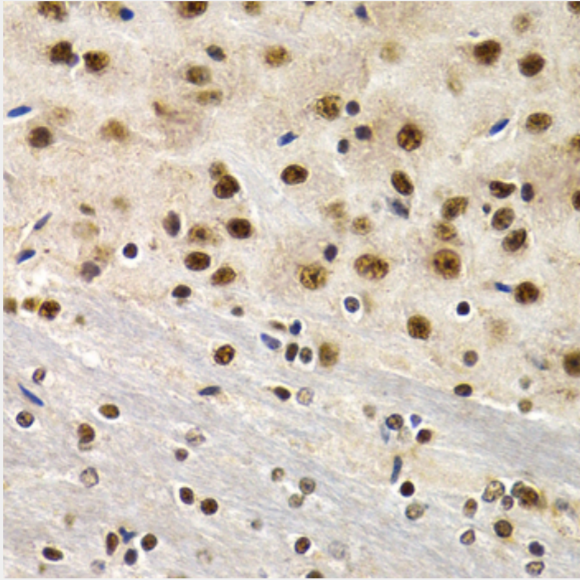
Immunohistochemistry of paraffin-embedded rat brain using ID3 antibody at dilution of 1:200 (40x lens).



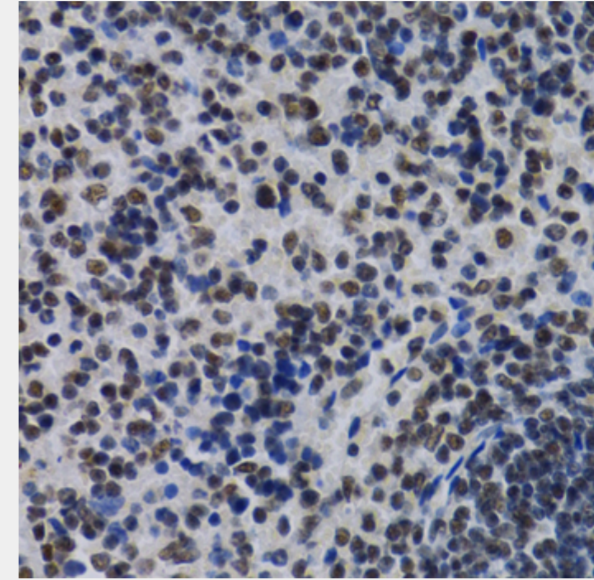
Immunohistochemistry of paraffin-embedded mouse kidney using ID3 antibody at dilution of 1:200 (40x lens).



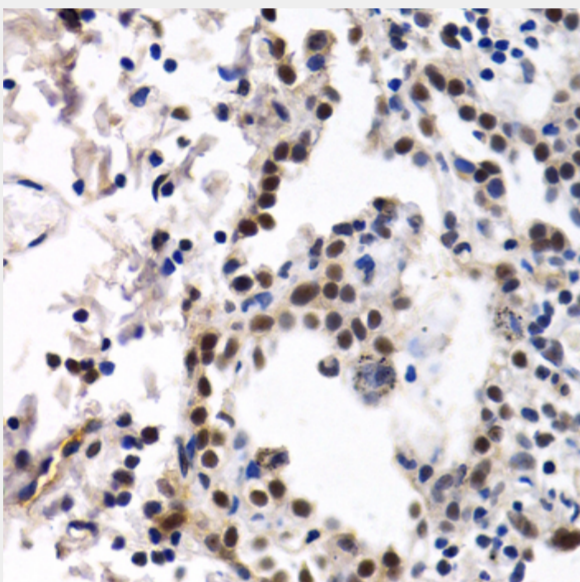
Immunohistochemistry of paraffin-embedded mouse pancreas using ID3 antibody at dilution of 1:200 (40x lens).



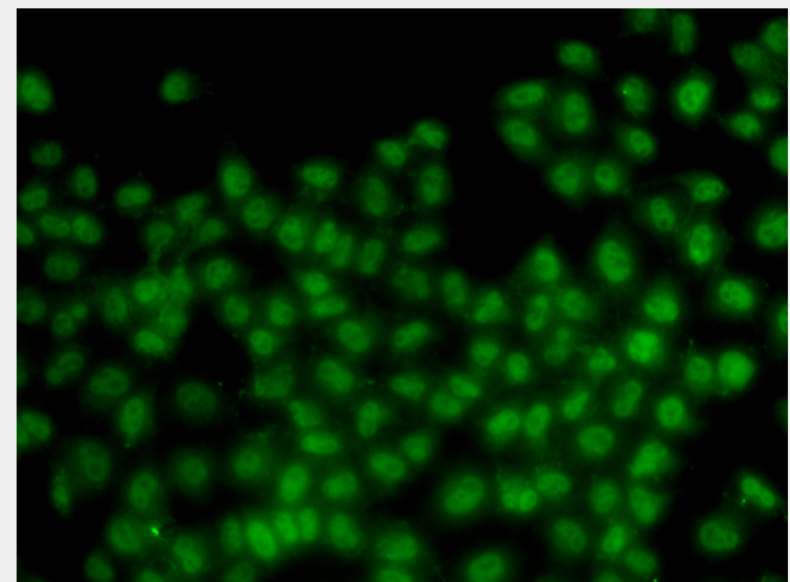
Immunohistochemistry of paraffin-embedded mouse brain using ID3 antibody at dilution of 1:200 (40x lens).



Immunohistochemistry of paraffin-embedded mouse spleen using ID3 antibody at dilution of 1:200 (40x lens).



Immunohistochemistry of paraffin-embedded human lung cancer using ID3 antibody at dilution of 1:200 (40x lens).



Immunofluorescence analysis of HeLa cells using ID3 antibody.

All products are for RESEARCH USE ONLY. Not for diagnostic & therapeutic purposes!