

Anti VAPB Antibody

Catalog No: tcsa18929



Available Sizes

Size: 100μl



Specifications

Application:

WB, IHC, IF

Species Reactivity:

Human, Mouse

Host Species:

Rabbit

Immunogen / Amino acids:

Recombinant protein of human VAPB

Conjugation:

Unconjugated

Clonality:

Polyclonal

Isotype:

IgG

Form:

Liquid

Storage Buffer:

PBS with 0.02% sodium azide, 50% glycerol, pH7.3.

Recommended Dilution:

WB 1:500 - 1:2000

IHC 1:50 - 1:200

IF 1:20 - 1:50

Storage Instruction:

Store at -20C. Avoid freeze / thaw cycles.

Alternative Names:

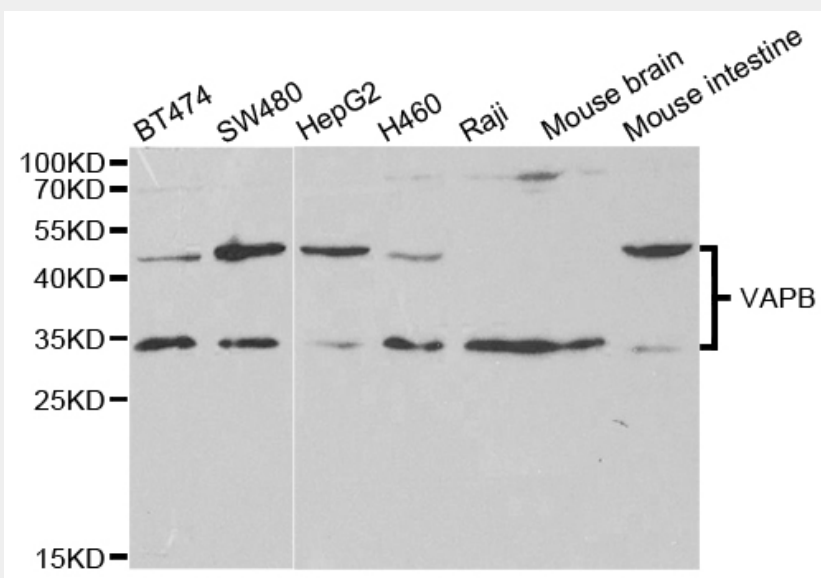
VAPB antibody; Vesicle-associated membrane protein-associated protein B/C antibody; VAMP-B/VAMP-C antibody; VAMP-associated protein B/C antibody; VAP-B/VAP-C antibody; VAPB antibody; UNQ484/PRO983 antibody

SwissProt:

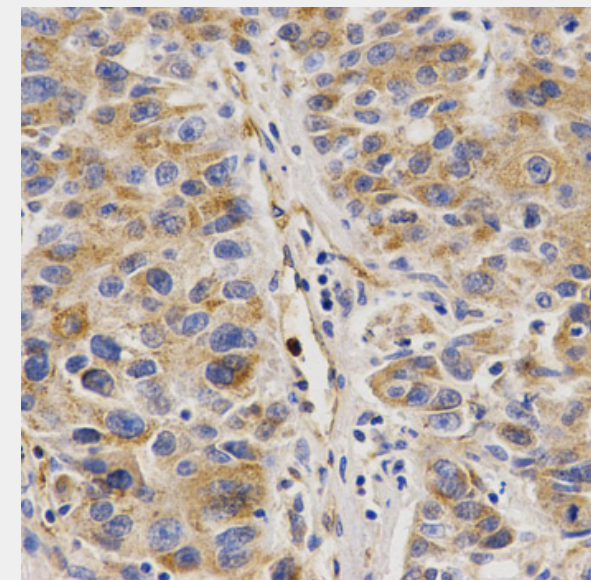
O95292

Product Description

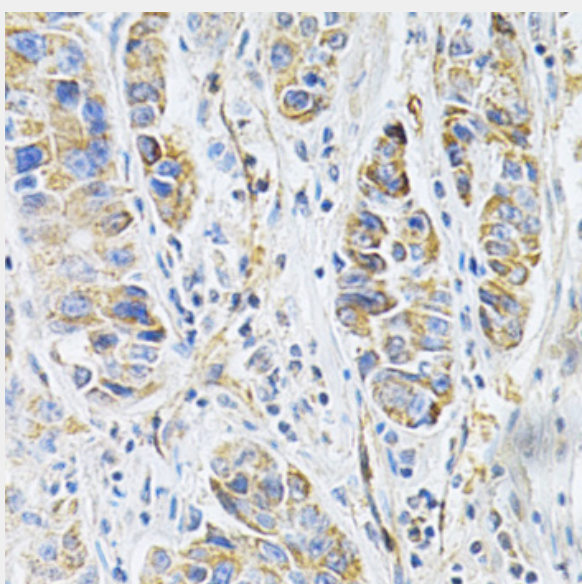
The protein encoded by this gene is a type IV membrane protein found in plasma and intracellular vesicle membranes. The encoded protein is found as a homodimer and as a heterodimer with VAPA. This protein also can interact with VAMP1 and VAMP2 and may be involved in vesicle trafficking.



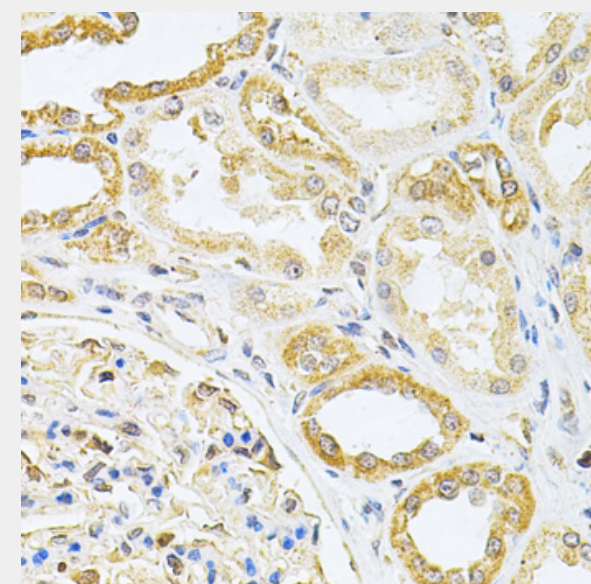
Western blot analysis of extracts of various cell lines, using VAPB antibody at 1:1000 dilution. Secondary antibody: HRP Goat Anti-Rabbit IgG (H+L) at 1:10000 dilution. Lysates/proteins: 25ug per lane. Blocking buffer: 3% nonfat dry milk in TBST.



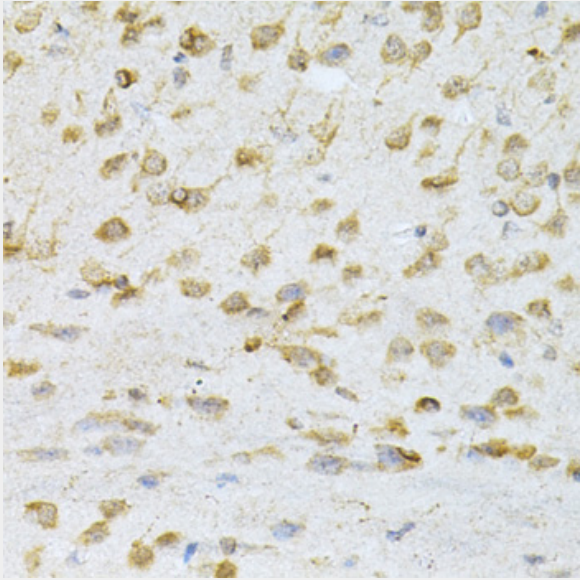
Immunohistochemistry of paraffin-embedded human liver cancer using VAPB Antibody at dilution of 1:200 (40x lens).



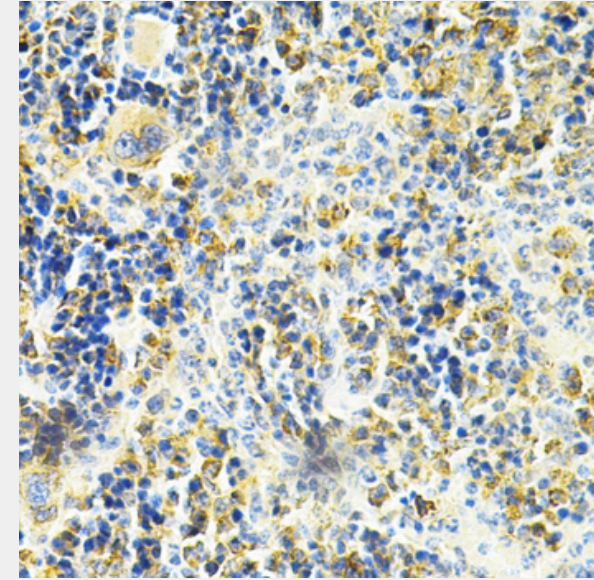
Immunohistochemistry of paraffin-embedded human liver cancer using VAPB Antibody at dilution of 1:200 (40x lens).



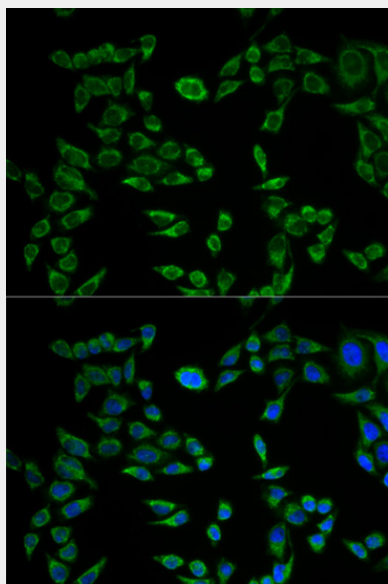
Immunohistochemistry of paraffin-embedded human kidney cancer using VAPB Antibody at dilution of 1:200 (40x lens).



Immunohistochemistry of paraffin-embedded mouse brain using VAPB Antibody at dilution of 1:200 (40x lens).



Immunohistochemistry of paraffin-embedded mouse spleen using VAPB Antibody at dilution of 1:200 (40x lens).



Immunofluorescence analysis of HeLa cells using VAPB antibody. Blue: DAPI for nuclear staining.

All products are for RESEARCH USE ONLY. Not for diagnostic & therapeutic purposes!