

Anti SMARCE1 Antibody

Catalog No: tcsa18927



Available Sizes

Size: 100µl



Specifications

Application:

WB, IHC, IF

Species Reactivity:

Human, Mouse

Host Species:

Rabbit

Immunogen / Amino acids:

Recombinant protein of human SMARCE1

Conjugation:

Unconjugated

Clonality:

Polyclonal

Isotype:

IgG

Form:

Liquid

Storage Buffer:

PBS with 0.02% sodium azide, 50% glycerol, pH7.3.

Recommended Dilution:

WB 1:500 - 1:2000

IHC 1:50 - 1:200

IF 1:50 - 1:200

Storage Instruction:

Store at -20C. Avoid freeze / thaw cycles.

Alternative Names:

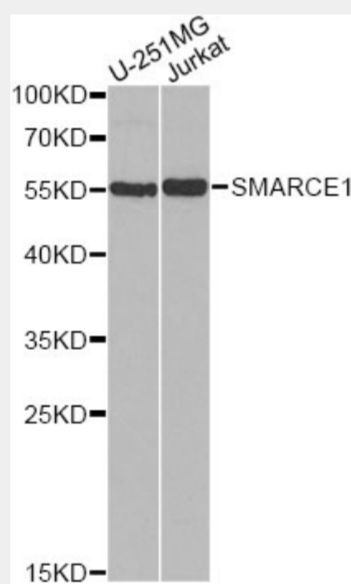
SMARCE1 antibody; SWI/SNF-related matrix-associated actin-dependent regulator of chromatin subfamily E member 1 antibody; BRG1-associated factor 57 antibody; BAF57 antibody; SMARCE1 antibody; BAF57 antibody

SwissProt:

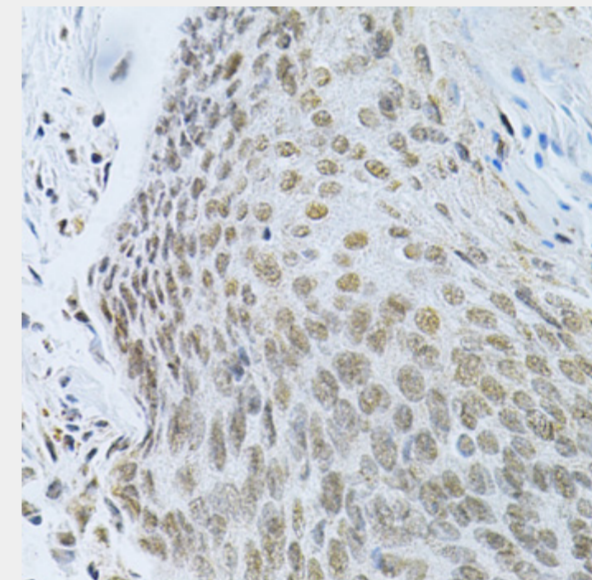
Q969G3

Product Description

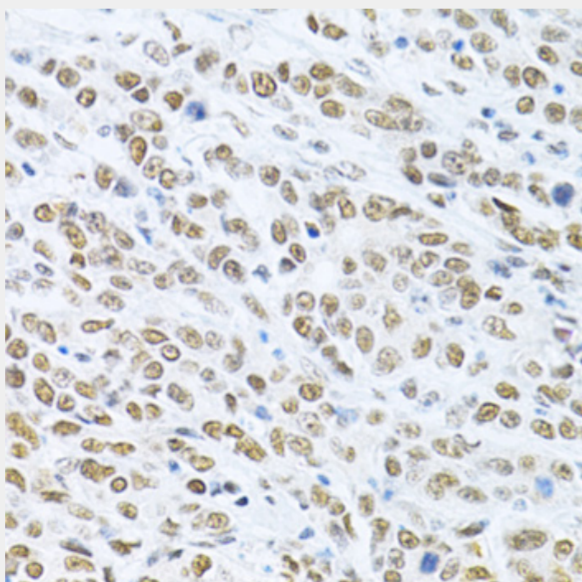
The protein encoded by this gene is part of the large ATP-dependent chromatin remodeling complex SWI/SNF, which is required for transcriptional activation of genes normally repressed by chromatin. The encoded protein, either alone or when in the SWI/SNF complex, can bind to 4-way junction DNA, which is thought to mimic the topology of DNA as it enters or exits the nucleosome. The protein contains a DNA-binding HMG domain, but disruption of this domain does not abolish the DNA-binding or nucleosome-displacement activities of the SWI/SNF complex. Unlike most of the SWI/SNF complex proteins, this protein has no yeast counterpart.



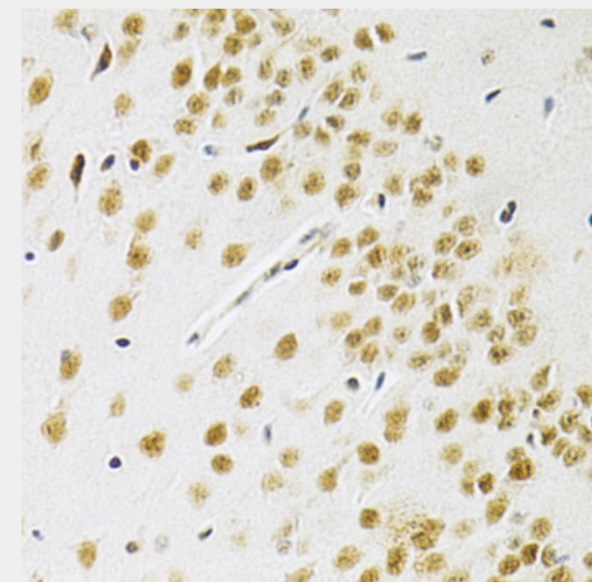
Western blot analysis of extracts of various cell lines, using SMARCE1 antibody at 1:1000 dilution. Secondary antibody: HRP Goat Anti-Rabbit IgG (H+L) at 1:10000 dilution. Lysates/proteins: 25ug per lane. Blocking buffer: 3% nonfat dry milk in TBST. Detection: ECL Basic Kit. Exposure time: 90s.



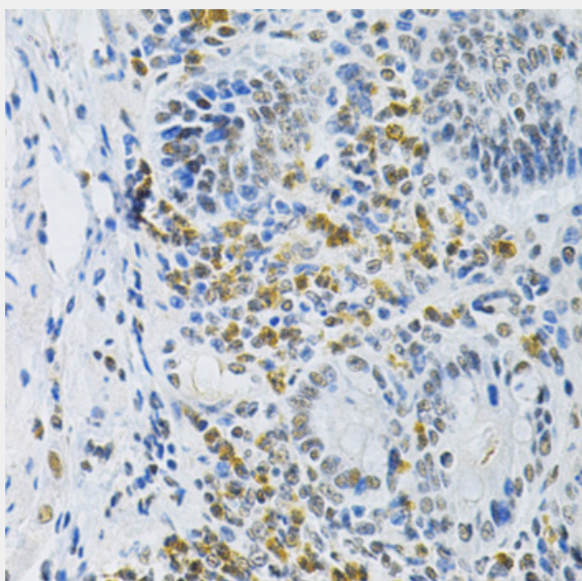
Immunohistochemistry of paraffin-embedded human esophageal cancer using SMARCE1 Antibody at dilution of 1:200 (40x lens).



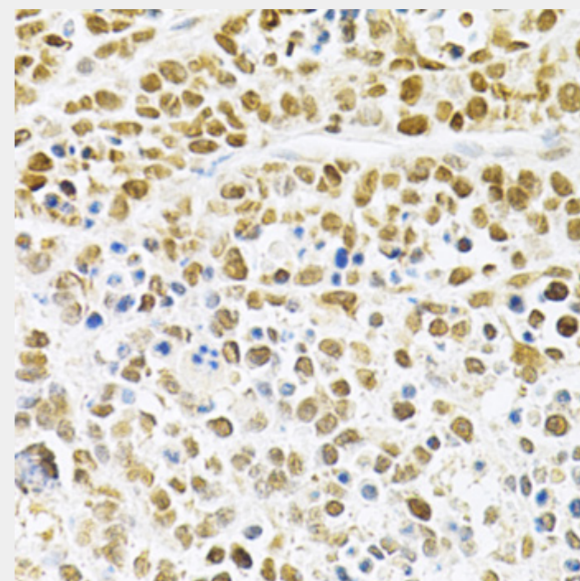
Immunohistochemistry of paraffin-embedded human gastric cancer using SMARCE1 Antibody at dilution of 1:200 (40x lens).



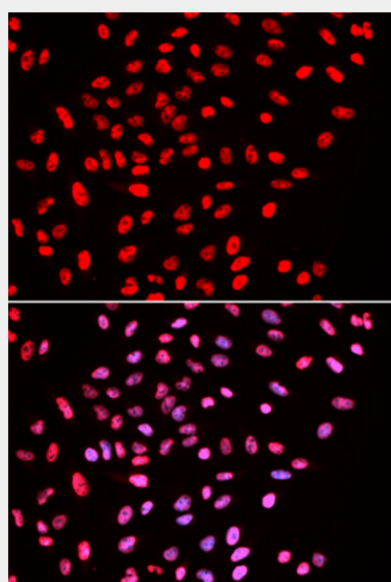
Immunohistochemistry of paraffin-embedded mouse brain using SMARCE1 Antibody at dilution of 1:200 (40x lens).



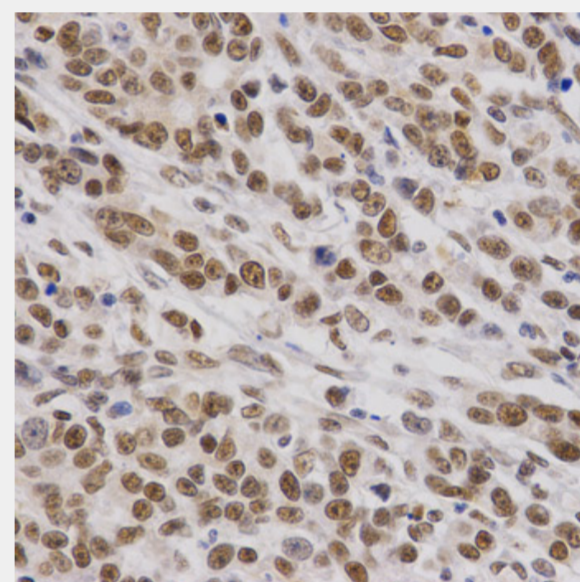
Immunohistochemistry of paraffin-embedded mouse stomach using SMARCE1 Antibody at dilution of 1:200 (40x lens).



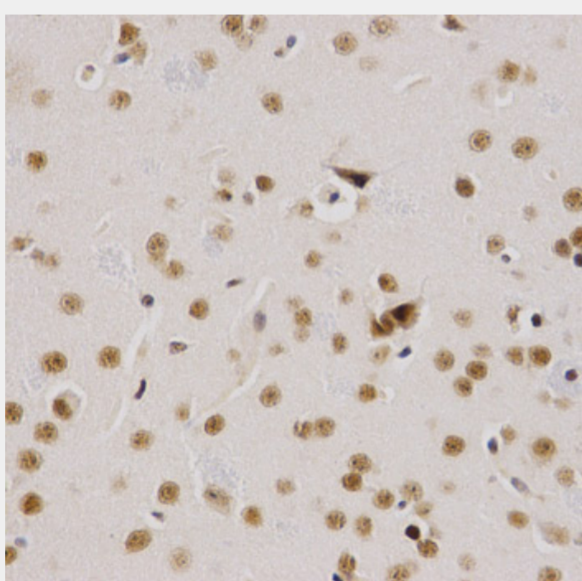
Immunohistochemistry of paraffin-embedded mouse cancer using SMARCE1 Antibody at dilution of 1:200 (40x lens).



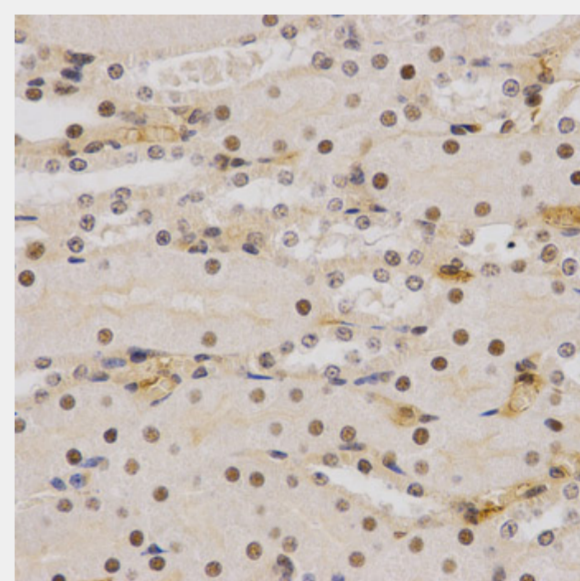
Immunofluorescence analysis of U2OS cells using SMARCE1 antibody. Blue: DAPI for nuclear staining.



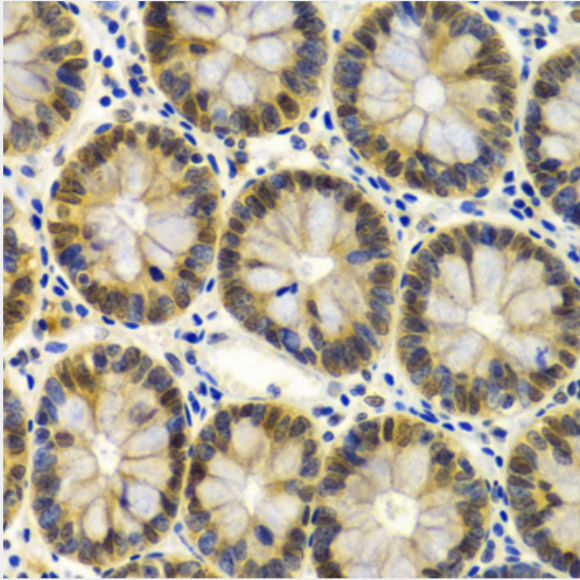
Immunohistochemistry of paraffin-embedded human gastric cancer using SMARCE1 Antibody at dilution of 1:200 (40x lens).



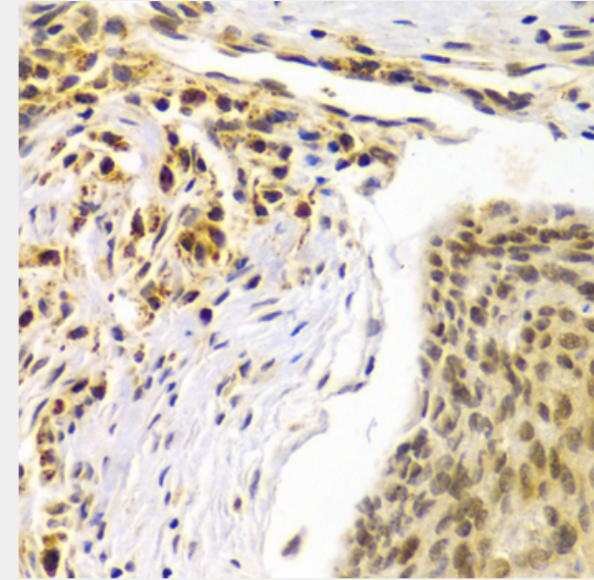
Immunohistochemistry of paraffin-embedded mouse brain using SMARCE1 Antibody at dilution of 1:200 (40x lens).



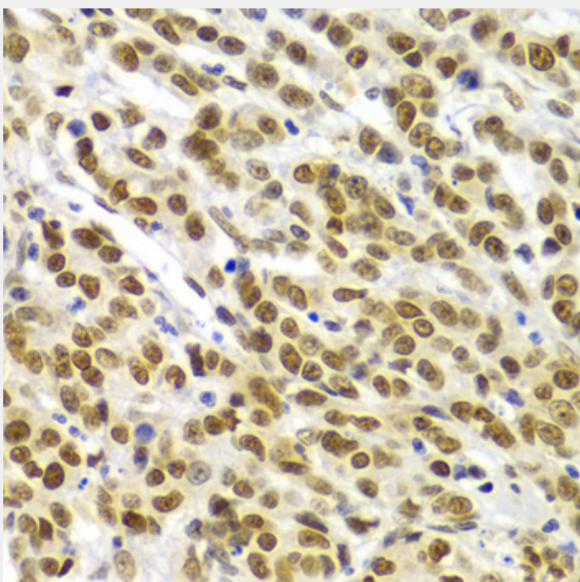
Immunohistochemistry of paraffin-embedded mouse kidney using SMARCE1 Antibody at dilution of 1:200 (40x lens).



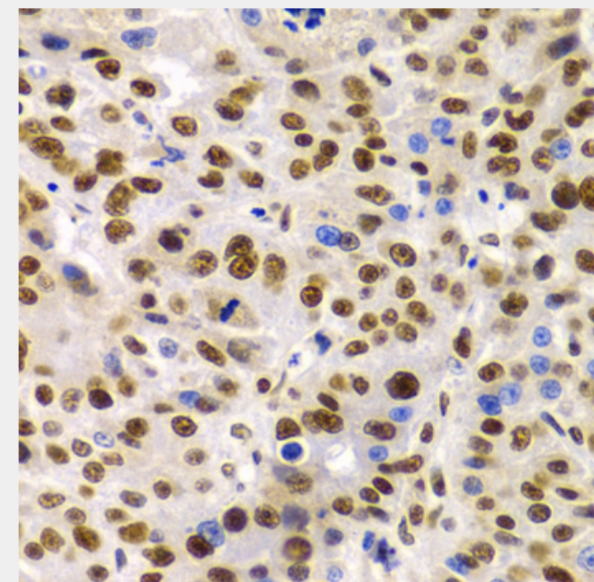
Immunohistochemistry of paraffin-embedded human colon using SMARCE1 Antibody at dilution of 1:100 (40x lens).



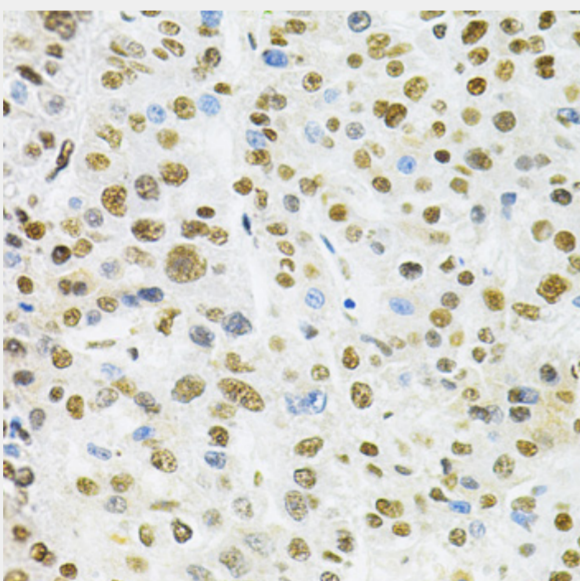
Immunohistochemistry of paraffin-embedded human esophageal cancer using SMARCE1 Antibody at dilution of 1:100 (40x lens).



Immunohistochemistry of paraffin-embedded human gastric cancer using SMARCE1 Antibody at dilution of 1:100 (40x lens).



Immunohistochemistry of paraffin-embedded human liver cancer using SMARCE1 Antibody at dilution of 1:100 (40x lens).



Immunohistochemistry of paraffin-embedded human liver cancer using SMARCE1 Antibody at dilution of 1:200 (40x lens).

All products are for RESEARCH USE ONLY. Not for diagnostic & therapeutic purposes!