

Anti GLRX Antibody

Catalog No: tcsa18883



Available Sizes

Size: 100µl



Specifications

Application:

WB, IHC, IF

Species Reactivity:

Human, Mouse, Rat

Host Species:

Rabbit

Immunogen / Amino acids:

Recombinant protein of human GLRX

Conjugation:

Unconjugated

Clonality:

Polyclonal

Isotype:

IgG

Form:

Liquid

Storage Buffer:

PBS with 0.02% sodium azide, 50% glycerol, pH7.3.

Recommended Dilution:

WB 1:500 - 1:2000

IHC 1:50 - 1:200

IF 1:50 - 1:200

Storage Instruction:

Store at -20C. Avoid freeze / thaw cycles.

Alternative Names:

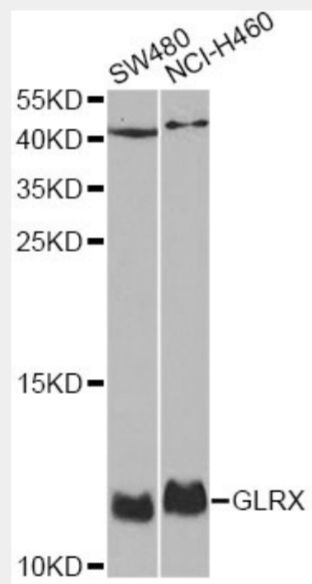
GLRX antibody; Glutaredoxin-1 antibody; Thioltransferase-1 antibody; TTase-1 antibody; GLRX antibody; GRX antibody

SwissProt:

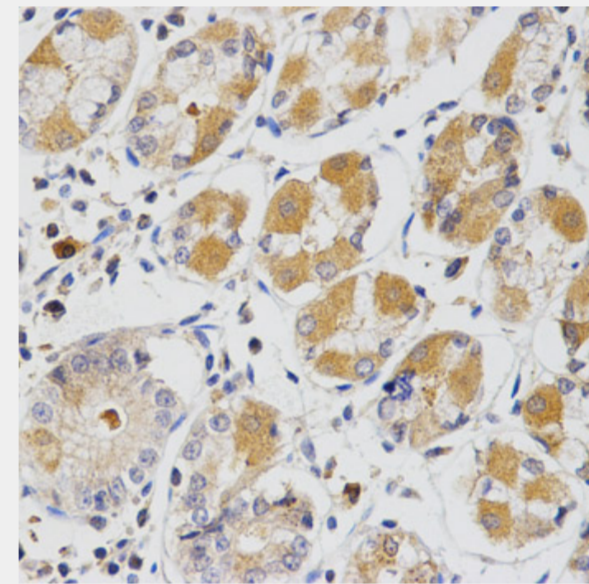
P35754

Product Description

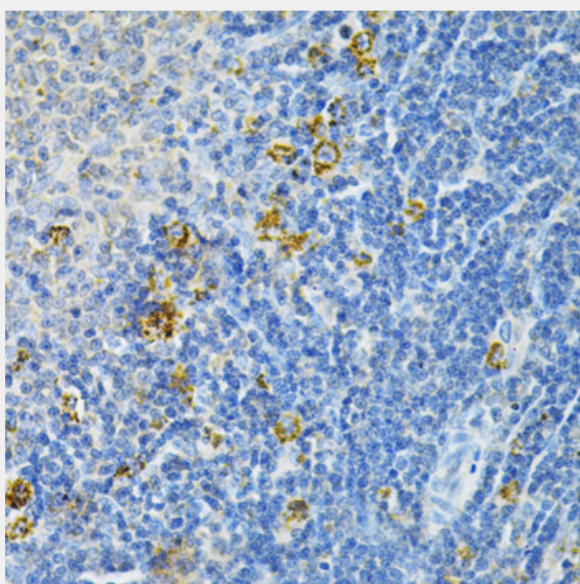
This gene encodes a member of the glutaredoxin family. The encoded protein is a cytoplasmic enzyme catalyzing the reversible reduction of glutathione-protein mixed disulfides. This enzyme highly contributes to the antioxidant defense system. It is crucial for several signalling pathways by controlling the S-glutathionylation status of signalling mediators. It is involved in beta-amyloid toxicity and Alzheimer's disease. Multiple alternatively spliced transcript variants encoding the same protein have been identified.



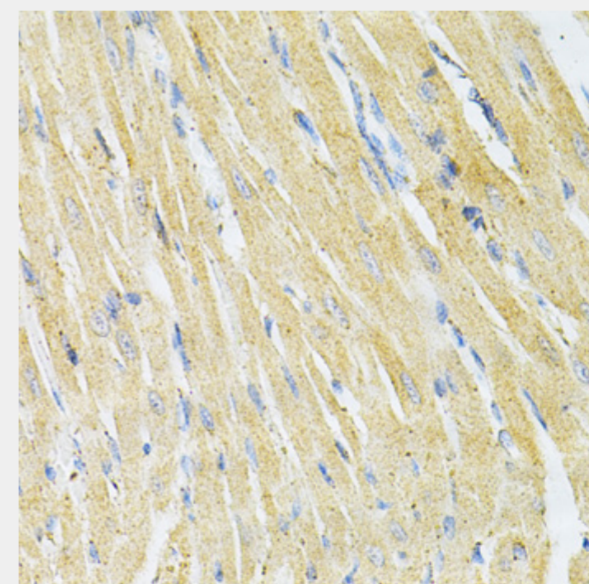
Western blot analysis of extracts of various cell lines, using GLRX antibody at 1:1000 dilution. Secondary antibody: HRP Goat Anti-Rabbit IgG (H+L) at 1:10000 dilution. Lysates/proteins: 25ug per lane. Blocking buffer: 3% nonfat dry milk in TBST.



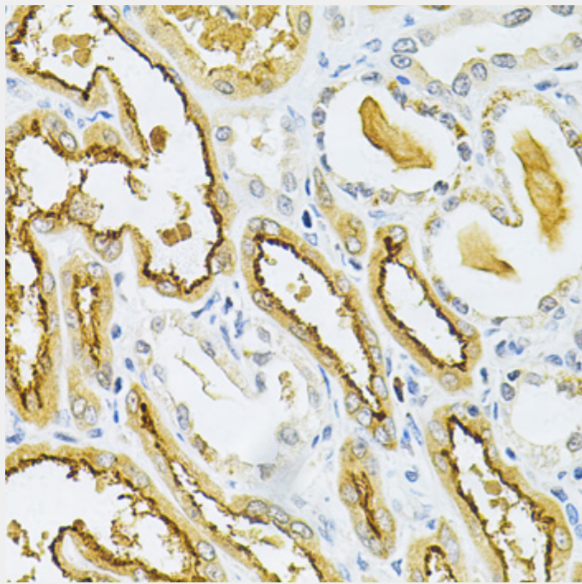
Immunohistochemistry of paraffin-embedded human stomach using GLRX Antibody at dilution of 1:200 (40x lens).



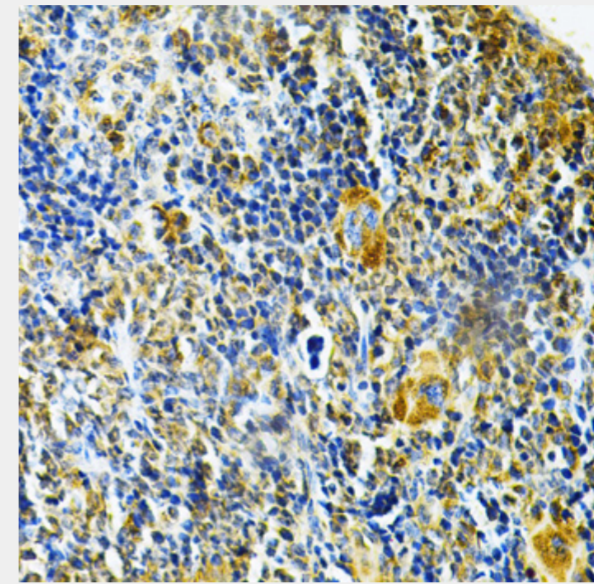
Immunohistochemistry of paraffin-embedded rat spleen using GLRX Antibody at dilution of 1:200 (40x lens).



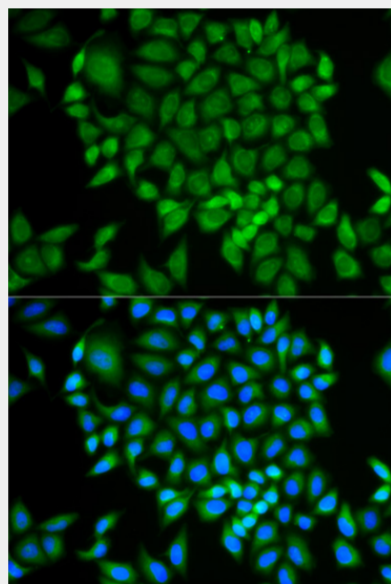
Immunohistochemistry of paraffin-embedded rat heart using GLRX Antibody at dilution of 1:200 (40x lens).



Immunohistochemistry of paraffin-embedded human kidney cancer using GLRX Antibody at dilution of 1:200 (40x lens).



Immunohistochemistry of paraffin-embedded mouse spleen using GLRX Antibody at dilution of 1:200 (40x lens).



Immunofluorescence analysis of MCF-7 cells using GLRX antibody. Blue: DAPI for nuclear staining.

All products are for RESEARCH USE ONLY. Not for diagnostic & therapeutic purposes!