

Anti NONO Antibody

Catalog No: tcsa18856



Available Sizes

Size: 100μl



Specifications

Application:

WB, IHC, IF

Species Reactivity:

Human, Mouse, Rat

Host Species:

Rabbit

Immunogen / Amino acids:

Recombinant protein of human Nono

Conjugation:

Unconjugated

Clonality:

Polyclonal

Isotype:

IgG

Form:

Liquid

Storage Buffer:

PBS with 0.02% sodium azide, 50% glycerol, pH7.3.

Recommended Dilution:

WB 1:500 - 1:2000

IHC 1:50 - 1:200

IF 1:50 - 1:200

Storage Instruction:

Store at -20C. Avoid freeze / thaw cycles.

Alternative Names:

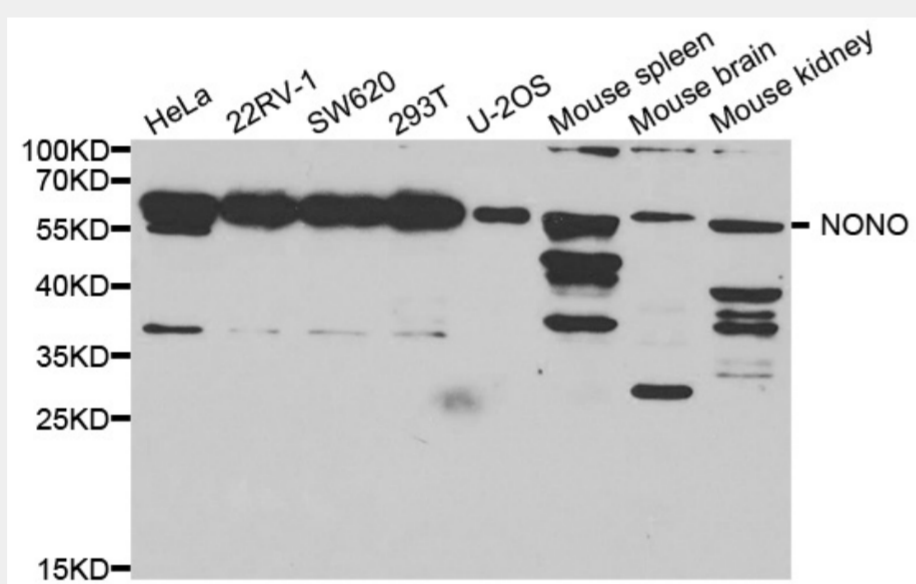
NONO antibody; Non-POU domain-containing octamer-binding protein antibody; NonO protein antibody; 54 kDa nuclear RNA- and DNA-binding protein antibody; 55 kDa nuclear protein antibody; DNA-binding p52/p100 complex antibody; 52 kDa subunit

SwissProt:

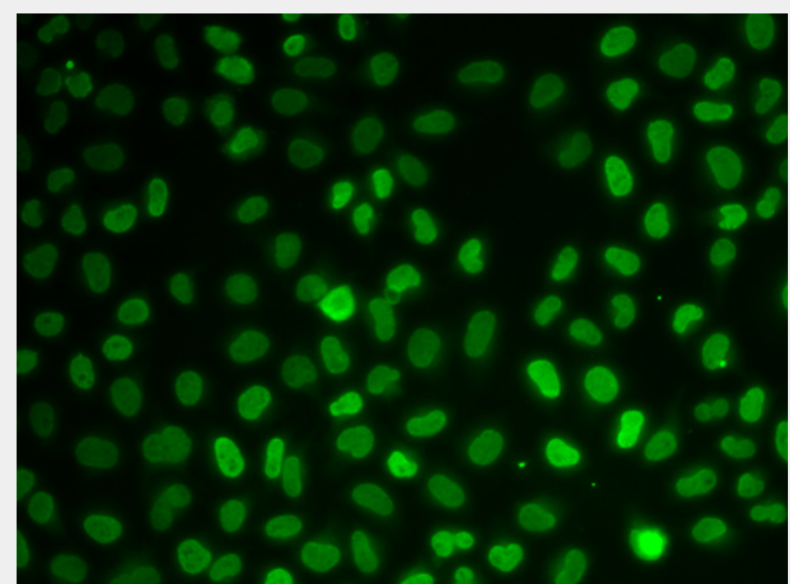
Q15233

Product Description

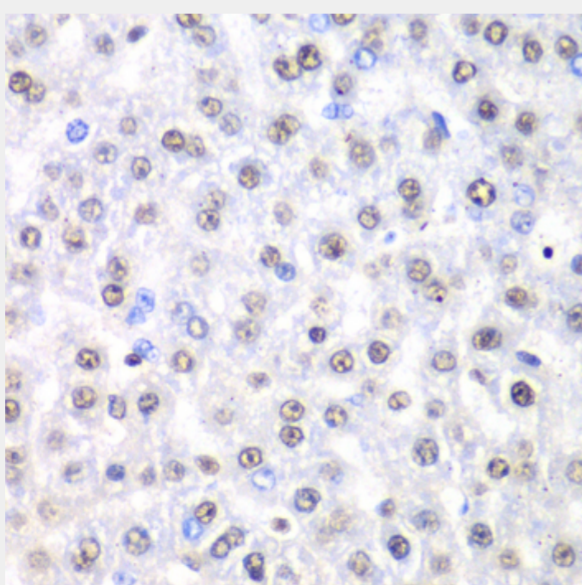
This gene encodes an RNA-binding protein which plays various roles in the nucleus, including transcriptional regulation and RNA splicing. A rearrangement between this gene and the transcription factor E3 gene has been observed in papillary renal cell carcinoma. Alternatively spliced transcript variants have been described. Pseudogenes exist on Chromosomes 2 and 16.



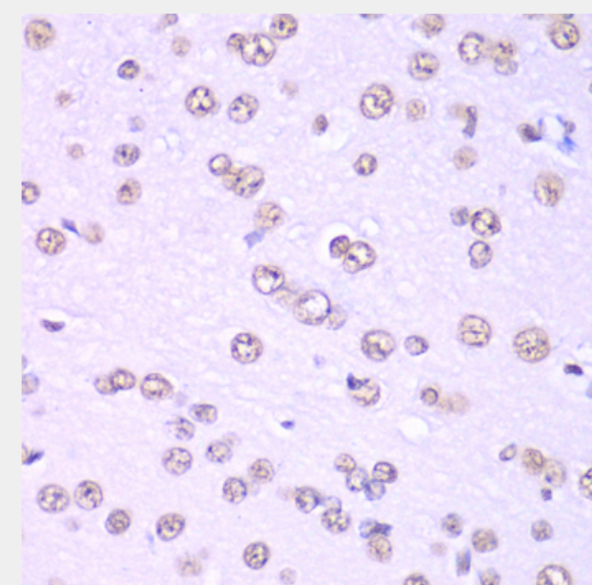
Western blot analysis of extracts of various cell lines, using Nono antibody at 1:1000 dilution. Secondary antibody: HRP Goat Anti-Rabbit IgG (H+L) at 1:10000 dilution. Lysates/proteins: 25ug per lane. Blocking buffer: 3% nonfat dry milk in TBST. Detection: ECL Basic Kit. Exposure time: 10s.



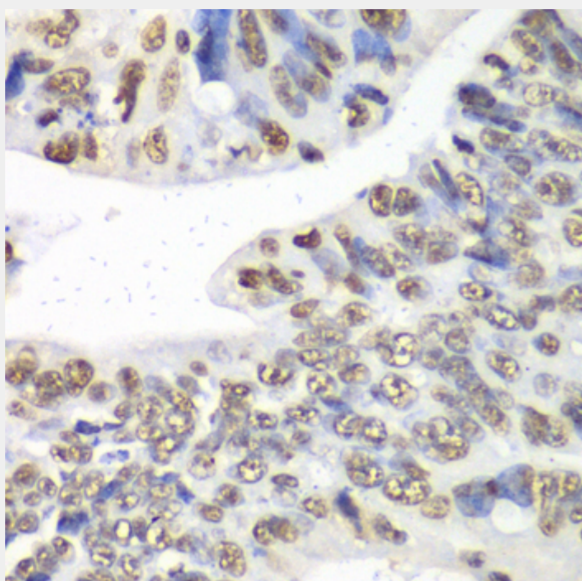
Immunofluorescence analysis of U2OS cells using Nono antibody.



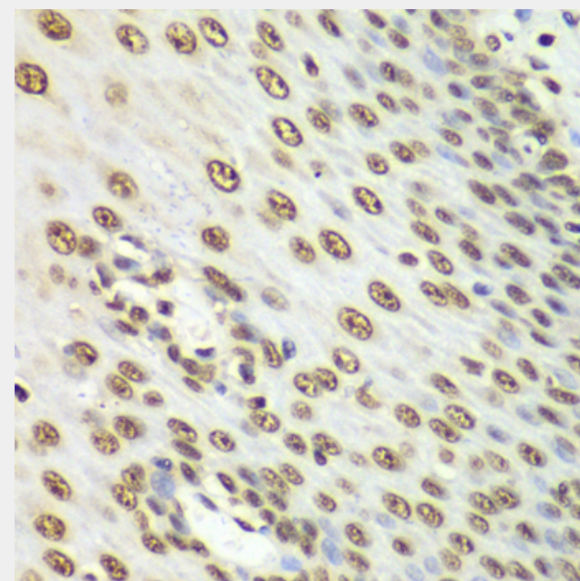
Immunohistochemistry of paraffin-embedded rat liver using Nono Antibody at dilution of 1:100 (40x lens).



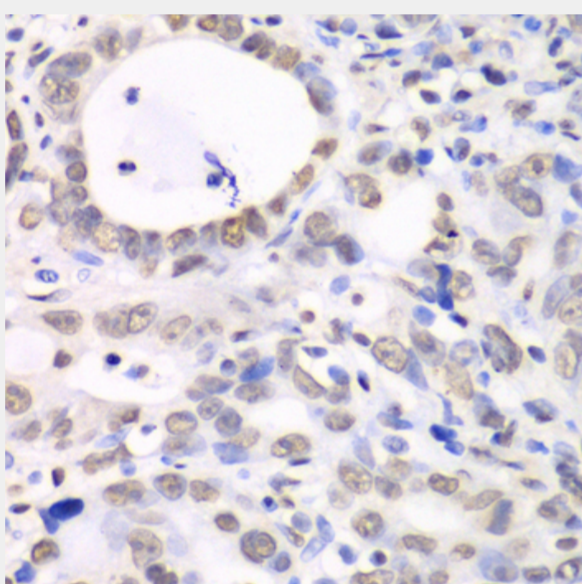
Immunohistochemistry of paraffin-embedded rat brain using Nono Antibody at dilution of 1:100 (40x lens).



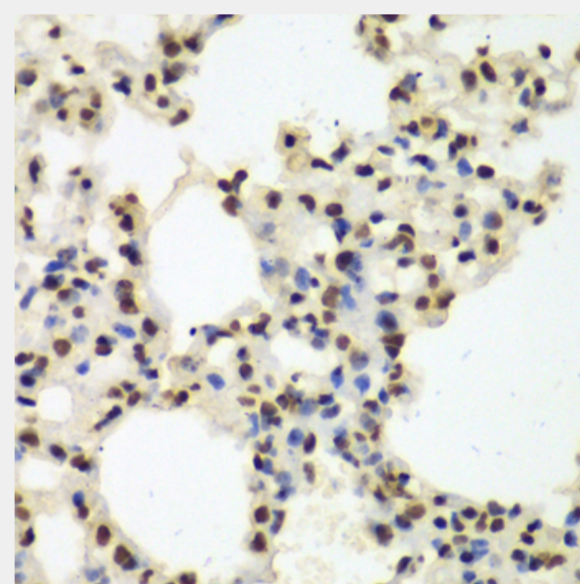
Immunohistochemistry of paraffin-embedded human colon using Nono Antibody at dilution of 1:100 (40x lens).



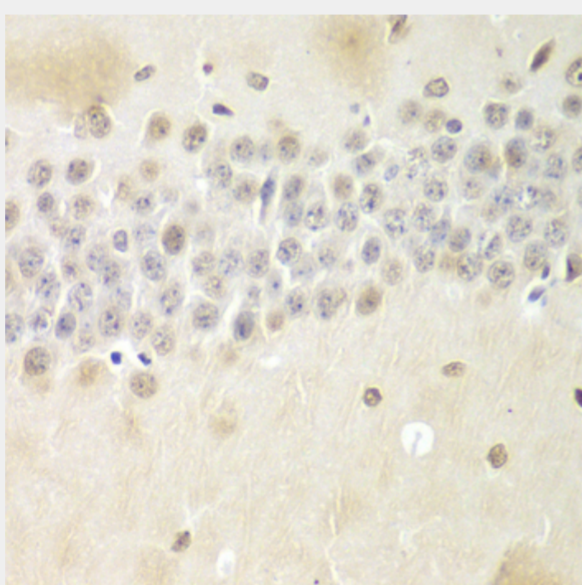
Immunohistochemistry of paraffin-embedded human esophagus using Nono Antibody at dilution of 1:100 (40x lens).



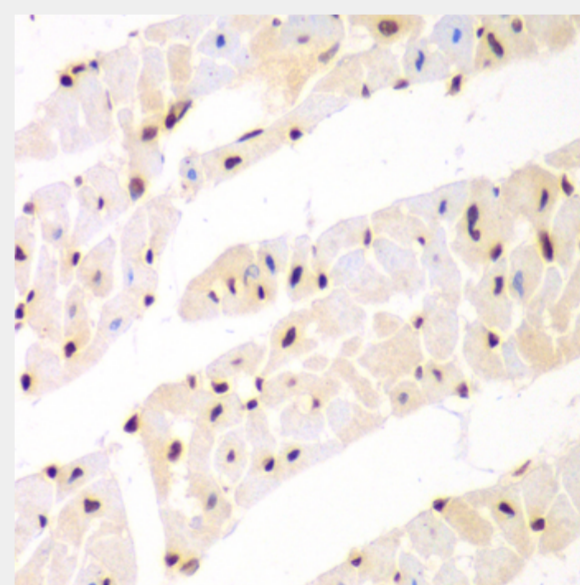
Immunohistochemistry of paraffin-embedded human gastric cancer using Nono Antibody at dilution of 1:100 (40x lens).



Immunohistochemistry of paraffin-embedded mouse lung using Nono Antibody at dilution of 1:100 (40x lens).



Immunohistochemistry of paraffin-embedded mouse brain using Nono Antibody at dilution of 1:100 (40x lens).



Immunohistochemistry of paraffin-embedded mouse heart using Nono Antibody at dilution of 1:100 (40x lens).

All products are for RESEARCH USE ONLY. Not for diagnostic & therapeutic purposes!