

# Anti POP4 Antibody

Catalog No: tcsa18636



## Available Sizes

---

**Size:** 100µl

---



## Specifications

---

**Application:**

WB, IHC

---

**Species Reactivity:**

Human, Mouse, Rat

---

**Host Species:**

Rabbit

---

**Immunogen / Amino acids:**

Recombinant protein of human POP4

---

**Conjugation:**

Unconjugated

---

**Clonality:**

Polyclonal

---

**Isotype:**

IgG

---

**Form:**

Liquid

---

**Storage Buffer:**

PBS with 0.02% sodium azide, 50% glycerol, pH7.3.

---

**Recommended Dilution:**

WB 1:200 - 1:2000

IHC 1:50 - 1:200

---

**Storage Instruction:**

Store at -20C. Avoid freeze / thaw cycles.

**Alternative Names:**

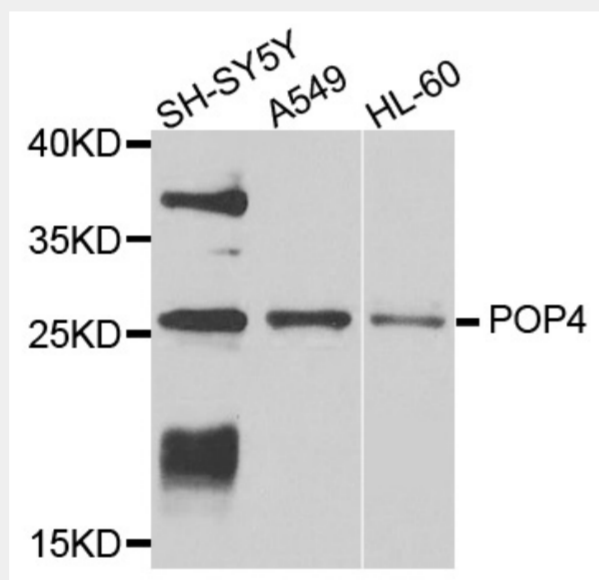
POP4 antibody; Ribonuclease P protein subunit p29 antibody; hPOP4 antibody; POP4 antibody; RPP29 antibody

**SwissProt:**

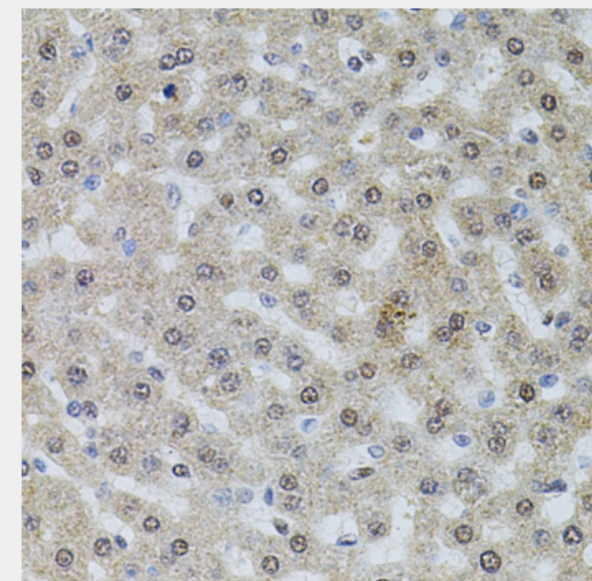
O95707

**Product Description**

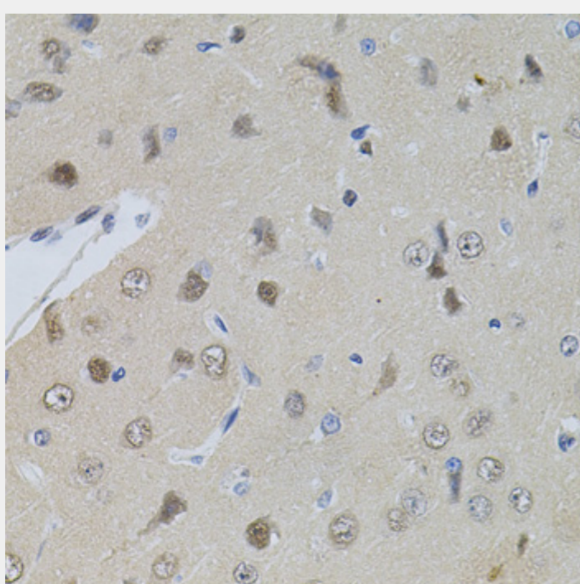
This gene encodes one of the protein subunits of the small nucleolar ribonucleoprotein complexes: the endoribonuclease for mitochondrial RNA processing complex and the ribonuclease P complex. The encoded protein is localized to the nucleus and associates directly with the RNA component of these complexes. This protein is involved in processing of precursor RNAs. Alternative splicing results in multiple transcript variants.



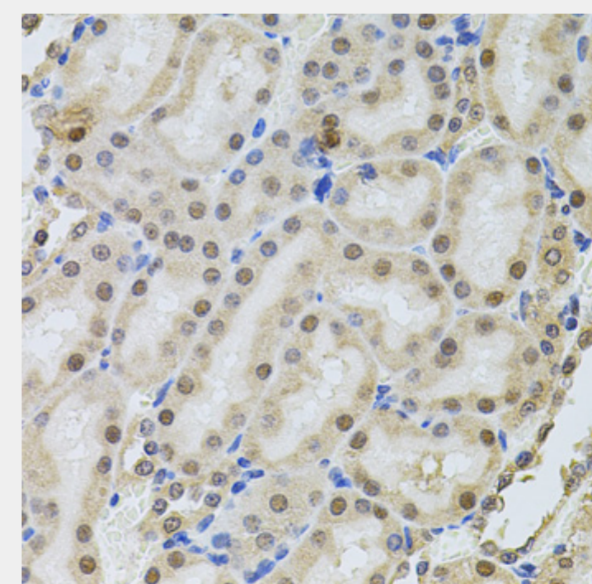
Western blot analysis of extracts of various cell lines, using POP4 antibody at 1:1000 dilution. Secondary antibody: HRP Goat Anti-Rabbit IgG (H+L) at 1:10000 dilution. Lysates/proteins: 25ug per lane. Blocking buffer: 3% nonfat dry milk in TBST. Detection: ECL Basic Kit. Exposure time: 90s.



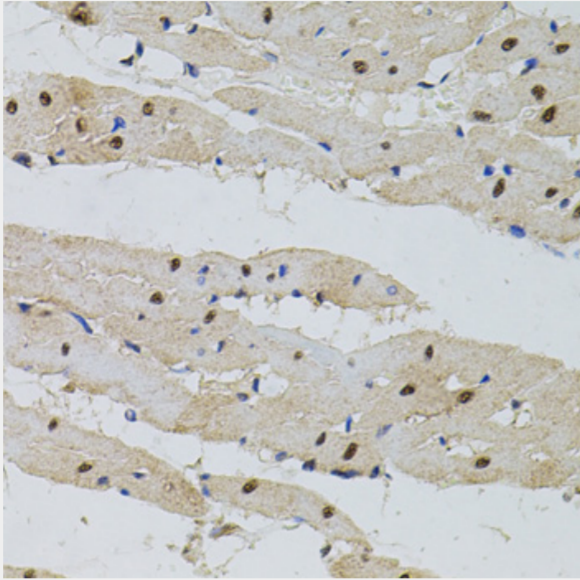
Immunohistochemistry of paraffin-embedded rat liver using POP4 antibody at dilution of 1:100 (40x lens).



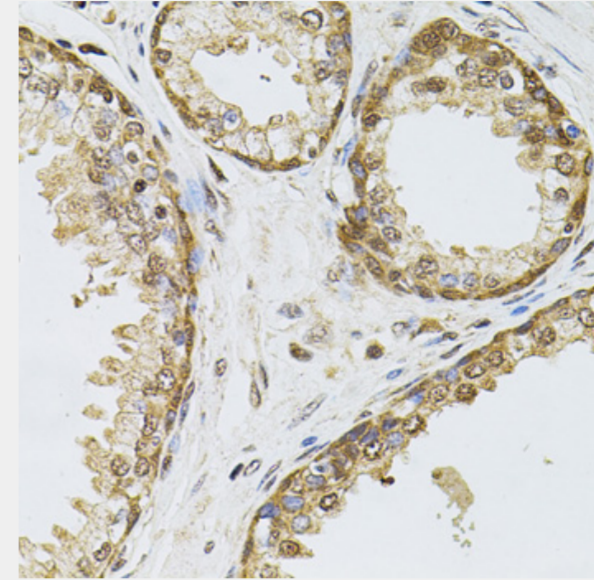
Immunohistochemistry of paraffin-embedded rat brain using POP4 antibody at dilution of 1:100 (40x lens).



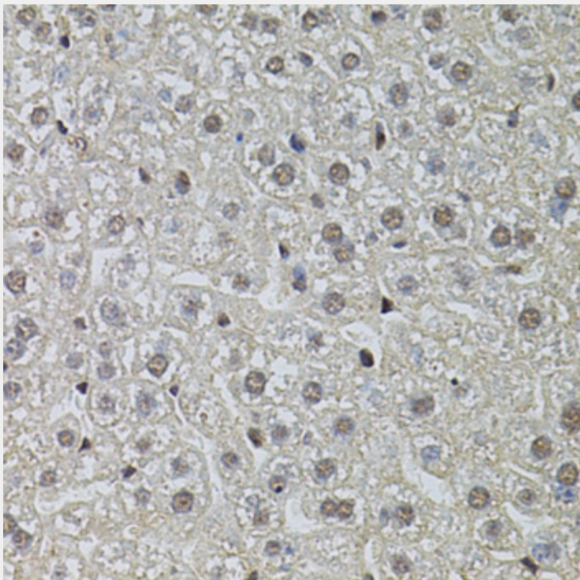
Immunohistochemistry of paraffin-embedded rat kidney using POP4 antibody at dilution of 1:100 (40x lens).



Immunohistochemistry of paraffin-embedded rat heart using POP4 antibody at dilution of 1:100 (40x lens).



Immunohistochemistry of paraffin-embedded human prostate using POP4 antibody at dilution of 1:100 (40x lens).



Immunohistochemistry of paraffin-embedded mouse liver using POP4 antibody at dilution of 1:100 (40x lens).

All products are for RESEARCH USE ONLY. Not for diagnostic & therapeutic purposes!