

Anti XRCC4 Antibody

Catalog No: tcsa18407



Available Sizes

Size: 100µl



Specifications

Application:

WB, IHC, IF

Species Reactivity:

Human, Mouse, Rat

Host Species:

Rabbit

Immunogen / Amino acids:

Recombinant protein of human XRCC4

Conjugation:

Unconjugated

Clonality:

Polyclonal

Isotype:

IgG

Form:

Liquid

Storage Buffer:

PBS with 0.02% sodium azide, 50% glycerol, pH7.3.

Recommended Dilution:

WB 1:500 - 1:2000

IHC 1:50 - 1:200

IF 1:10 - 1:100

Storage Instruction:

Store at -20C. Avoid freeze / thaw cycles.

Alternative Names:

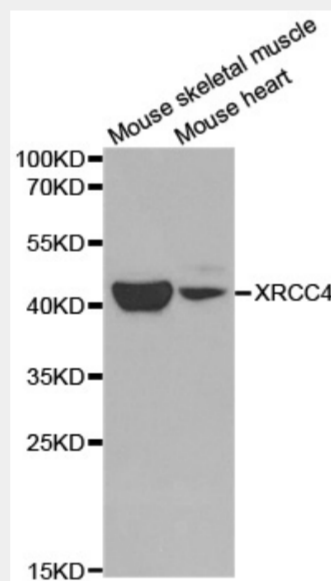
XRCC4 antibody; DNA repair protein XRCC4 antibody; X-ray repair cross-complementing protein 4 antibody; XRCC4 antibody

SwissProt:

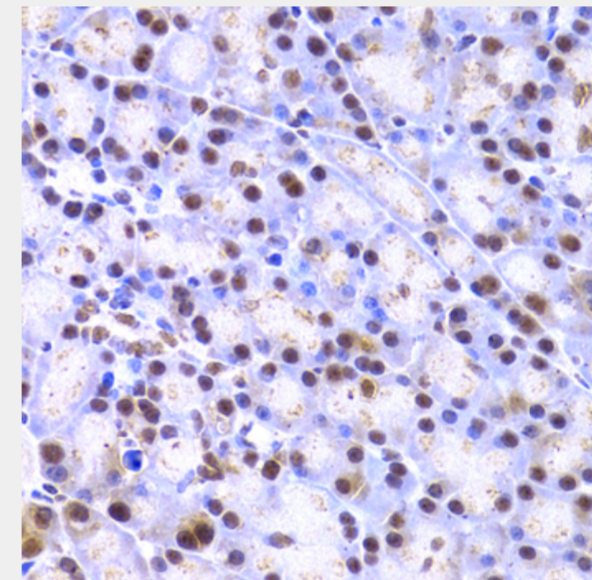
Q13426

Product Description

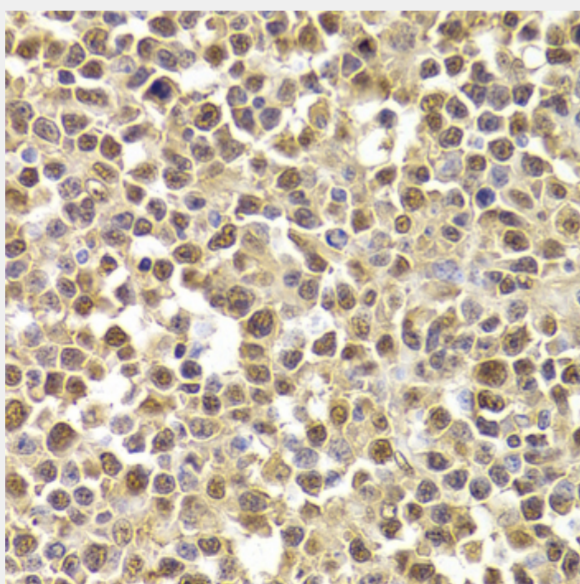
The protein encoded by this gene functions together with DNA ligase IV and the DNA-dependent protein kinase in the repair of DNA double-strand breaks. This protein plays a role in both non-homologous end joining and the completion of V(D)J recombination. Mutations in this gene can cause short stature, microcephaly, and endocrine dysfunction (SSMED). Alternative splicing generates several transcript variants.



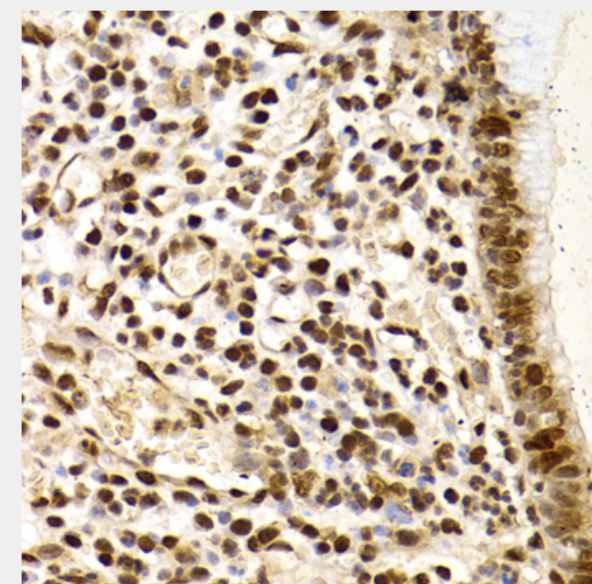
Western blot analysis of extracts of various cell lines, using XRCC4 antibody at 1:1000 dilution. Secondary antibody: HRP Goat Anti-Rabbit IgG (H+L) at 1:10000 dilution. Lysates/proteins: 25ug per lane. Blocking buffer: 3% nonfat dry milk in TBST.



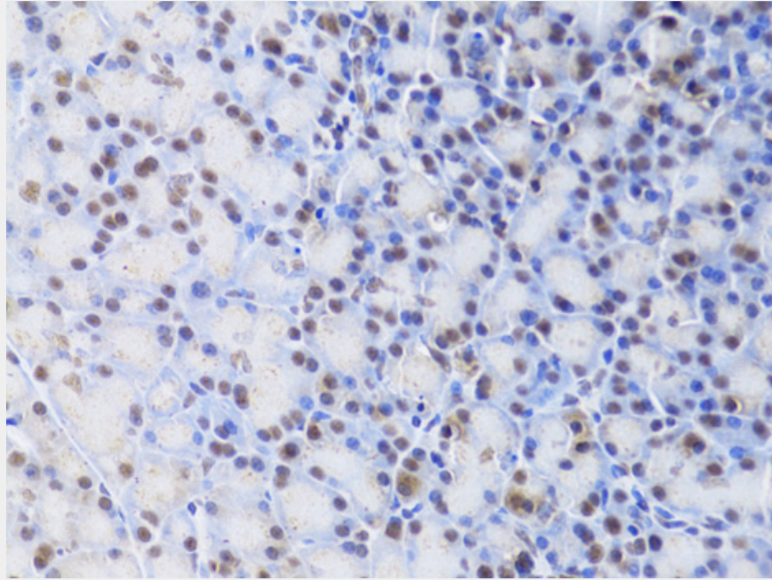
Immunohistochemistry of paraffin-embedded rat pancreas using XRCC4 Antibody at dilution of 1:200 (40x lens).



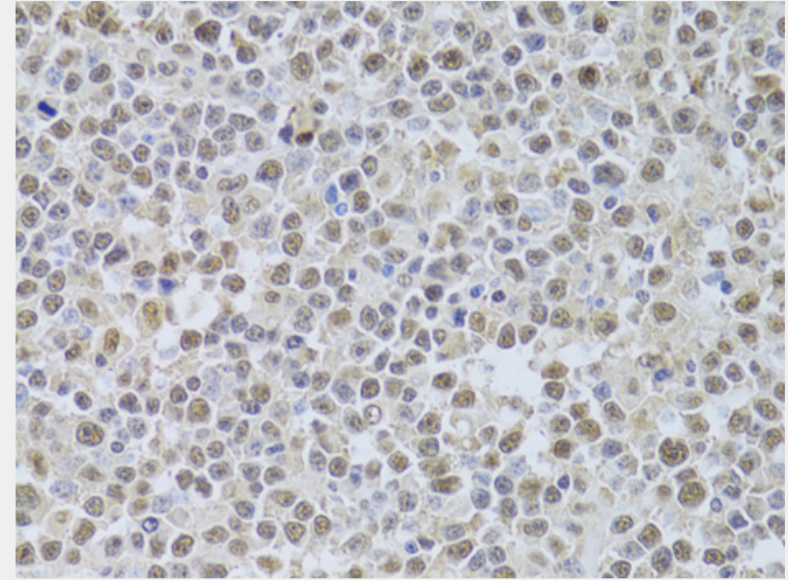
Immunohistochemistry of paraffin-embedded human B cell lymphoma using XRCC4 Antibody at dilution of 1:200 (40x lens).



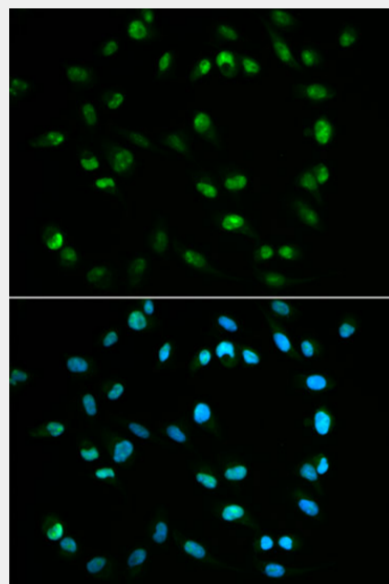
Immunohistochemistry of paraffin-embedded human gastric cancer using XRCC4 Antibody at dilution of 1:200 (40x lens).



Immunohistochemistry of paraffin-embedded rat pancreas using XRCC4 Antibody at dilution of 1:100 (40x lens).



Immunohistochemistry of paraffin-embedded human B cell lymphoma using XRCC4 Antibody at dilution of 1:100 (40x lens).



Immunofluorescence analysis of U2OS cells using XRCC4 antibody at dilution of 1:100. Blue: DAPI for nuclear staining.

All products are for RESEARCH USE ONLY. Not for diagnostic & therapeutic purposes!