

Anti TOLLIP Antibody

Catalog No: tcsa18268



Available Sizes

Size: 100µl



Specifications

Application:

WB, IHC, IF

Species Reactivity:

Human, Mouse, Rat

Host Species:

Rabbit

Immunogen / Amino acids:

Recombinant protein of human TOLLIP

Conjugation:

Unconjugated

Clonality:

Polyclonal

Isotype:

IgG

Form:

Liquid

Storage Buffer:

PBS with 0.02% sodium azide, 50% glycerol, pH7.3.

Recommended Dilution:

WB 1:500 - 1:2000

IHC 1:50 - 1:200

IF 1:50 - 1:200

Storage Instruction:

Store at -20C. Avoid freeze / thaw cycles.

Alternative Names:

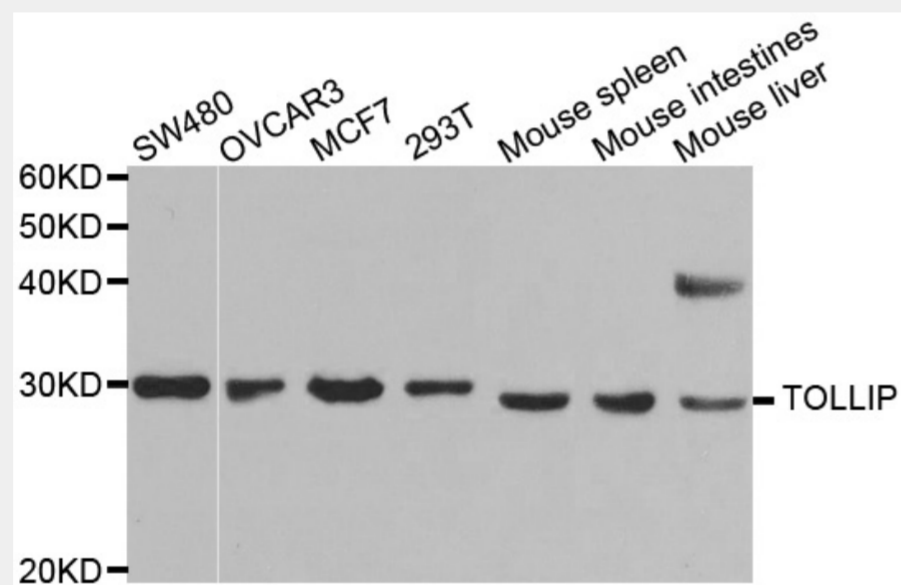
TOLLIP antibody; Toll-interacting protein antibody; TOLLIP antibody

SwissProt:

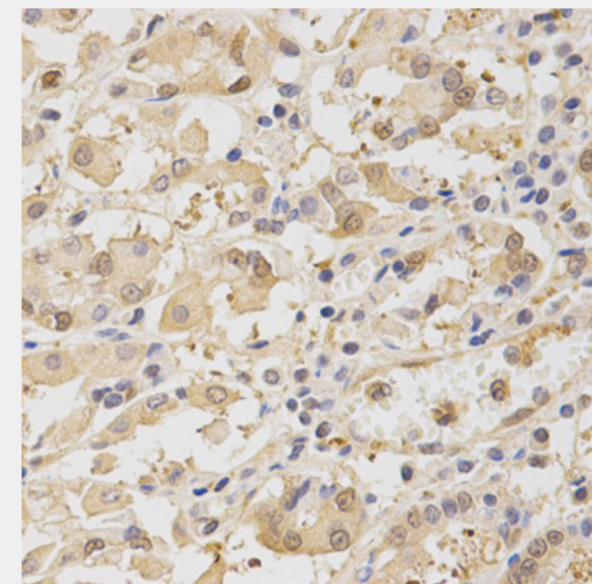
Q9H0E2

Product Description

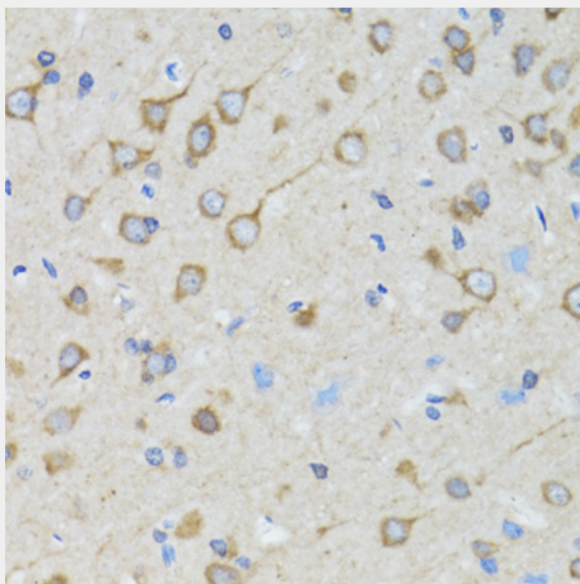
This gene encodes a ubiquitin-binding protein that interacts with several Toll-like receptor (TLR) signaling cascade components. The encoded protein regulates inflammatory signaling and is involved in interleukin-1 receptor trafficking and in the turnover of IL1R-associated kinase. Several transcript variants encoding different isoforms have been found for this gene.



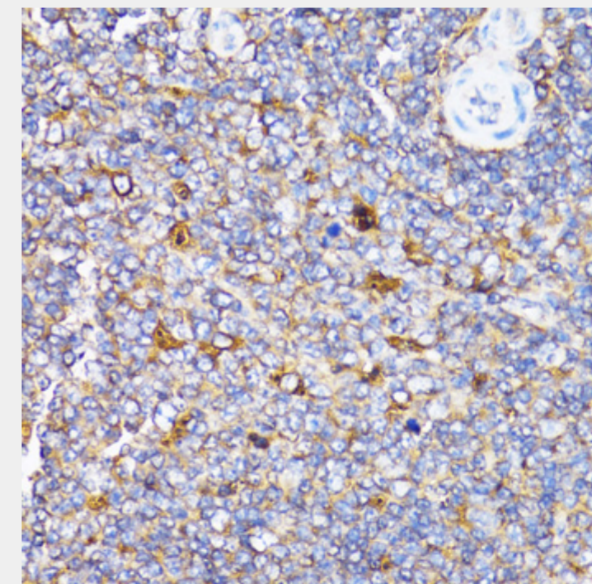
Western blot analysis of extracts of various cell lines, using TOLLIP antibody at 1:1000 dilution. Secondary antibody: HRP Goat Anti-Rabbit IgG (H+L) at 1:10000 dilution. Lysates/proteins: 25ug per lane. Blocking buffer: 3% nonfat dry milk in TBST.



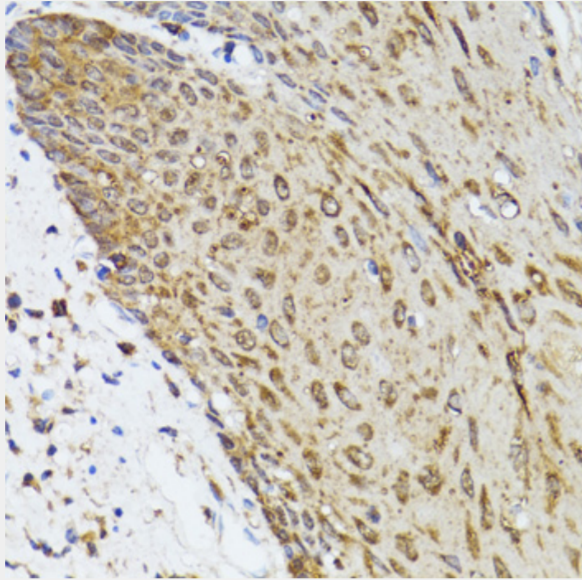
Immunohistochemistry of paraffin-embedded human stomach using TOLLIP antibody at dilution of 1:200 (40x lens).



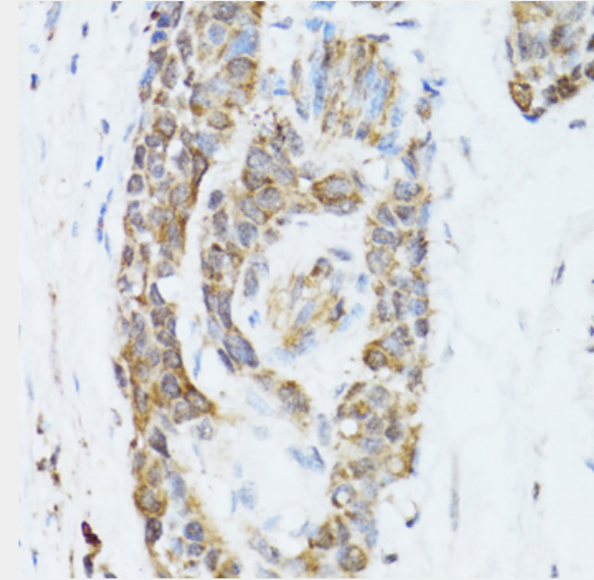
Immunohistochemistry of paraffin-embedded rat brain using TOLLIP antibody at dilution of 1:100 (40x lens).



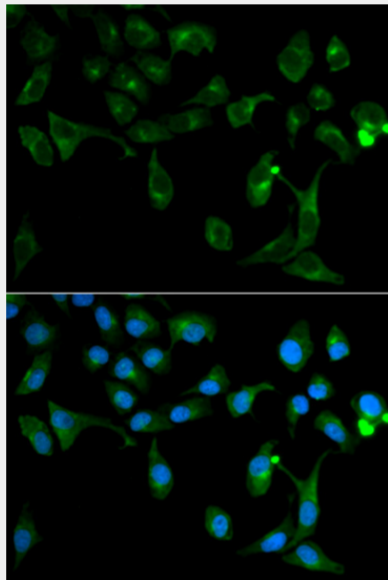
Immunohistochemistry of paraffin-embedded rat spleen using TOLLIP antibody at dilution of 1:100 (40x lens).



Immunohistochemistry of paraffin-embedded human esophagus using TOLLIP antibody at dilution of 1:100 (40x lens).



Immunohistochemistry of paraffin-embedded human esophageal cancer using TOLLIP antibody at dilution of 1:100 (40x lens).



Immunofluorescence analysis of U2OS cells using TOLLIP antibody. Blue: DAPI for nuclear staining.

All products are for RESEARCH USE ONLY. Not for diagnostic & therapeutic purposes!