

Anti TFF1 Antibody

Catalog No: tcsa18210



Available Sizes

Size: 100µl



Specifications

Application:

WB, IHC

Species Reactivity:

Human, Mouse, Rat

Host Species:

Rabbit

Immunogen / Amino acids:

Recombinant protein of human TFF1

Conjugation:

Unconjugated

Clonality:

Polyclonal

Isotype:

IgG

Form:

Liquid

Storage Buffer:

PBS with 0.02% sodium azide, 50% glycerol, pH7.3.

Recommended Dilution:

WB 1:500 - 1:1000

IHC 1:50 - 1:200

Storage Instruction:

Store at -20C. Avoid freeze / thaw cycles.

Alternative Names:

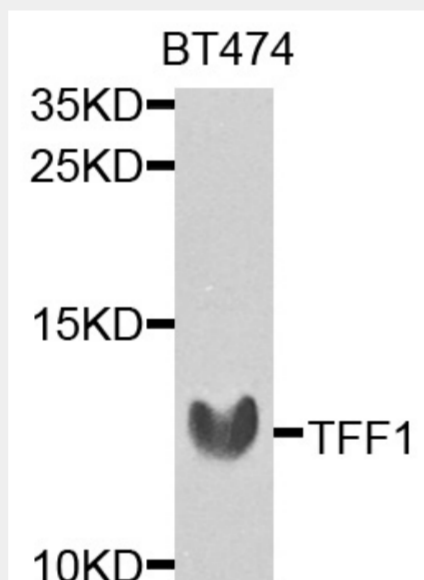
TFF1 antibody; Trefoil factor 1 antibody; Breast cancer estrogen-inducible protein antibody; PNR-2 antibody; Polypeptide P1.A antibody; hP1.A antibody; Protein pS2 antibody; TFF1 antibody; BCEI antibody; PS2 antibody

SwissProt:

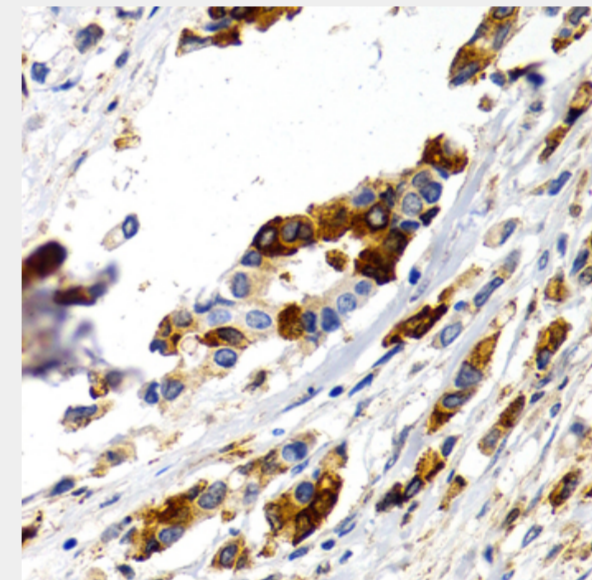
P04155

Product Description

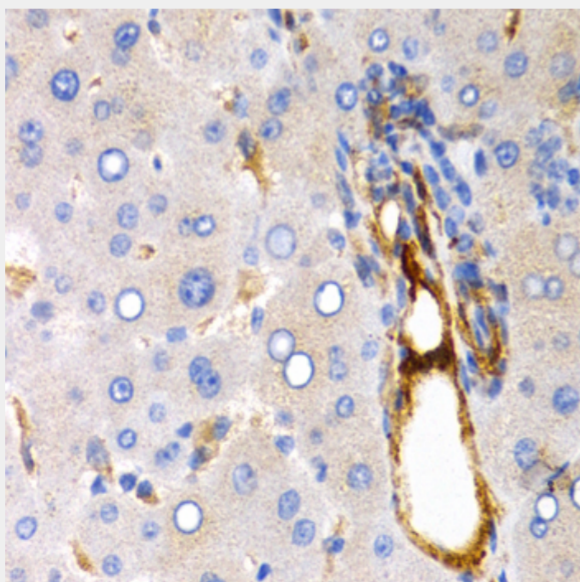
Members of the trefoil family are characterized by having at least one copy of the trefoil motif, a 40-amino acid domain that contains three conserved disulfides. They are stable secretory proteins expressed in gastrointestinal mucosa. Their functions are not defined, but they may protect the mucosa from insults, stabilize the mucus layer, and affect healing of the epithelium. This gene, which is expressed in the gastric mucosa, has also been studied because of its expression in human tumors. This gene and two other related trefoil family member genes are found in a cluster on chromosome 21.



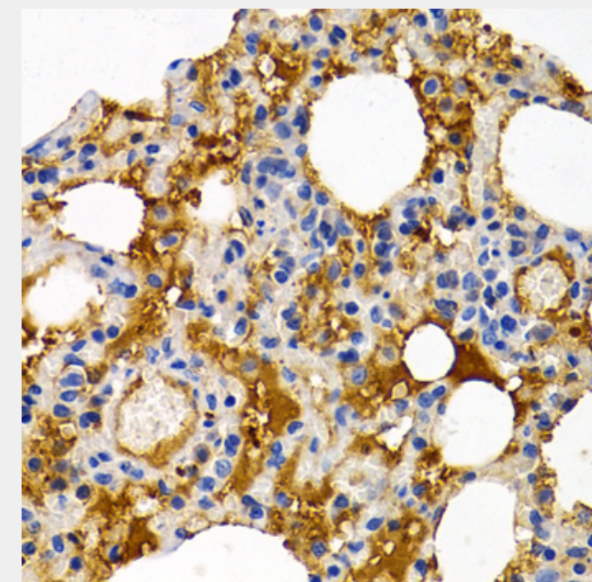
Western blot analysis of extracts of BT-474 cells, using TFF1 antibody at 1:1000 dilution. Secondary antibody: HRP Goat Anti-Rabbit IgG (H+L) at 1:10000 dilution. Lysates/proteins: 25ug per lane. Blocking buffer: 3% nonfat dry milk in TBST. Detection: ECL Enhanced Kit. Exposure time: 90s.



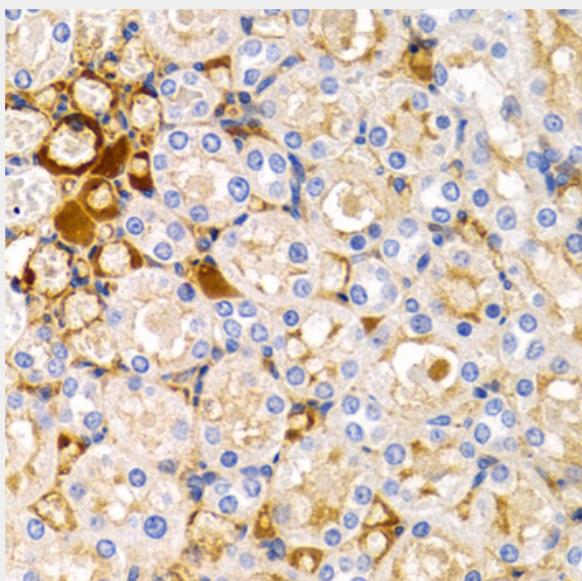
Immunohistochemistry of paraffin-embedded human mammary cancer using TFF1 antibody at dilution of 1:200 (40x lens).



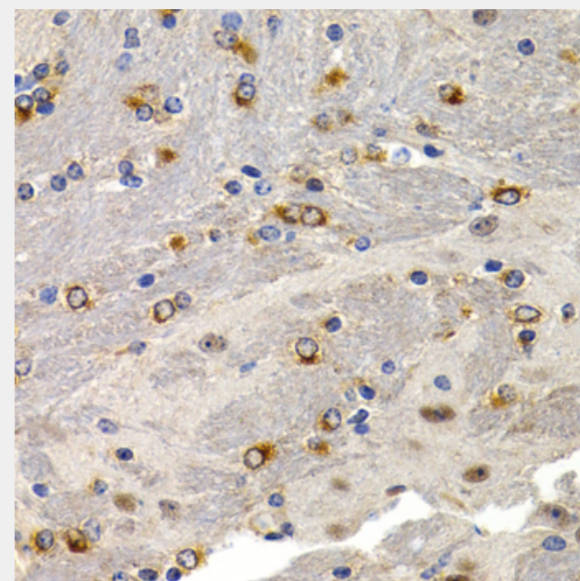
Immunohistochemistry of paraffin-embedded human liver cancer using TFF1 antibody at dilution of 1:200 (40x lens).



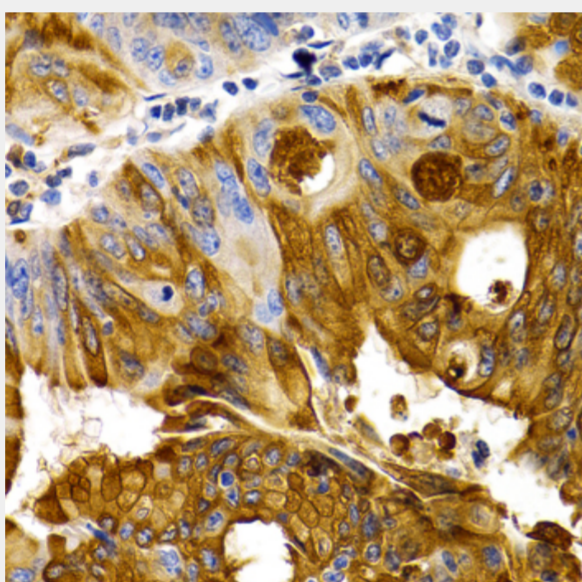
Immunohistochemistry of paraffin-embedded rat lung using TFF1 antibody at dilution of 1:200 (40x lens).



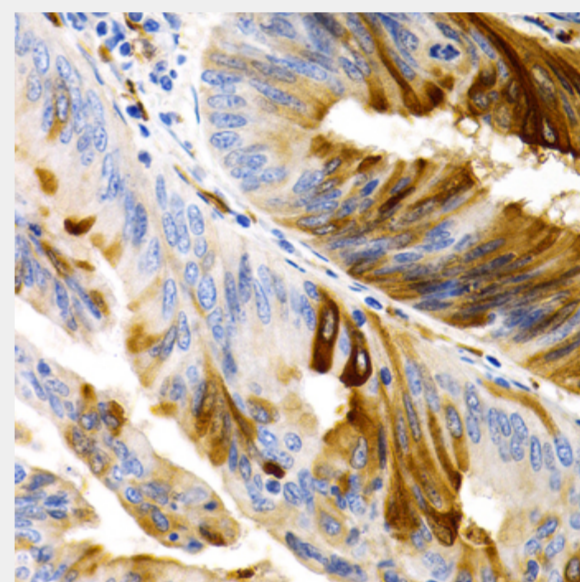
Immunohistochemistry of paraffin-embedded rat kidney using TFF1 antibody at dilution of 1:200 (40x lens).



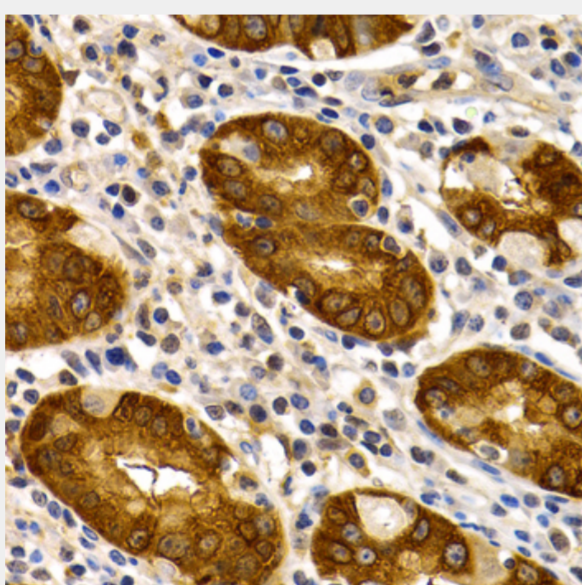
Immunohistochemistry of paraffin-embedded mouse brain using TFF1 antibody at dilution of 1:200 (40x lens).



Immunohistochemistry of paraffin-embedded human colon carcinoma using TFF1 antibody at dilution of 1:200 (40x lens).



Immunohistochemistry of paraffin-embedded human colon carcinoma using TFF1 antibody at dilution of 1:200 (40x lens).



Immunohistochemistry of paraffin-embedded human stomach using TFF1 antibody at dilution of 1:200 (40x lens).

All products are for RESEARCH USE ONLY. Not for diagnostic & therapeutic purposes!