

Anti SUMO1 Antibody

Catalog No: tcsa18166



Available Sizes

Size: 100µl



Specifications

Application:

WB, IHC, IF

Species Reactivity:

Human, Mouse, Rat

Host Species:

Rabbit

Immunogen / Amino acids:

Recombinant protein of human SUMO1

Conjugation:

Unconjugated

Clonality:

Polyclonal

Isotype:

IgG

Form:

Liquid

Storage Buffer:

PBS with 0.02% sodium azide, 50% glycerol, pH7.3.

Recommended Dilution:

WB 1:500 - 1:2000

IHC 1:50 - 1:100

IF 1:50 - 1:200

Storage Instruction:

Store at -20C. Avoid freeze / thaw cycles.

Alternative Names:

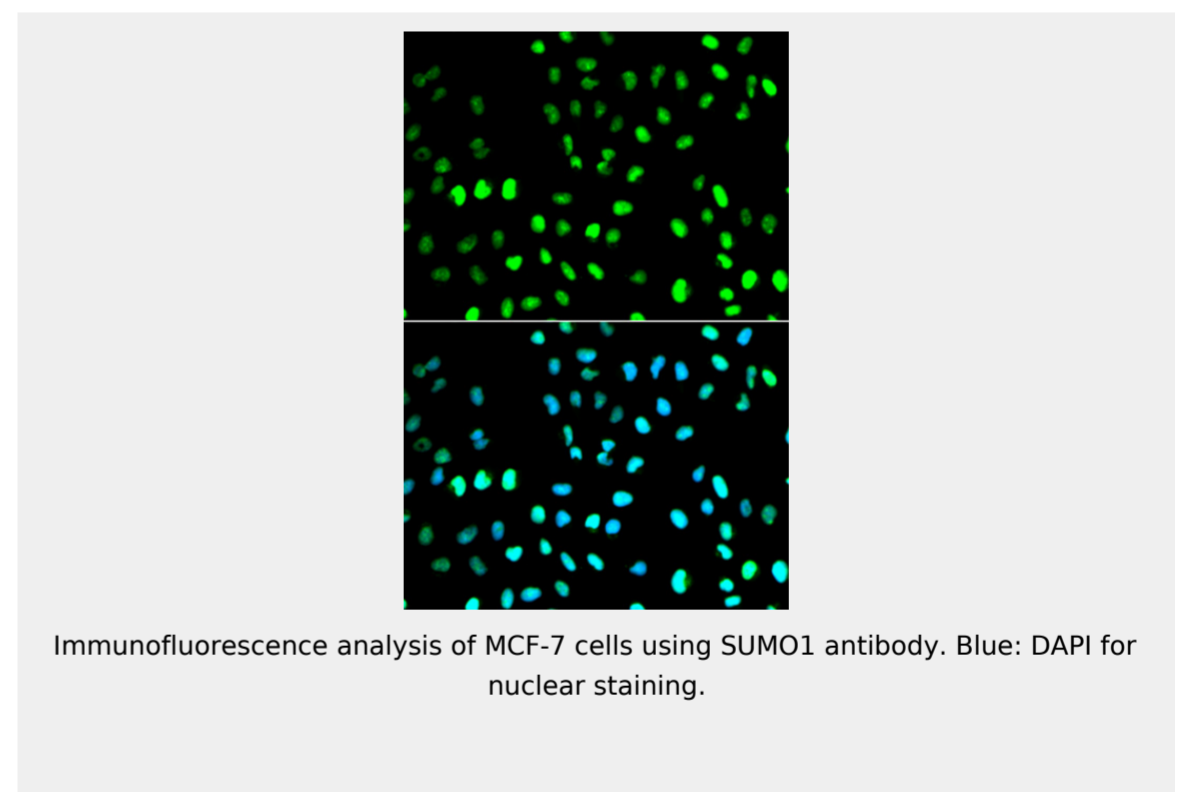
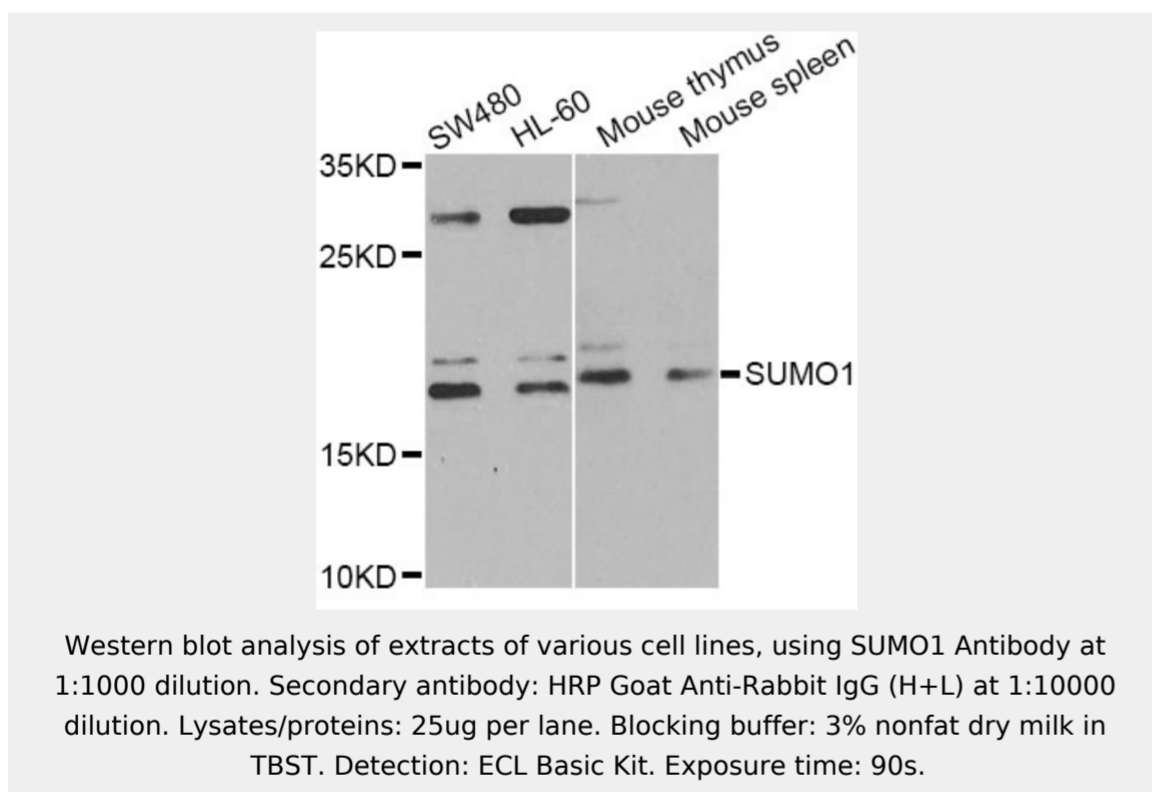
SUMO1 antibody; Small ubiquitin-related modifier 1 antibody; SUMO-1 antibody; GAP-modifying protein 1 antibody; GMP1 antibody; SMT3 homolog 3 antibody; Sentrin antibody; Ubiquitin-homology domain protein PIC1 antibody; Ubiquitin-li

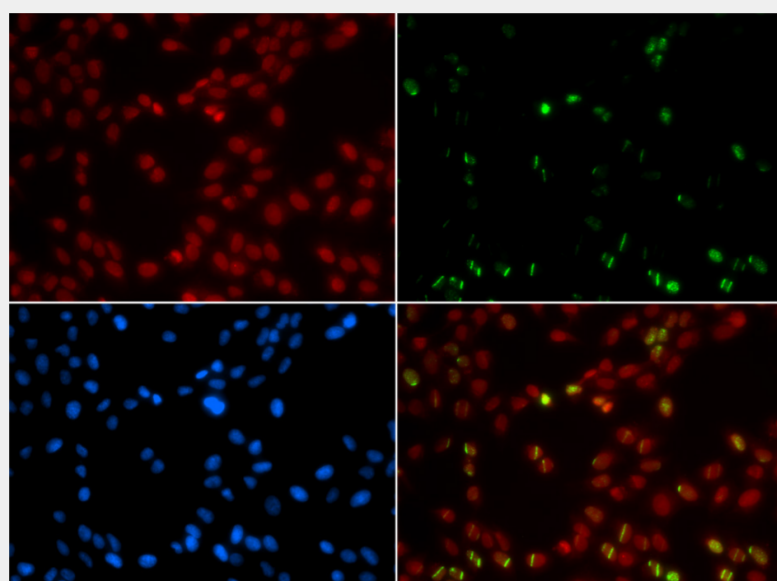
SwissProt:

P63165

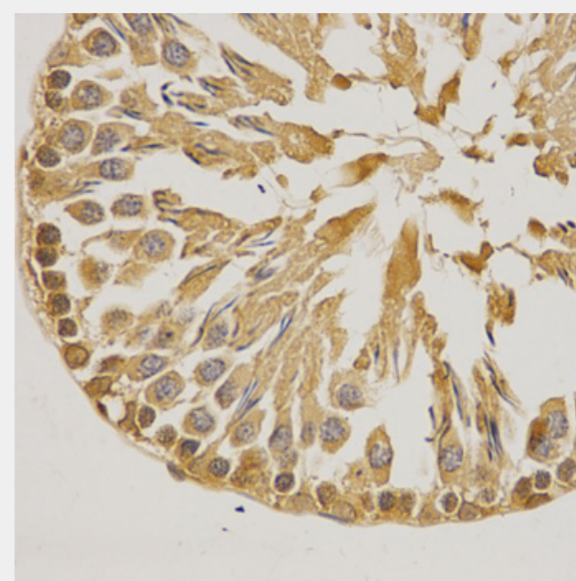
Product Description

This gene encodes a protein that is a member of the SUMO (small ubiquitin-like modifier) protein family. It functions in a manner similar to ubiquitin in that it is bound to target proteins as part of a post-translational modification system. However, unlike ubiquitin which targets proteins for degradation, this protein is involved in a variety of cellular processes, such as nuclear transport, transcriptional regulation, apoptosis, and protein stability. It is not active until the last four amino acids of the carboxy-terminus have been cleaved off. Several pseudogenes have been reported for this gene. Alternate transcriptional splice variants encoding different isoforms have been characterized.

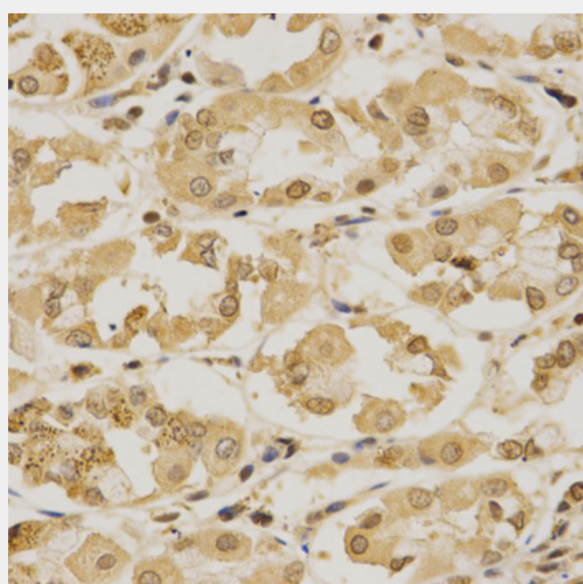




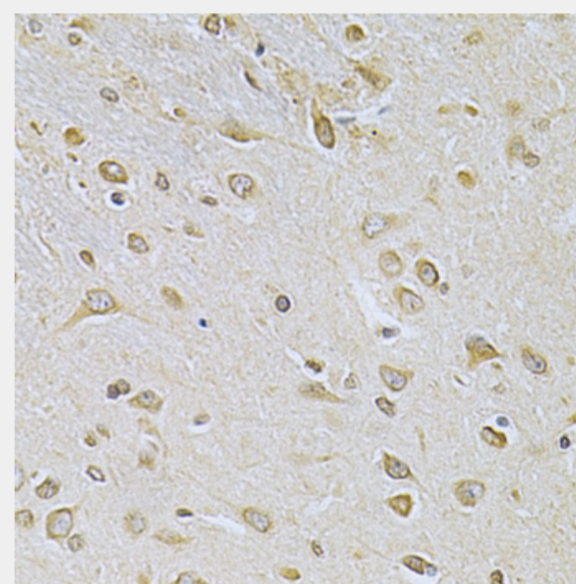
Immunofluorescence analysis of GFP-RNF168 transgenic U2OS cells using SUMO1 antibody. Green □ GFP-RNF168 fusion protein expression for DNA damage marker. Blue: DAPI for nuclear staining. RNF168(GFP) can be used to mark cells damaged by UV-A laser for they always gather around DNA damage region.



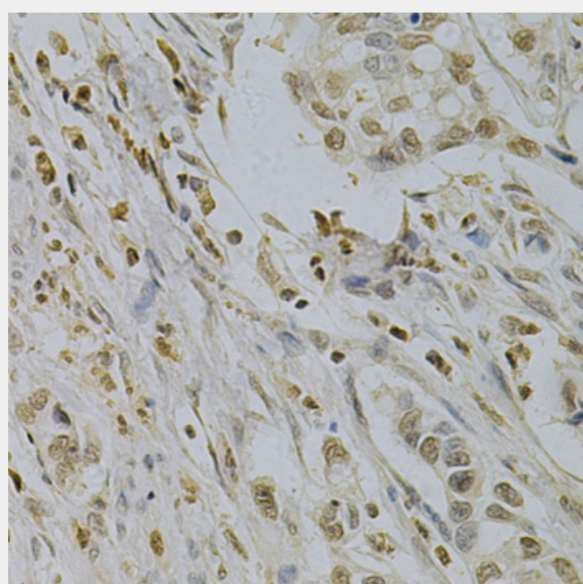
Immunohistochemistry of paraffin-embedded rat testis using SUMO1 Antibody at dilution of 1:200 (40x lens).



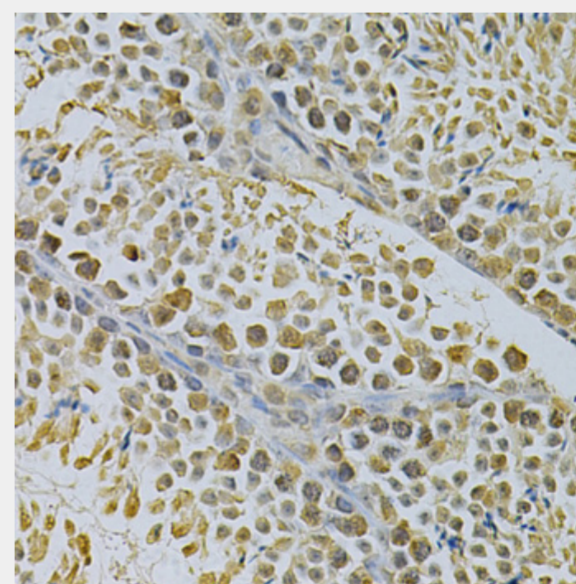
Immunohistochemistry of paraffin-embedded human stomach using SUMO1 Antibody at dilution of 1:200 (40x lens).



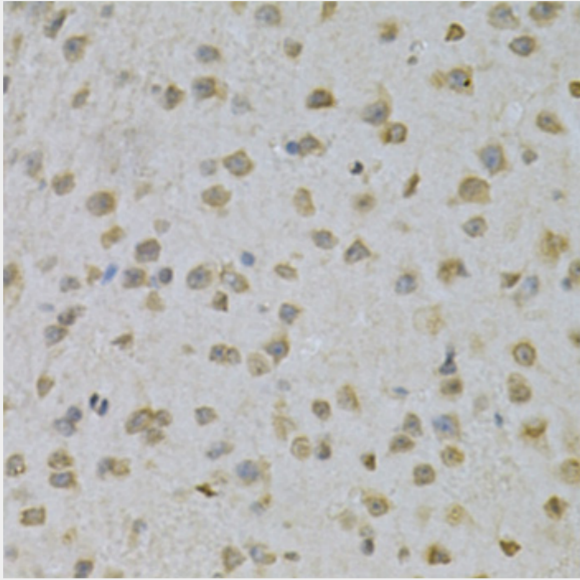
Immunohistochemistry of paraffin-embedded rat brain using SUMO1 Antibody at dilution of 1:200 (40x lens).



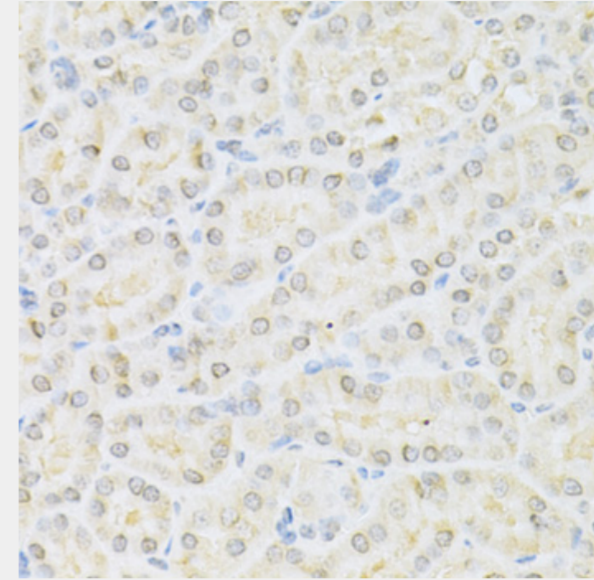
Immunohistochemistry of paraffin-embedded human gastric cancer using SUMO1 Antibody at dilution of 1:200 (40x lens).



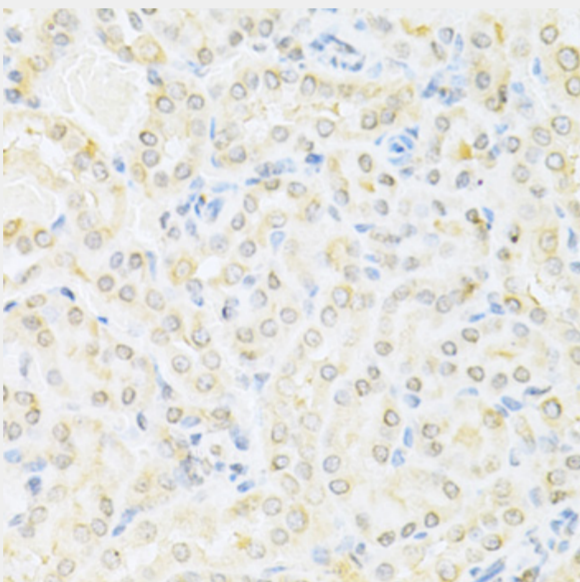
Immunohistochemistry of paraffin-embedded mouse testis using SUMO1 Antibody at dilution of 1:200 (40x lens).



Immunohistochemistry of paraffin-embedded mouse brain using SUMO1 Antibody at dilution of 1:200 (40x lens).



Immunohistochemistry of paraffin-embedded mouse kidney using SUMO1 Antibody at dilution of 1:200 (40x lens).



Immunohistochemistry of paraffin-embedded mouse kidney using SUMO1 Antibody at dilution of 1:200 (40x lens).

All products are for RESEARCH USE ONLY. Not for diagnostic & therapeutic purposes!