

# Anti SFPQ Antibody

Catalog No: tcsa18018



## Available Sizes

---

**Size:** 100µl



## Specifications

---

**Application:**

WB, IHC, IF

**Species Reactivity:**

Human, Mouse, Rat

**Host Species:**

Rabbit

**Immunogen / Amino acids:**

Recombinant protein of human SFPQ

**Conjugation:**

Unconjugated

**Clonality:**

Polyclonal

**Isotype:**

IgG

**Form:**

Liquid

**Storage Buffer:**

PBS with 0.02% sodium azide, 50% glycerol, pH7.3.

**Recommended Dilution:**

WB 1:500 - 1:1000

IHC 1:50 - 1:100

IF 1:50 - 1:100

**Storage Instruction:**

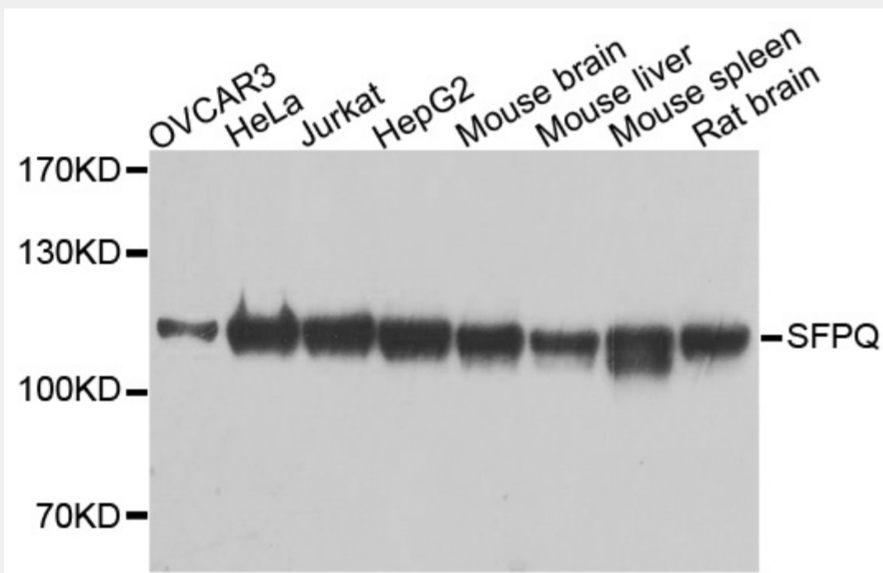
Store at -20C. Avoid freeze / thaw cycles.

**Alternative Names:**

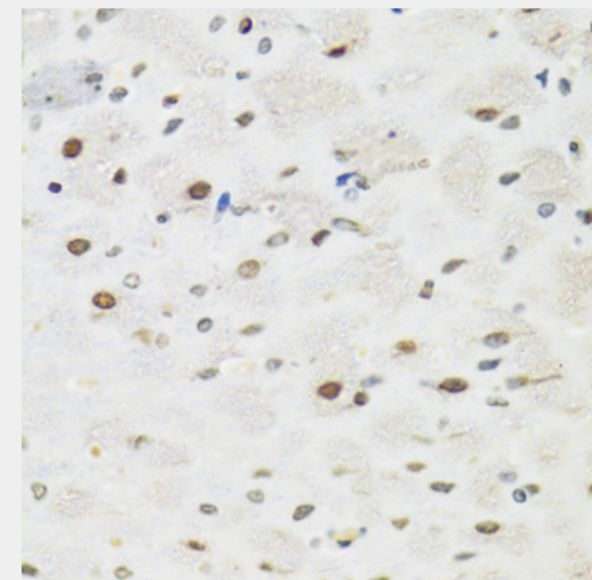
SFPQ antibody; Splicing factor antibody; proline- and glutamine-rich antibody; 100 kDa DNA-pairing protein antibody; hPOMp100 antibody; DNA-binding p52/p100 complex antibody; 100 kDa subunit antibody; Polypyrimidine tract-binding prot

**SwissProt:**

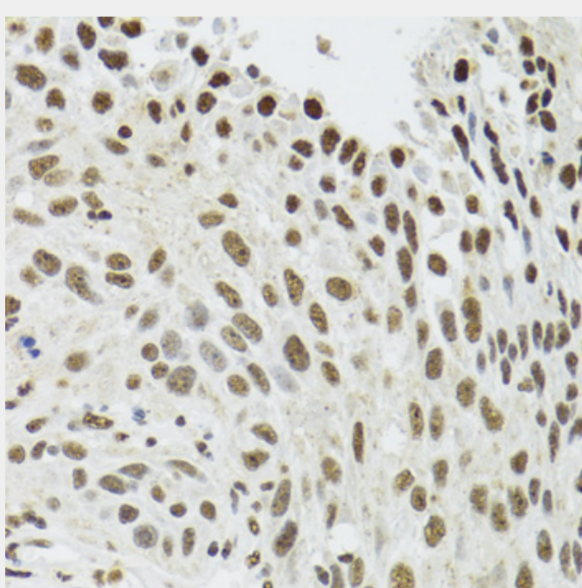
P23246



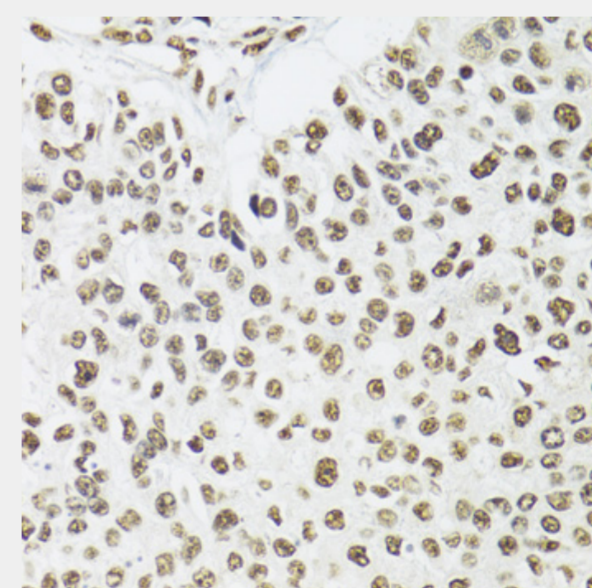
Western blot analysis of extracts of various cell lines, using SFPQ antibody at 1:1000 dilution. Secondary antibody: HRP Goat Anti-Rabbit IgG (H+L) at 1:10000 dilution. Lysates/proteins: 25ug per lane. Blocking buffer: 3% nonfat dry milk in TBST. Detection: ECL Basic Kit. Exposure time: 1s.



Immunohistochemistry of paraffin-embedded rat brain using SFPQ antibody at dilution of 1:100 (40x lens).

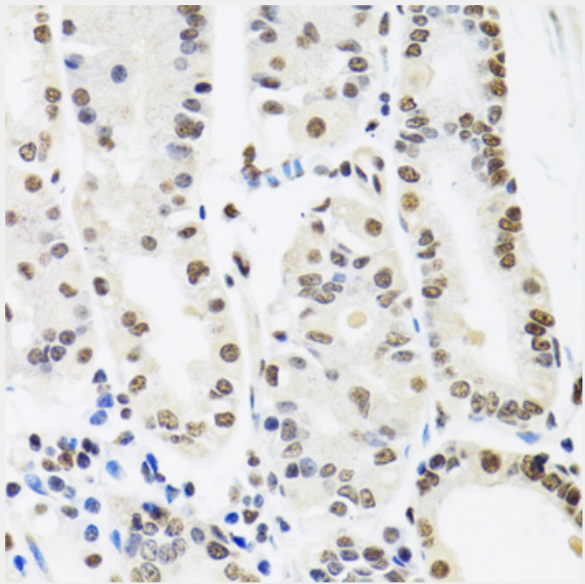


Immunohistochemistry of paraffin-embedded human lung cancer using SFPQ antibody at dilution of 1:100 (40x lens).

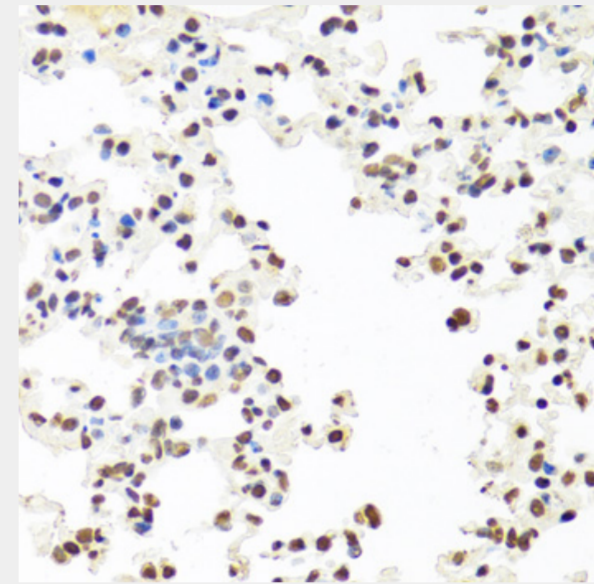


Immunohistochemistry of paraffin-embedded human esophageal cancer using SFPQ antibody at dilution of 1:100 (40x lens).

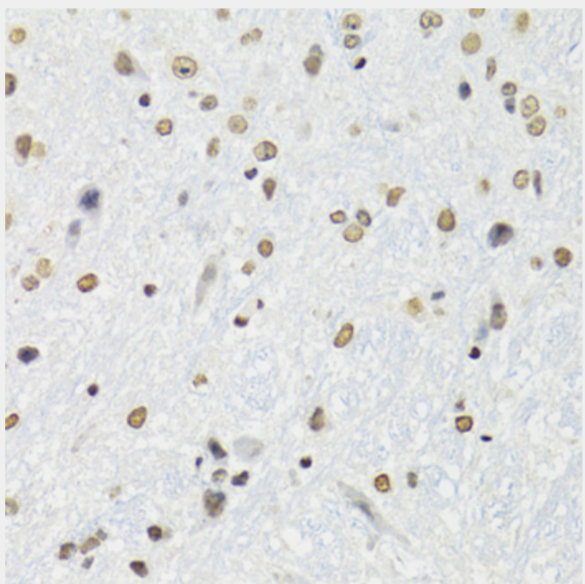




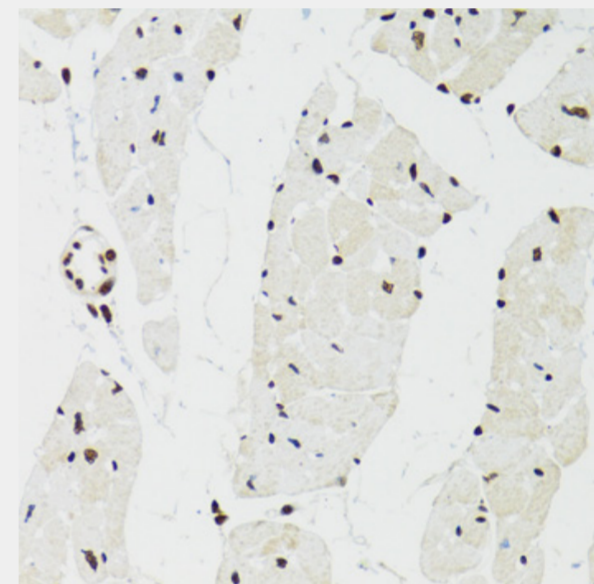
Immunohistochemistry of paraffin-embedded human stomach using SFPQ antibody at dilution of 1:100 (40x lens).



Immunohistochemistry of paraffin-embedded mouse lung using SFPQ antibody at dilution of 1:100 (40x lens).



Immunohistochemistry of paraffin-embedded mouse brain using SFPQ antibody at dilution of 1:100 (40x lens).



Immunohistochemistry of paraffin-embedded mouse heart using SFPQ antibody at dilution of 1:100 (40x lens).

All products are for RESEARCH USE ONLY. Not for diagnostic & therapeutic purposes!