

# Anti SFN Antibody

Catalog No: tcsa18017



## Available Sizes

---

**Size:** 100µl

---



## Specifications

---

**Application:**

WB, IHC, IF

---

**Species Reactivity:**

Human, Mouse, Rat

---

**Host Species:**

Rabbit

---

**Immunogen / Amino acids:**

Recombinant protein of human SFN

---

**Conjugation:**

Unconjugated

---

**Clonality:**

Polyclonal

---

**Isotype:**

IgG

---

**Form:**

Liquid

---

**Storage Buffer:**

PBS with 0.02% sodium azide, 50% glycerol, pH7.3.

---

**Recommended Dilution:**

WB 1:500 - 1:2000

IHC 1:50 - 1:200

IF 1:50 - 1:200

---

**Storage Instruction:**

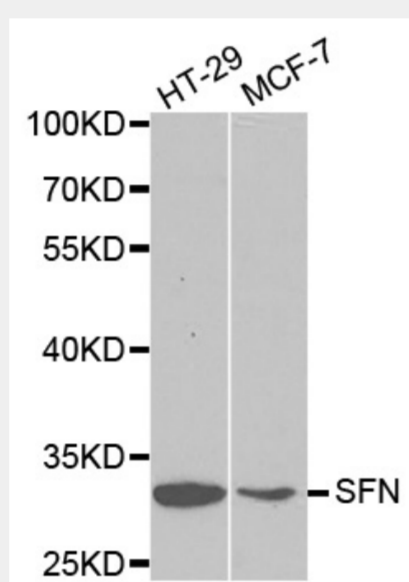
Store at -20C. Avoid freeze / thaw cycles.

**Alternative Names:**

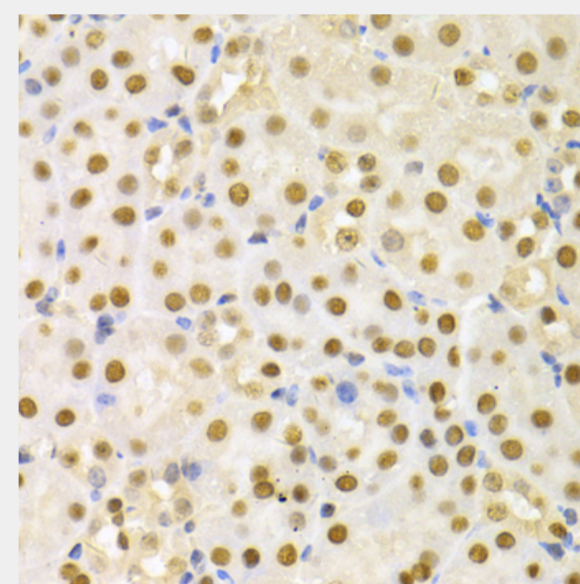
SFN antibody; 14-3-3 protein sigma antibody; Epithelial cell marker protein 1 antibody; Stratifin antibody; SFN antibody; HME1 antibody

**SwissProt:**

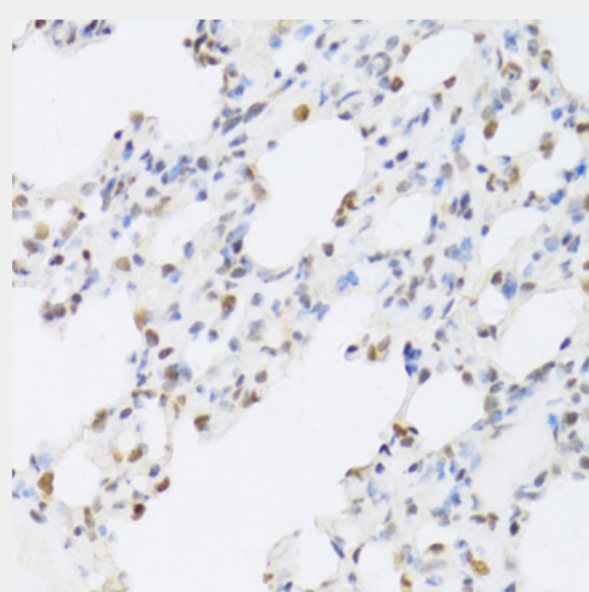
P31947



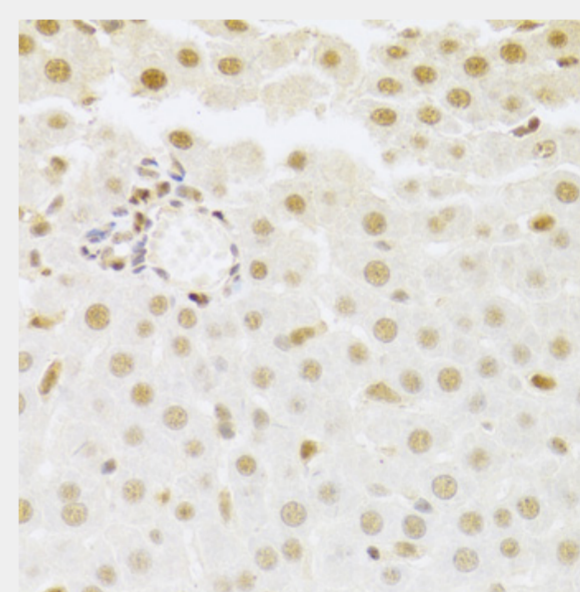
Western blot analysis of extracts of various cell lines, using SFN antibody at 1:1000 dilution. Secondary antibody: HRP Goat Anti-Rabbit IgG (H+L) at 1:10000 dilution. Lysates/proteins: 25ug per lane. Blocking buffer: 3% nonfat dry milk in TBST.



Immunohistochemistry of paraffin-embedded mouse kidney using SFN Antibody at dilution of 1:100 (40x lens).

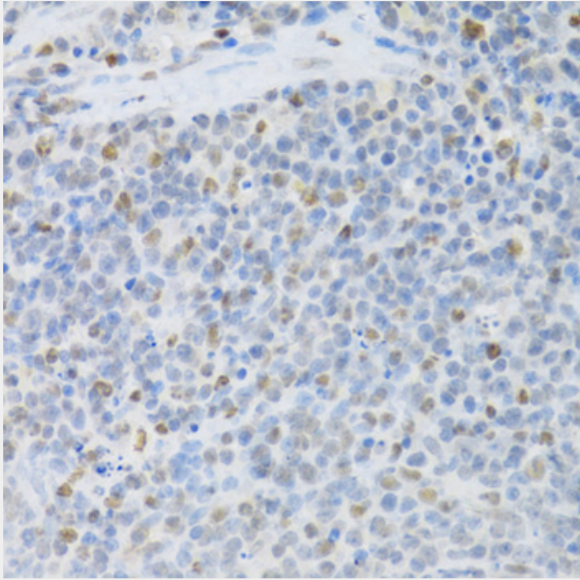


Immunohistochemistry of paraffin-embedded rat lung using SFN Antibody at dilution of 1:100 (40x lens).

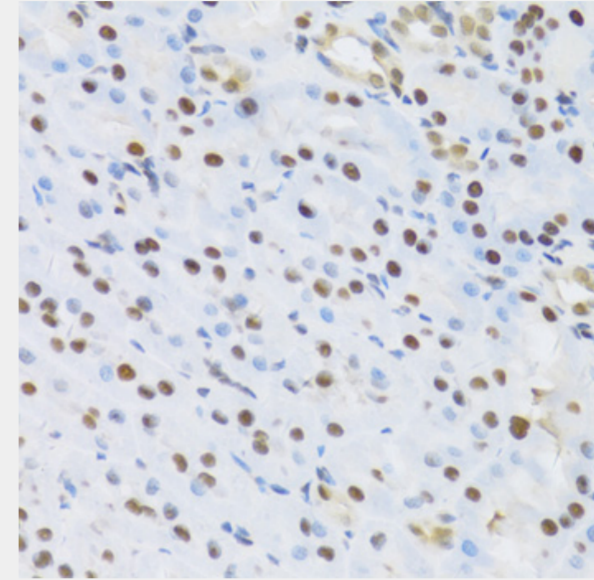


Immunohistochemistry of paraffin-embedded rat liver using SFN Antibody at dilution of 1:100 (40x lens).

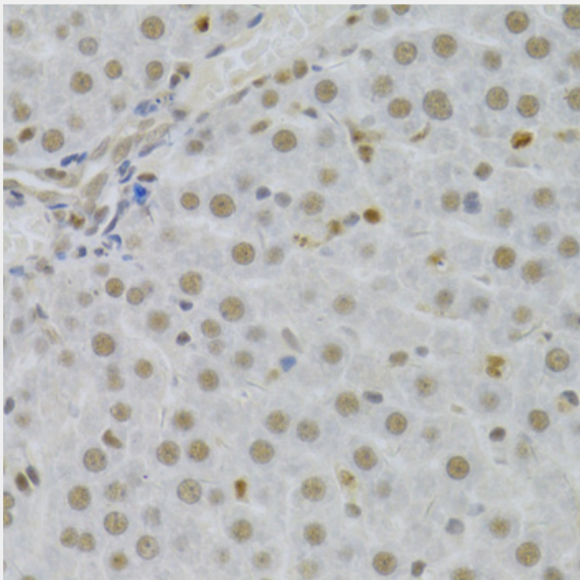




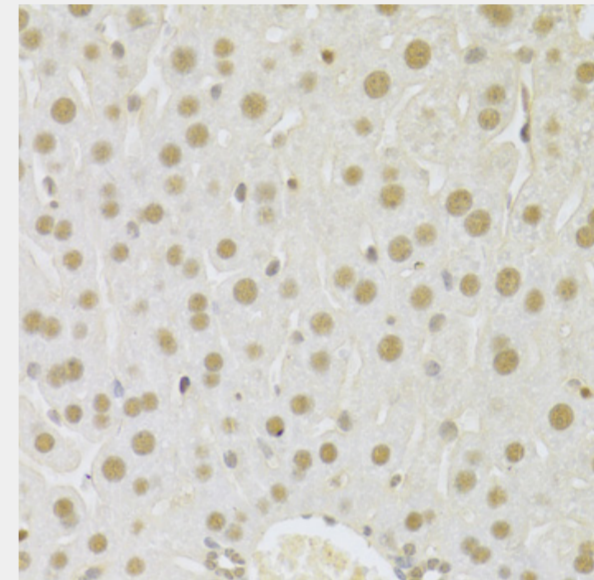
Immunohistochemistry of paraffin-embedded rat spleen using SFN Antibody at dilution of 1:100 (40x lens).



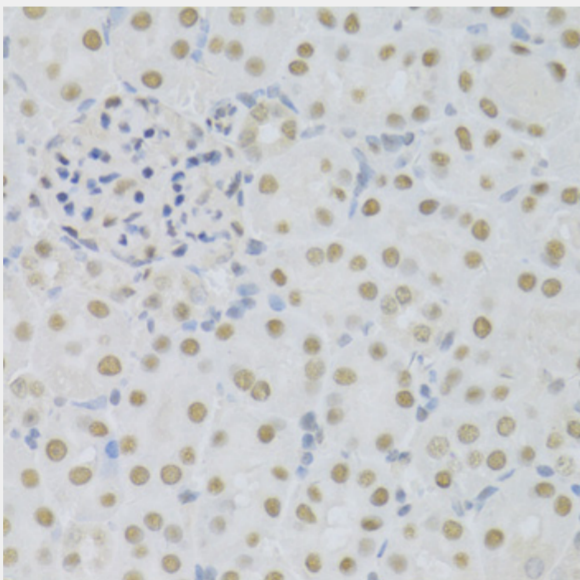
Immunohistochemistry of paraffin-embedded rat kidney using SFN Antibody at dilution of 1:100 (40x lens).



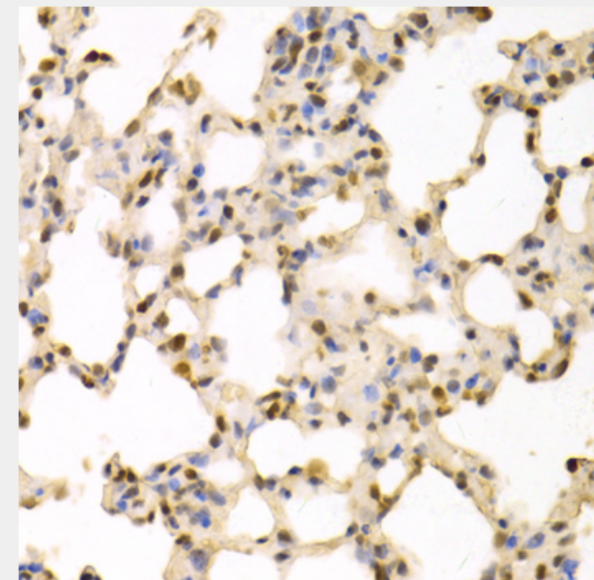
Immunohistochemistry of paraffin-embedded human liver using SFN Antibody at dilution of 1:100 (40x lens).



Immunohistochemistry of paraffin-embedded mouse liver using SFN Antibody at dilution of 1:100 (40x lens).

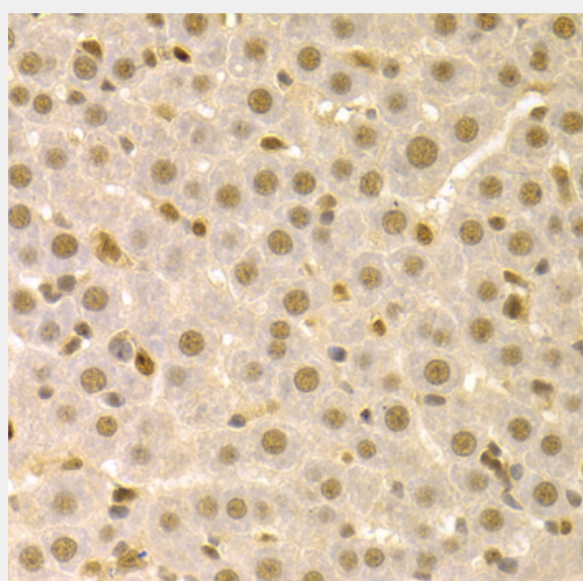


Immunohistochemistry of paraffin-embedded mouse kidney using SFN Antibody at dilution of 1:100 (40x lens).

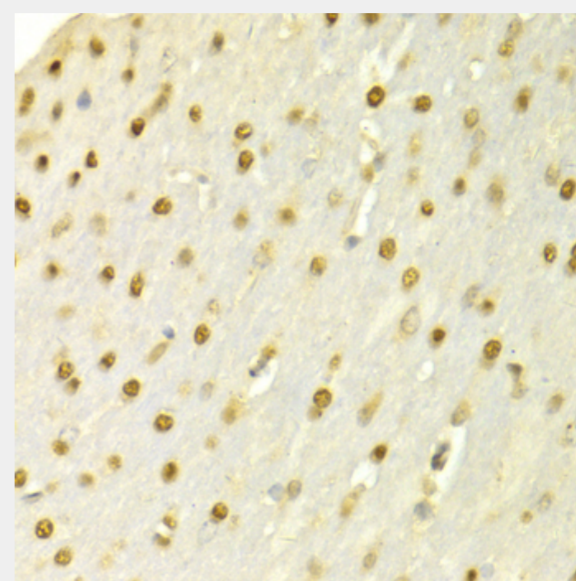


Immunohistochemistry of paraffin-embedded rat lung using SFN Antibody at dilution of 1:100 (40x lens).

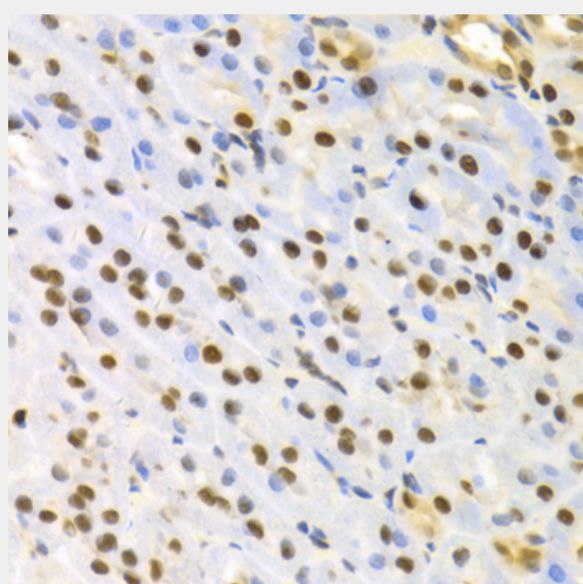




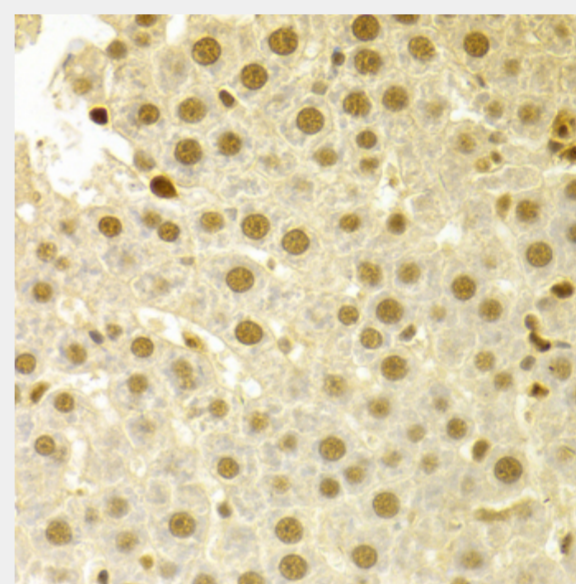
Immunohistochemistry of paraffin-embedded rat liver using SFN Antibody at dilution of 1:100 (40x lens).



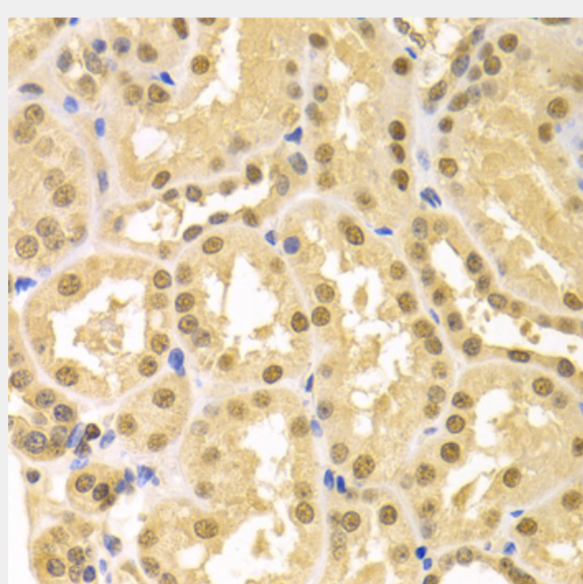
Immunohistochemistry of paraffin-embedded rat brain using SFN Antibody at dilution of 1:100 (40x lens).



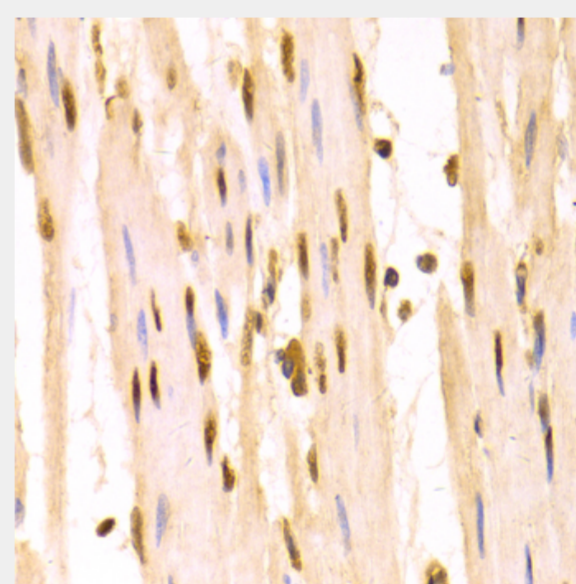
Immunohistochemistry of paraffin-embedded rat kidney using SFN Antibody at dilution of 1:100 (40x lens).



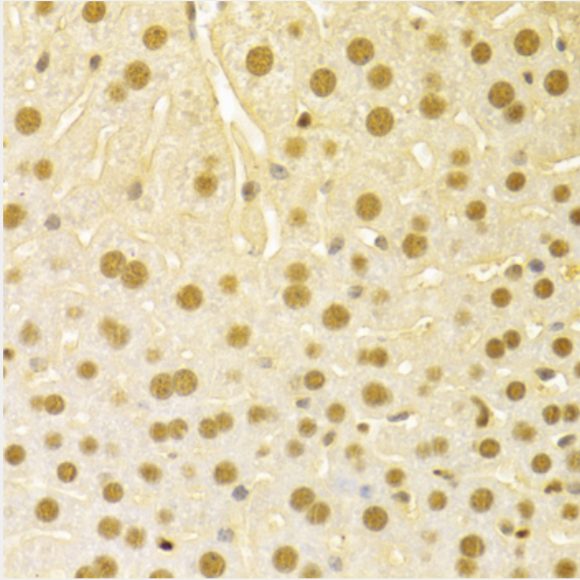
Immunohistochemistry of paraffin-embedded human liver injury using SFN Antibody at dilution of 1:100 (40x lens).



Immunohistochemistry of paraffin-embedded human kidney using SFN Antibody at dilution of 1:100 (40x lens).



Immunohistochemistry of paraffin-embedded human esophagus using SFN Antibody at dilution of 1:100 (40x lens).



Immunohistochemistry of paraffin-embedded mouse liver using SFN Antibody at dilution of 1:100 (40x lens).

All products are for RESEARCH USE ONLY. Not for diagnostic & therapeutic purposes!