

Anti RBF0X3 Antibody

Catalog No: tcsa17898



Available Sizes

Size: 100µl



Specifications

Application:

WB, IF

Species Reactivity:

Human, Mouse, Rat

Host Species:

Rabbit

Immunogen / Amino acids:

A synthetic peptide of human RBF0X3

Conjugation:

Unconjugated

Clonality:

Polyclonal

Isotype:

IgG

Form:

Liquid

Storage Buffer:

PBS with 0.02% sodium azide, 50% glycerol, pH7.3.

Recommended Dilution:

WB 1:500 - 1:2000

IF 1:50 - 1:200

Storage Instruction:

Store at -20C. Avoid freeze / thaw cycles.

Alternative Names:

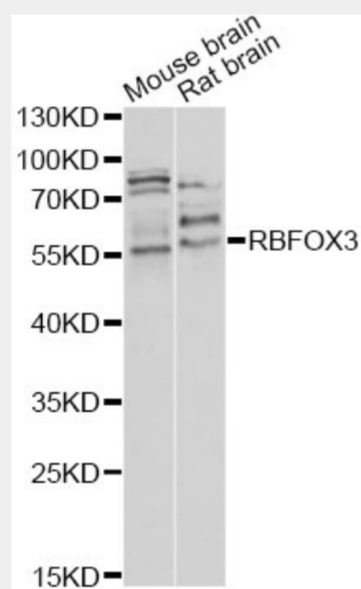
RBFOX3 antibody; RNA binding protein fox-1 homolog 3 antibody; Fox-1 homolog C antibody; Neuronal nuclei antigen antibody; NeuN antigen antibody; RBFOX3 antibody

SwissProt:

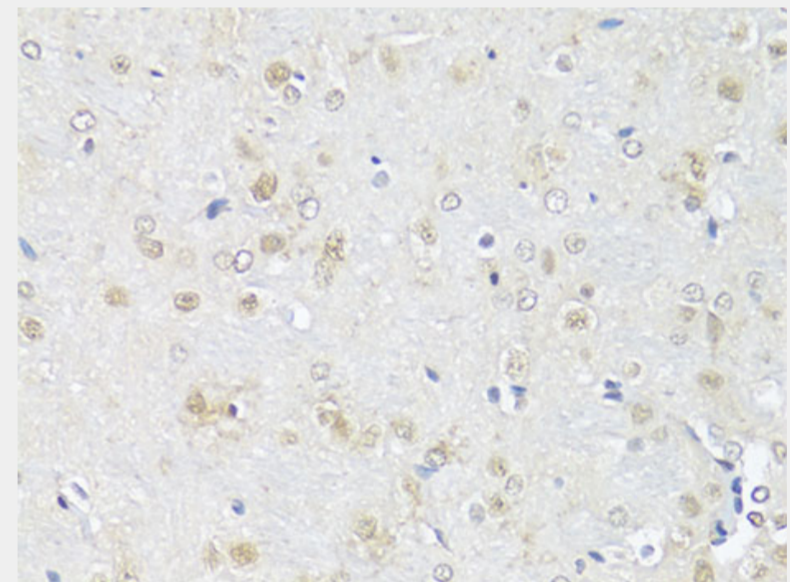
A6NFN3

Product Description

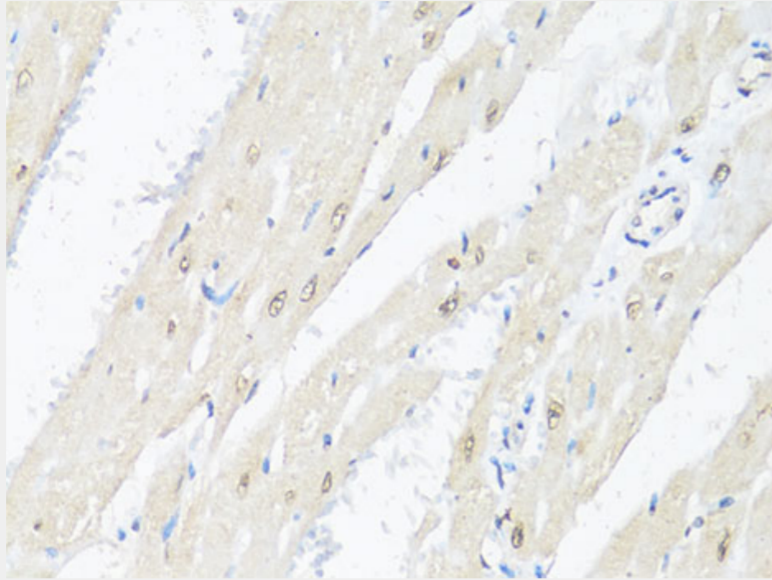
This gene encodes a member of the RNA-binding FOX protein family which is involved in the regulation of alternative splicing of pre-mRNA. The protein has an N-terminal proline-rich region, an RNA recognition motif (RRM) domain, and a C-terminal alanine-rich region. This gene produces the neuronal nuclei (NeuN) antigen that has been widely used as a marker for post-mitotic neurons. This gene has its highest expression in the central nervous system and plays a prominent role in neural tissue development and regulation of adult brain function. Mutations in this gene have been associated with numerous neurological disorders. Alternative splicing of this gene results in multiple transcript variants encoding distinct isoforms.



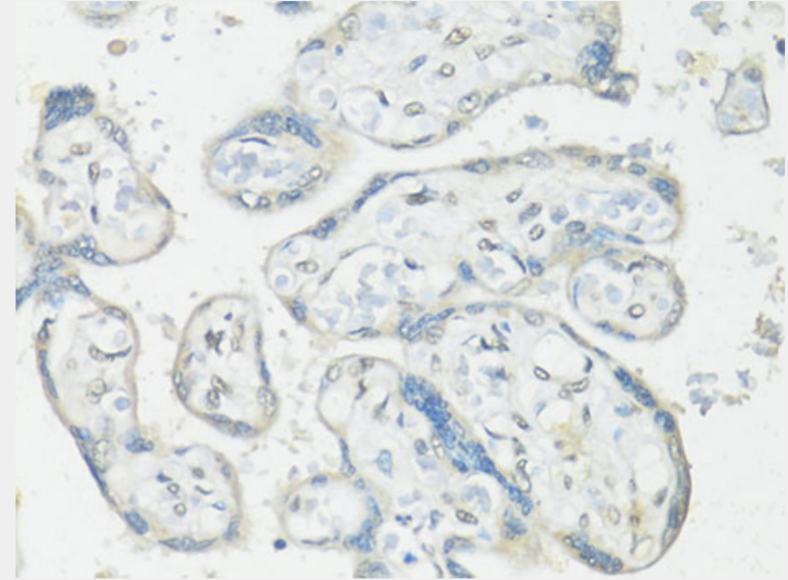
Western blot analysis of extracts of various cell lines, using RBFOX3 antibody at 1:1000 dilution. Secondary antibody: HRP Goat Anti-Rabbit IgG (H+L) at 1:10000 dilution. Lysates/proteins: 25ug per lane. Blocking buffer: 3% nonfat dry milk in TBST. Detection: ECL Basic Kit. Exposure time: 5s.



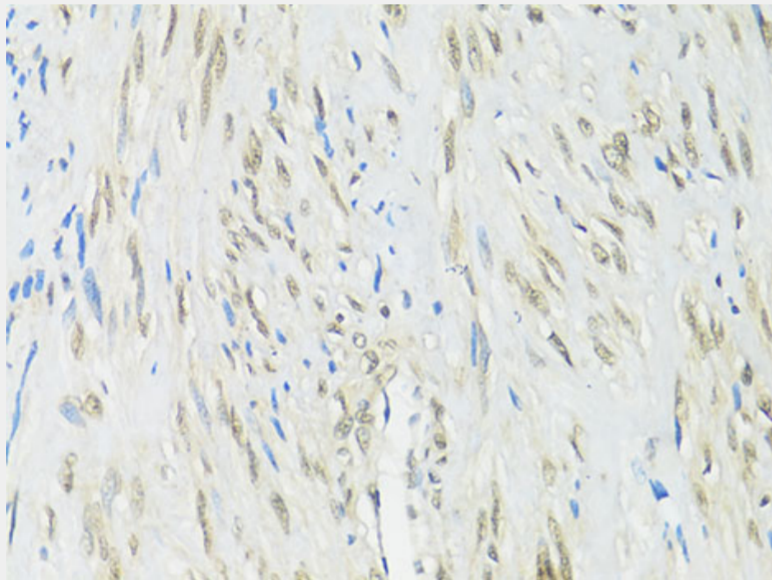
Immunohistochemistry of paraffin-embedded rat brain using RBFOX3 antibody at dilution of 1:100 (40x lens).



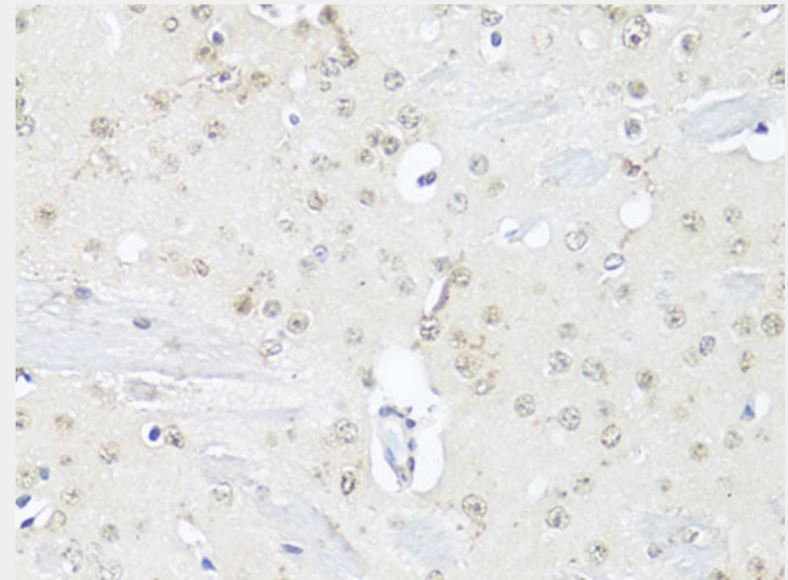
Immunohistochemistry of paraffin-embedded rat heart using RBFOX3 antibody at dilution of 1:100 (40x lens).



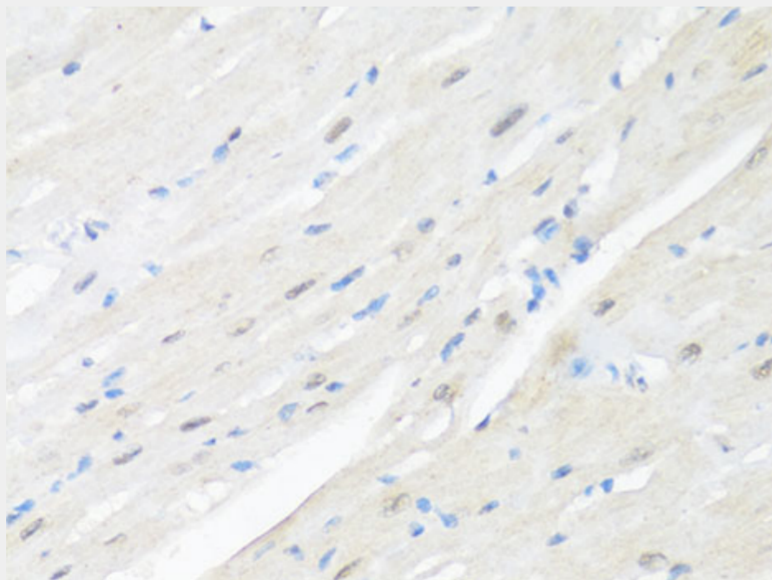
Immunohistochemistry of paraffin-embedded human placenta using RBFOX3 antibody at dilution of 1:100 (40x lens).



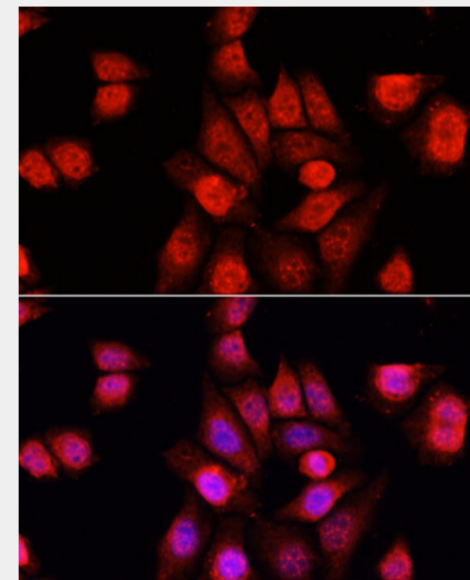
Immunohistochemistry of paraffin-embedded human uterus using RBFOX3 antibody at dilution of 1:100 (40x lens).



Immunohistochemistry of paraffin-embedded mouse brain using RBFOX3 antibody at dilution of 1:100 (40x lens).



Immunohistochemistry of paraffin-embedded mouse heart using RBFOX3 antibody at dilution of 1:100 (40x lens).



Immunofluorescence analysis of HeLa cells using RBFOX3 antibody at dilution of 1:100. Blue: DAPI for nuclear staining.

All products are for RESEARCH USE ONLY. Not for diagnostic & therapeutic purposes!