

Anti PVALB Antibody

Catalog No: tcsa17854



Available Sizes

Size: 100µl



Specifications

Application:

WB, IHC

Species Reactivity:

Human, Mouse, Rat

Host Species:

Rabbit

Immunogen / Amino acids:

Recombinant protein of human PVALB

Conjugation:

Unconjugated

Clonality:

Polyclonal

Isotype:

IgG

Form:

Liquid

Storage Buffer:

PBS with 0.02% sodium azide, 50% glycerol, pH7.3.

Recommended Dilution:

WB 1:400 - 1:2000

IHC 1:50 - 1:200

Storage Instruction:

Store at -20C. Avoid freeze / thaw cycles.

Alternative Names:

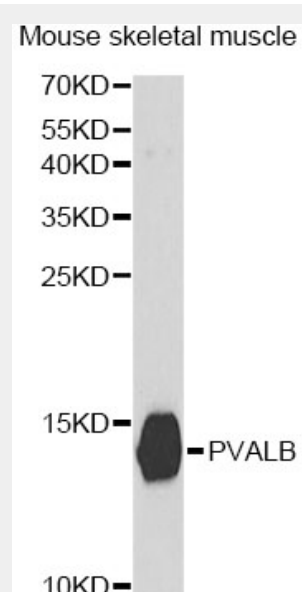
PVALB antibody; Parvalbumin alpha antibody; PVALB antibody

SwissProt:

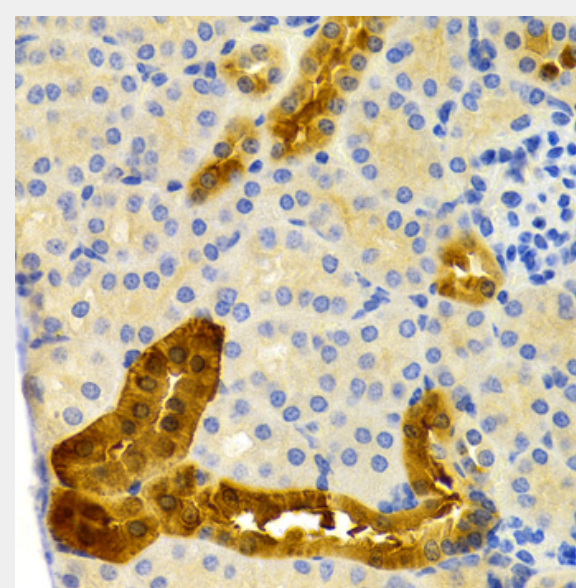
P20472

Product Description

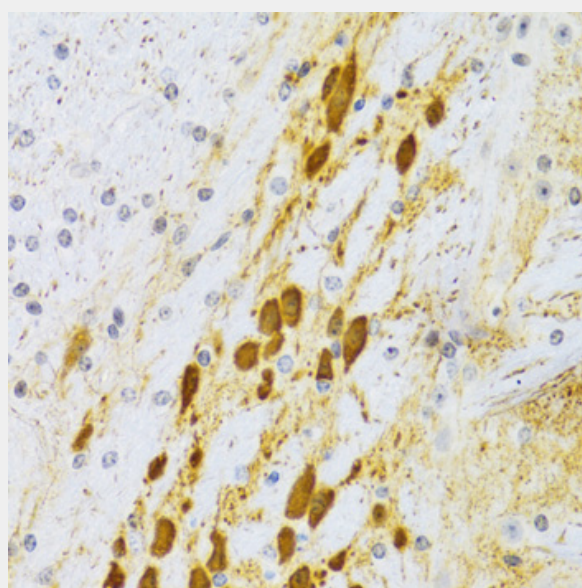
The protein encoded by this gene is a high affinity calcium ion-binding protein that is structurally and functionally similar to calmodulin and troponin C. The encoded protein is thought to be involved in muscle relaxation. Alternative splicing results in multiple transcript variants.



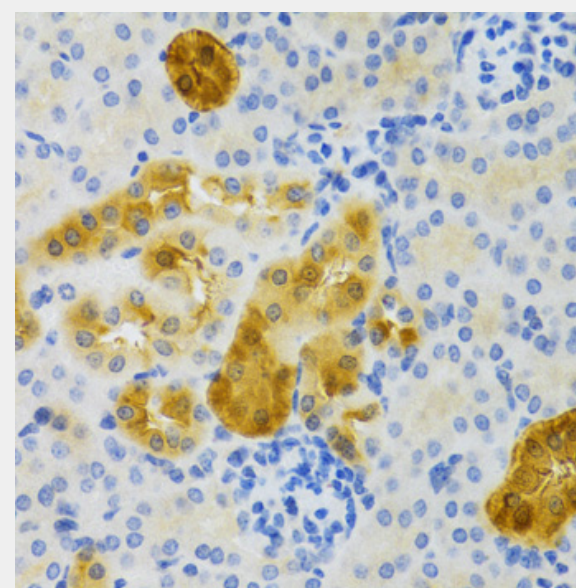
Western blot analysis of extracts of mouse skeletal muscle, using PVALB antibody at 1:400 dilution. Secondary antibody: HRP Goat Anti-Rabbit IgG (H+L) at 1:10000 dilution. Lysates/proteins: 25ug per lane. Blocking buffer: 3% nonfat dry milk in TBST. Detection: ECL Basic Kit. Exposure time: 90s.



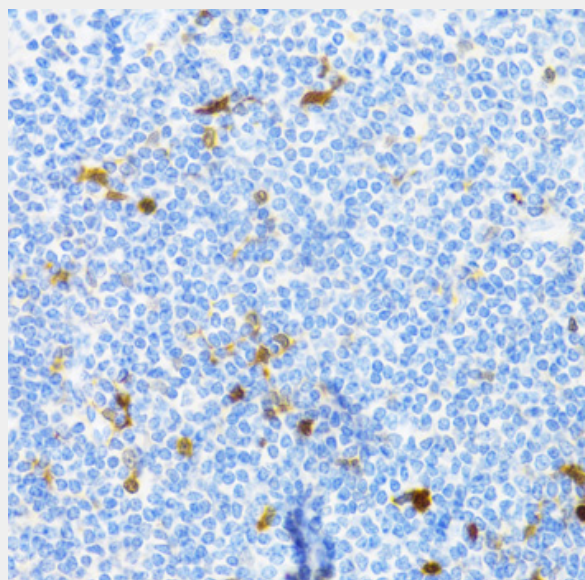
Immunohistochemistry of paraffin-embedded mouse kidney using PVALB Antibody at dilution of 1:200 (40x lens).



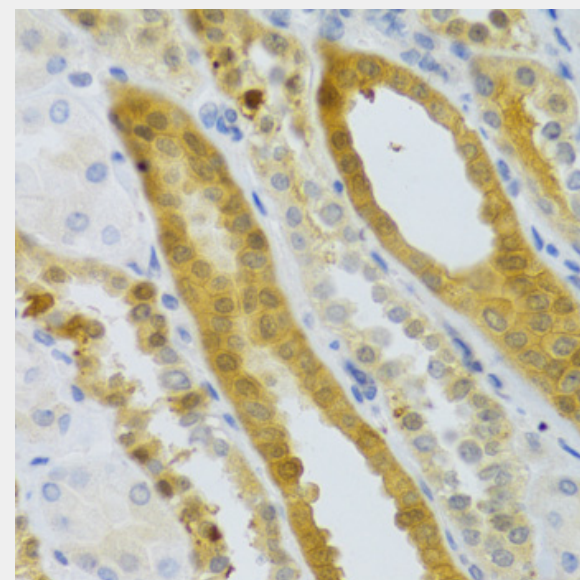
Immunohistochemistry of paraffin-embedded rat brain using PVALB Antibody at dilution of 1:100 (40x lens).



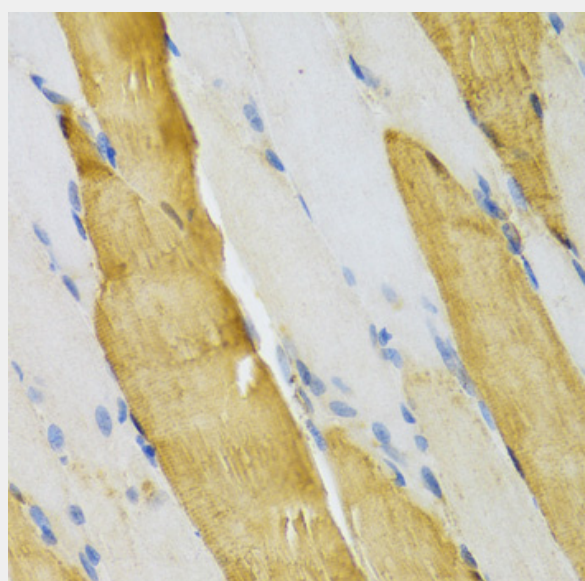
Immunohistochemistry of paraffin-embedded rat kidney using PVALB Antibody at dilution of 1:100 (40x lens).



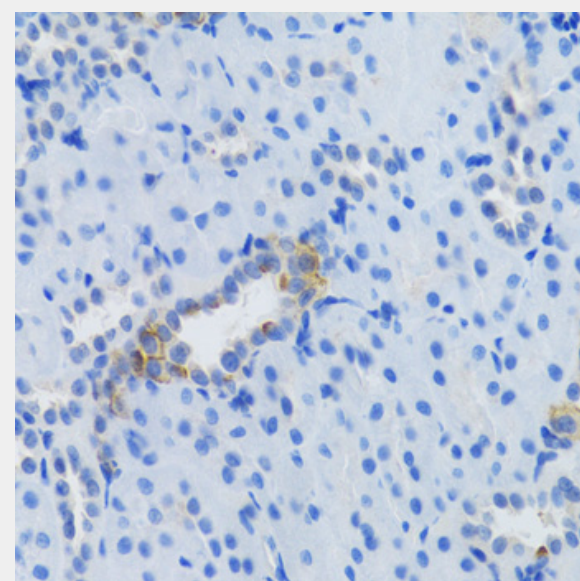
Immunohistochemistry of paraffin-embedded human tonsil using PVALB Antibody at dilution of 1:100 (40x lens).



Immunohistochemistry of paraffin-embedded human kidney using PVALB Antibody at dilution of 1:100 (40x lens).



Immunohistochemistry of paraffin-embedded mouse skeletal muscle using PVALB Antibody at dilution of 1:100 (40x lens).



Immunohistochemistry of paraffin-embedded mouse kidney using PVALB Antibody at dilution of 1:100 (40x lens).

All products are for RESEARCH USE ONLY. Not for diagnostic & therapeutic purposes!