

Anti NLK Antibody

Catalog No: tcsa17527



Available Sizes

Size: 100μl



Specifications

Application:

WB, IHC

Species Reactivity:

Human, Mouse, Rat

Host Species:

Rabbit

Immunogen / Amino acids:

Recombinant protein of human NLK

Conjugation:

Unconjugated

Clonality:

Polyclonal

Isotype:

IgG

Form:

Liquid

Storage Buffer:

PBS with 0.02% sodium azide, 50% glycerol, pH7.3.

Recommended Dilution:

WB 1:500 - 1:2000

IHC 1:50 - 1:200

Storage Instruction:

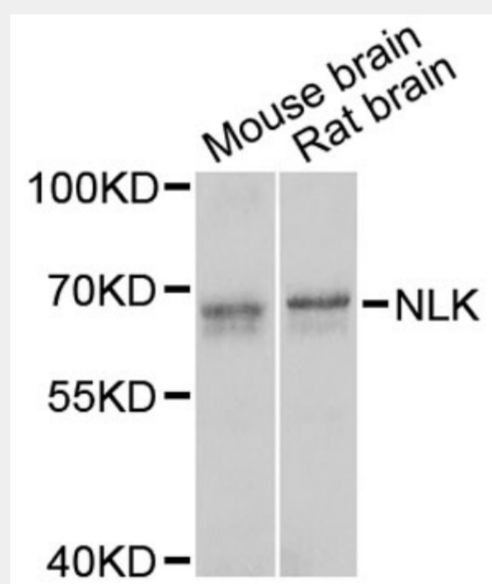
Store at -20C. Avoid freeze / thaw cycles.

Alternative Names:

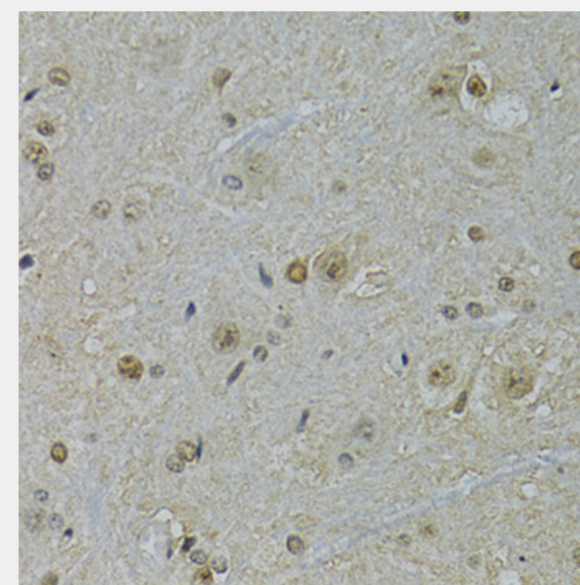
NLK antibody; Serine/threonine-protein kinase NLK antibody; NLK antibody; LAK1 antibody

SwissProt:

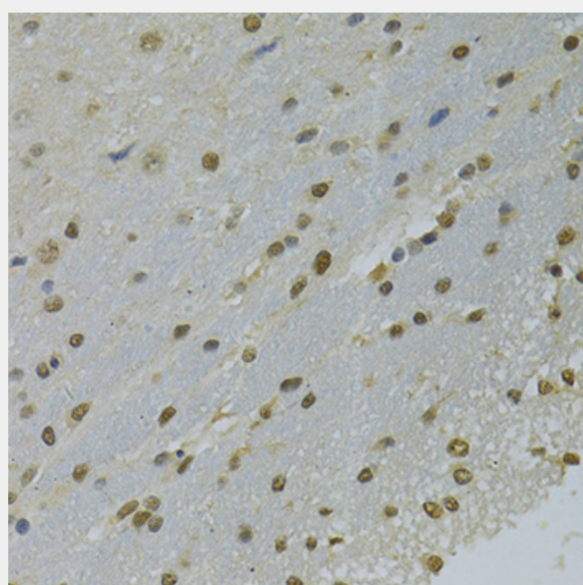
Q9UBE8



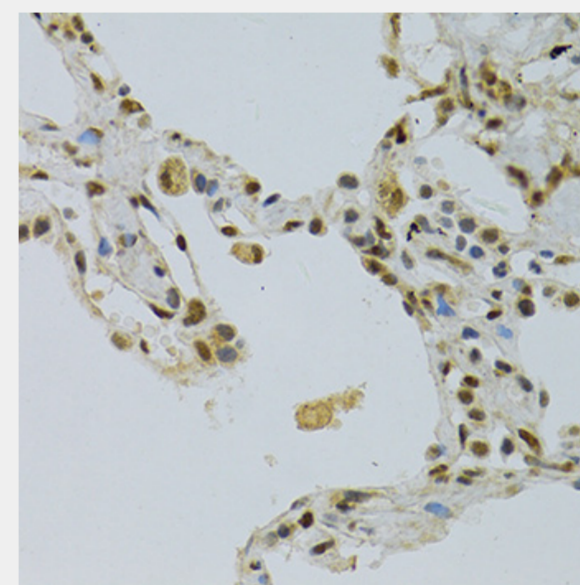
Western blot analysis of extracts of various cell lines, using NLK antibody at 1:1000 dilution. Secondary antibody: HRP Goat Anti-Rabbit IgG (H+L) at 1:10000 dilution. Lysates/proteins: 25ug per lane. Blocking buffer: 3% nonfat dry milk in TBST. Detection: ECL Basic Kit. Exposure time: 90s.



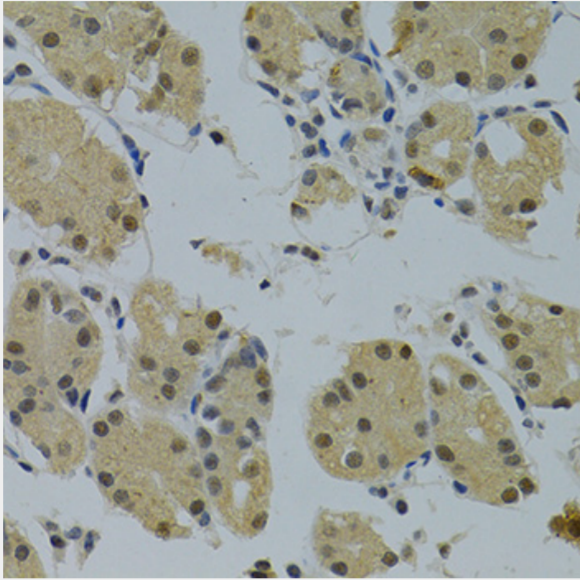
Immunohistochemistry of paraffin-embedded rat spinal cord using NLK antibody at dilution of 1:100 (40x lens).



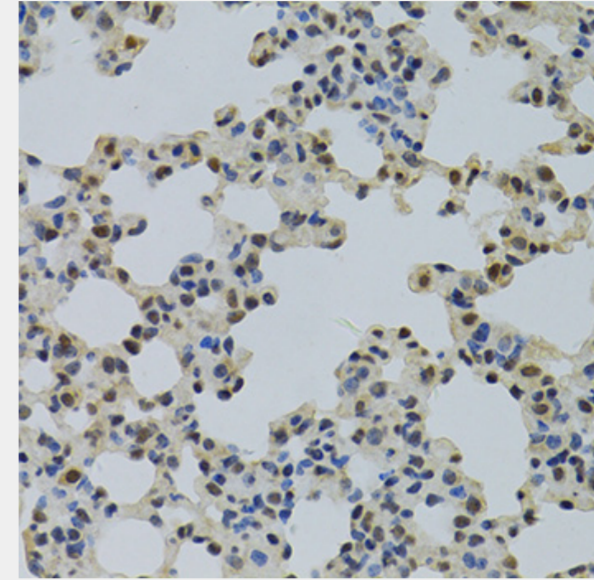
Immunohistochemistry of paraffin-embedded rat brain using NLK antibody at dilution of 1:100 (40x lens).



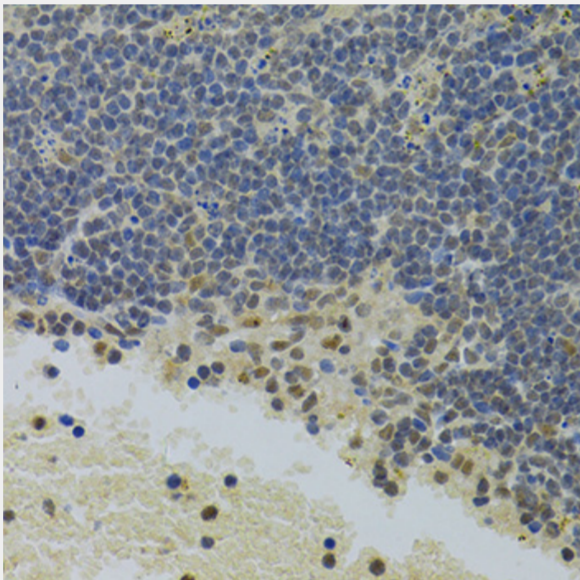
Immunohistochemistry of paraffin-embedded human lung using NLK antibody at dilution of 1:100 (40x lens).



Immunohistochemistry of paraffin-embedded human stomach using NLK antibody at dilution of 1:100 (40x lens).



Immunohistochemistry of paraffin-embedded mouse lung using NLK antibody at dilution of 1:100 (40x lens).



Immunohistochemistry of paraffin-embedded mouse spleen using NLK antibody at dilution of 1:100 (40x lens).

All products are for RESEARCH USE ONLY. Not for diagnostic & therapeutic purposes!