

# Anti MT2A Antibody

Catalog No: tcsa17429



## Available Sizes

---

**Size:** 100μl



## Specifications

---

**Application:**

WB, IHC

**Species Reactivity:**

Human, Mouse, Rat

**Host Species:**

Rabbit

**Immunogen / Amino acids:**

Recombinant protein of human MT2A

**Conjugation:**

Unconjugated

**Clonality:**

Polyclonal

**Isotype:**

IgG

**Form:**

Liquid

**Storage Buffer:**

PBS with 0.02% sodium azide, 50% glycerol, pH7.3.

**Recommended Dilution:**

WB 1:500 - 1:2000

IHC 1:50 - 1:200

**Storage Instruction:**

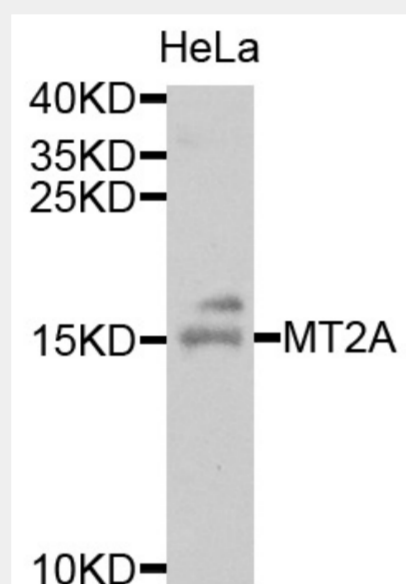
Store at -20C. Avoid freeze / thaw cycles.

**Alternative Names:**

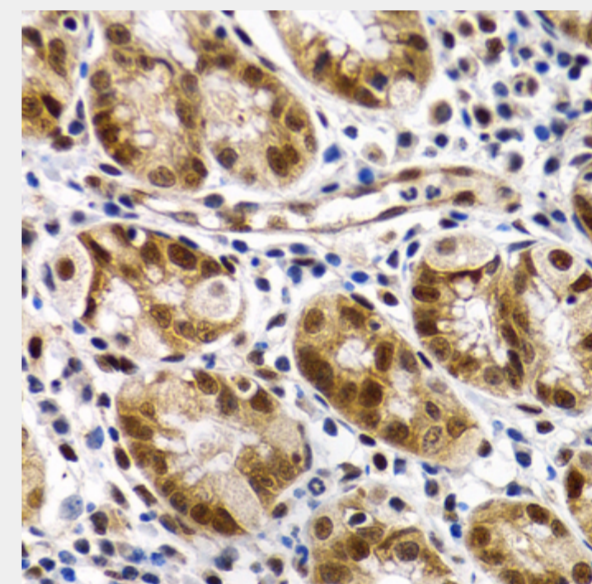
MT2A antibody; Metallothionein-2 antibody; MT-2 antibody; Metallothionein-2A antibody; Metallothionein-II antibody; MT-II antibody; MT2A antibody; CES1 antibody; MT2 antibody

**SwissProt:**

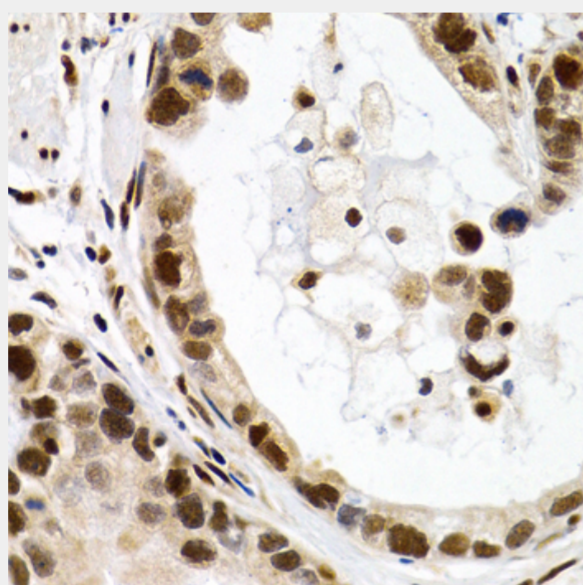
P02795



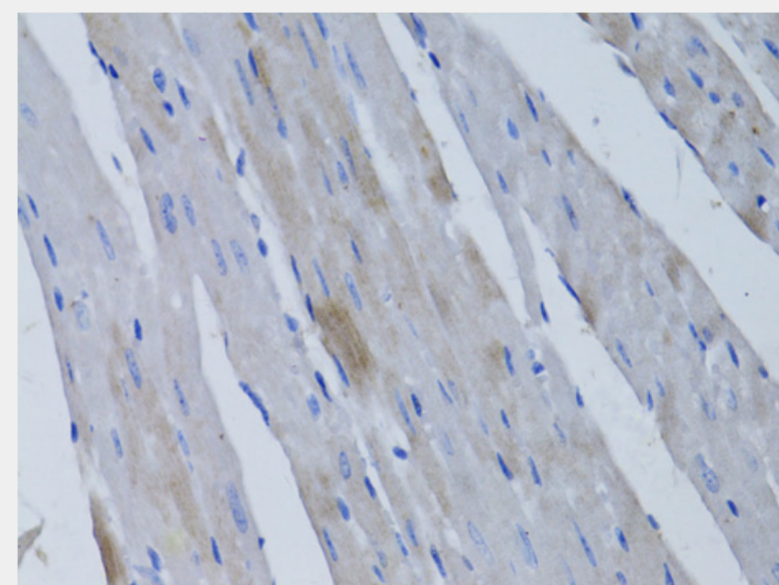
Western blot analysis of extracts of HeLa cells, using MT2A antibody at 1:1000 dilution. Secondary antibody: HRP Goat Anti-Rabbit IgG (H+L) at 1:10000 dilution. Lysates/proteins: 25ug per lane. Blocking buffer: 3% nonfat dry milk in TBST.



Immunohistochemistry of paraffin-embedded human normal stomach using MT2A antibody at dilution of 1:200 (40x lens).

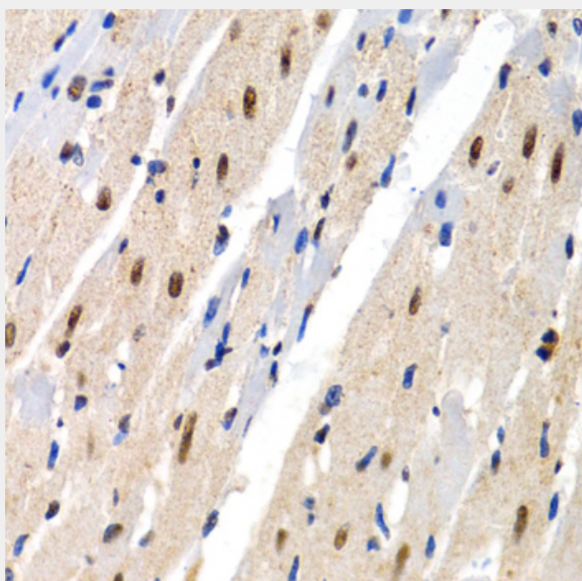


Immunohistochemistry of paraffin-embedded human stomach cancer using MT2A antibody at dilution of 1:200 (40x lens).

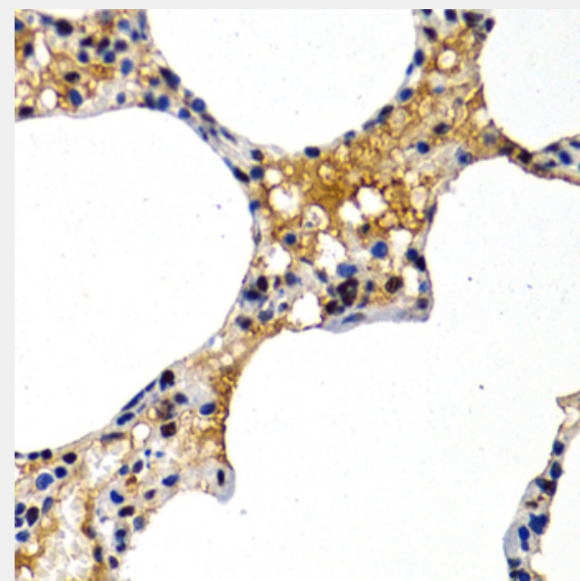


Immunohistochemistry of paraffin-embedded rat heart using MT2A antibody at dilution of 1:50 (40x lens).

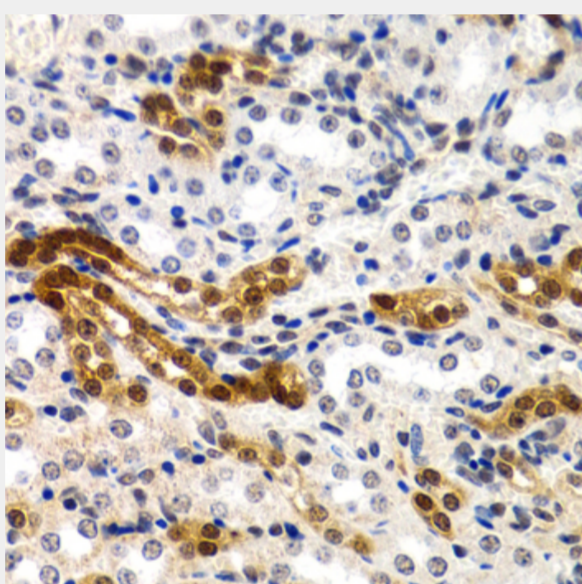




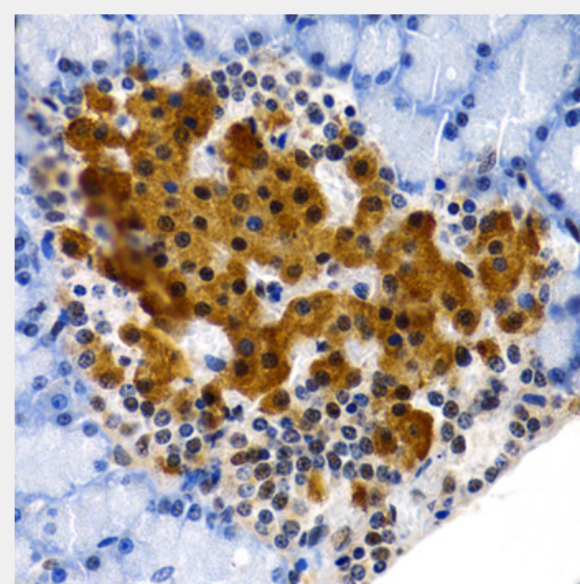
Immunohistochemistry of paraffin-embedded rat heart using MT2A antibody at dilution of 1:200 (40x lens).



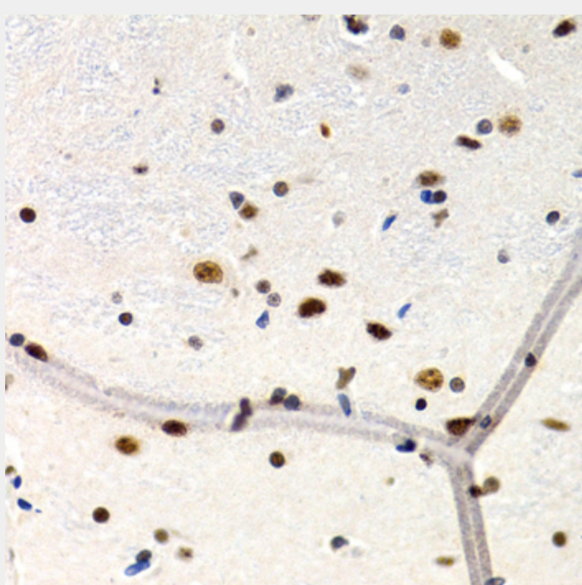
Immunohistochemistry of paraffin-embedded rat lung using MT2A antibody at dilution of 1:200 (40x lens).



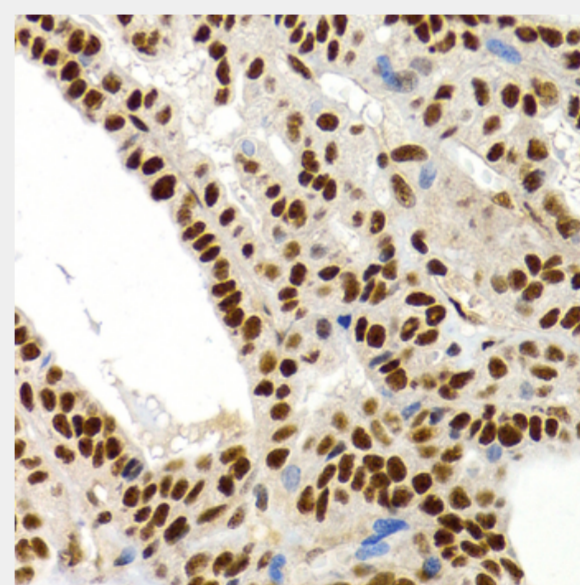
Immunohistochemistry of paraffin-embedded rat kidney using MT2A antibody at dilution of 1:200 (40x lens).



Immunohistochemistry of paraffin-embedded rat pancreas using MT2A antibody at dilution of 1:200 (40x lens).

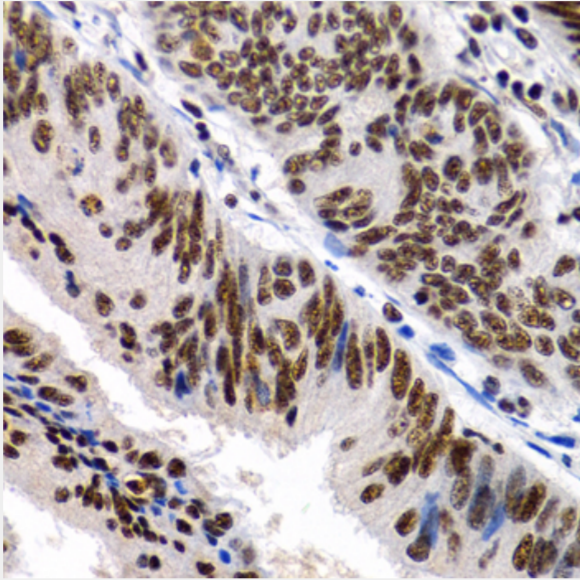


Immunohistochemistry of paraffin-embedded rat brain using MT2A antibody at dilution of 1:200 (40x lens).

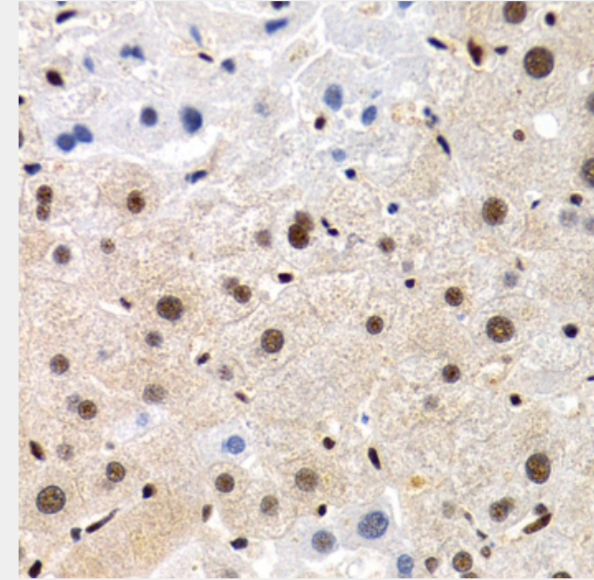


Immunohistochemistry of paraffin-embedded human thyroid cancer using MT2A antibody at dilution of 1:200 (40x lens).





Immunohistochemistry of paraffin-embedded human colon cancer using MT2A antibody at dilution of 1:200 (40x lens).



Immunohistochemistry of paraffin-embedded human liver cancer using MT2A antibody at dilution of 1:200 (40x lens).

All products are for RESEARCH USE ONLY. Not for diagnostic & therapeutic purposes!