

Anti MSH6 Antibody

Catalog No: tcsa17423



Available Sizes

Size: 100µl



Specifications

Application:

WB, IHC, IF

Species Reactivity:

Human, Mouse, Monkey

Host Species:

Rabbit

Immunogen / Amino acids:

Recombinant protein of human MSH6

Conjugation:

Unconjugated

Clonality:

Polyclonal

Isotype:

IgG

Form:

Liquid

Storage Buffer:

PBS with 0.02% sodium azide, 50% glycerol, pH7.3.

Recommended Dilution:

WB 1:500 - 1:2000

IHC 1:50 - 1:200

IF 1:20 - 1:100

Storage Instruction:

Store at -20C. Avoid freeze / thaw cycles.

Alternative Names:

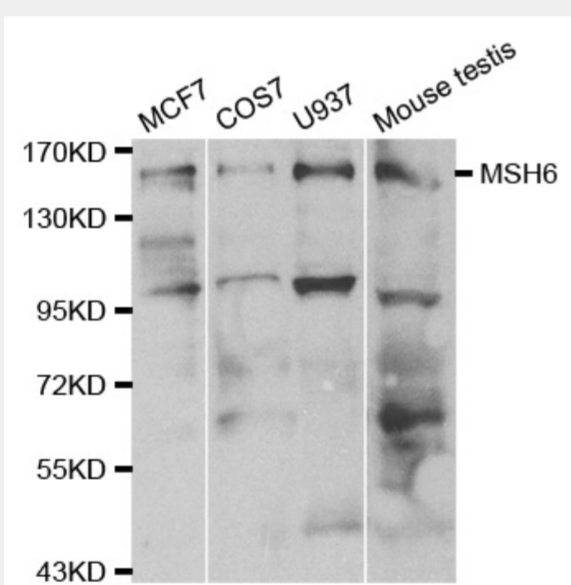
MSH6 antibody; DNA mismatch repair protein Msh6 antibody; hMSH6 antibody; G/T mismatch-binding protein antibody; GTBP antibody; GTMBP antibody; MutS protein homolog 6 antibody; MutS-alpha 160 kDa subunit antibody; p160 antibody

SwissProt:

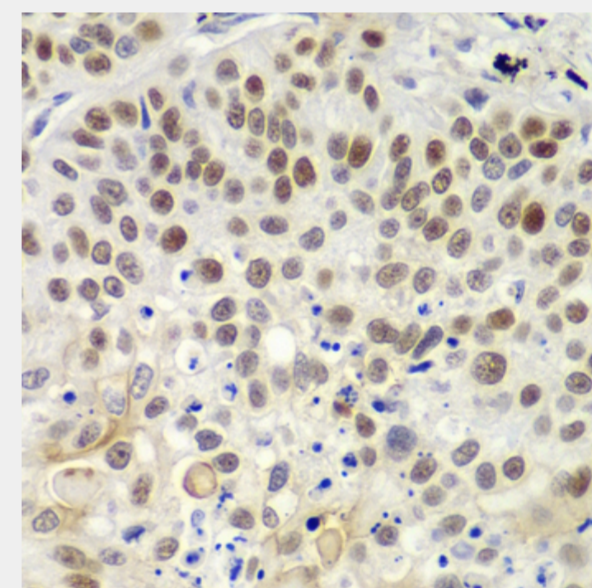
P52701

Product Description

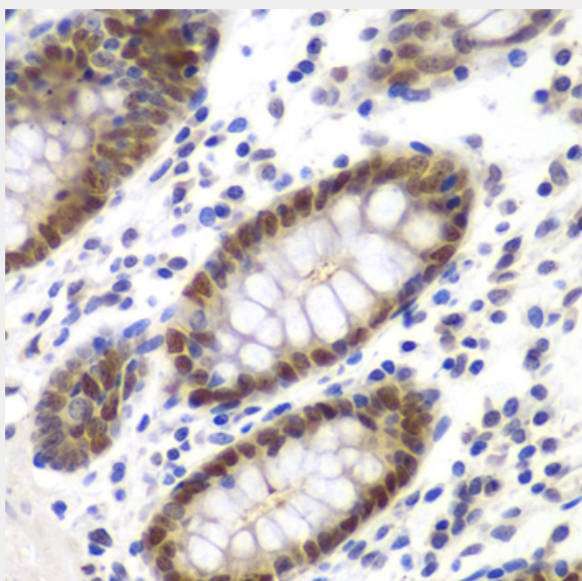
This gene encodes a member of the DNA mismatch repair MutS family. In *E. coli*, the MutS protein helps in the recognition of mismatched nucleotides prior to their repair. A highly conserved region of approximately 150 aa, called the Walker-A adenine nucleotide binding motif, exists in MutS homologs. The encoded protein heterodimerizes with MSH2 to form a mismatch recognition complex that functions as a bidirectional molecular switch that exchanges ADP and ATP as DNA mismatches are bound and dissociated. Mutations in this gene may be associated with hereditary nonpolyposis colon cancer, colorectal cancer, and endometrial cancer. Transcripts variants encoding different isoforms have been described.



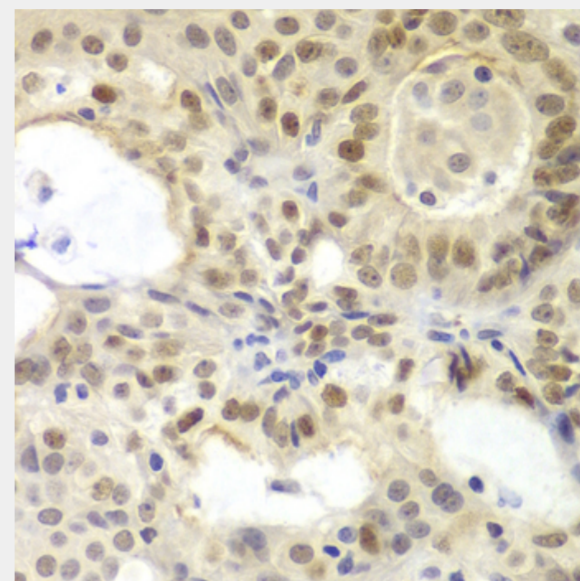
Western blot analysis of extracts of various cell lines, using MSH6 antibody at 1:500 dilution. Secondary antibody: HRP Goat Anti-Rabbit IgG (H+L) at 1:10000 dilution. Lysates/proteins: 25ug per lane. Blocking buffer: 3% nonfat dry milk in TBST.



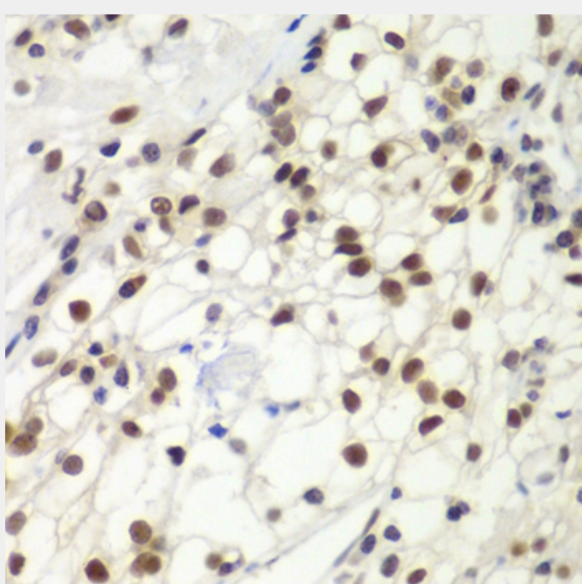
Immunohistochemistry of paraffin-embedded human lung cancer using MSH6 antibody at dilution of 1:100 (40x lens).



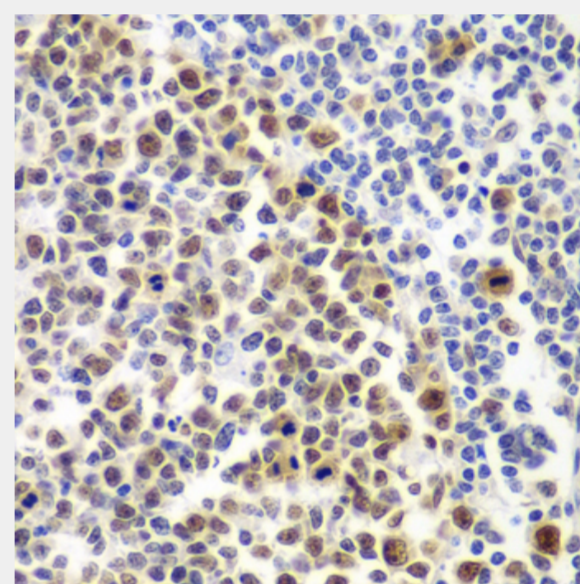
Immunohistochemistry of paraffin-embedded human colon using MSH6 antibody at dilution of 1:100 (40x lens).



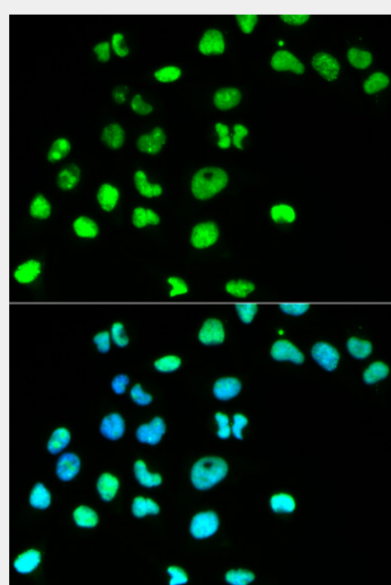
Immunohistochemistry of paraffin-embedded human oophoroma using MSH6 antibody at dilution of 1:100 (40x lens).



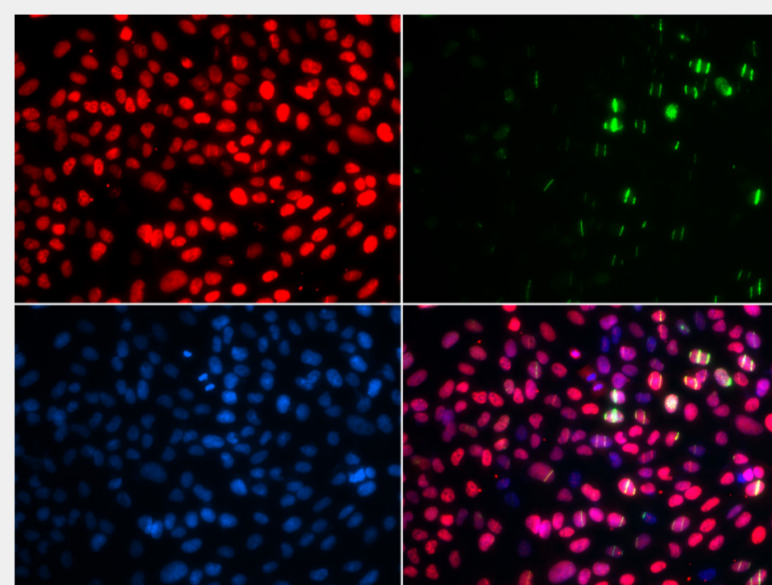
Immunohistochemistry of paraffin-embedded human kidney cancer using MSH6 antibody at dilution of 1:100 (40x lens).



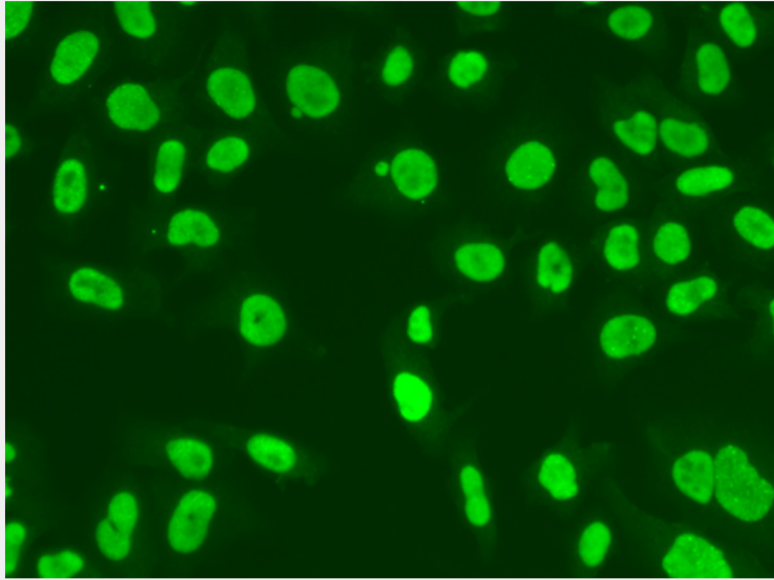
Immunohistochemistry of paraffin-embedded human amygdalitis using MSH6 antibody at dilution of 1:100 (40x lens).



Immunofluorescence analysis of HeLa cells using MSH6 antibody. Blue: DAPI for nuclear staining.



Immunofluorescence analysis of GFP-RNF168 transgenic U2OS cells using MSH6 antibody. Green: GFP-RNF168 fusion protein expression for DNA damage marker. Blue: DAPI for nuclear staining. RNF168(GFP) can be used to mark cells damaged by UV-A laser for they always gather around DNA damage region.



Immunofluorescence analysis of A549 cells using MSH6 antibody.

All products are for RESEARCH USE ONLY. Not for diagnostic & therapeutic purposes!