

Anti MDM2 Antibody

Catalog No: tcsa17371



Available Sizes

Size: 100µl



Specifications

Application:

WB, IHC, IF

Species Reactivity:

Human, Mouse, Rat

Host Species:

Rabbit

Immunogen / Amino acids:

A synthetic peptide of human MDM2

Conjugation:

Unconjugated

Clonality:

Polyclonal

Isotype:

IgG

Form:

Liquid

Storage Buffer:

PBS with 0.02% sodium azide, 50% glycerol, pH7.3.

Recommended Dilution:

WB 1:500 - 1:2000

IHC 1:50 - 1:200

IF 1:50 - 1:200

Storage Instruction:

Store at -20C. Avoid freeze / thaw cycles.

Alternative Names:

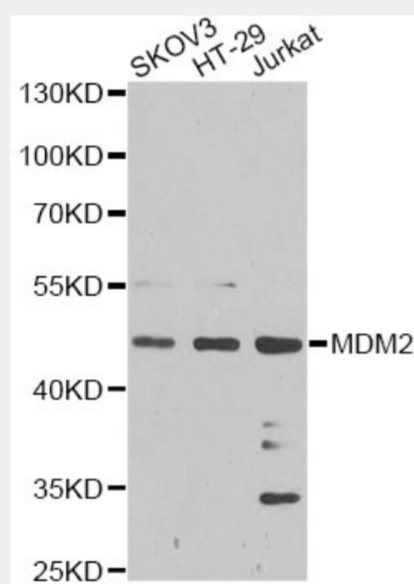
MDM2 antibody; E3 ubiquitin-protein ligase Mdm2 antibody; MDM2 antibody

SwissProt:

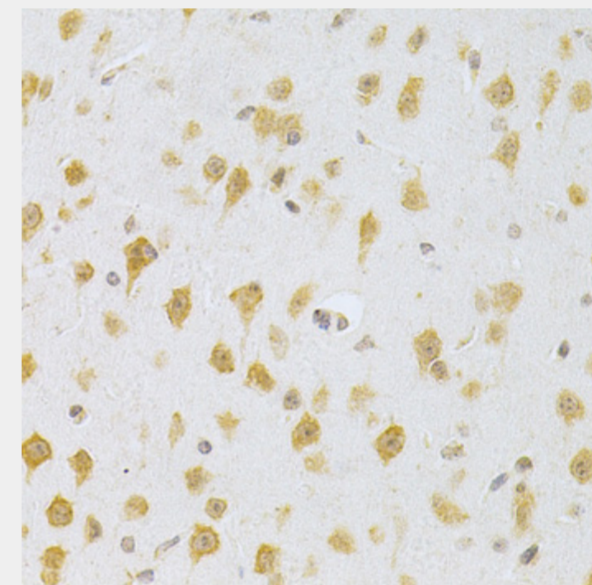
Q00987

Product Description

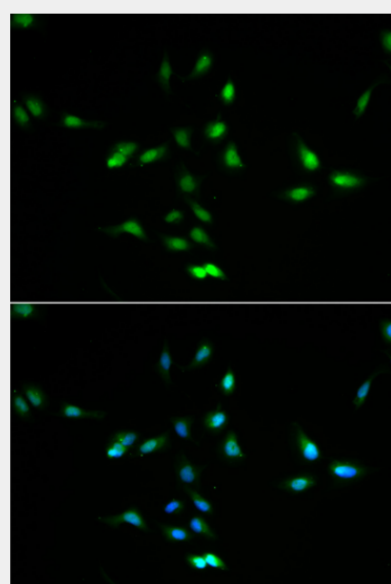
This gene encodes a nuclear-localized E3 ubiquitin ligase. The encoded protein can promote tumor formation by targeting tumor suppressor proteins, such as p53, for proteasomal degradation. This gene is itself transcriptionally-regulated by p53. Overexpression or amplification of this locus is detected in a variety of different cancers. There is a pseudogene for this gene on chromosome 2. Alternative splicing results in a multitude of transcript variants, many of which may be expressed only in tumor cells.



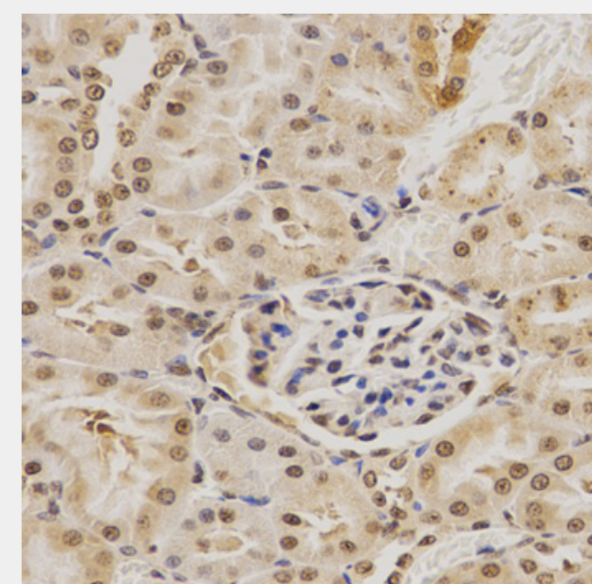
Western blot analysis of extracts of various cell lines, using MDM2 antibody at 1:1000 dilution. Secondary antibody: HRP Goat Anti-Rabbit IgG (H+L) at 1:10000 dilution. Lysates/proteins: 25ug per lane. Blocking buffer: 3% nonfat dry milk in TBST. Detection: ECL Basic Kit. Exposure time: 90s.



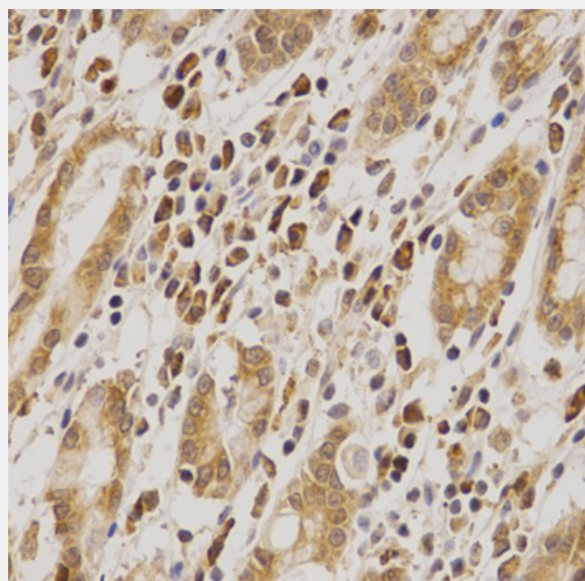
Immunohistochemistry of paraffin-embedded mouse brain using MDM2 Antibody at dilution of 1:200 (40x lens).



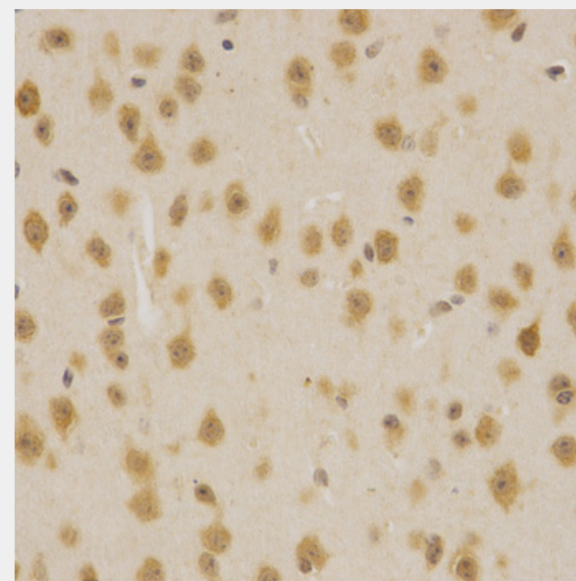
Immunofluorescence analysis of A549 cells using MDM2 antibody. Blue: DAPI for nuclear staining.



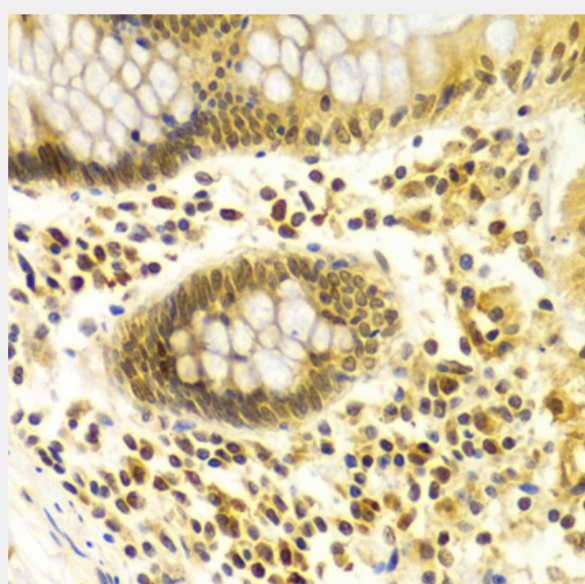
Immunohistochemistry of paraffin-embedded rat kidney using MDM2 Antibody at dilution of 1:200 (40x lens).



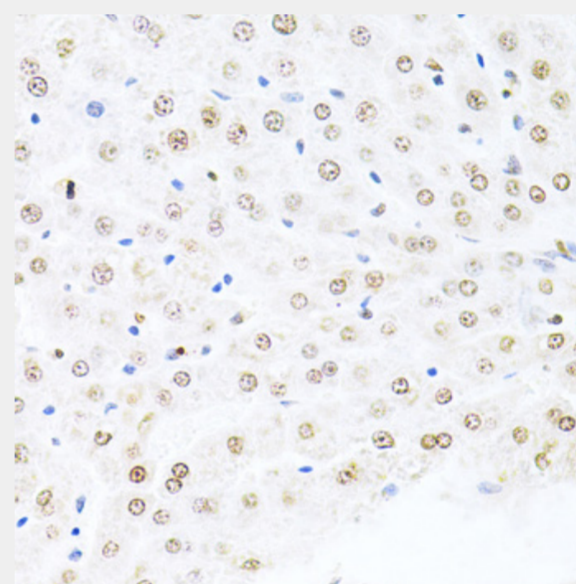
Immunohistochemistry of paraffin-embedded human stomach using MDM2 Antibody at dilution of 1:200 (40x lens).



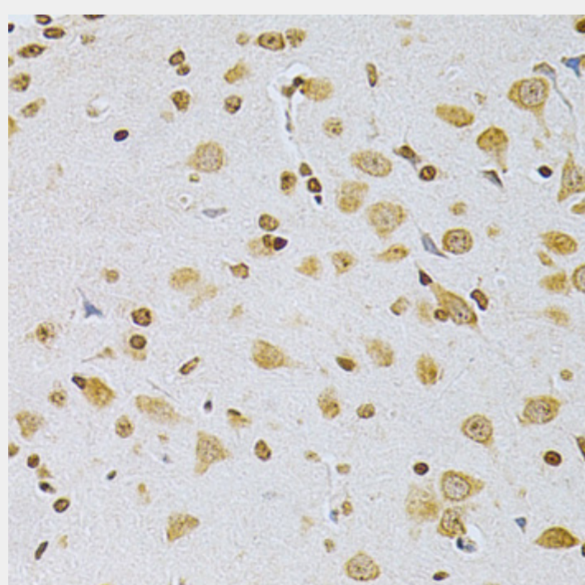
Immunohistochemistry of paraffin-embedded mouse brain using MDM2 Antibody at dilution of 1:200 (40x lens).



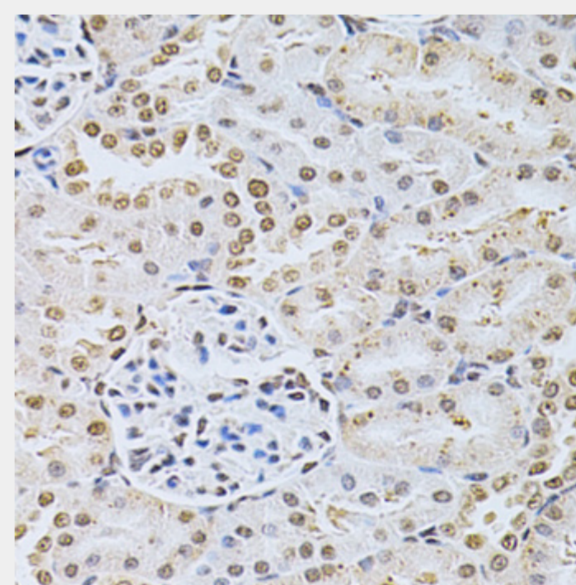
Immunohistochemistry of paraffin-embedded human colon using MDM2 Antibody at dilution of 1:100 (40x lens).



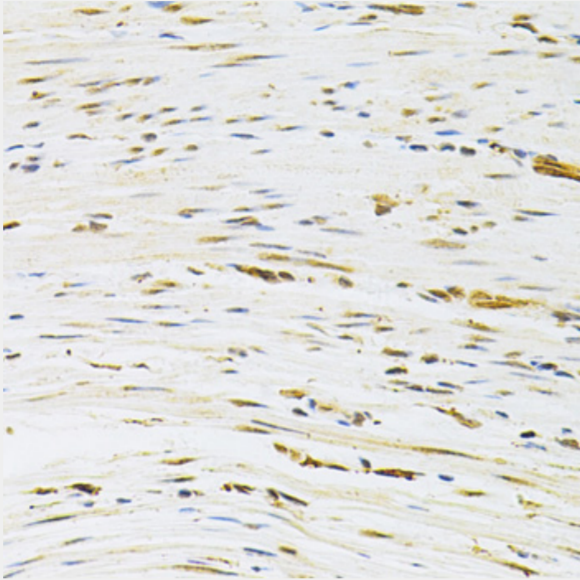
Immunohistochemistry of paraffin-embedded rat liver using MDM2 Antibody at dilution of 1:200 (40x lens).



Immunohistochemistry of paraffin-embedded rat brain using MDM2 Antibody at dilution of 1:200 (40x lens).



Immunohistochemistry of paraffin-embedded rat kidney using MDM2 Antibody at dilution of 1:200 (40x lens).



Immunohistochemistry of paraffin-embedded human colon carcinoma using MDM2 Antibody at dilution of 1:200 (40x lens).

All products are for RESEARCH USE ONLY. Not for diagnostic & therapeutic purposes!