

# Anti LGALS3 Antibody

Catalog No: tcsa17282



## Available Sizes

---

**Size:** 100μl



## Specifications

---

**Application:**

IHC, IF

**Species Reactivity:**

Human, Mouse, Rat

**Host Species:**

Rabbit

**Immunogen / Amino acids:**

Recombinant protein of human LGALS3

**Conjugation:**

Unconjugated

**Clonality:**

Polyclonal

**Isotype:**

IgG

**Form:**

Liquid

**Storage Buffer:**

PBS with 0.02% sodium azide, 50% glycerol, pH7.3.

**Recommended Dilution:**

IHC 1:50 - 1:200

IF 1:20 - 1:50

**Storage Instruction:**

Store at -20C. Avoid freeze / thaw cycles.

**Alternative Names:**

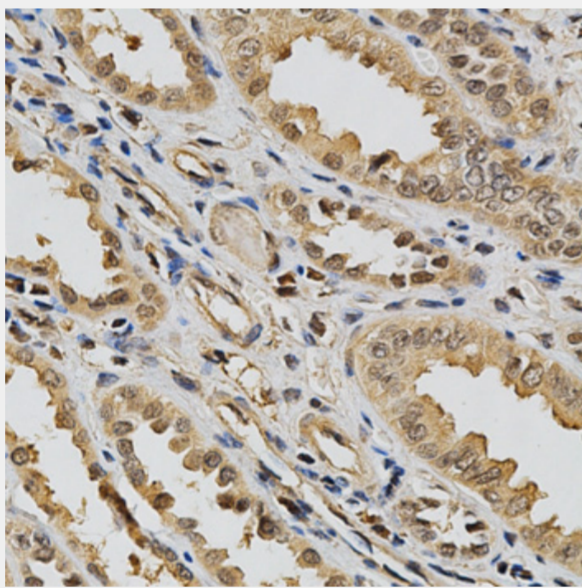
LGALS3 antibody; Galectin-3 antibody; Gal-3 antibody; 35 kDa lectin antibody; Carbohydrate-binding protein 35 antibody; CBP 35 antibody; Galactose-specific lectin 3 antibody; Galactoside-binding protein antibody; GALBP antibody

**SwissProt:**

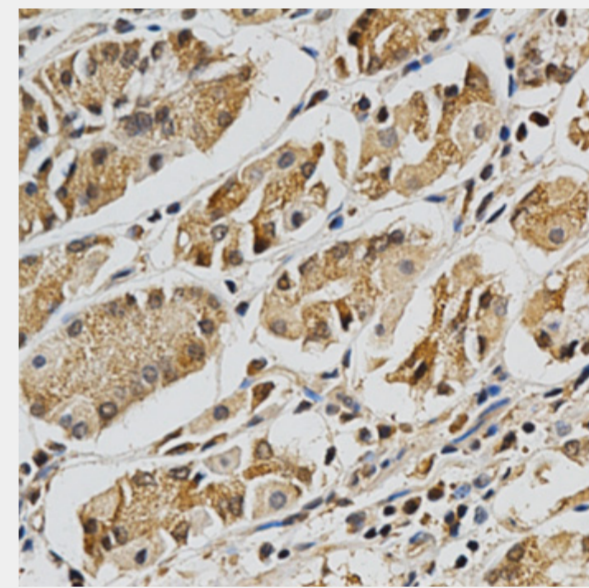
P17931

**Product Description**

This gene encodes a member of the galectin family of carbohydrate binding proteins. Members of this protein family have an affinity for beta-galactosides. The encoded protein is characterized by an N-terminal proline-rich tandem repeat domain and a single C-terminal carbohydrate recognition domain. This protein can self-associate through the N-terminal domain allowing it to bind to multivalent saccharide ligands. This protein localizes to the extracellular matrix, the cytoplasm and the nucleus. This protein plays a role in numerous cellular functions including apoptosis, innate immunity, cell adhesion and T-cell regulation. The protein exhibits antimicrobial activity against bacteria and fungi. Alternate splicing results in multiple transcript variants.

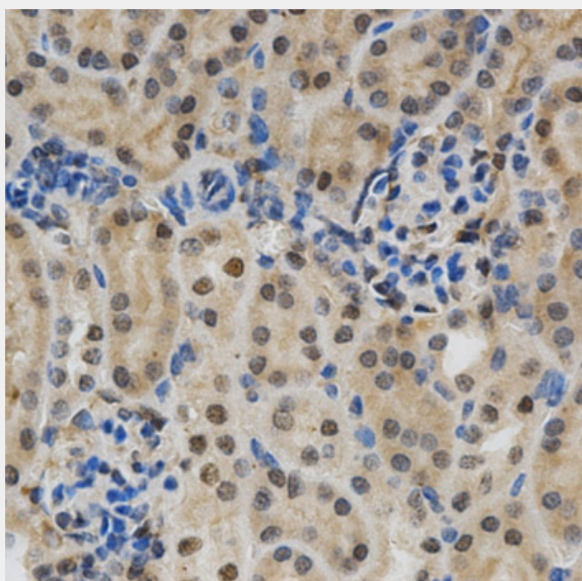


Immunohistochemistry of paraffin-embedded human kidney using LGALS3 Antibody at dilution of 1:200 (40x lens).

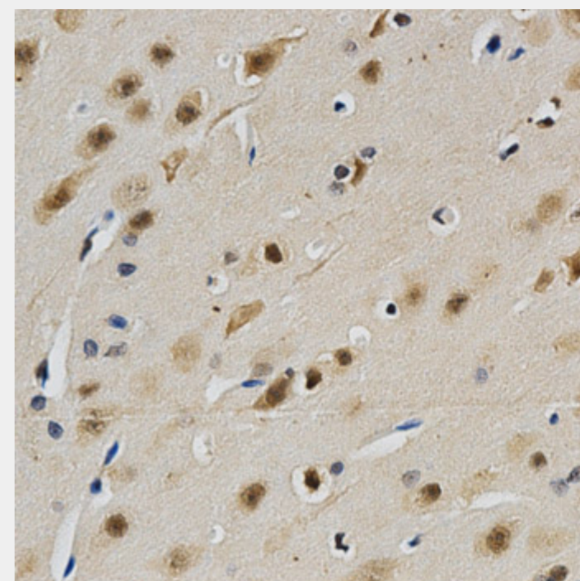


Immunohistochemistry of paraffin-embedded human stomach using LGALS3 Antibody at dilution of 1:200 (40x lens).

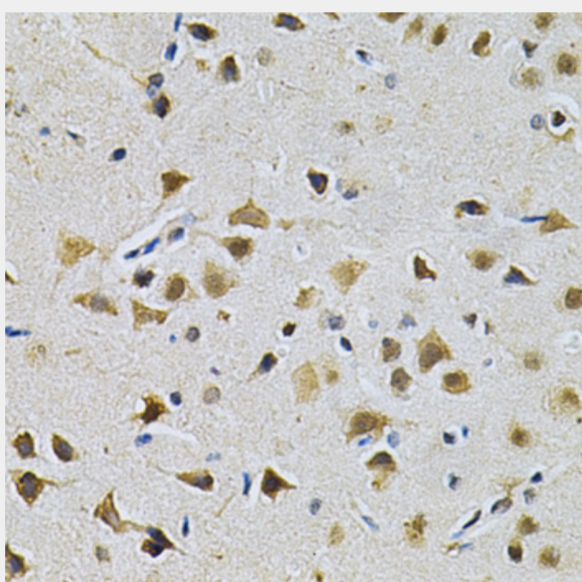




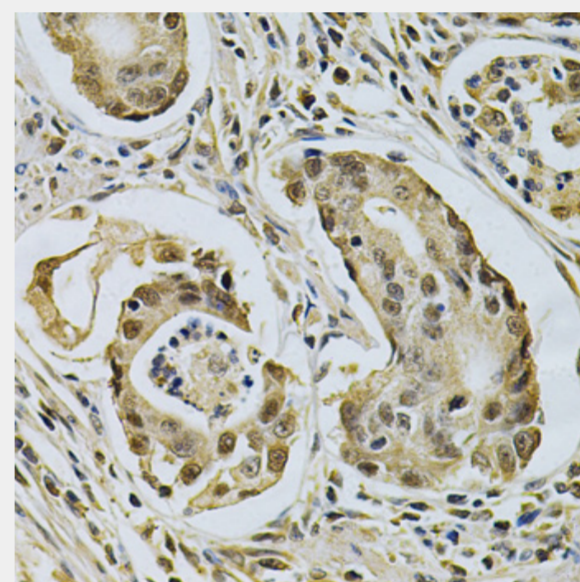
Immunohistochemistry of paraffin-embedded mouse kidney using LGALS3 Antibody at dilution of 1:200 (40x lens).



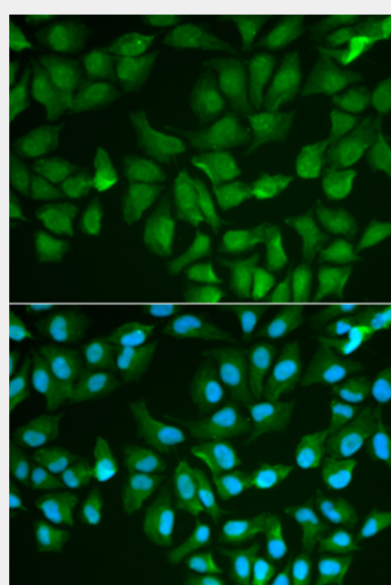
Immunohistochemistry of paraffin-embedded rat brain using LGALS3 Antibody at dilution of 1:200 (40x lens).



Immunohistochemistry of paraffin-embedded rat brain using LGALS3 Antibody at dilution of 1:200 (40x lens).



Immunohistochemistry of paraffin-embedded human gastric cancer using LGALS3 Antibody at dilution of 1:200 (40x lens).



Immunofluorescence analysis of MCF-7 cells using LGALS3 antibody. Blue: DAPI for nuclear staining.

All products are for RESEARCH USE ONLY. Not for diagnostic & therapeutic purposes!