

# Anti KRT20 Antibody

Catalog No: tcsa17255



## Available Sizes

---

**Size:** 100µl



## Specifications

---

**Application:**

WB, IHC, IF

**Species Reactivity:**

Human, Mouse, Rat

**Host Species:**

Rabbit

**Immunogen / Amino acids:**

Recombinant protein of human KRT20

**Conjugation:**

Unconjugated

**Clonality:**

Polyclonal

**Isotype:**

IgG

**Form:**

Liquid

**Storage Buffer:**

PBS with 0.02% sodium azide, 50% glycerol, pH7.3.

**Recommended Dilution:**

WB 1:500 - 1:2000

IHC 1:50 - 1:200

IF 1:50 - 1:200

**Storage Instruction:**

Store at -20C. Avoid freeze / thaw cycles.

**Alternative Names:**

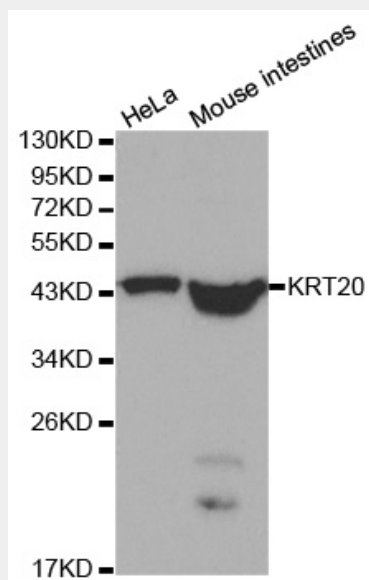
KRT20 antibody; Keratin antibody; type I cytoskeletal 20 antibody; Cytokeratin-20 antibody; CK-20 antibody; Keratin-20 antibody; K20 antibody; Protein IT antibody; KRT20 antibody

**SwissProt:**

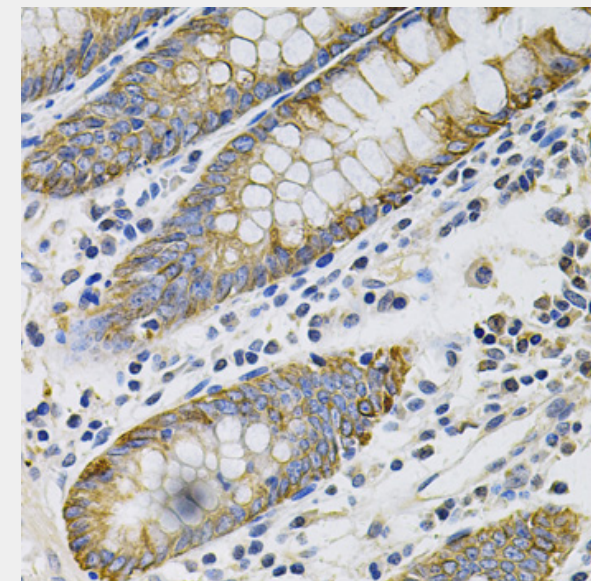
P35900

**Product Description**

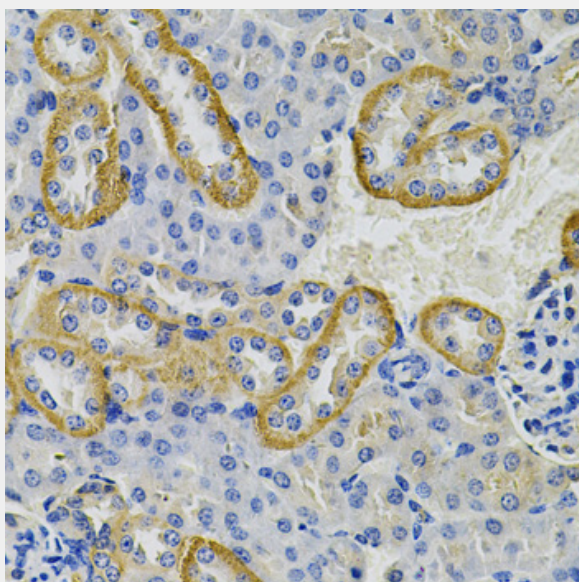
The protein encoded by this gene is a member of the keratin family. The keratins are intermediate filament proteins responsible for the structural integrity of epithelial cells and are subdivided into cytokeratins and hair keratins. The type I cytokeratins consist of acidic proteins which are arranged in pairs of heterotypic keratin chains. This cytokeratin is a major cellular protein of mature enterocytes and goblet cells and is specifically expressed in the gastric and intestinal mucosa. The type I cytokeratin genes are clustered in a region of chromosome 17q12-q21.



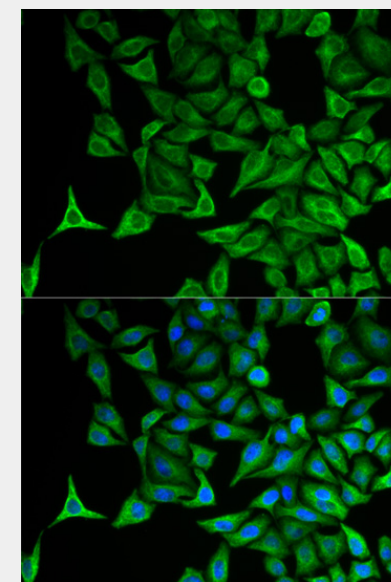
Western blot analysis of extracts of various cell lines, using KRT20 antibody at 1:1000 dilution. Secondary antibody: HRP Goat Anti-Rabbit IgG (H+L) at 1:10000 dilution. Lysates/proteins: 25ug per lane. Blocking buffer: 3% nonfat dry milk in TBST.



Immunohistochemistry of paraffin-embedded human colon using KRT20 Antibody at dilution of 1:100 (40x lens).

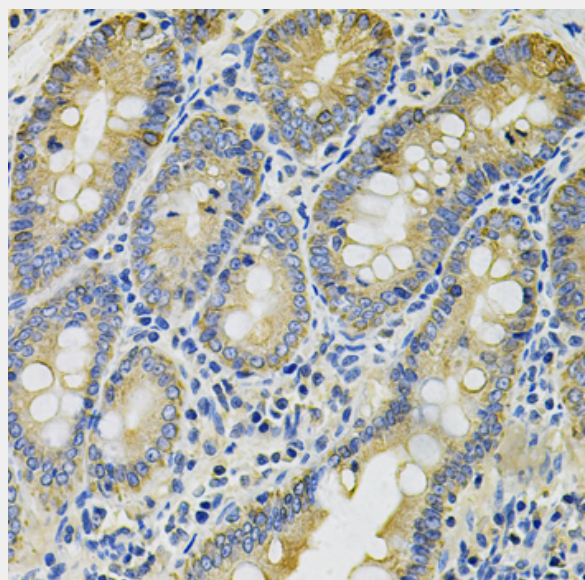


Immunohistochemistry of paraffin-embedded mouse kidney using KRT20 Antibody at dilution of 1:100 (40x lens).

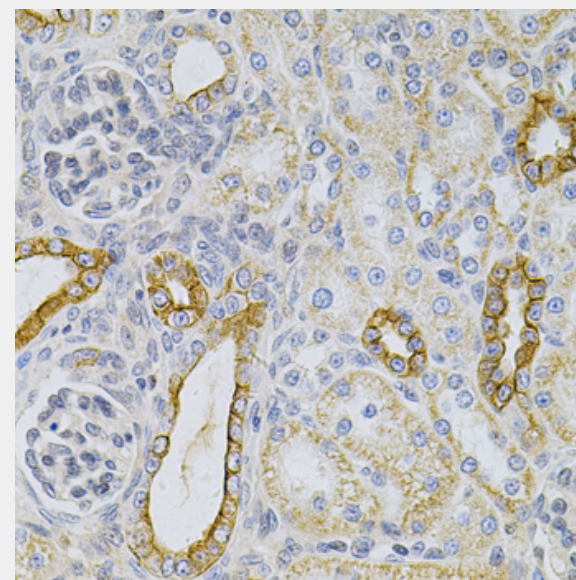


Immunofluorescence analysis of HeLa cells using KRT20 antibody. Blue: DAPI for nuclear staining.

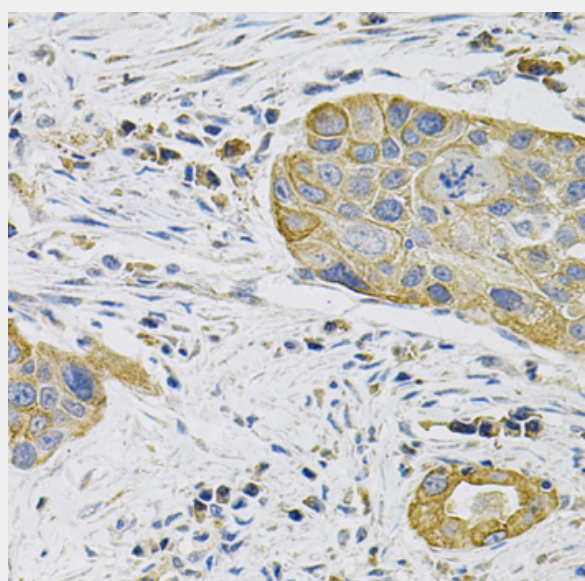




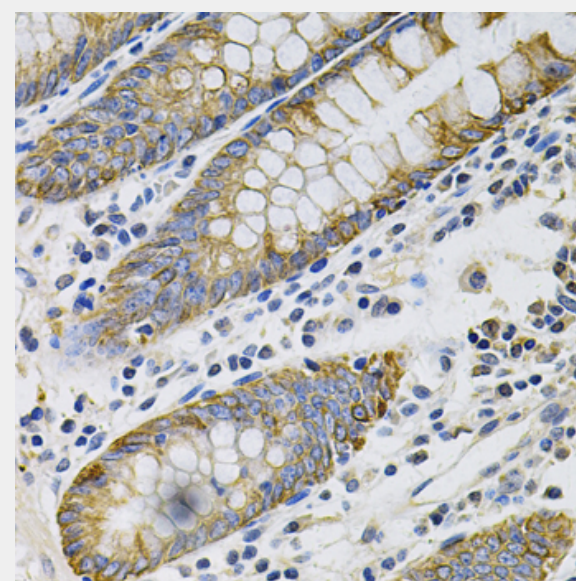
Immunohistochemistry of paraffin-embedded rat intestine using KRT20 Antibody at dilution of 1:100 (40x lens).



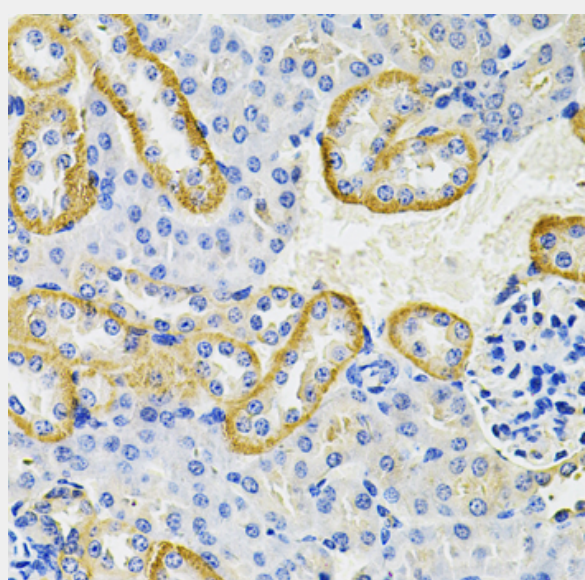
Immunohistochemistry of paraffin-embedded rat kidney using KRT20 Antibody at dilution of 1:100 (40x lens).



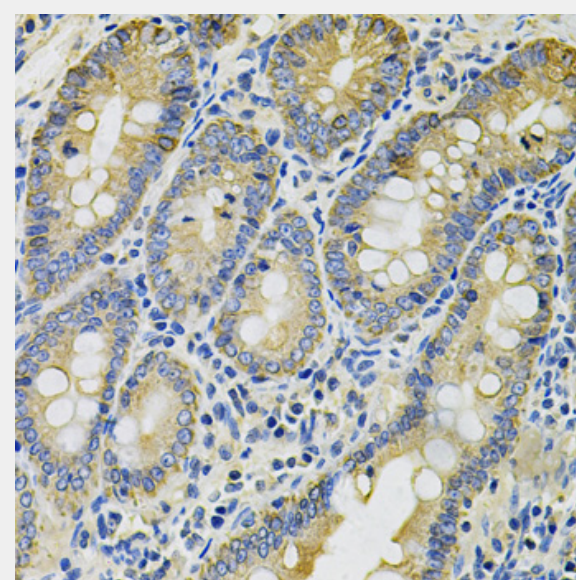
Immunohistochemistry of paraffin-embedded human lung cancer using KRT20 Antibody at dilution of 1:100 (40x lens).



Immunohistochemistry of paraffin-embedded human colon using KRT20 Antibody at dilution of 1:100 (40x lens).

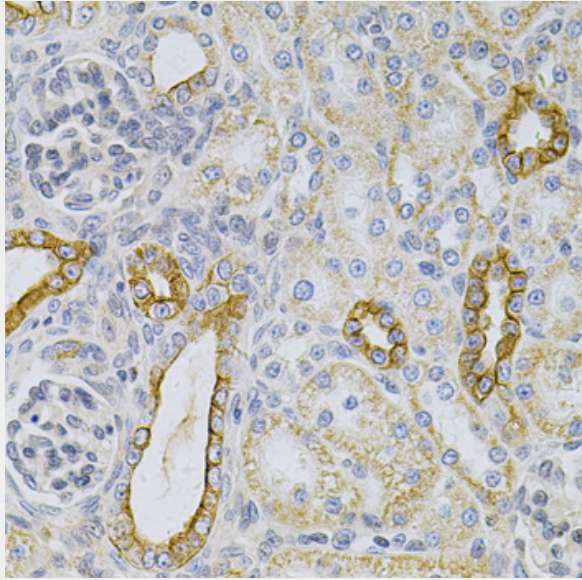


Immunohistochemistry of paraffin-embedded mouse kidney using KRT20 Antibody at dilution of 1:100 (40x lens).

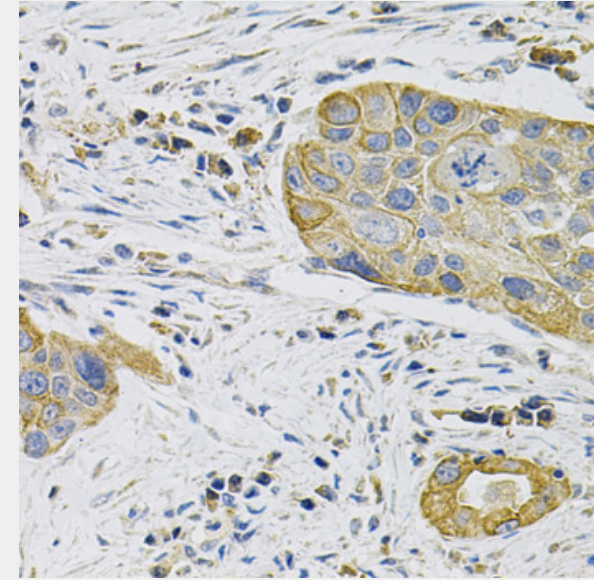


Immunohistochemistry of paraffin-embedded rat intestine using KRT20 Antibody at dilution of 1:100 (40x lens).





Immunohistochemistry of paraffin-embedded rat kidney using KRT20 Antibody at dilution of 1:100 (40x lens).



Immunohistochemistry of paraffin-embedded human lung cancer using KRT20 Antibody at dilution of 1:100 (40x lens).

All products are for RESEARCH USE ONLY. Not for diagnostic & therapeutic purposes!