

# Anti KPNA4 Antibody

Catalog No: tcsa17246



## Available Sizes

---

**Size:** 100μl

---



## Specifications

---

**Application:**

WB, IHC, IF

---

**Species Reactivity:**

Human, Mouse, Rat

---

**Host Species:**

Rabbit

---

**Immunogen / Amino acids:**

Recombinant protein of human KPNA4

---

**Conjugation:**

Unconjugated

---

**Clonality:**

Polyclonal

---

**Isotype:**

IgG

---

**Form:**

Liquid

---

**Storage Buffer:**

PBS with 0.02% sodium azide, 50% glycerol, pH7.3.

---

**Recommended Dilution:**

WB 1:500 - 1:2000

IHC 1:50 - 1:200

IF 1:50 - 1:200

---

**Storage Instruction:**

Store at -20C. Avoid freeze / thaw cycles.

**Alternative Names:**

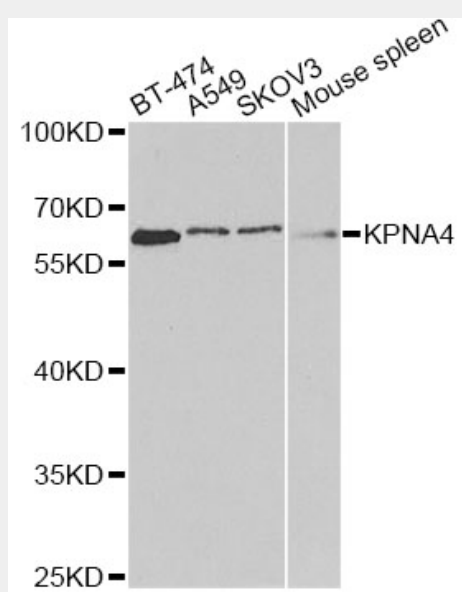
KPNA4 antibody; Importin subunit alpha-3 antibody; Importin alpha Q1 antibody; Qip1 antibody; Karyopherin subunit alpha-4 antibody; KPNA4 antibody; QIP1 antibody

**SwissProt:**

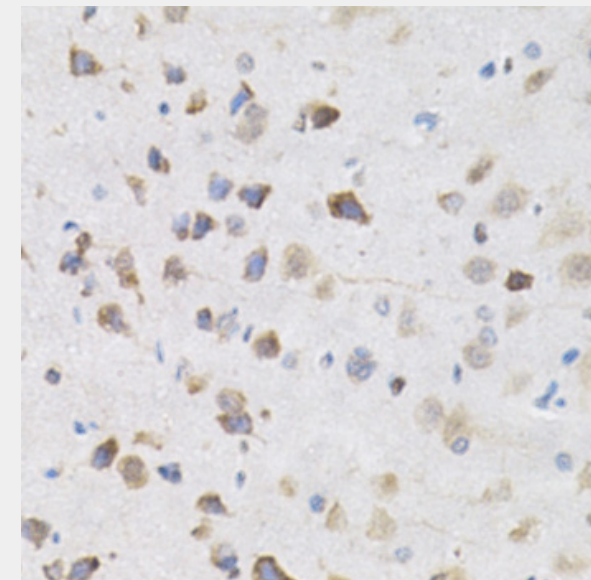
O00629

**Product Description**

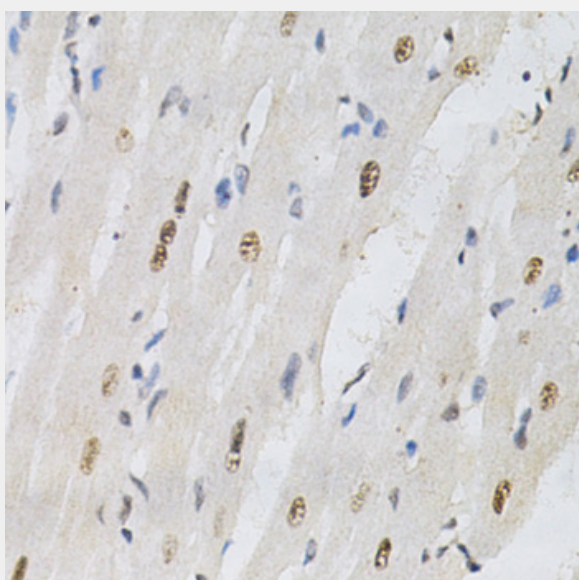
The nuclear import of karyophilic proteins is directed by short amino acid sequences termed nuclear localization signals (NLSs). Karyopherins, or importins, are cytoplasmic proteins that recognize NLSs and dock NLS-containing proteins to the nuclear pore complex. The protein encoded by this gene shares the sequence similarity with *Xenopus* importin-alpha and *Saccharomyces cerevisiae* Srp1. This protein is found to interact with the NLSs of DNA helicase Q1 and SV40 T antigen.



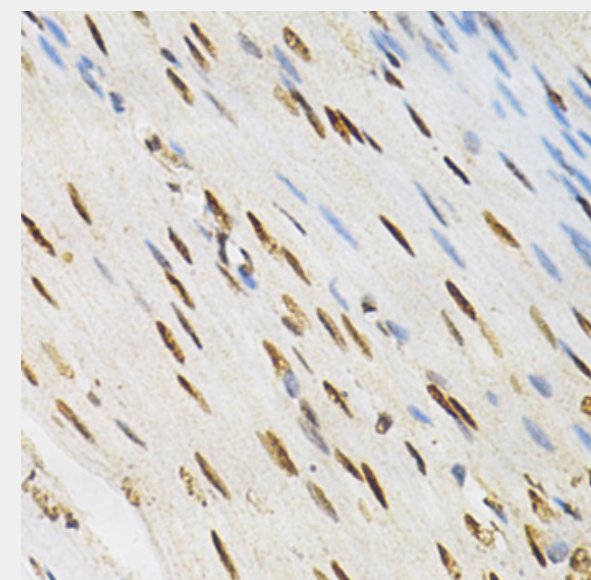
Western blot analysis of extracts of various cell lines, using KPNA4 antibody at 1:1000 dilution. Secondary antibody: HRP Goat Anti-Rabbit IgG (H+L) at 1:10000 dilution. Lysates/proteins: 25ug per lane. Blocking buffer: 3% nonfat dry milk in TBST.



Immunohistochemistry of paraffin-embedded rat brain using KPNA4 Antibody at dilution of 1:200 (40x lens).

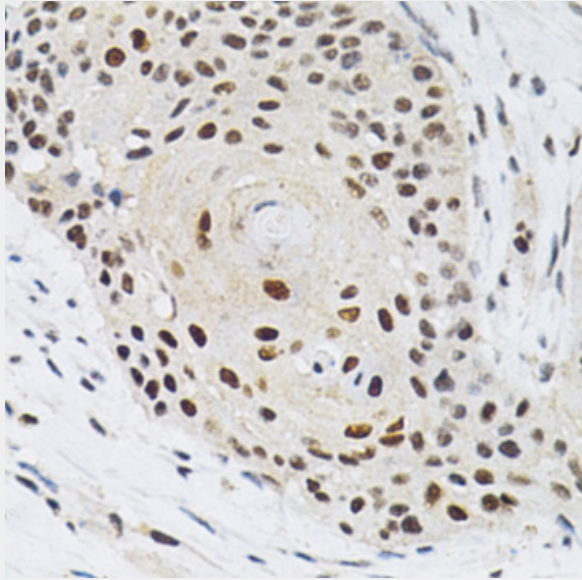


Immunohistochemistry of paraffin-embedded rat heart using KPNA4 Antibody at dilution of 1:200 (40x lens).

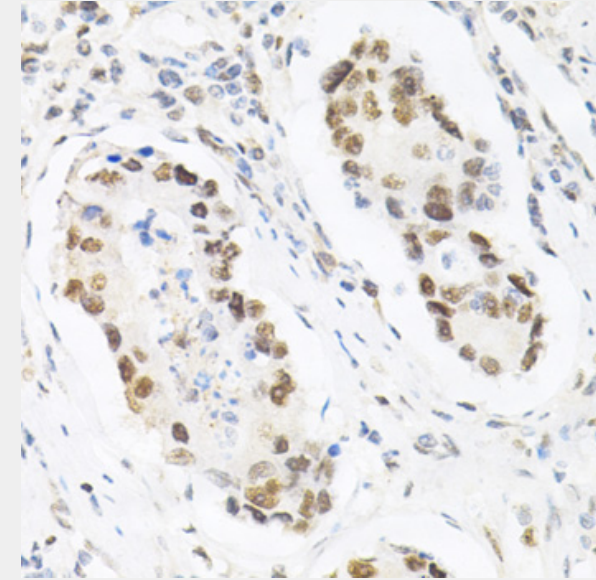


Immunohistochemistry of paraffin-embedded human colonic muscle using KPNA4 Antibody at dilution of 1:200 (40x lens).

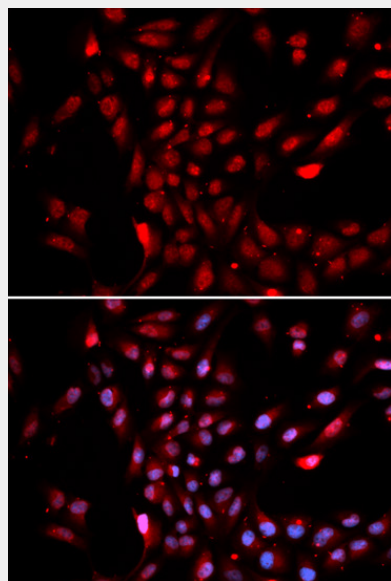




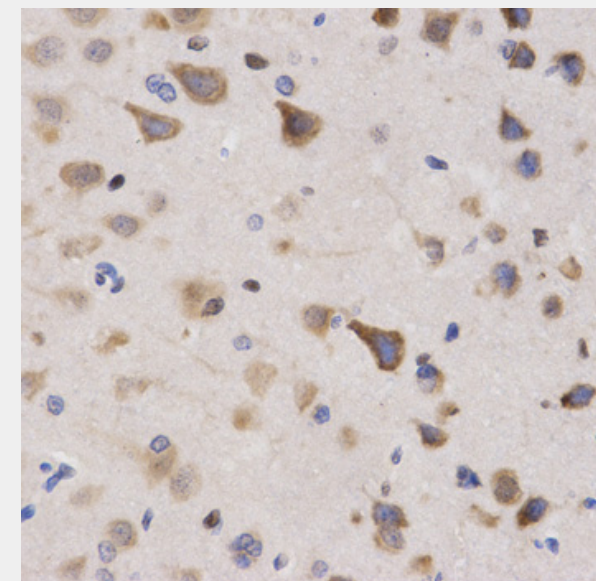
Immunohistochemistry of paraffin-embedded human esophageal cancer using KPNA4 Antibody at dilution of 1:200 (40x lens).



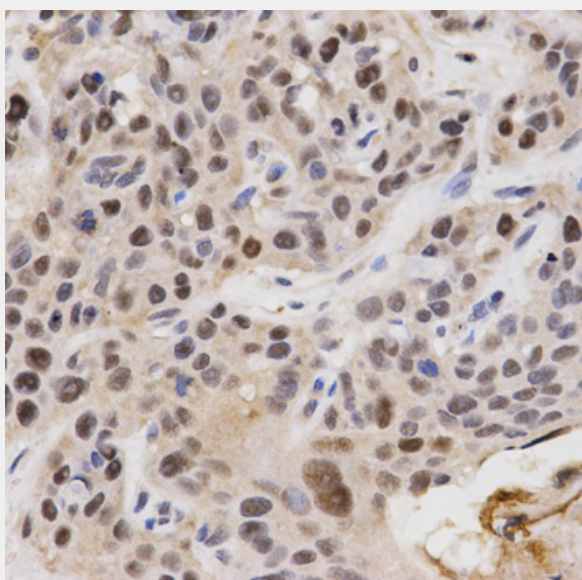
Immunohistochemistry of paraffin-embedded human gastric cancer using KPNA4 Antibody at dilution of 1:200 (40x lens).



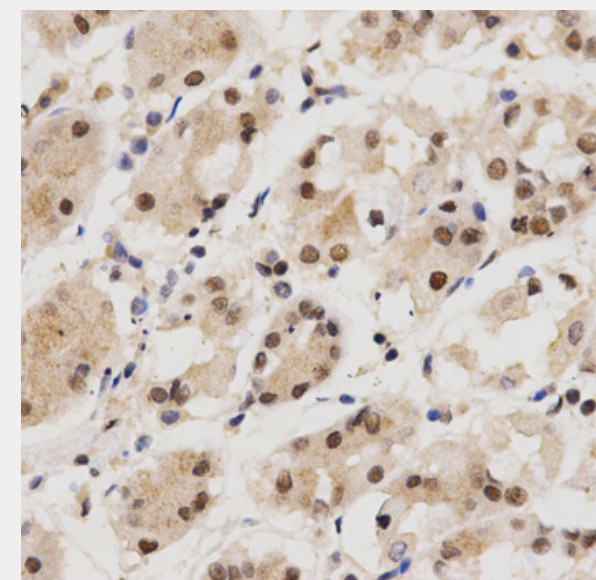
Immunofluorescence analysis of U2OS cells using KPNA4 antibody. Blue: DAPI for nuclear staining.



Immunohistochemistry of paraffin-embedded rat brain using KPNA4 Antibody at dilution of 1:200 (40x lens).

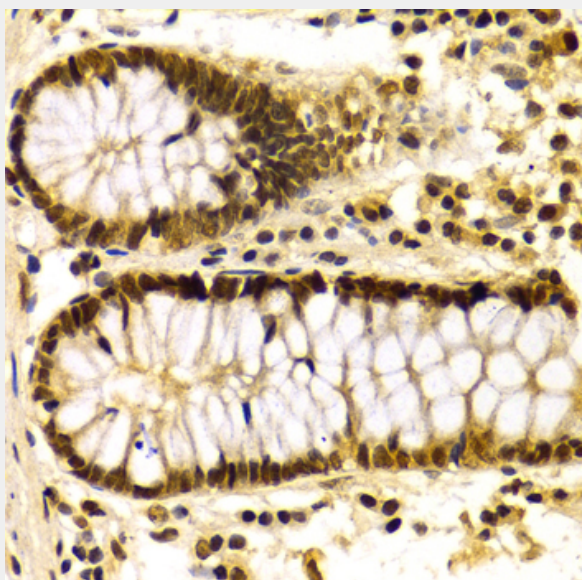


Immunohistochemistry of paraffin-embedded human esophageal cancer using KPNA4 Antibody at dilution of 1:200 (40x lens).

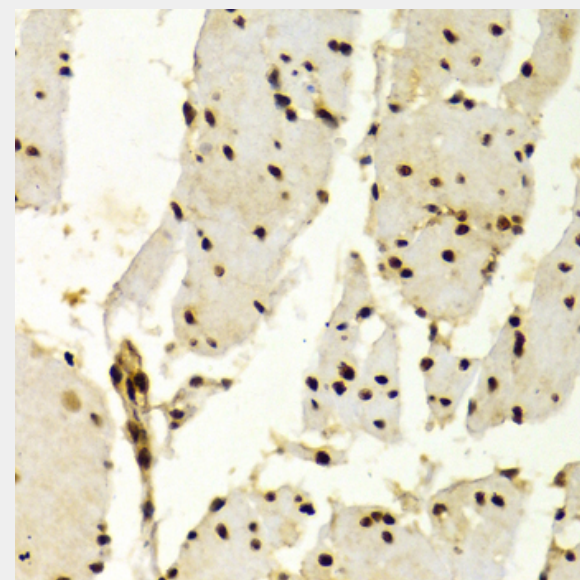


Immunohistochemistry of paraffin-embedded human stomach using KPNA4 Antibody at dilution of 1:200 (40x lens).

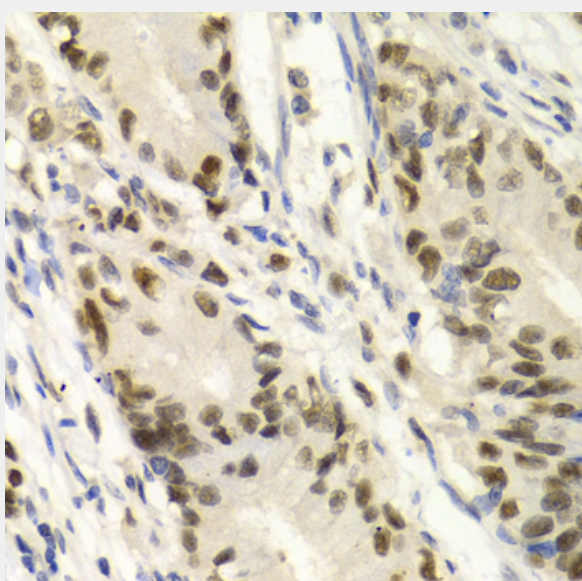




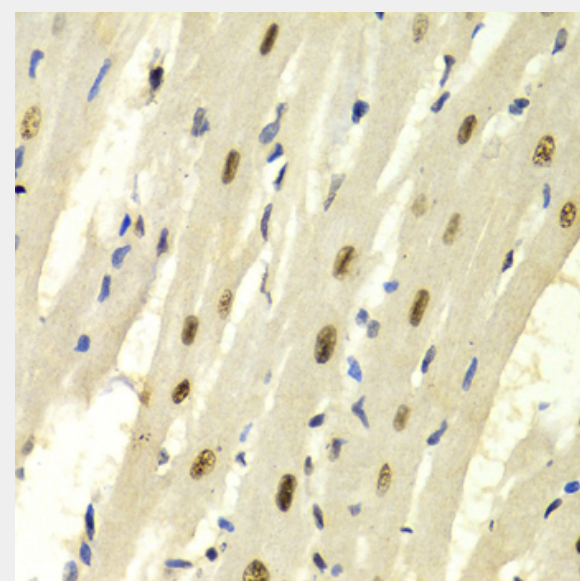
Immunohistochemistry of paraffin-embedded human colon using KPNA4 Antibody at dilution of 1:100 (40x lens).



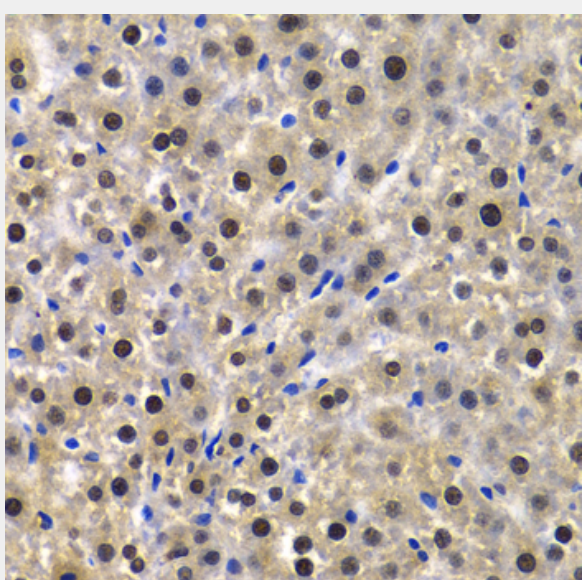
Immunohistochemistry of paraffin-embedded human esophagus using KPNA4 Antibody at dilution of 1:100 (40x lens).



Immunohistochemistry of paraffin-embedded human gastric cancer using KPNA4 Antibody at dilution of 1:100 (40x lens).



Immunohistochemistry of paraffin-embedded rat heart using KPNA4 Antibody at dilution of 1:100 (40x lens).



Immunohistochemistry of paraffin-embedded rat liver using KPNA4 Antibody at dilution of 1:100 (40x lens).

All products are for RESEARCH USE ONLY. Not for diagnostic & therapeutic purposes!