

# Anti IKBKG Antibody

Catalog No: tcsa17136



## Available Sizes

---

**Size:** 100μl



## Specifications

---

**Application:**

WB, IHC, IF

**Species Reactivity:**

Human, Mouse, Rat

**Host Species:**

Rabbit

**Immunogen / Amino acids:**

Recombinant protein of human IKBKG

**Conjugation:**

Unconjugated

**Clonality:**

Polyclonal

**Isotype:**

IgG

**Form:**

Liquid

**Storage Buffer:**

PBS with 0.02% sodium azide, 50% glycerol, pH7.3.

**Recommended Dilution:**

WB 1:500 - 1:2000

IHC 1:50 - 1:100

IF 1:50 - 1:200

**Storage Instruction:**

Store at -20C. Avoid freeze / thaw cycles.

**Alternative Names:**

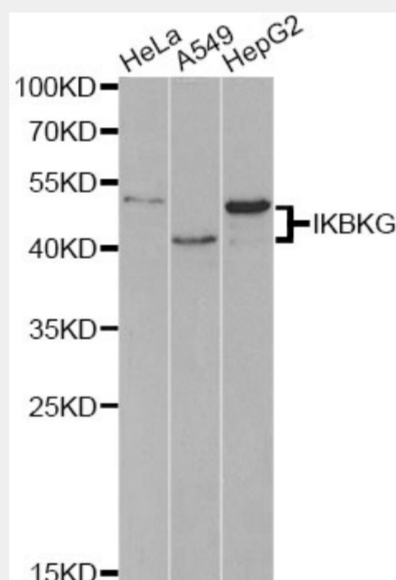
IKBKG antibody; NF-kappa-B essential modulator antibody; NEMO antibody; FIP-3 antibody; Ikb kinase-associated protein 1 antibody; IKKAP1 antibody; Inhibitor of nuclear factor kappa-B kinase subunit gamma antibody; I-kappa-B kinase sub

**SwissProt:**

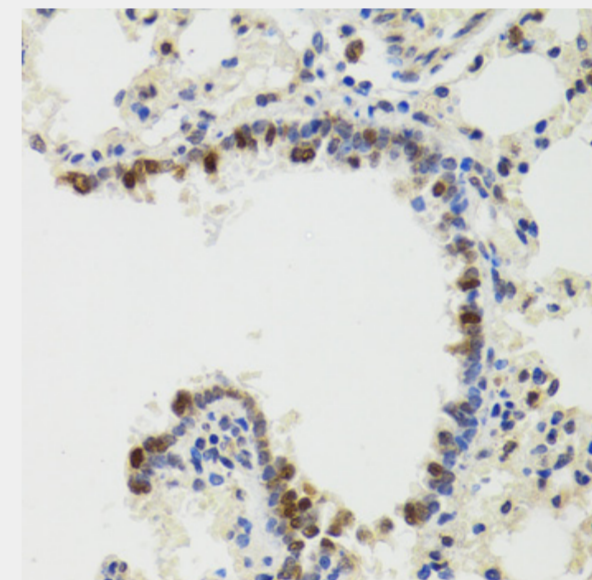
Q9Y6K9

**Product Description**

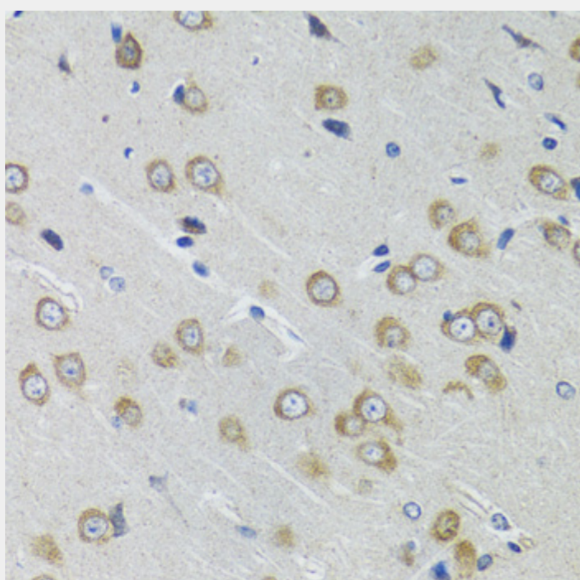
This gene encodes the regulatory subunit of the inhibitor of kappaB kinase (IKK) complex, which activates NF-kappaB resulting in activation of genes involved in inflammation, immunity, cell survival, and other pathways. Mutations in this gene result in incontinentia pigmenti, hypohidrotic ectodermal dysplasia, and several other types of immunodeficiencies. A pseudogene highly similar to this locus is located in an adjacent region of the X chromosome.



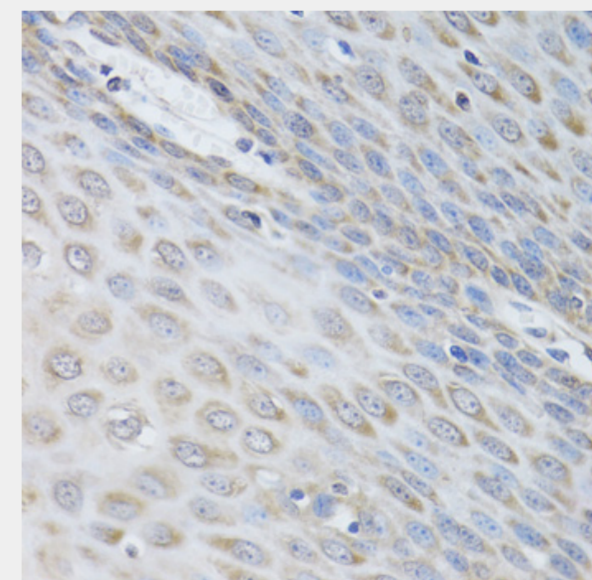
Western blot analysis of extracts of various cell lines, using IKBKG antibody at 1:1000 dilution. Secondary antibody: HRP Goat Anti-Rabbit IgG (H+L) at 1:10000 dilution. Lysates/proteins: 25ug per lane. Blocking buffer: 3% nonfat dry milk in TBST.



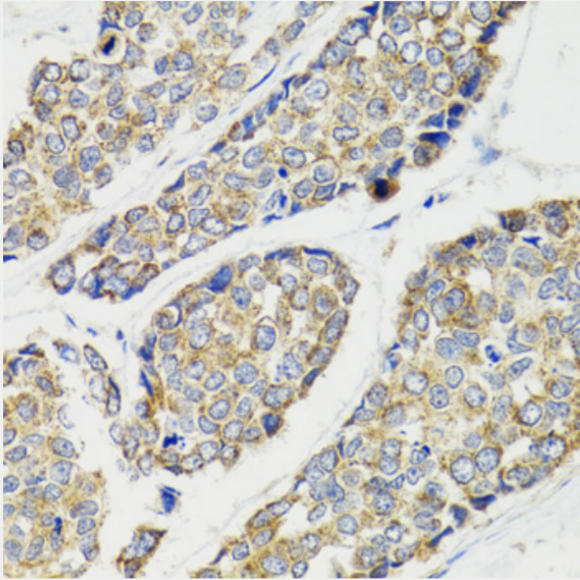
Immunohistochemistry of paraffin-embedded rat lung using IKBKG antibody at dilution of 1:100 (40x lens).



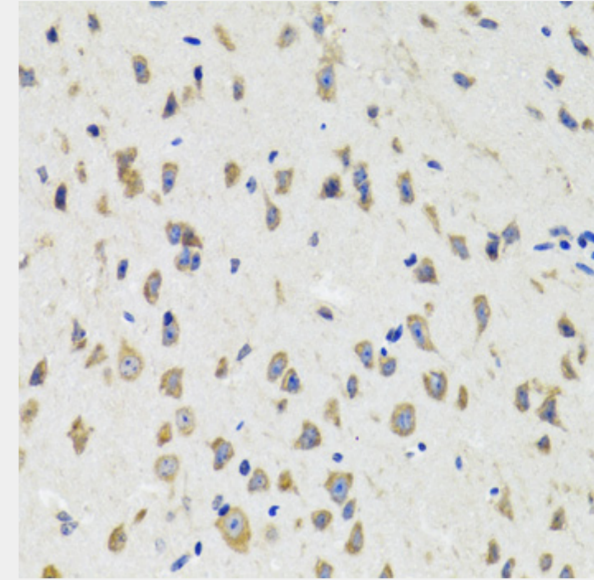
Immunohistochemistry of paraffin-embedded rat brain using IKBKG antibody at dilution of 1:100 (40x lens).



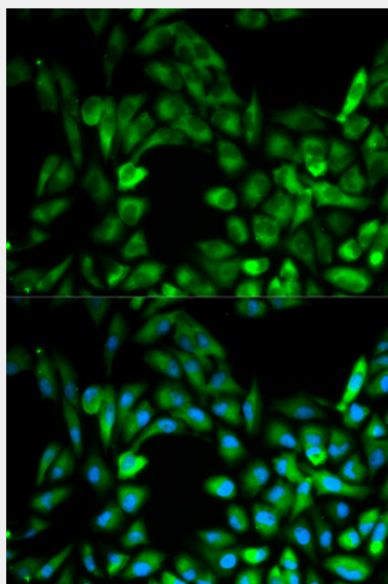
Immunohistochemistry of paraffin-embedded human esophagus using IKBKG antibody at dilution of 1:100 (40x lens).



Immunohistochemistry of paraffin-embedded human esophageal cancer using IKBKG antibody at dilution of 1:100 (40x lens).



Immunohistochemistry of paraffin-embedded mouse brain using IKBKG antibody at dilution of 1:100 (40x lens).



Immunofluorescence analysis of MCF-7 cells using IKBKG antibody. Blue: DAPI for nuclear staining.

All products are for RESEARCH USE ONLY. Not for diagnostic & therapeutic purposes!