

Anti HSPB8 Antibody

Catalog No: tcsa17095



Available Sizes

Size: 100μl



Specifications

Application:

WB, IHC, IF

Species Reactivity:

Human, Mouse, Rat

Host Species:

Rabbit

Immunogen / Amino acids:

Recombinant protein of human HSPB8

Conjugation:

Unconjugated

Clonality:

Polyclonal

Isotype:

IgG

Form:

Liquid

Storage Buffer:

PBS with 0.02% sodium azide, 50% glycerol, pH7.3.

Recommended Dilution:

WB 1:500 - 1:2000

IHC 1:50 - 1:200

IF 1:50 - 1:100

Storage Instruction:

Store at -20C. Avoid freeze / thaw cycles.

Alternative Names:

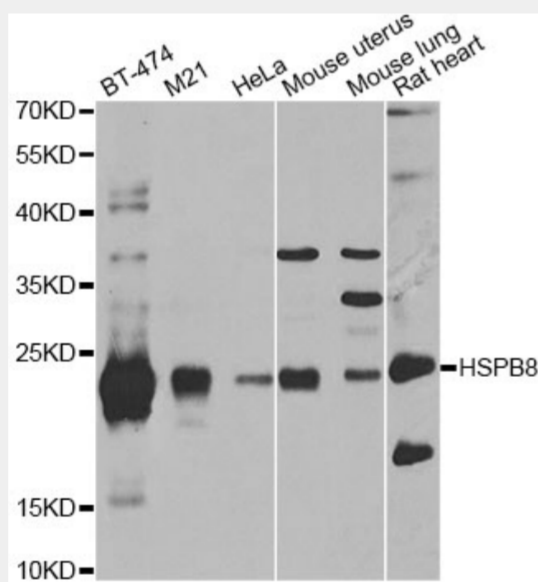
HSPB8 antibody; Heat shock protein beta-8 antibody; HspB8 antibody; Alpha-crystallin C chain antibody; E2-induced gene 1 protein antibody; Protein kinase H11 antibody; Small stress protein-like protein HSP22 antibody; HSPB8 antibody</p></div>

SwissProt:

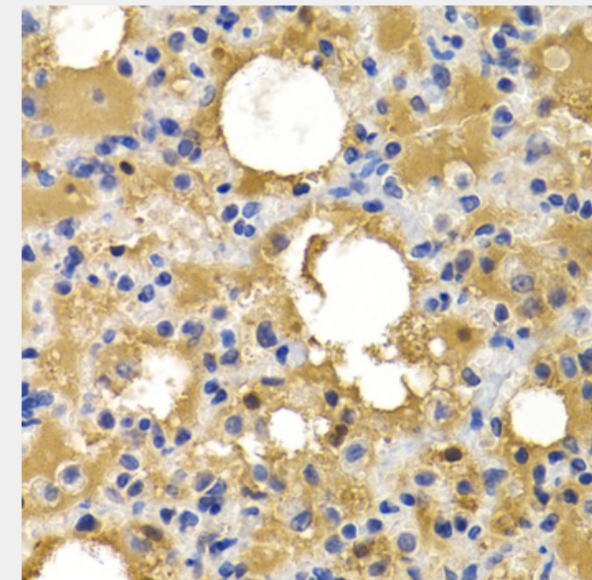
Q9UJY1

Product Description

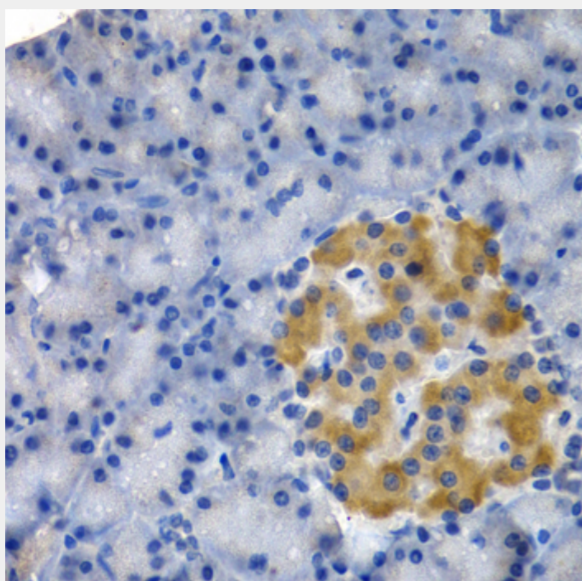
The protein encoded by this gene belongs to the superfamily of small heat-shock proteins containing a conservative alpha-crystallin domain at the C-terminal part of the molecule. The expression of this gene is induced by estrogen in estrogen receptor-positive breast cancer cells, and this protein also functions as a chaperone in association with Bag3, a stimulator of macroautophagy. Thus, this gene appears to be involved in regulation of cell proliferation, apoptosis, and carcinogenesis, and mutations in this gene have been associated with different neuromuscular diseases, including Charcot-Marie-Tooth disease.



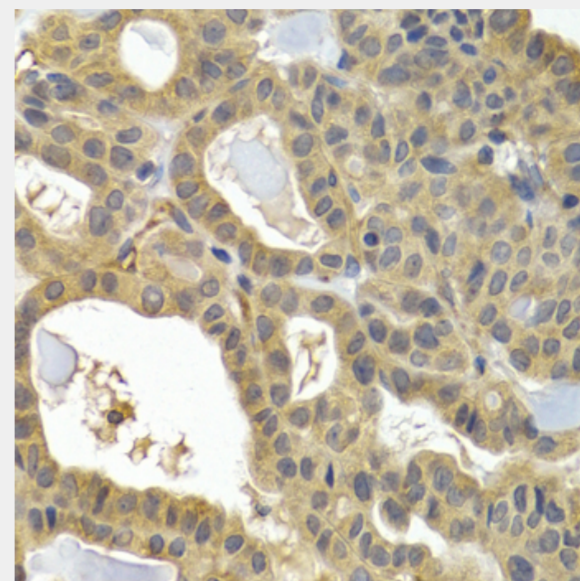
Western blot analysis of extracts of various cell lines, using HSPB8 antibody at 1:1000 dilution. Secondary antibody: HRP Goat Anti-Rabbit IgG (H+L) at 1:10000 dilution. Lysates/proteins: 25ug per lane. Blocking buffer: 3% nonfat dry milk in TBST. Detection: ECL Enhanced Kit. Exposure time: 10s.



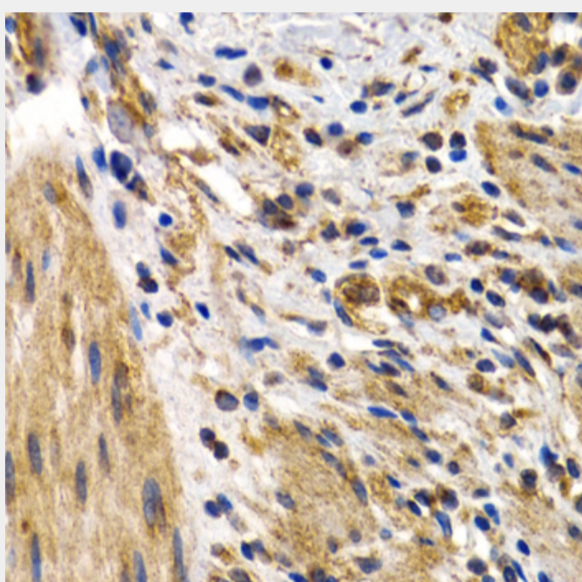
Immunohistochemistry of paraffin-embedded rat lung using HSPB8 antibody at dilution of 1:200 (40x lens).



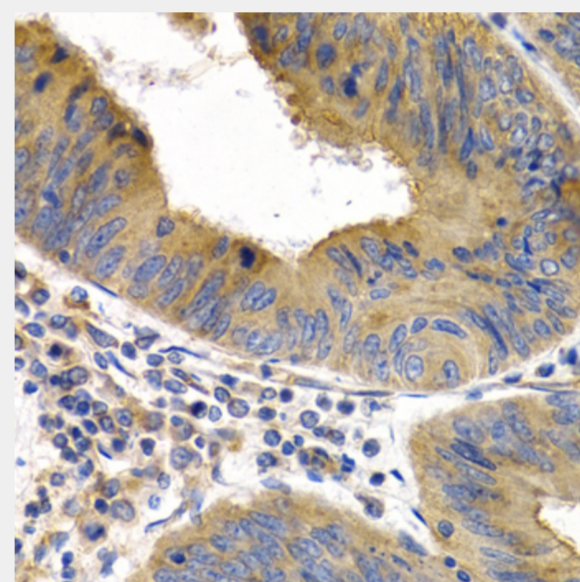
Immunohistochemistry of paraffin-embedded rat pancreas using HSPB8 antibody at dilution of 1:200 (40x lens).



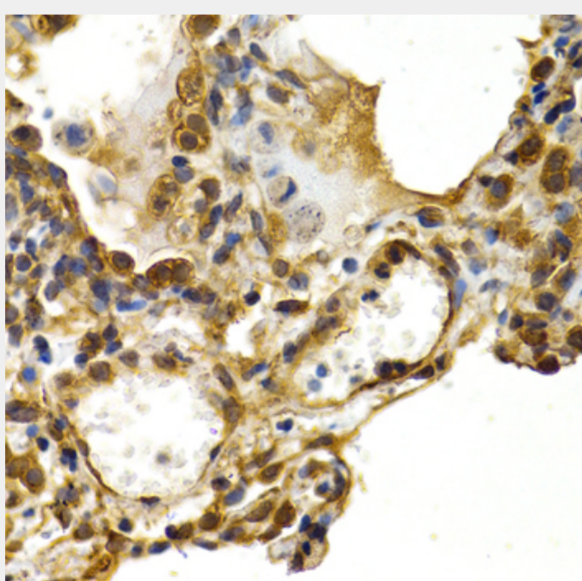
Immunohistochemistry of paraffin-embedded human thyroid cancer using HSPB8 antibody at dilution of 1:200 (40x lens).



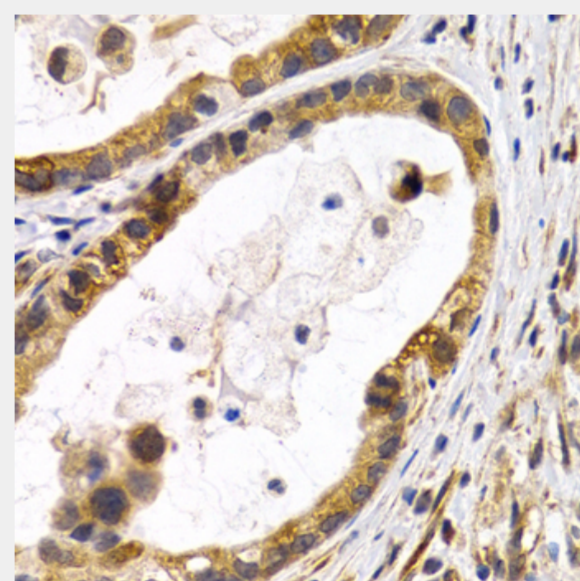
Immunohistochemistry of paraffin-embedded human normal colon using HSPB8 antibody at dilution of 1:200 (40x lens).



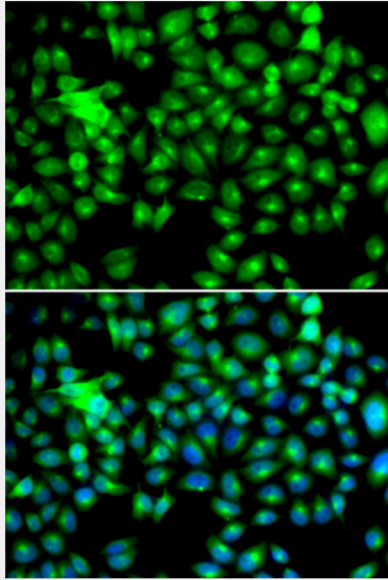
Immunohistochemistry of paraffin-embedded human colon cancer using HSPB8 antibody at dilution of 1:200 (40x lens).



Immunohistochemistry of paraffin-embedded human lung cancer using HSPB8 antibody at dilution of 1:200 (40x lens).



Immunohistochemistry of paraffin-embedded human stomach cancer using HSPB8 antibody at dilution of 1:200 (40x lens).



Immunofluorescence analysis of HeLa cells using HSPB8 antibody. Blue: DAPI for nuclear staining.

All products are for RESEARCH USE ONLY. Not for diagnostic & therapeutic purposes!