

Anti HSPA9 Antibody

Catalog No: tcsa17093



Available Sizes

Size: 100µl



Specifications

Application:

WB, IHC, IF

Species Reactivity:

Human, Mouse, Rat

Host Species:

Rabbit

Immunogen / Amino acids:

Recombinant protein of human HSPA9

Conjugation:

Unconjugated

Clonality:

Polyclonal

Isotype:

IgG

Form:

Liquid

Storage Buffer:

PBS with 0.02% sodium azide, 50% glycerol, pH7.3.

Recommended Dilution:

WB 1:500 - 1:2000

IHC 1:50 - 1:200

IF 1:50 - 1:200

Storage Instruction:

Store at -20C. Avoid freeze / thaw cycles.

Alternative Names:

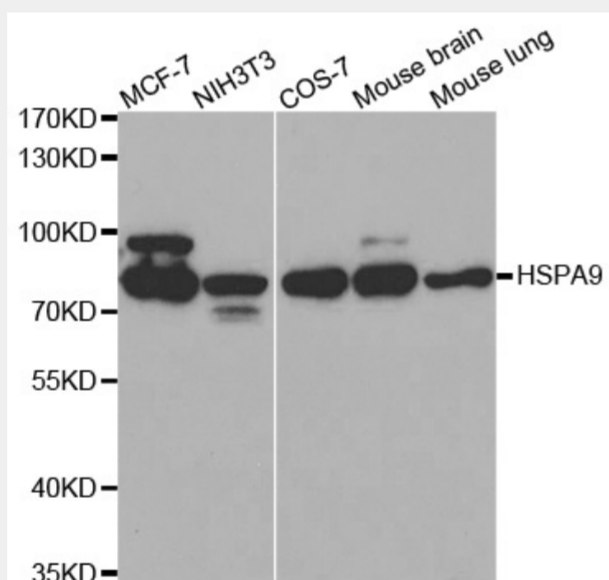
HSPA9 antibody; Stress-70 protein antibody; mitochondrial antibody; 75 kDa glucose-regulated protein antibody; GRP-75 antibody; Heat shock 70 kDa protein 9 antibody; Mortalin antibody; MOT antibody; Peptide-binding protein 74 antib

SwissProt:

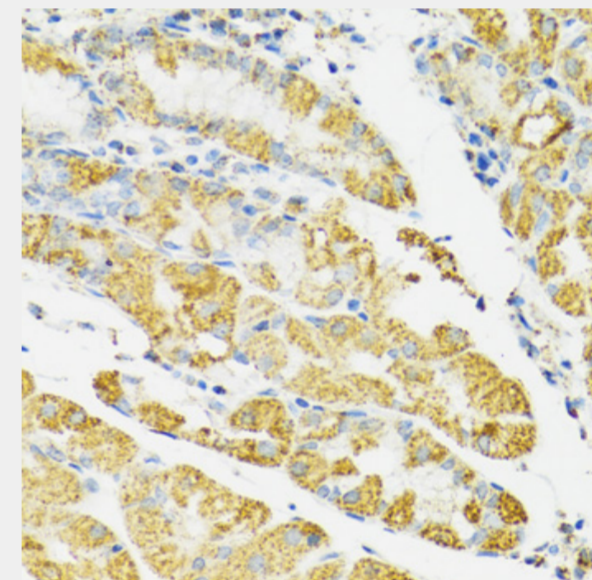
P38646

Product Description

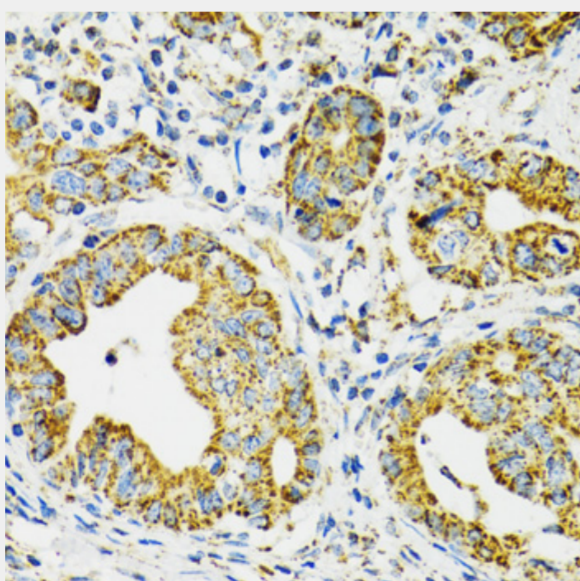
This gene encodes a member of the heat shock protein 70 gene family. The encoded protein is primarily localized to the mitochondria but is also found in the endoplasmic reticulum, plasma membrane and cytoplasmic vesicles. This protein is a heat-shock cognate protein. This protein plays a role in cell proliferation, stress response and maintenance of the mitochondria. A pseudogene of this gene is found on chromosome 2.



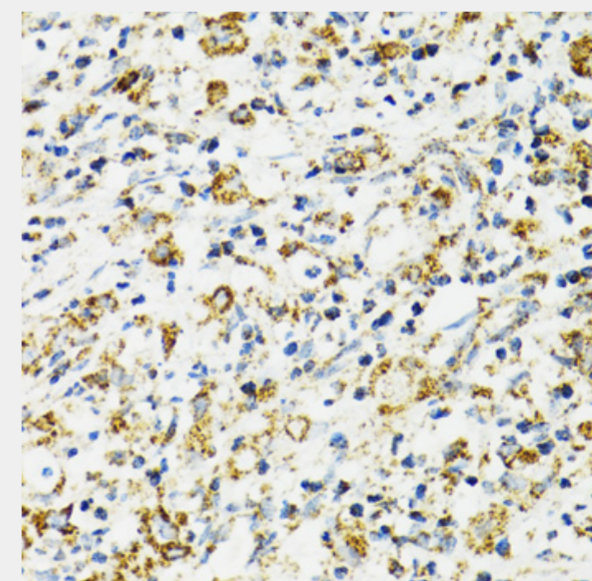
Western blot analysis of extracts of various cell lines, using HSPA9 antibody at 1:500 dilution. Secondary antibody: HRP Goat Anti-Rabbit IgG (H+L) at 1:10000 dilution. Lysates/proteins: 25ug per lane. Blocking buffer: 3% nonfat dry milk in TBST.



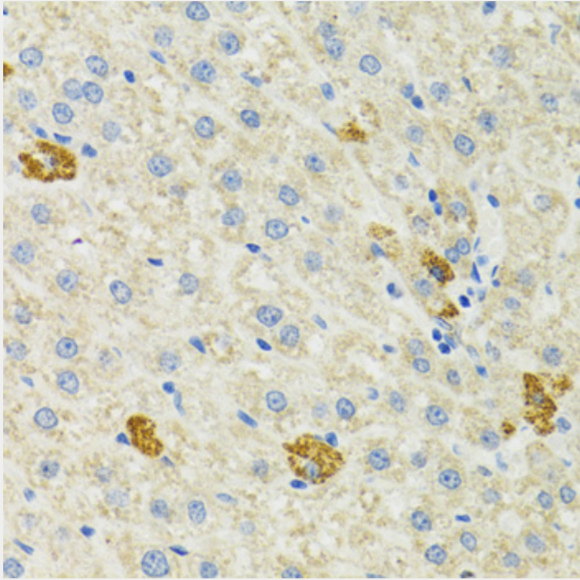
Immunohistochemistry of paraffin-embedded human stomach using HSPA9 antibody at dilution of 1:100 (40x lens).



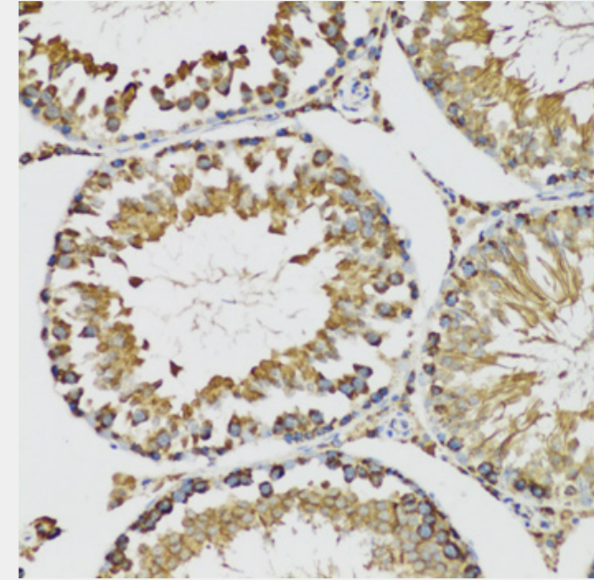
Immunohistochemistry of paraffin-embedded human gastric cancer using HSPA9 antibody at dilution of 1:100 (40x lens).



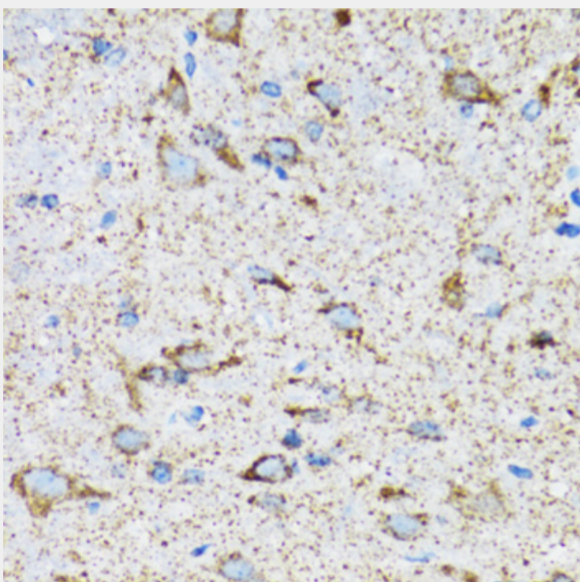
Immunohistochemistry of paraffin-embedded human uterine cancer using HSPA9 antibody at dilution of 1:100 (40x lens).



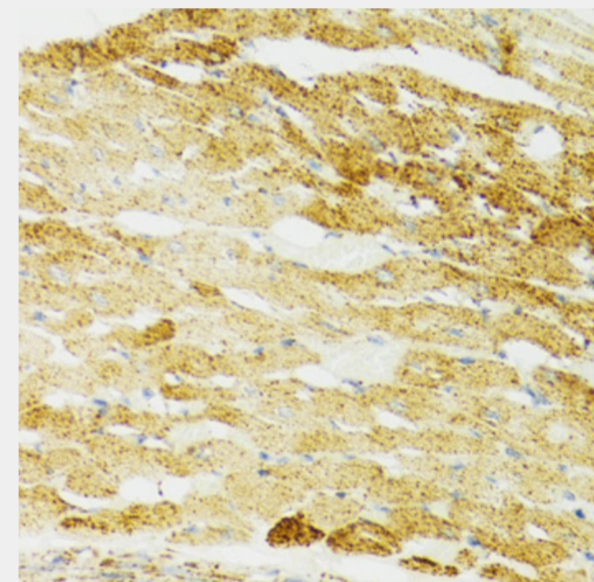
Immunohistochemistry of paraffin-embedded mouse liver using HSPA9 antibody at dilution of 1:100 (40x lens).



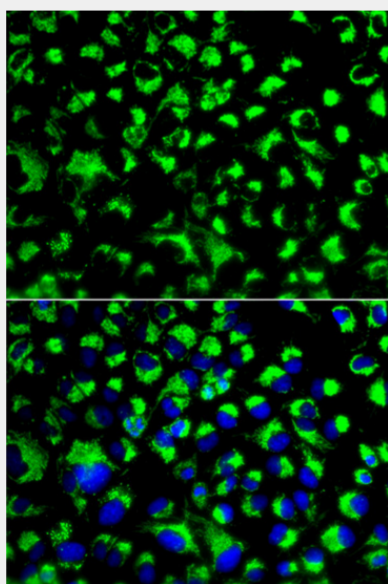
Immunohistochemistry of paraffin-embedded mouse testis using HSPA9 antibody at dilution of 1:100 (20x lens).



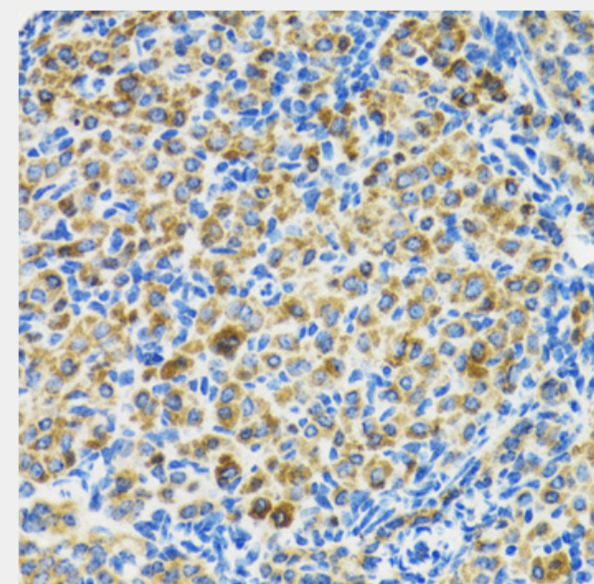
Immunohistochemistry of paraffin-embedded mouse spinal cord using HSPA9 antibody at dilution of 1:100 (40x lens).



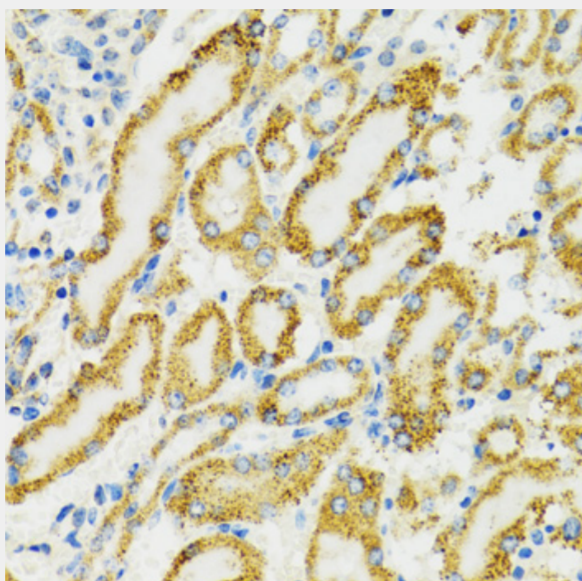
Immunohistochemistry of paraffin-embedded mouse heart using HSPA9 antibody at dilution of 1:100 (40x lens).



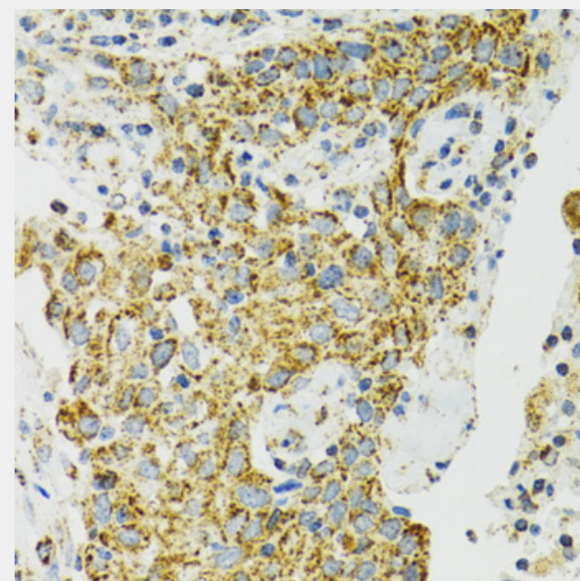
Immunofluorescence analysis of U2OS cells using HSPA9 antibody. Blue: DAPI for nuclear staining.



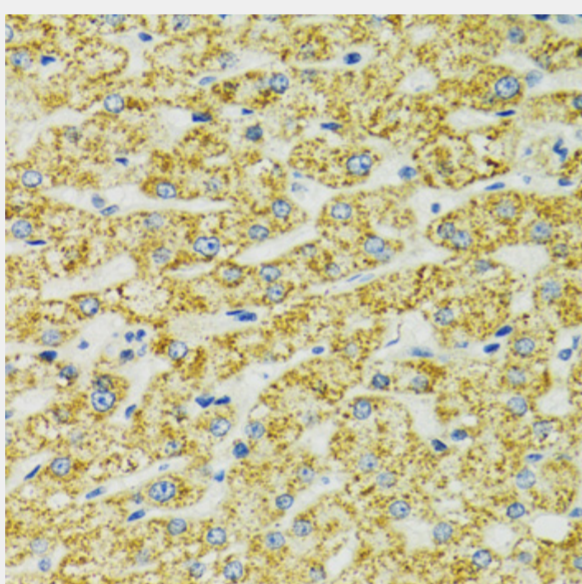
Immunohistochemistry of paraffin-embedded rat ovary using HSPA9 antibody at dilution of 1:100 (40x lens).



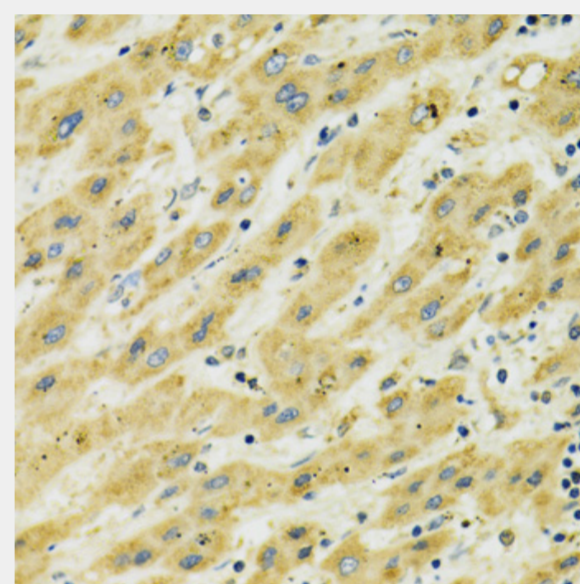
Immunohistochemistry of paraffin-embedded rat kidney using HSPA9 antibody at dilution of 1:100 (40x lens).



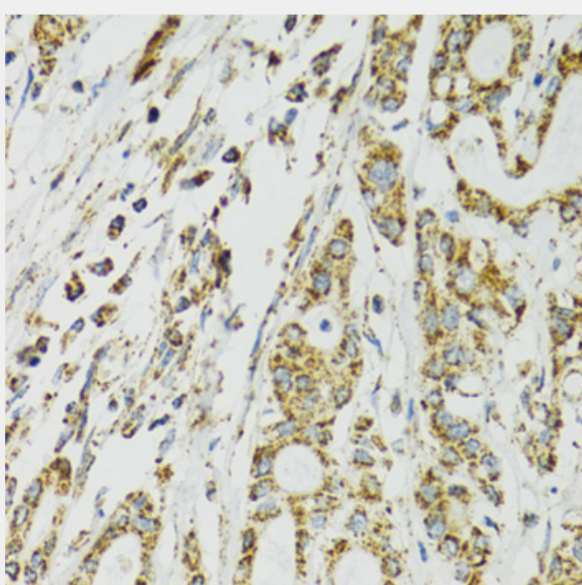
Immunohistochemistry of paraffin-embedded human lung cancer using HSPA9 antibody at dilution of 1:100 (40x lens).



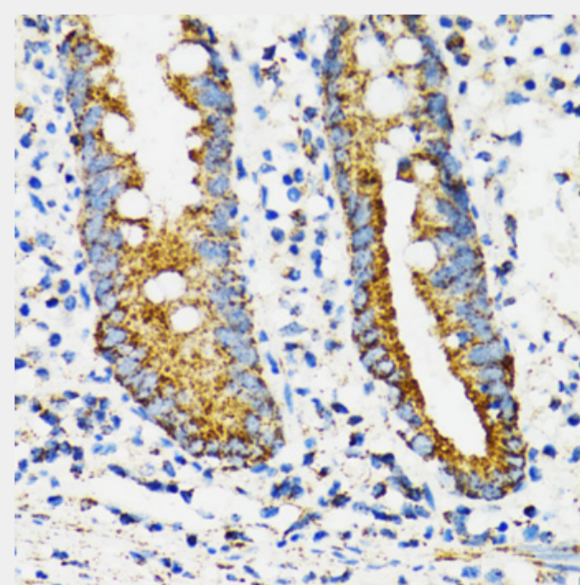
Immunohistochemistry of paraffin-embedded human liver using HSPA9 antibody at dilution of 1:100 (40x lens).



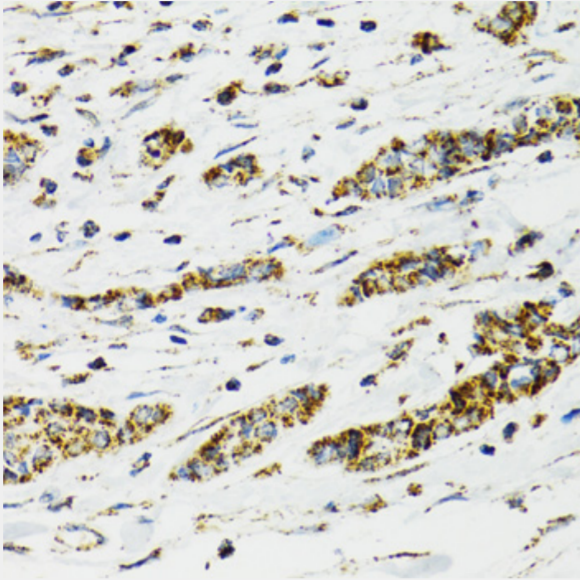
Immunohistochemistry of paraffin-embedded human liver cancer using HSPA9 antibody at dilution of 1:100 (40x lens).



Immunohistochemistry of paraffin-embedded human colon carcinoma using HSPA9 antibody at dilution of 1:100 (40x lens).



Immunohistochemistry of paraffin-embedded human vermiform appendix using HSPA9 antibody at dilution of 1:100 (40x lens).



Immunohistochemistry of paraffin-embedded human breast cancer using HSPA9 antibody at dilution of 1:100 (40x lens).

All products are for RESEARCH USE ONLY. Not for diagnostic & therapeutic purposes!