

# Anti HSP90AB1 Antibody

Catalog No: tcsa17083



## Available Sizes

---

**Size:** 100μl

---



## Specifications

---

**Application:**

WB, IHC, IF

---

**Species Reactivity:**

Human, Mouse, Rat, Monkey

---

**Host Species:**

Rabbit

---

**Immunogen / Amino acids:**

Recombinant protein of human HSP90AB1

---

**Conjugation:**

Unconjugated

---

**Clonality:**

Polyclonal

---

**Isotype:**

IgG

---

**Form:**

Liquid

---

**Storage Buffer:**

PBS with 0.02% sodium azide, 50% glycerol, pH7.3.

---

**Recommended Dilution:**

WB 1:500 - 1:2000

IHC 1:50 - 1:200

IF 1:50 - 1:200

---

### Storage Instruction:

Store at -20C. Avoid freeze / thaw cycles.

### Alternative Names:

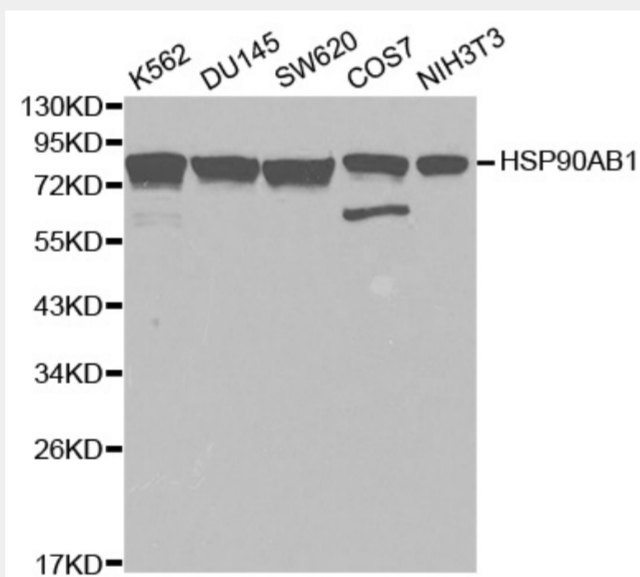
HSP90AB1 antibody; Heat shock protein HSP 90-beta antibody; HSP 90 antibody; Heat shock 84 kDa antibody; HSP 84 antibody; HSP84 antibody; HSP90AB1 antibody; HSP90B antibody; HSPC2 antibody; HSPCB antibody

### SwissProt:

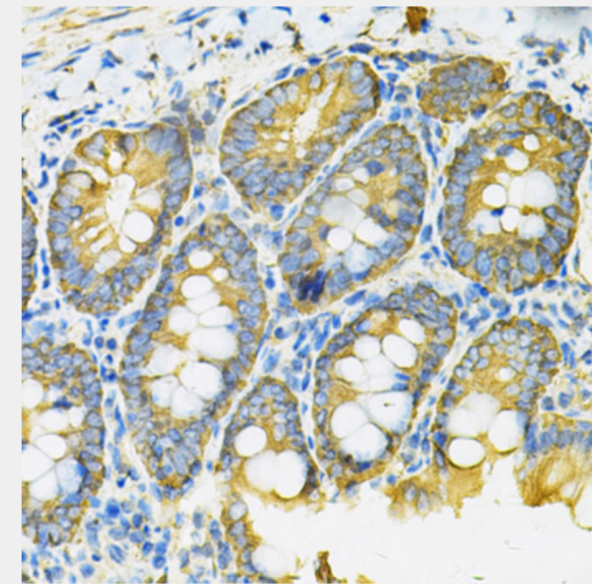
P08238

## Product Description

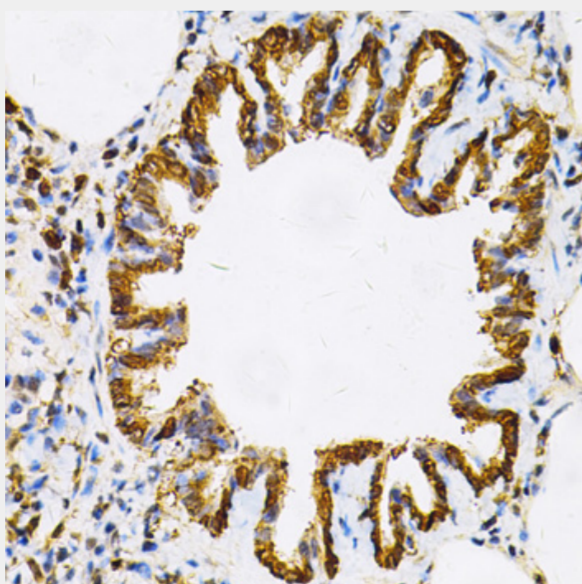
This gene encodes a member of the heat shock protein 90 family; these proteins are involved in signal transduction, protein folding and degradation and morphological evolution. This gene encodes the constitutive form of the cytosolic 90 kDa heat-shock protein and is thought to play a role in gastric apoptosis and inflammation. Alternative splicing results in multiple transcript variants. Pseudogenes have been identified on multiple chromosomes.



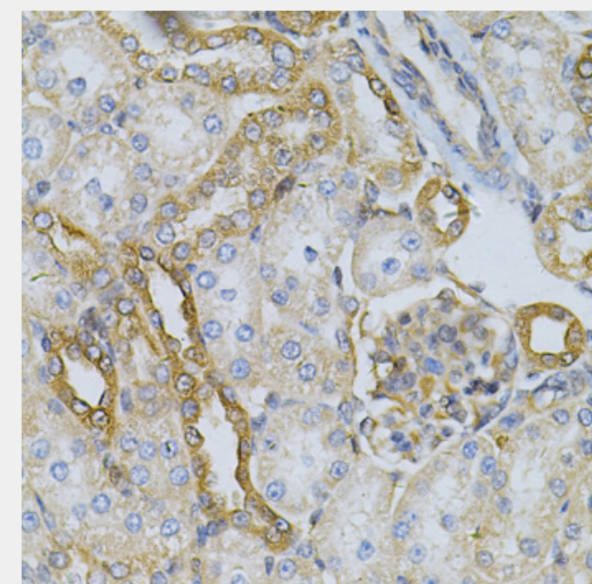
Western blot analysis of extracts of various cell lines, using HSP90AB1 antibody at 1:1000 dilution. Secondary antibody: HRP Goat Anti-Rabbit IgG (H+L) at 1:10000 dilution. Lysates/proteins: 25ug per lane. Blocking buffer: 3% nonfat dry milk in TBST.



Immunohistochemistry of paraffin-embedded rat intestine using HSP90AB1 Antibody at dilution of 1:100 (40x lens).

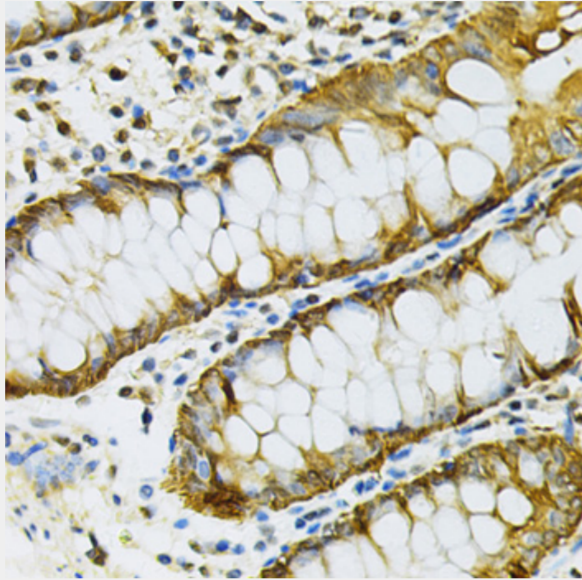


Immunohistochemistry of paraffin-embedded rat lung using HSP90AB1 Antibody at dilution of 1:100 (40x lens).

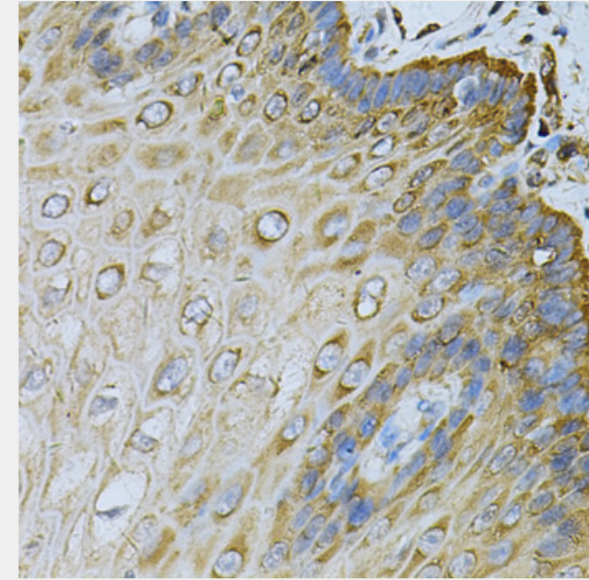


Immunohistochemistry of paraffin-embedded rat kidney using HSP90AB1 Antibody at dilution of 1:100 (40x lens).

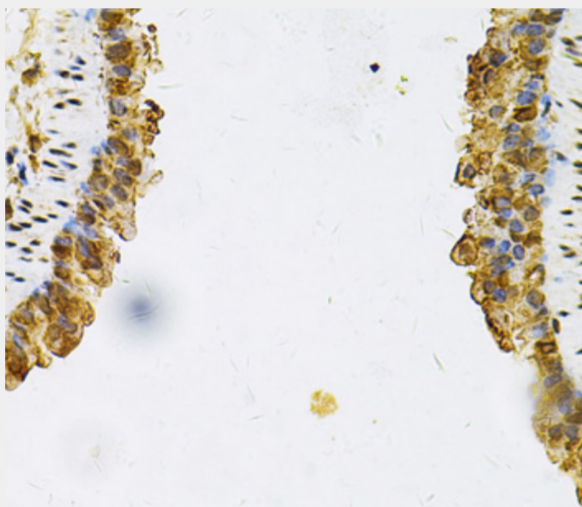




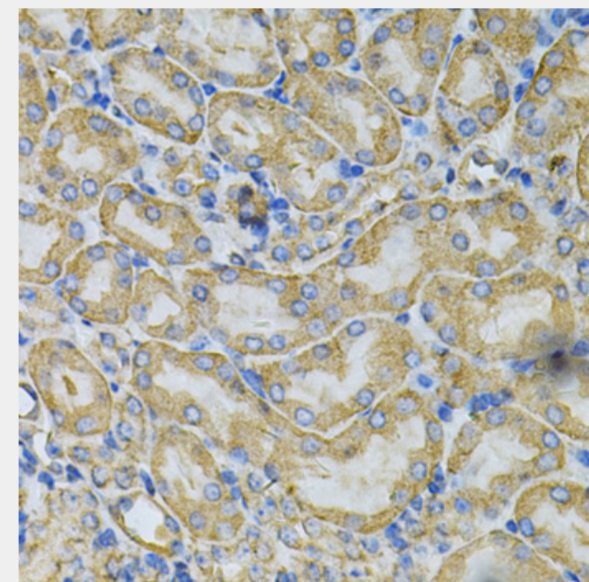
Immunohistochemistry of paraffin-embedded human colon using HSP90AB1 Antibody at dilution of 1:100 (40x lens).



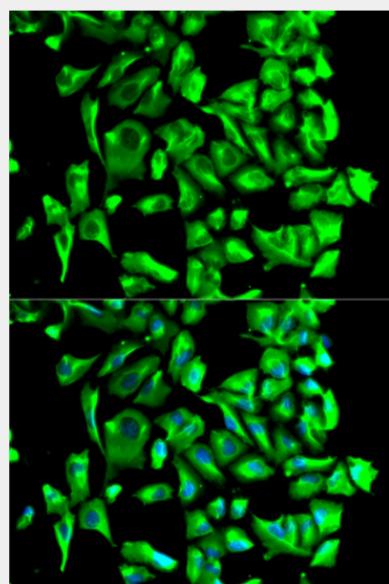
Immunohistochemistry of paraffin-embedded human esophagus using HSP90AB1 Antibody at dilution of 1:100 (40x lens).



Immunohistochemistry of paraffin-embedded mouse lung using HSP90AB1 Antibody at dilution of 1:100 (40x lens).



Immunohistochemistry of paraffin-embedded mouse kidney using HSP90AB1 Antibody at dilution of 1:100 (40x lens).



Immunofluorescence analysis of U2OS cells using HSP90AB1 antibody. Blue: DAPI for nuclear staining.

All products are for RESEARCH USE ONLY. Not for diagnostic & therapeutic purposes!