

Anti HIST1H4A Antibody

Catalog No: tcsa17008



Available Sizes

Size: 100µl



Specifications

Application:

WB, IHC, IF, IP

Species Reactivity:

Human, Mouse, Rat, Other (Wide Range)

Host Species:

Rabbit

Immunogen / Amino acids:

A synthetic methylated peptide corresponding to residues surrounding Arg3 of human histone H4

Conjugation:

Unconjugated

Isotype:

IgG

Form:

Liquid

Storage Buffer:

PBS with 0.02% sodium azide, 50% glycerol, pH7.3.

Recommended Dilution:

WB 1:500 - 1:2000

IHC 1:50 - 1:200

IF 1:50 - 1:200

IP 1:50 - 1:100

Storage Instruction:

Store at -20C. Avoid freeze / thaw cycles.

Alternative Names:

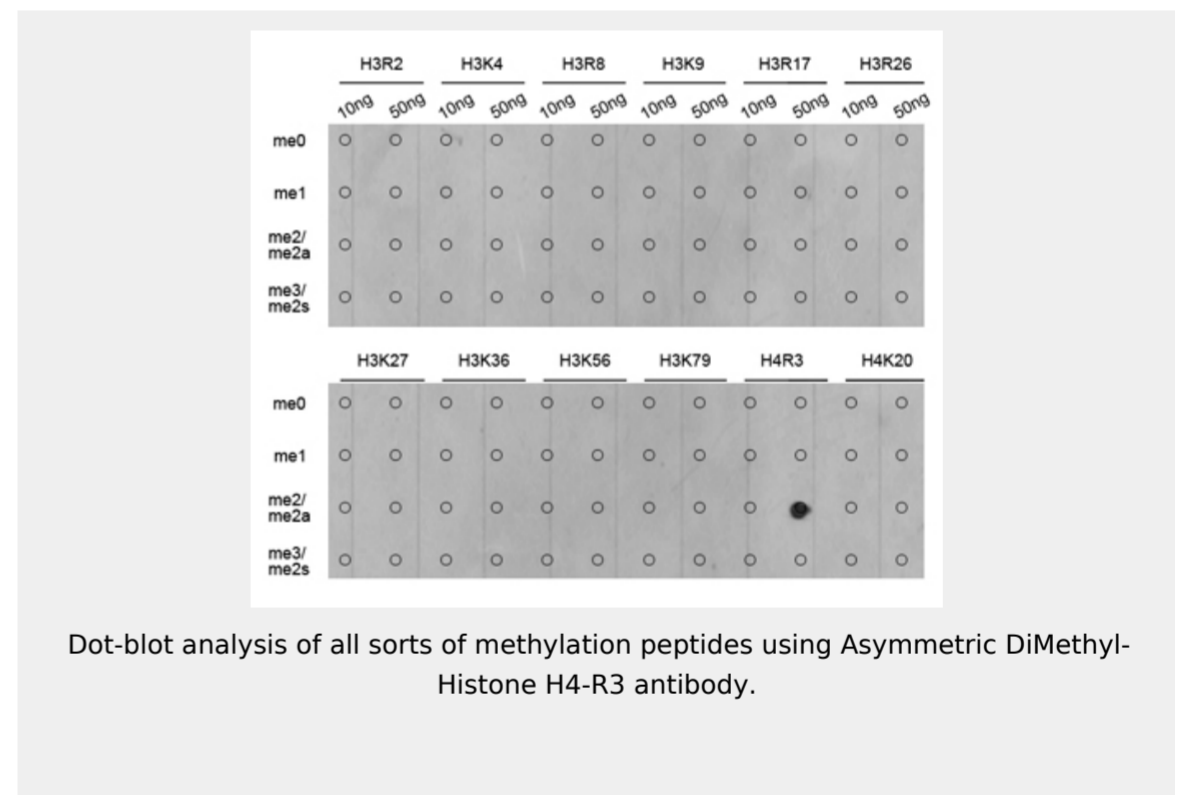
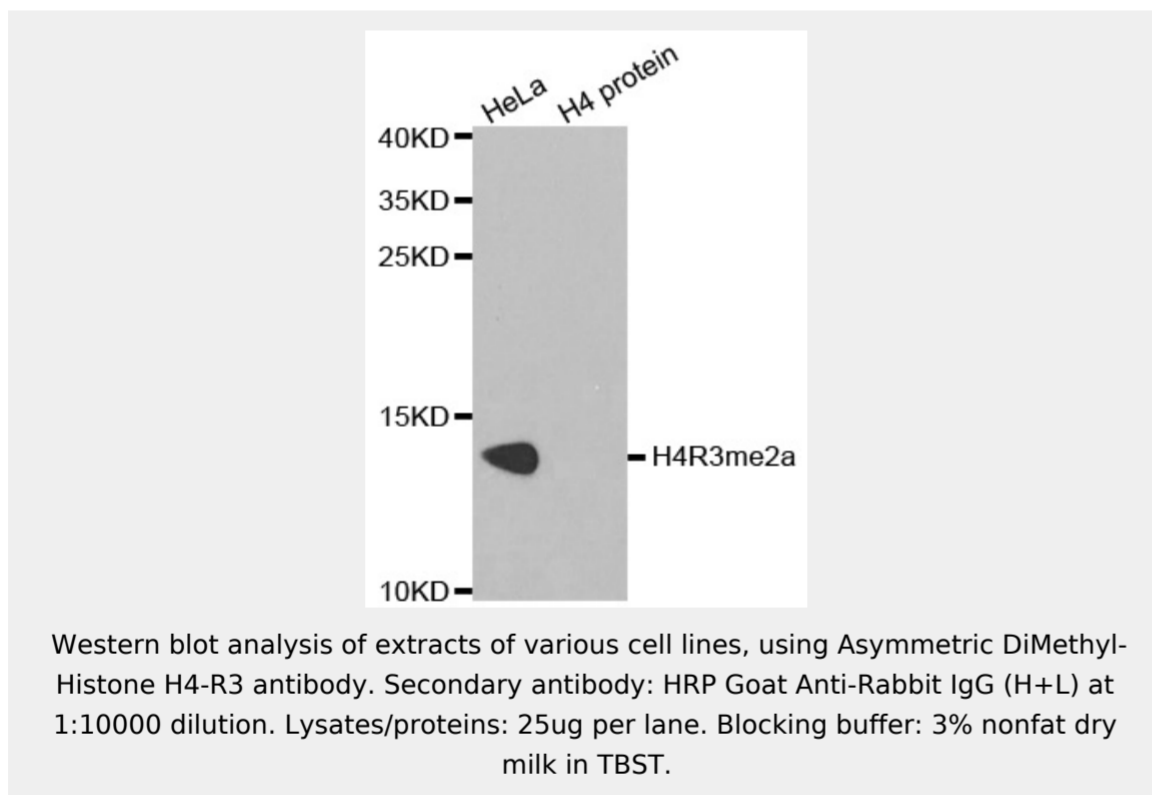
HIST1H4A antibody; Histone H4 antibody; HIST1H4A antibody; H4/A antibody; H4FA; antibody; HIST1H4B antibody; H4/I antibody; H4FI; antibody; HIST1H4C antibody; H4/G antibody; H4FG; antibody; HIST1H4D antibody; H4/B antib

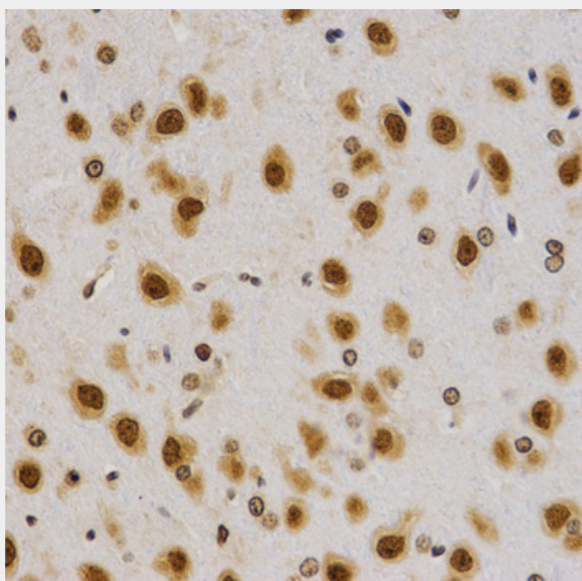
SwissProt:

P62805

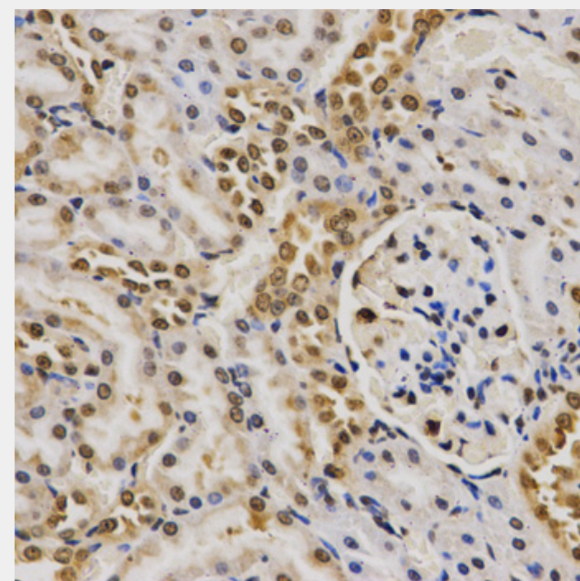
Product Description

Histones are basic nuclear proteins that are responsible for the nucleosome structure of the chromosomal fiber in eukaryotes. This structure consists of approximately 146 bp of DNA wrapped around a nucleosome, an octamer composed of pairs of each of the four core histones (H2A, H2B, H3, and H4). The chromatin fiber is further compacted through the interaction of a linker histone, H1, with the DNA between the nucleosomes to form higher order chromatin structures. This gene is intronless and encodes a replication-dependent histone that is a member of the histone H4 family. Transcripts from this gene lack polyA tails; instead, they contain a palindromic termination element. This gene is found in a histone cluster on chromosome 1. This gene is one of four histone genes in the cluster that are duplicated; this record represents the centromeric copy.

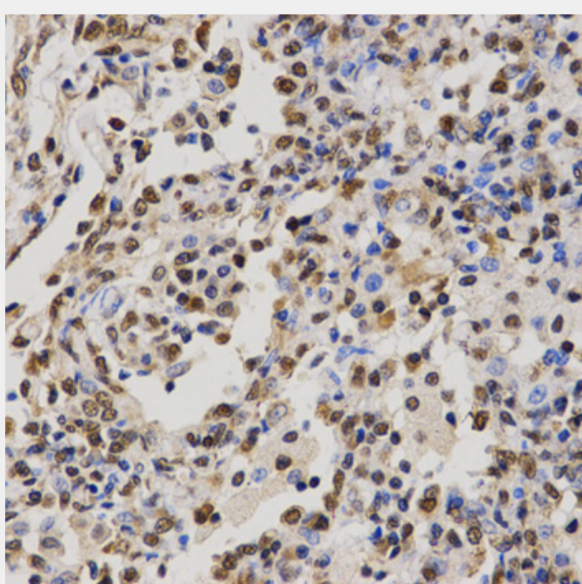




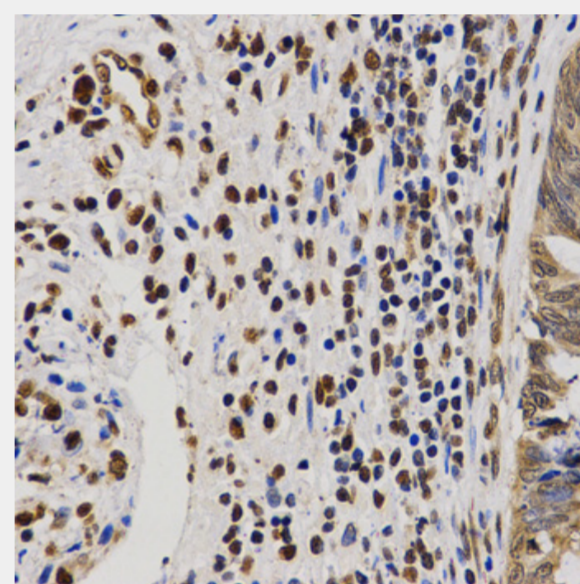
Immunohistochemistry of paraffin-embedded rat brain using Asymmetric DiMethyl-Histone H4-R3 antibody at dilution of 1:200 (40x lens).



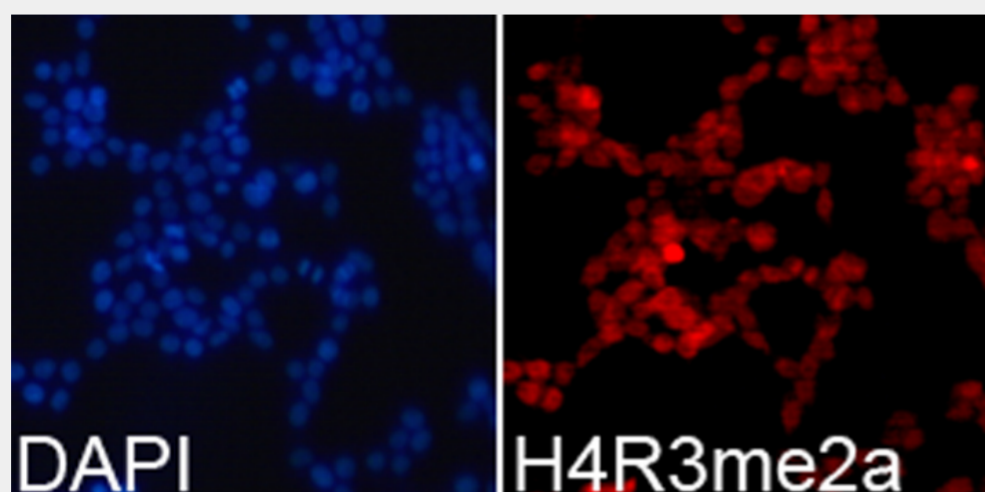
Immunohistochemistry of paraffin-embedded rat kidney using Asymmetric DiMethyl-Histone H4-R3 antibody at dilution of 1:200 (40x lens).



Immunohistochemistry of paraffin-embedded human lung cancer using Asymmetric DiMethyl-Histone H4-R3 antibody at dilution of 1:200 (40x lens).



Immunohistochemistry of paraffin-embedded human rectal cancer using Asymmetric DiMethyl-Histone H4-R3 antibody at dilution of 1:200 (40x lens).



Immunofluorescence analysis of 293T cells using Asymmetric DiMethyl-Histone H4-R3 antibody. Blue: DAPI for nuclear staining.

All products are for RESEARCH USE ONLY. Not for diagnostic & therapeutic purposes!