

Anti HIST1H3A Antibody

Catalog No: tcsa17000



Available Sizes

Size: 100µl



Specifications

Application:

WB, IHC, IF, IP

Species Reactivity:

Human, Mouse, Rat, Other (Wide Range)

Host Species:

Rabbit

Immunogen / Amino acids:

A synthetic methylated peptide corresponding to residues surrounding Arg17 of human histone H3

Conjugation:

Unconjugated

Isotype:

IgG

Form:

Liquid

Storage Buffer:

PBS with 0.02% sodium azide, 50% glycerol, pH7.3.

Recommended Dilution:

WB 1:500 - 1:2000

IHC 1:50 - 1:200

IF 1:50 - 1:200

IP 1:50 - 1:200

Storage Instruction:

Store at -20C. Avoid freeze / thaw cycles.

Alternative Names:

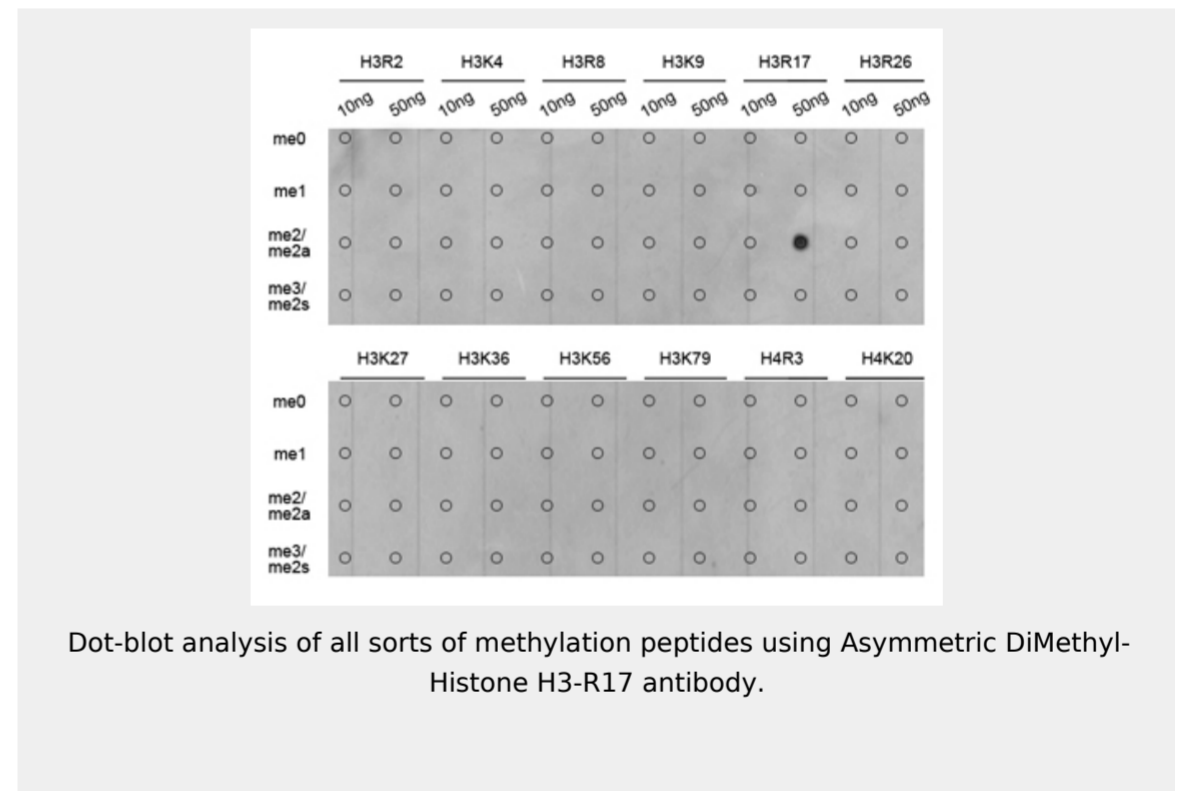
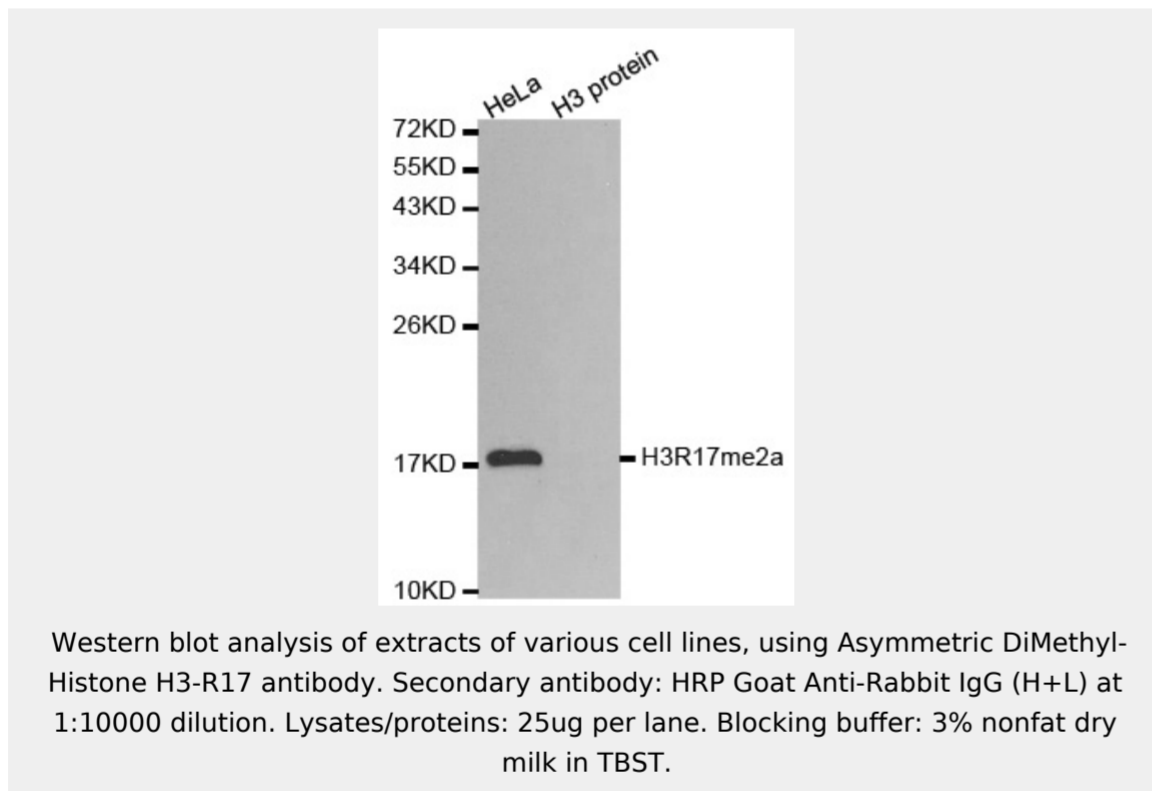
HIST1H3A antibody; Histone H3.1 antibody; Histone H3/a antibody; Histone H3/b antibody; Histone H3/c antibody; Histone H3/d antibody; Histone H3/f antibody; Histone H3/h antibody; Histone H3/i antibody; Histone H3/j antibody

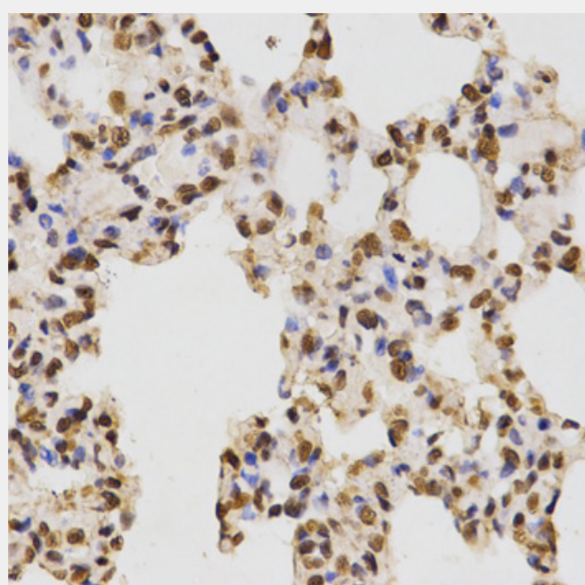
SwissProt:

P68431

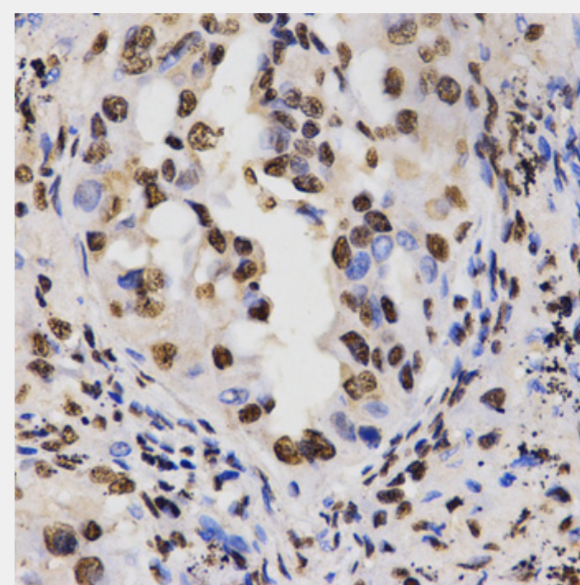
Product Description

Histones are basic nuclear proteins that are responsible for the nucleosome structure of the chromosomal fiber in eukaryotes. Two molecules of each of the four core histones (H2A, H2B, H3, and H4) form an octamer, around which approximately 146 bp of DNA is wrapped in repeating units, called nucleosomes. The linker histone, H1, interacts with linker DNA between nucleosomes and functions in the compaction of chromatin into higher order structures. This gene is intronless and encodes a replication-dependent histone that is a member of the histone H3 family. Transcripts from this gene lack polyA tails but instead contain a palindromic termination element. This gene is found in the small histone gene cluster on chromosome 6p22-p21.3.

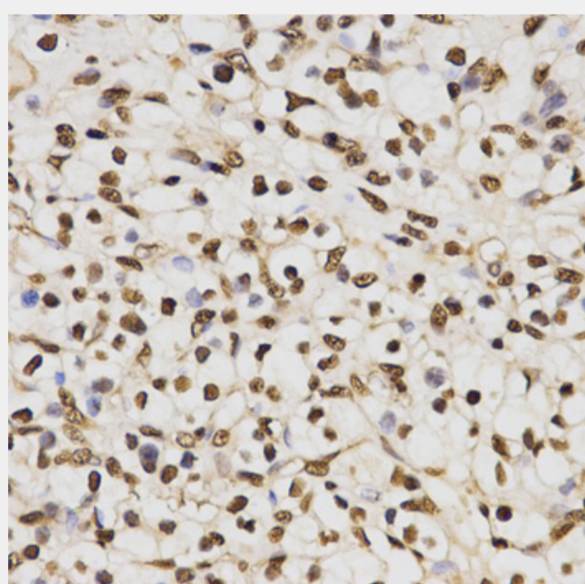




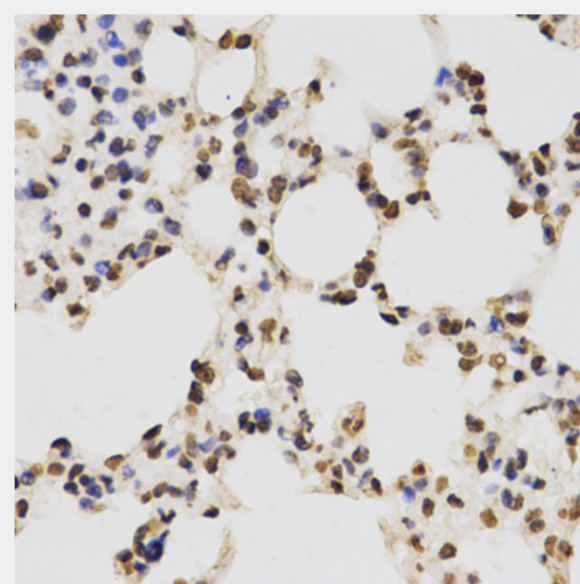
Immunohistochemistry of paraffin-embedded rat lung using Asymmetric DiMethyl-Histone H3-R17 antibody at dilution of 1:200 (40x lens).



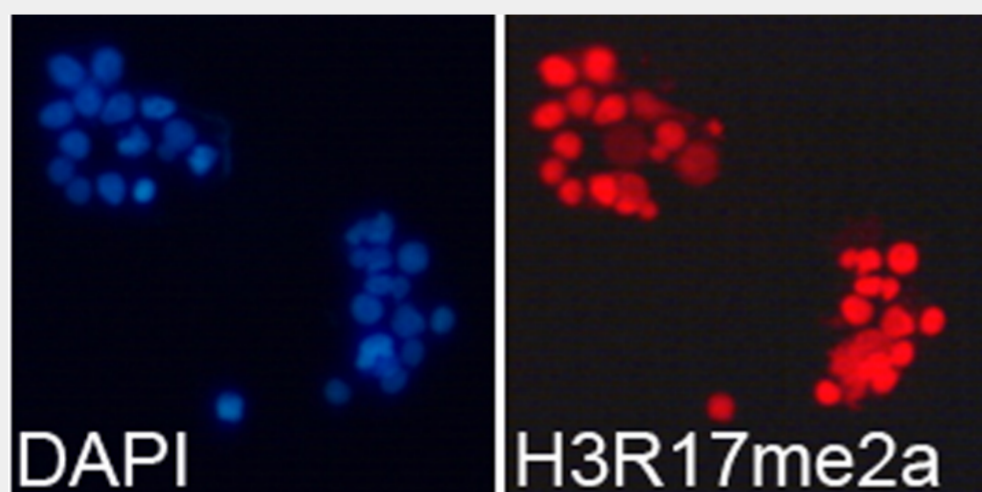
Immunohistochemistry of paraffin-embedded human lung cancer using Asymmetric DiMethyl-Histone H3-R17 antibody at dilution of 1:200 (40x lens).



Immunohistochemistry of paraffin-embedded human kidney cancer using Asymmetric DiMethyl-Histone H3-R17 antibody at dilution of 1:200 (40x lens).



Immunohistochemistry of paraffin-embedded mouse lung using Asymmetric DiMethyl-Histone H3-R17 antibody at dilution of 1:200 (40x lens).



Immunofluorescence analysis of 293T cells using Asymmetric DiMethyl-Histone H3-R17 antibody. Blue: DAPI for nuclear staining.

All products are for RESEARCH USE ONLY. Not for diagnostic & therapeutic purposes!