

Anti GGA2 Antibody

Catalog No: tcsa16885



Available Sizes

Size: 100μl



Specifications

Application:

WB, IHC, IF

Species Reactivity:

Human, Mouse, Rat

Host Species:

Rabbit

Immunogen / Amino acids:

Recombinant protein of human GGA2

Conjugation:

Unconjugated

Clonality:

Polyclonal

Isotype:

IgG

Form:

Liquid

Storage Buffer:

PBS with 0.02% sodium azide, 50% glycerol, pH7.3.

Recommended Dilution:

WB 1:500 - 1:2000

IHC 1:50 - 1:200

IF 1:50 - 1:200

Storage Instruction:

Store at -20C. Avoid freeze / thaw cycles.

Alternative Names:

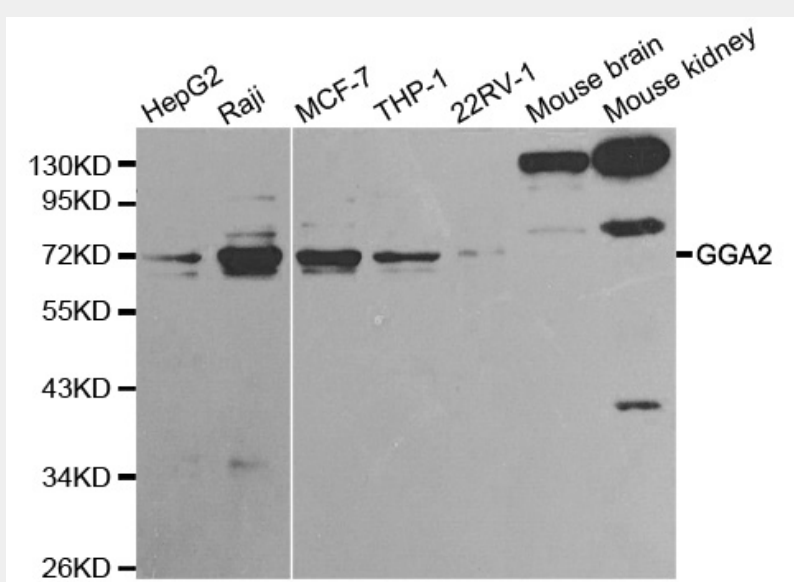
GGA2 antibody; ADP-ribosylation factor-binding protein GGA2 antibody; Gamma-adaptin-related protein 2 antibody; Golgi-localized antibody; gamma ear-containing antibody; ARF-binding protein 2 antibody; VHS domain and ear domain of gamma-a

SwissProt:

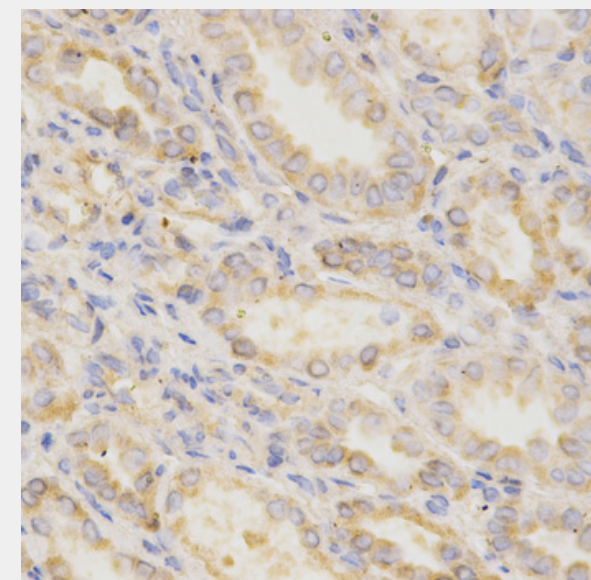
Q9UJY4

Product Description

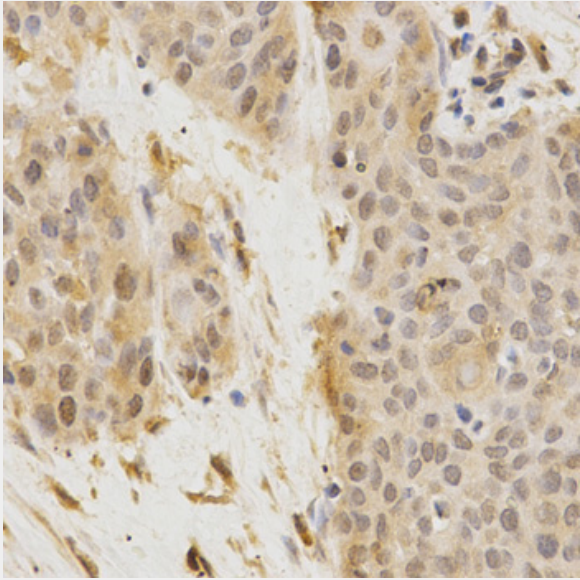
This gene encodes a member of the Golgi-localized, gamma adaptin ear-containing, ARF-binding (GGA) family. This family includes ubiquitous coat proteins that regulate the trafficking of proteins between the trans-Golgi network and the lysosome. These proteins share an amino-terminal VHS domain which mediates sorting of the mannose 6-phosphate receptors at the trans-Golgi network. They also contain a carboxy-terminal region with homology to the ear domain of gamma-adaptins. This family member may play a significant role in cargo molecules regulation and clathrin-coated vesicle assembly.



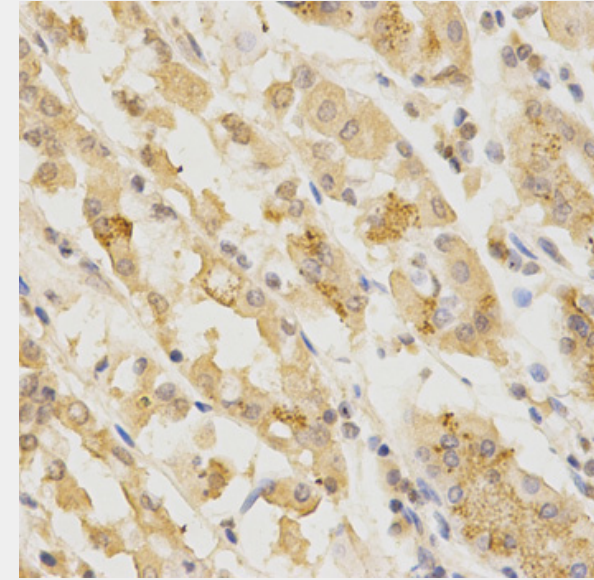
Western blot analysis of extracts of various cell lines, using GGA2 antibody at 1:1000 dilution. Secondary antibody: HRP Goat Anti-Rabbit IgG (H+L) at 1:10000 dilution. Lysates/proteins: 25ug per lane. Blocking buffer: 3% nonfat dry milk in TBST.



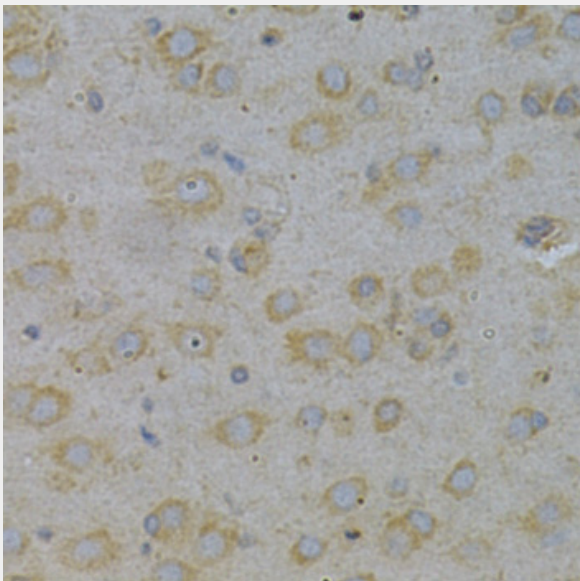
Immunohistochemistry of paraffin-embedded human kidney using GGA2 Antibody at dilution of 1:200 (40x lens).



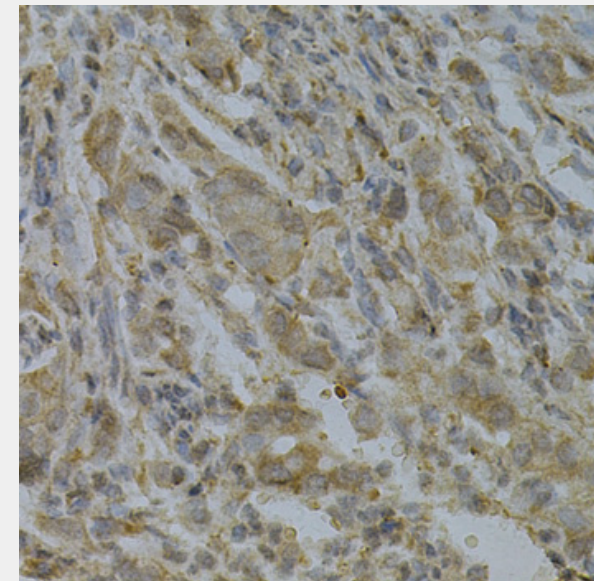
Immunohistochemistry of paraffin-embedded human esophageal cancer using GGA2 Antibody at dilution of 1:200 (40x lens).



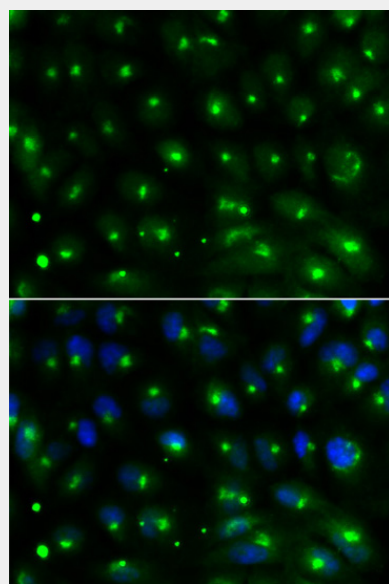
Immunohistochemistry of paraffin-embedded human stomach using GGA2 Antibody at dilution of 1:200 (40x lens).



Immunohistochemistry of paraffin-embedded rat brain using GGA2 Antibody at dilution of 1:200 (40x lens).



Immunohistochemistry of paraffin-embedded human gastric cancer using GGA2 Antibody at dilution of 1:200 (40x lens).



Immunofluorescence analysis of MCF-7 cells using GGA2 antibody. Blue: DAPI for nuclear staining.

All products are for RESEARCH USE ONLY. Not for diagnostic & therapeutic purposes!