

Anti GEMIN2 Antibody

Catalog No: tcsa16878



Available Sizes

Size: 100µl



Specifications

Application:

WB, IHC, IF

Species Reactivity:

Human, Mouse, Rat

Host Species:

Rabbit

Immunogen / Amino acids:

A synthetic peptide of human GEMIN2

Conjugation:

Unconjugated

Clonality:

Polyclonal

Isotype:

IgG

Form:

Liquid

Storage Buffer:

PBS with 0.02% sodium azide, 50% glycerol, pH7.3.

Recommended Dilution:

WB 1:500 - 1:1000

IHC 1:50 - 1:200

IF 1:50 - 1:200

Storage Instruction:

Store at -20C. Avoid freeze / thaw cycles.

Alternative Names:

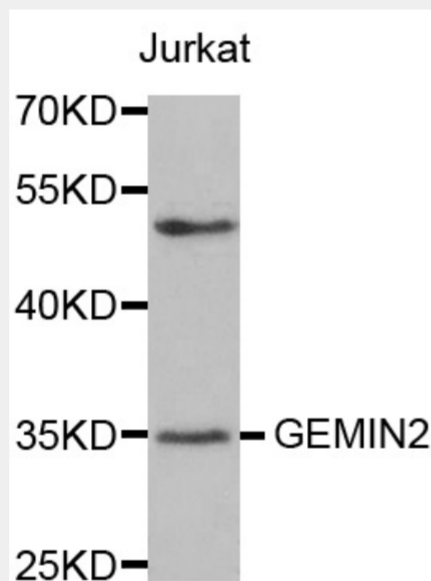
GEMIN2 antibody; Gem-associated protein 2 antibody; Gemin-2 antibody; Component of gems 2 antibody; Survival of motor neuron protein-interacting protein 1 antibody; SMN-interacting protein 1 antibody; GEMIN2 antibody; SIP1 antibody

SwissProt:

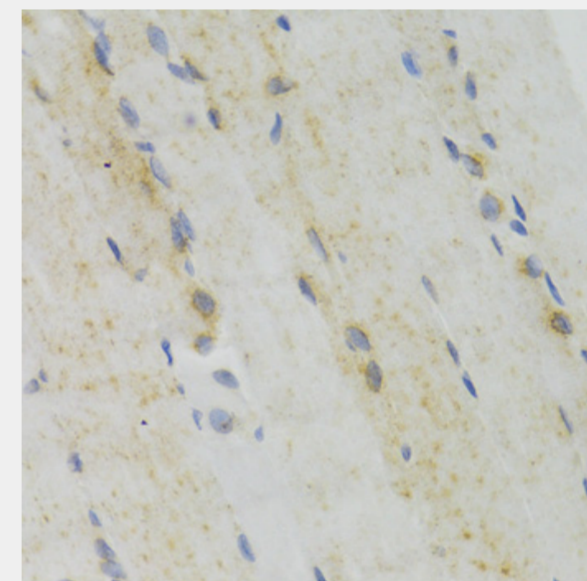
O14893

Product Description

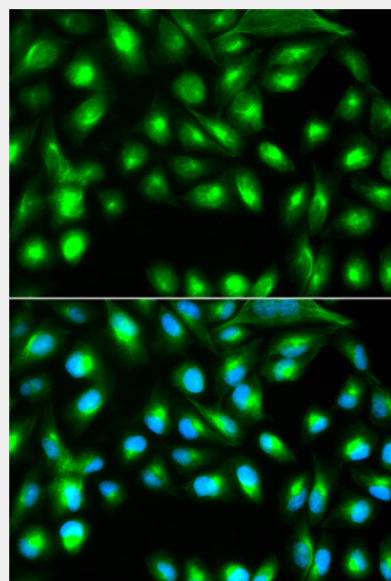
This gene encodes one of the proteins found in the SMN complex, which consists of several gemin proteins and the protein known as the survival of motor neuron protein. The SMN complex is localized to a subnuclear compartment called gems (gemini of coiled bodies) and is required for assembly of spliceosomal snRNPs and for pre-mRNA splicing. This protein interacts directly with the survival of motor neuron protein and it is required for formation of the SMN complex. A knockout mouse targeting the mouse homolog of this gene exhibited disrupted snRNP assembly and motor neuron degeneration.



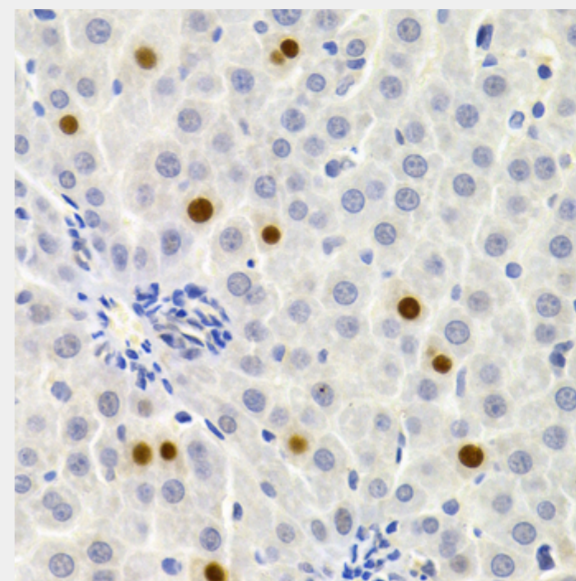
Western blot analysis of extracts of Jurkat cells, using GEMIN2 antibody at 1:500 dilution. Secondary antibody: HRP Goat Anti-Rabbit IgG (H+L) at 1:10000 dilution. Lysates/proteins: 25ug per lane. Blocking buffer: 3% nonfat dry milk in TBST. Detection: ECL Basic Kit. Exposure time: 90s.



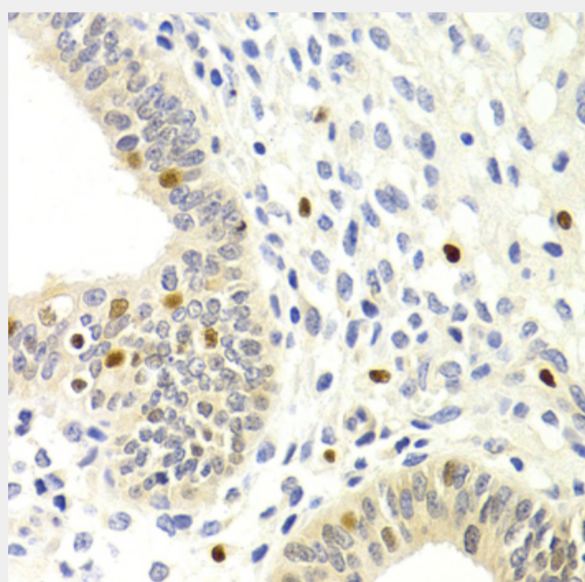
Immunohistochemistry of paraffin-embedded mouse skeletal muscle using GEMIN2 Antibody at dilution of 1:100 (40x lens).



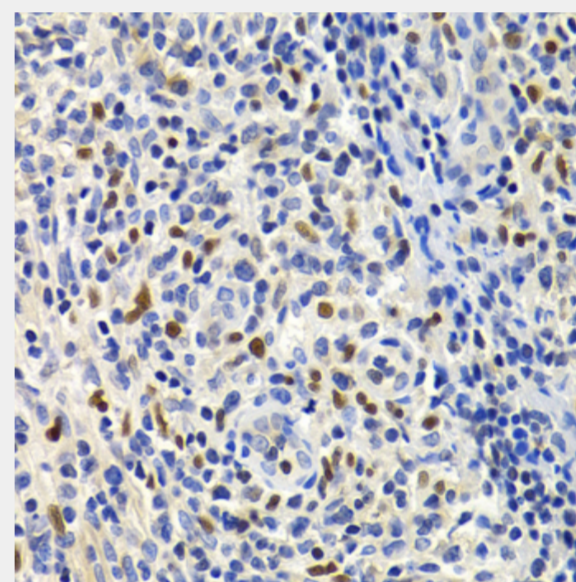
Immunofluorescence analysis of A549 cells using GEMIN2 antibody. Blue: DAPI for nuclear staining.



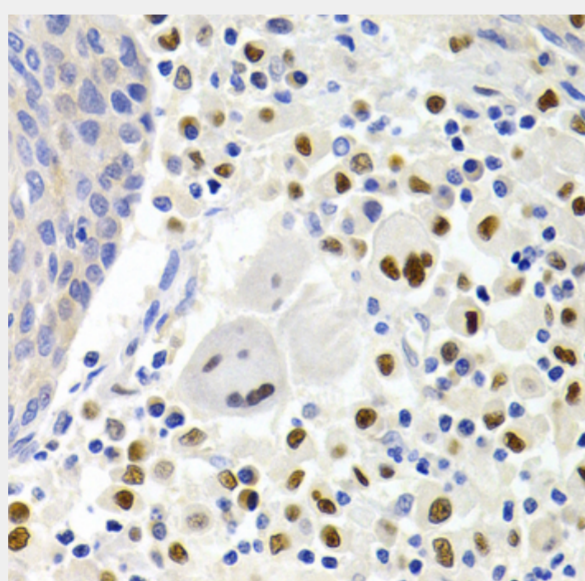
Immunohistochemistry of paraffin-embedded rat liver using GEMIN2 Antibody at dilution of 1:200 (40x lens).



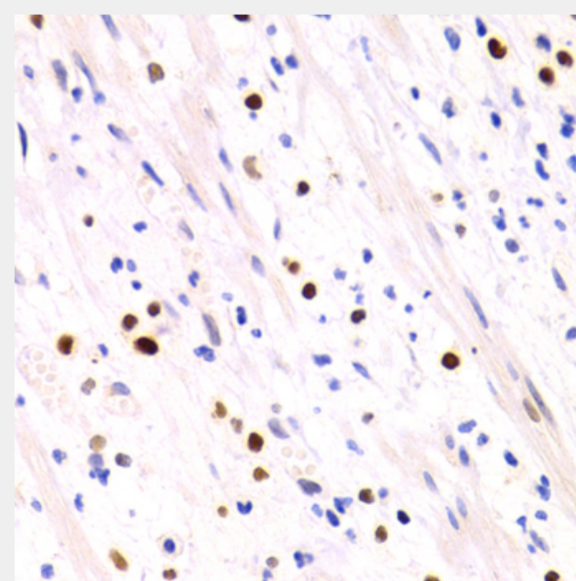
Immunohistochemistry of paraffin-embedded human uterine cancer using GEMIN2 Antibody at dilution of 1:200 (40x lens).



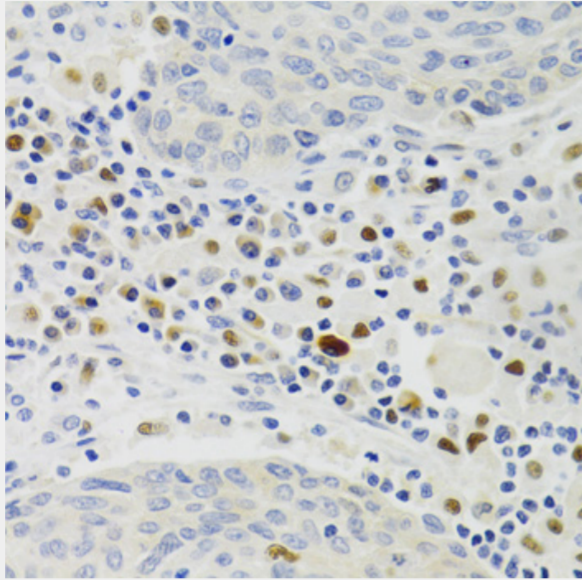
Immunohistochemistry of paraffin-embedded human lymphonodus using GEMIN2 Antibody at dilution of 1:200 (40x lens).



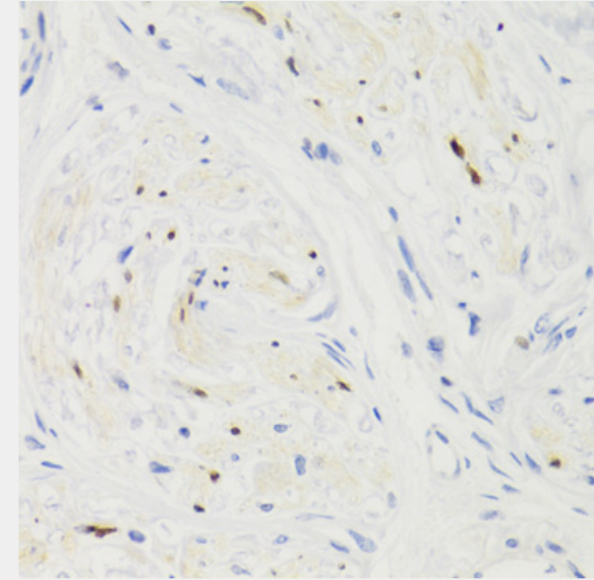
Immunohistochemistry of paraffin-embedded human lung cancer using GEMIN2 Antibody at dilution of 1:200 (40x lens).



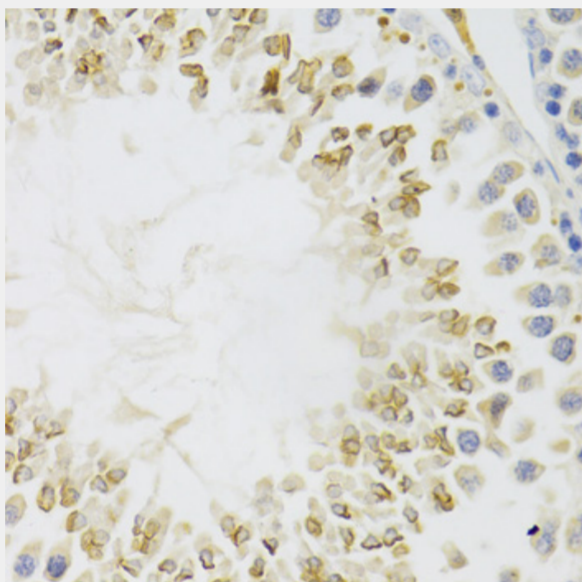
Immunohistochemistry of paraffin-embedded human vermiform appendix using GEMIN2 Antibody at dilution of 1:200 (40x lens).



Immunohistochemistry of paraffin-embedded human lung cancer using GEMIN2 Antibody at dilution of 1:100 (40x lens).



Immunohistochemistry of paraffin-embedded human breast cancer using GEMIN2 Antibody at dilution of 1:100 (40x lens).



Immunohistochemistry of paraffin-embedded mouse testis using GEMIN2 Antibody at dilution of 1:100 (40x lens).

All products are for RESEARCH USE ONLY. Not for diagnostic & therapeutic purposes!