

Anti FLNB Antibody

Catalog No: tcsa16818



Available Sizes

Size: 100µl



Specifications

Application:

WB, IHC, IF

Species Reactivity:

Human, Mouse, Rat

Host Species:

Rabbit

Immunogen / Amino acids:

Recombinant protein of human FLNB

Conjugation:

Unconjugated

Clonality:

Polyclonal

Isotype:

IgG

Form:

Liquid

Storage Buffer:

PBS with 0.02% sodium azide, 50% glycerol, pH7.3.

Recommended Dilution:

WB 1:500 - 1:1000

IHC 1:50 - 1:100

IF 1:20 - 1:100

Storage Instruction:

Store at -20C. Avoid freeze / thaw cycles.

Alternative Names:

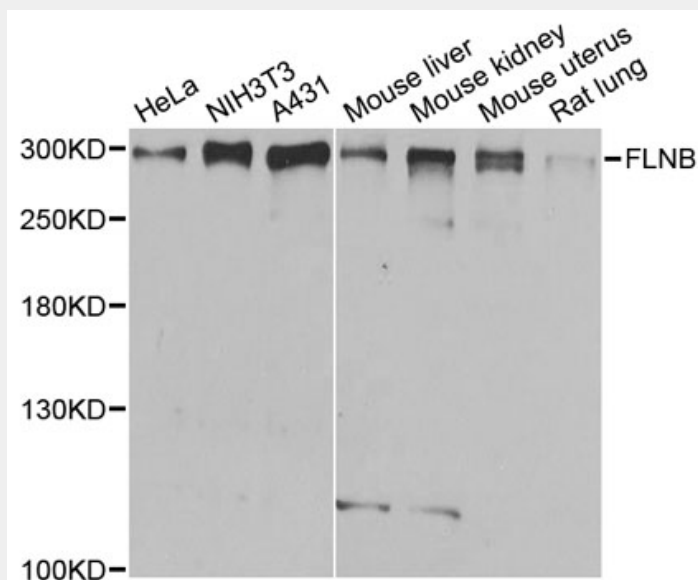
FLNB antibody; Filamin-B antibody; FLN-B antibody; ABP-278 antibody; ABP-280 homolog antibody; Actin-binding-like protein antibody; Beta-filamin antibody; Filamin homolog 1 antibody; Fh1 antibody; Filamin-3 antibody; Thyroid

SwissProt:

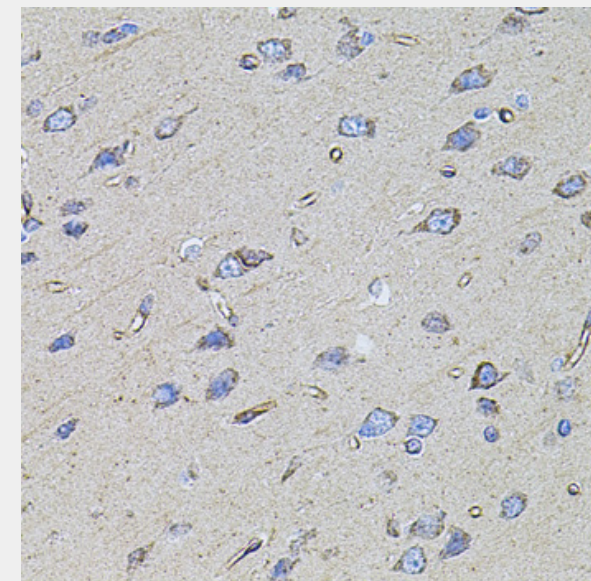
O75369

Product Description

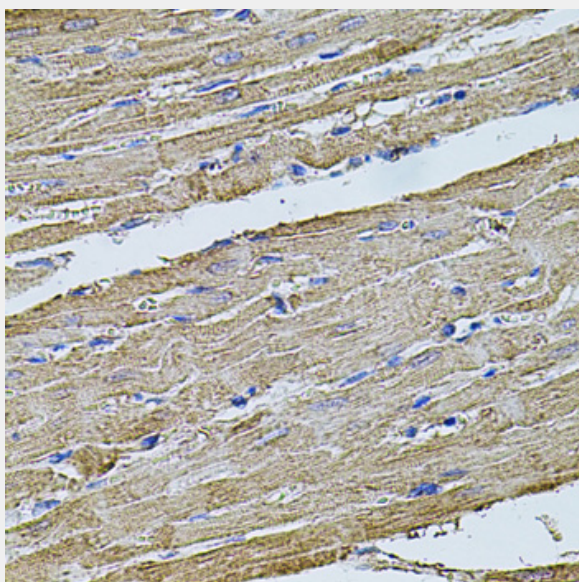
This gene encodes a member of the filamin family. The encoded protein interacts with glycoprotein Ib alpha as part of the process to repair vascular injuries. The platelet glycoprotein Ib complex includes glycoprotein Ib alpha, and it binds the actin cytoskeleton. Mutations in this gene have been found in several conditions: atelosteogenesis type 1 and type 3; boomerang dysplasia; autosomal dominant Larsen syndrome; and spondylocarpotarsal synostosis syndrome. Multiple alternatively spliced transcript variants that encode different protein isoforms have been described for this gene.



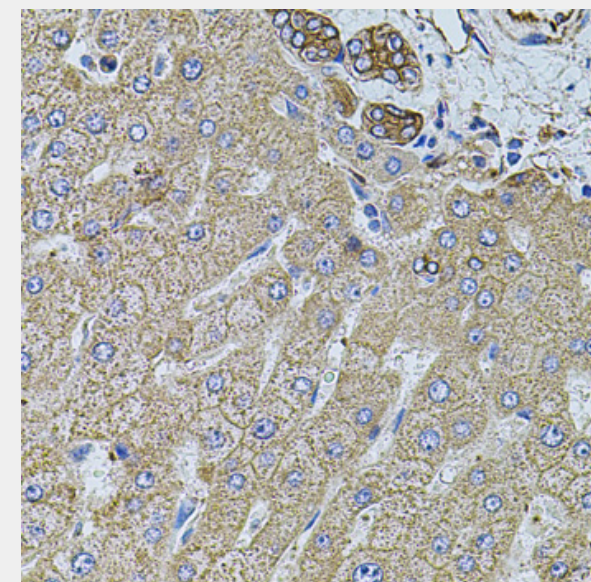
Western blot analysis of extracts of various cell lines, using FLNB antibody at 1:1000 dilution. Secondary antibody: HRP Goat Anti-Rabbit IgG (H+L) at 1:10000 dilution. Lysates/proteins: 25ug per lane. Blocking buffer: 3% nonfat dry milk in TBST. Detection: ECL Basic Kit. Exposure time: 30s.



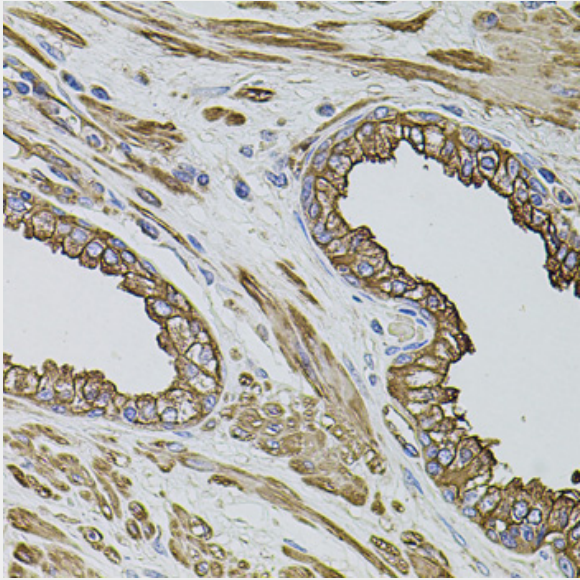
Immunohistochemistry of paraffin-embedded rat brain using FLNB antibody at dilution of 1:100 (40x lens).



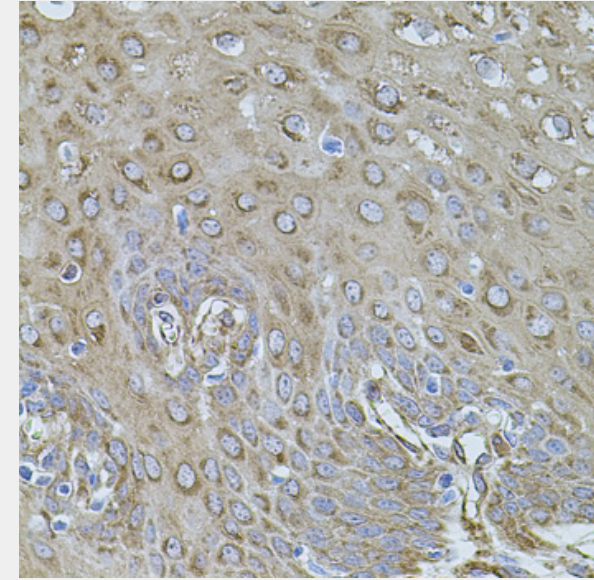
Immunohistochemistry of paraffin-embedded rat heart using FLNB antibody at dilution of 1:100 (40x lens).



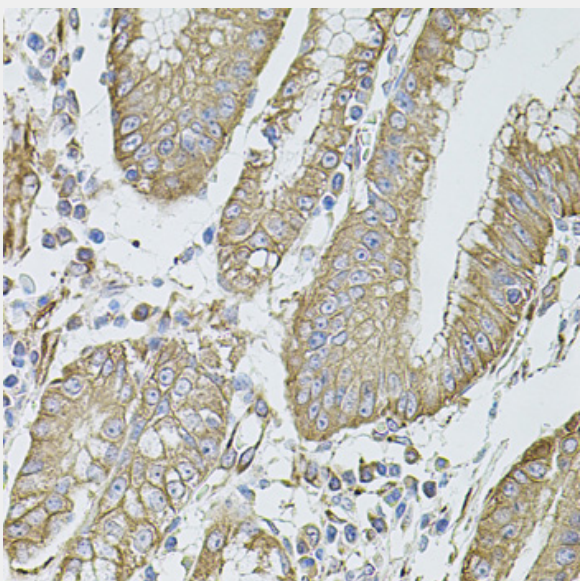
Immunohistochemistry of paraffin-embedded human liver injury using FLNB antibody at dilution of 1:100 (40x lens).



Immunohistochemistry of paraffin-embedded human prostate using FLNB antibody at dilution of 1:100 (40x lens).



Immunohistochemistry of paraffin-embedded human esophagus using FLNB antibody at dilution of 1:100 (40x lens).



Immunohistochemistry of paraffin-embedded human stomach using FLNB antibody at dilution of 1:100 (40x lens).

All products are for RESEARCH USE ONLY. Not for diagnostic & therapeutic purposes!