

Anti ELAVL1 Antibody

Catalog No: tcsa16718



Available Sizes

Size: 100µl



Specifications

Application:

WB, IHC, IF

Species Reactivity:

Human, Mouse, Rat

Host Species:

Rabbit

Immunogen / Amino acids:

Recombinant protein of human ELAVL1

Conjugation:

Unconjugated

Clonality:

Polyclonal

Isotype:

IgG

Form:

Liquid

Storage Buffer:

PBS with 0.02% sodium azide, 50% glycerol, pH7.3.

Recommended Dilution:

WB 1:500 - 1:2000

IHC 1:100 - 1:200

IF 1:50 - 1:200

Storage Instruction:

Store at -20C. Avoid freeze / thaw cycles.

Alternative Names:

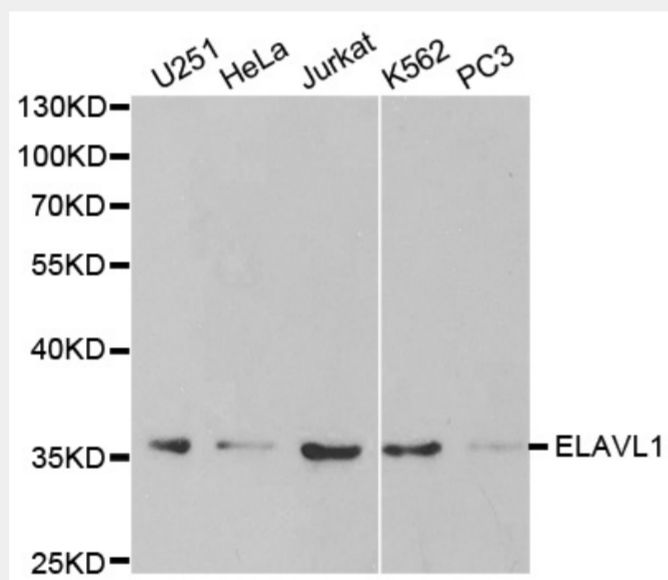
ELAVL1 antibody; ELAV-like protein 1 antibody; Hu-antigen R antibody; HuR antibody; ELAVL1 antibody; HUR antibody

SwissProt:

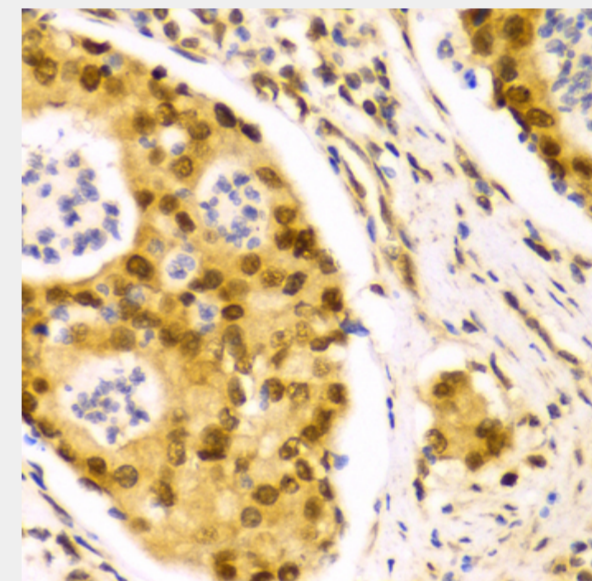
Q15717

Product Description

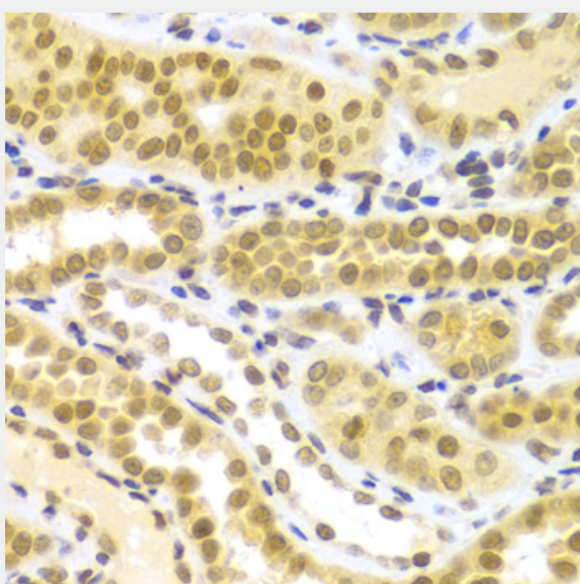
The protein encoded by this gene is a member of the ELAVL family of RNA-binding proteins that contain several RNA recognition motifs, and selectively bind AU-rich elements (AREs) found in the 3' untranslated regions of mRNAs. AREs signal degradation of mRNAs as a means to regulate gene expression, thus by binding AREs, the ELAVL family of proteins play a role in stabilizing ARE-containing mRNAs. This gene has been implicated in a variety of biological processes and has been linked to a number of diseases, including cancer. It is highly expressed in many cancers, and could be potentially useful in cancer diagnosis, prognosis, and therapy.



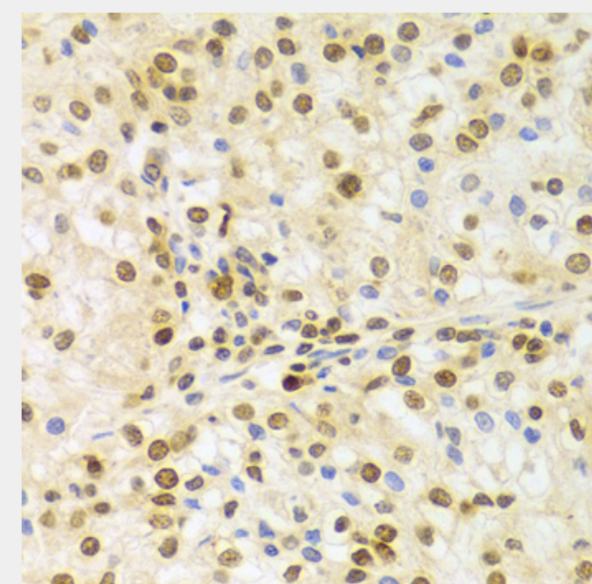
Western blot analysis of extracts of various cell lines, using ELAVL1 antibody at 1:1000 dilution. Secondary antibody: HRP Goat Anti-Rabbit IgG (H+L) at 1:10000 dilution. Lysates/proteins: 25ug per lane. Blocking buffer: 3% nonfat dry milk in TBST.



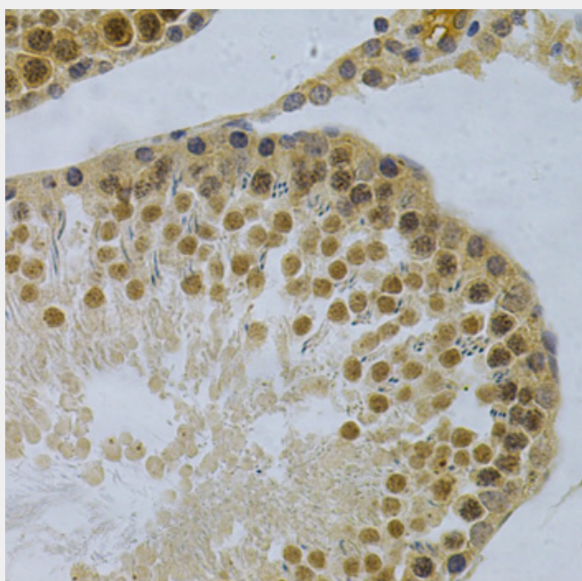
Immunohistochemistry of paraffin-embedded human gastric cancer using ELAVL1 Antibody at dilution of 1:100 (40x lens).



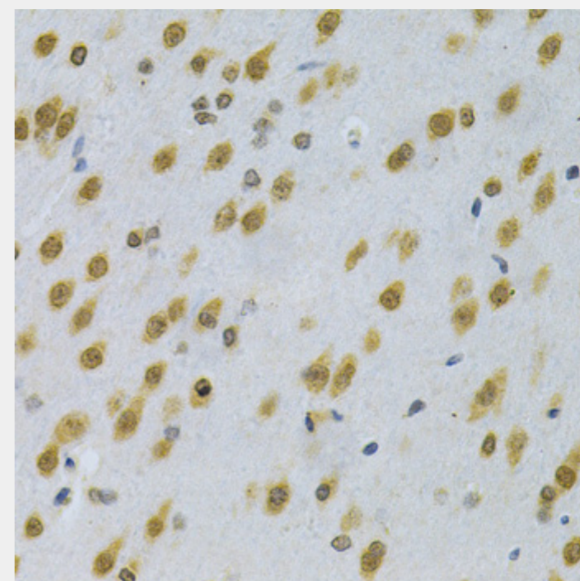
Immunohistochemistry of paraffin-embedded human kidney using ELAVL1 Antibody at dilution of 1:100 (40x lens).



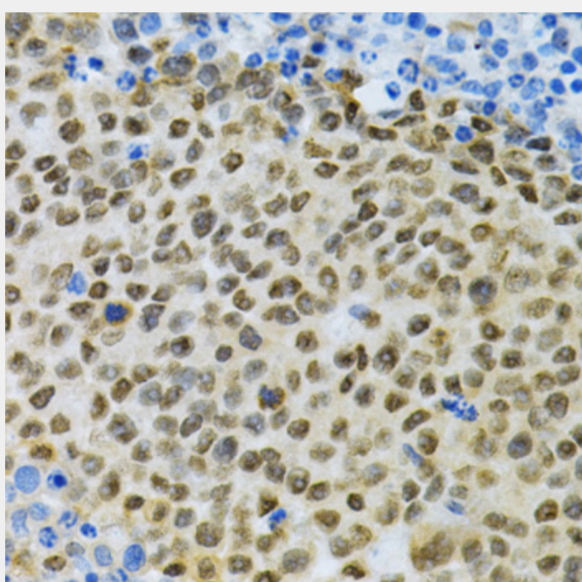
Immunohistochemistry of paraffin-embedded human kidney cancer using ELAVL1 Antibody at dilution of 1:100 (40x lens).



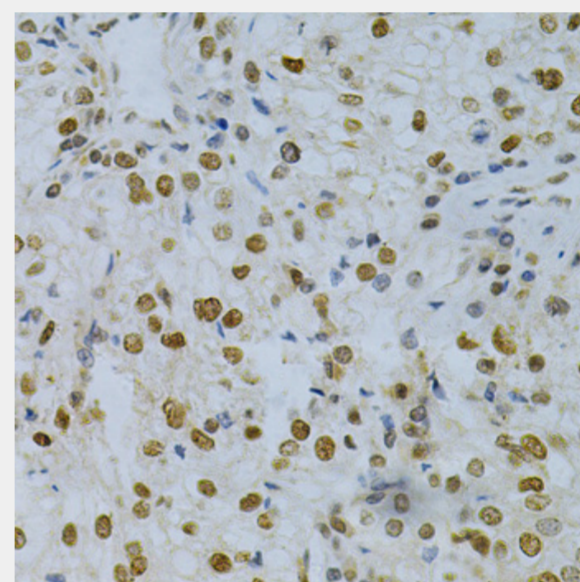
Immunohistochemistry of paraffin-embedded rat testis using ELAVL1 Antibody at dilution of 1:200 (40x lens).



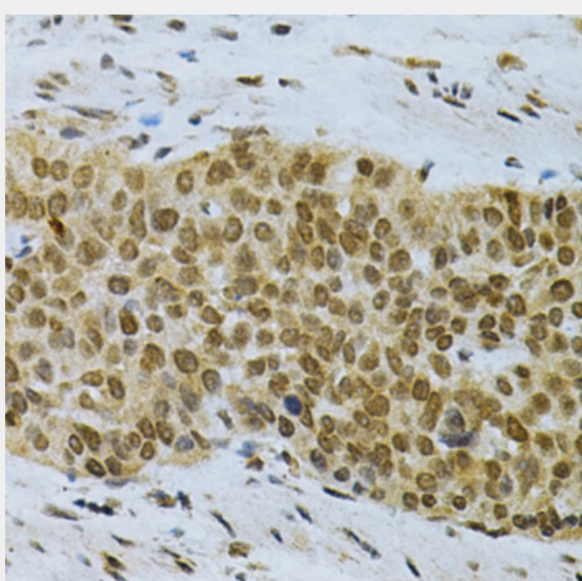
Immunohistochemistry of paraffin-embedded rat brain using ELAVL1 Antibody at dilution of 1:200 (40x lens).



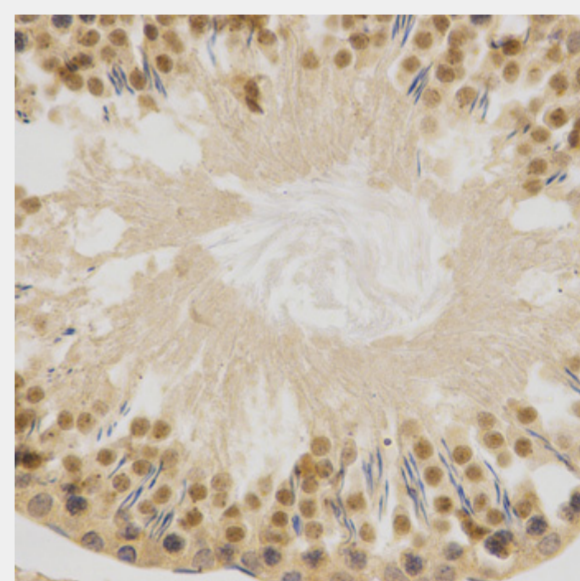
Immunohistochemistry of paraffin-embedded rat cancer using ELAVL1 Antibody at dilution of 1:200 (40x lens).



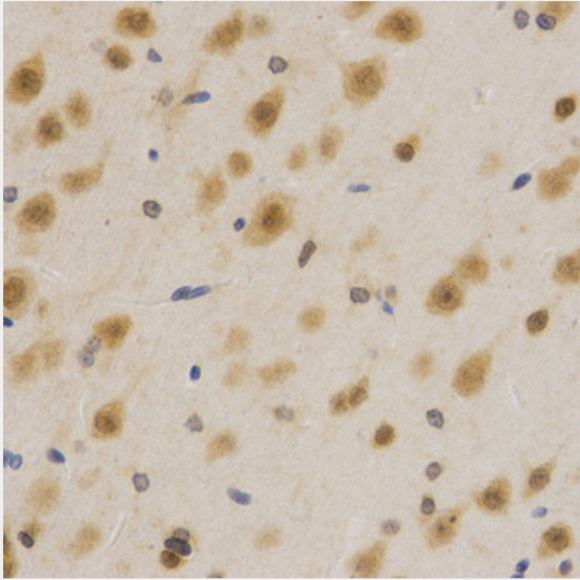
Immunohistochemistry of paraffin-embedded human kidney cancer using ELAVL1 Antibody at dilution of 1:200 (40x lens).



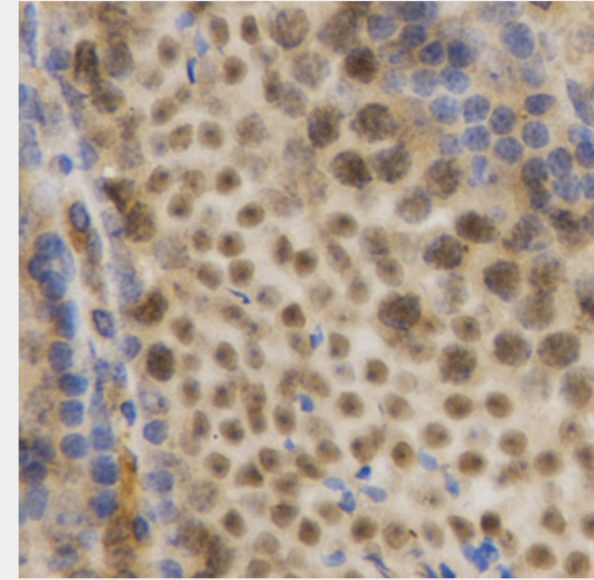
Immunohistochemistry of paraffin-embedded human esophageal cancer using ELAVL1 Antibody at dilution of 1:200 (40x lens).



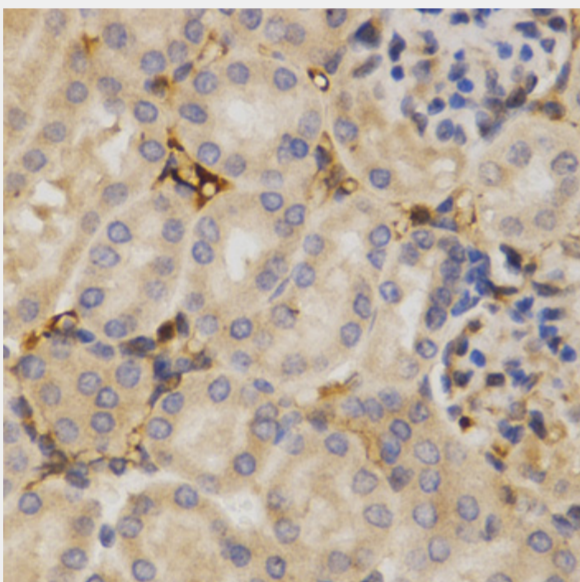
Immunohistochemistry of paraffin-embedded rat testis using ELAVL1 Antibody at dilution of 1:200 (40x lens).



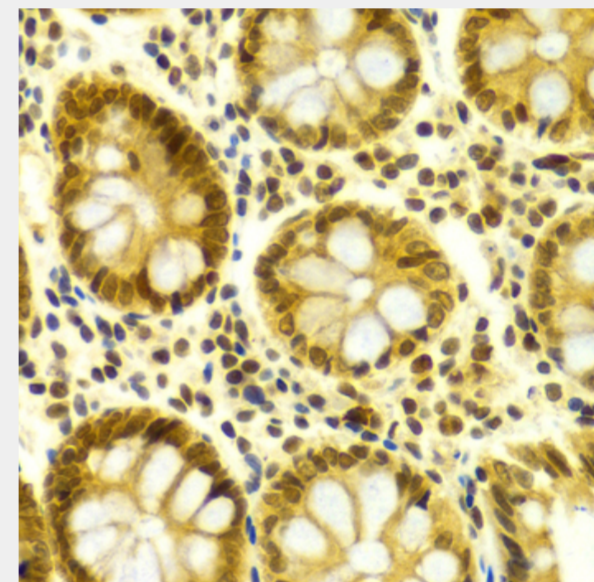
Immunohistochemistry of paraffin-embedded rat brain using ELAVL1 Antibody at dilution of 1:200 (40x lens).



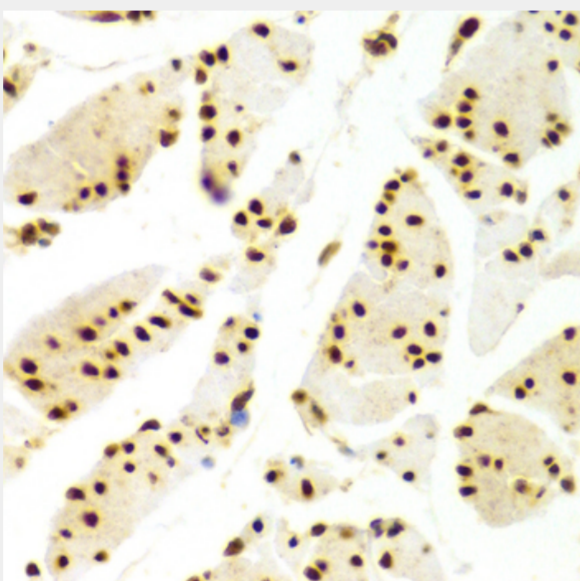
Immunohistochemistry of paraffin-embedded mouse testis using ELAVL1 Antibody at dilution of 1:200 (40x lens).



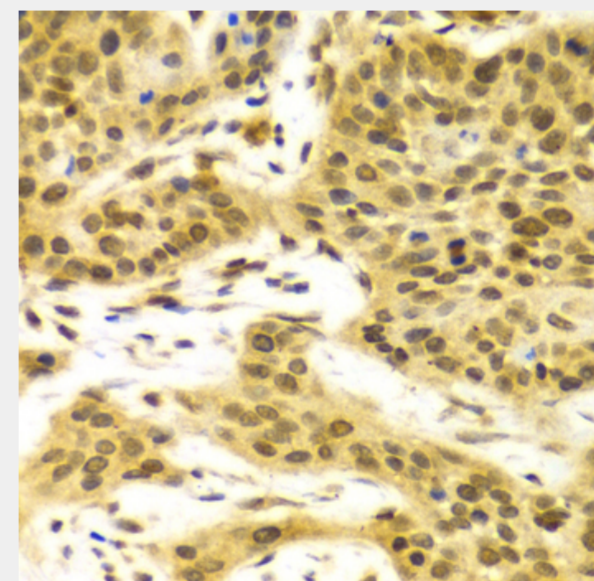
Immunohistochemistry of paraffin-embedded mouse kidney using ELAVL1 Antibody at dilution of 1:200 (40x lens).



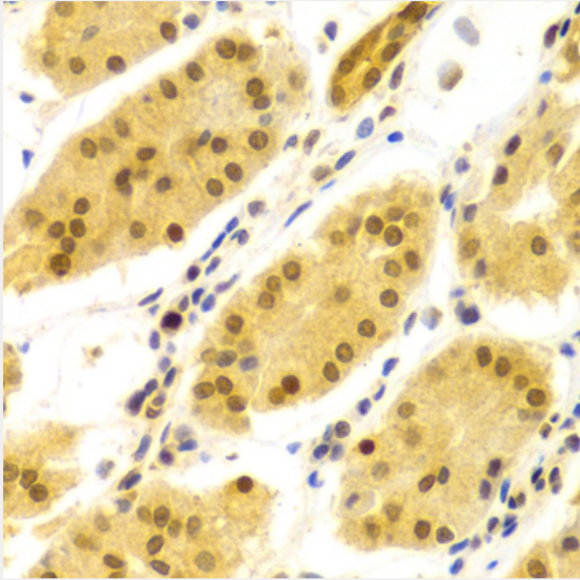
Immunohistochemistry of paraffin-embedded human colon using ELAVL1 Antibody at dilution of 1:100 (40x lens).



Immunohistochemistry of paraffin-embedded human esophagus using ELAVL1 Antibody at dilution of 1:100 (40x lens).



Immunohistochemistry of paraffin-embedded human esophageal cancer using ELAVL1 Antibody at dilution of 1:100 (40x lens).



Immunohistochemistry of paraffin-embedded human stomach using ELAVL1
Antibody at dilution of 1:100 (40x lens).

All products are for RESEARCH USE ONLY. Not for diagnostic & therapeutic purposes!