

Anti EDF1 Antibody

Catalog No: tcsa16683



Available Sizes

Size: 100µl



Specifications

Application:

WB, IHC

Species Reactivity:

Human, Mouse, Rat

Host Species:

Rabbit

Immunogen / Amino acids:

Recombinant protein of human EDF1

Conjugation:

Unconjugated

Clonality:

Polyclonal

Isotype:

IgG

Form:

Liquid

Storage Buffer:

PBS with 0.02% sodium azide, 50% glycerol, pH7.3.

Recommended Dilution:

WB 1:500 - 1:2000

IHC 1:50 - 1:200

Storage Instruction:

Store at -20C. Avoid freeze / thaw cycles.

Alternative Names:

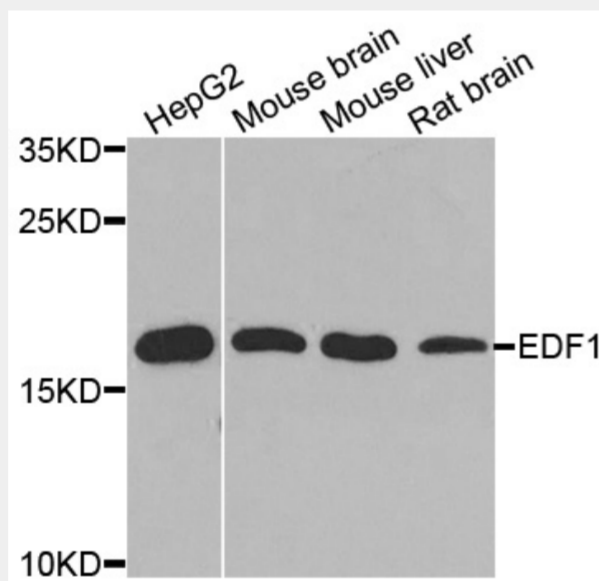
EDF1 antibody; Endothelial differentiation-related factor 1 antibody; EDF-1 antibody; Multiprotein-bridging factor 1 antibody; MBF1 antibody; EDF1 antibody

SwissProt:

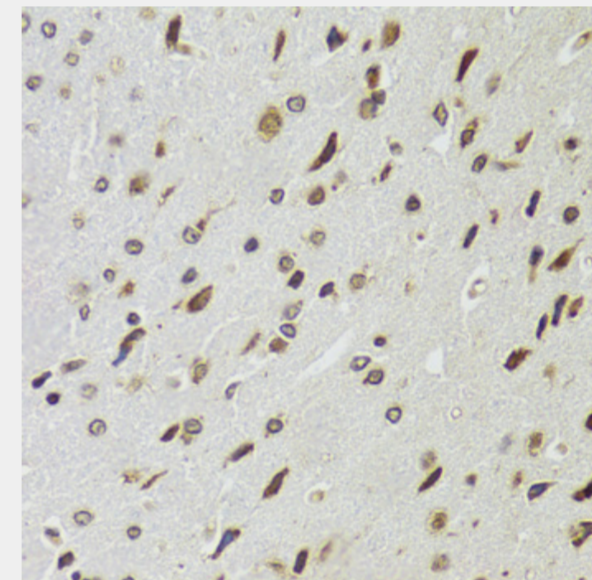
O60869

Product Description

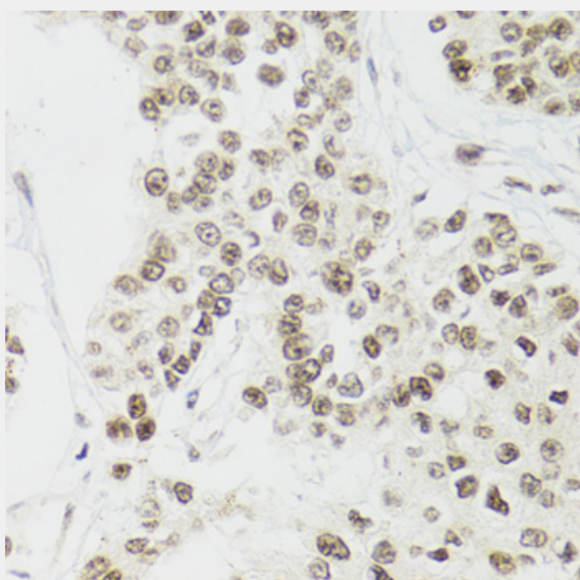
This gene encodes a protein that may regulate endothelial cell differentiation, lipid metabolism, and hormone-induced cardiomyocyte hypertrophy. The encoded protein has also been found to act as a transcriptional coactivator by interconnecting the general transcription factor TATA element-binding protein (TBP) and gene-specific activators. Alternate splicing results in multiple transcript variants.



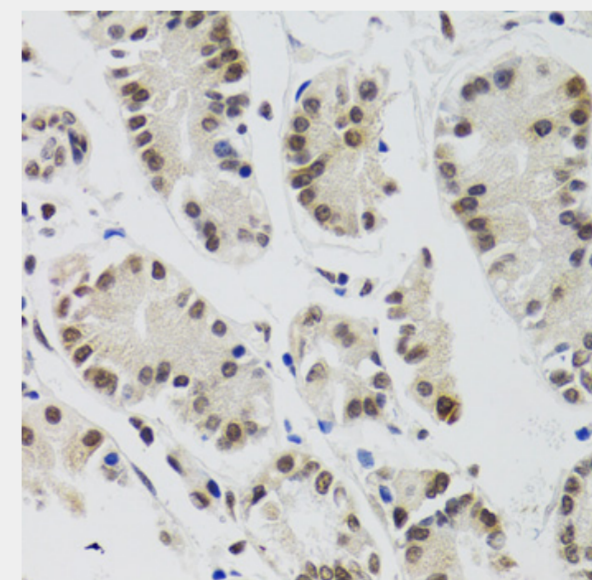
Western blot analysis of extracts of various cell lines, using EDF1 antibody at 1:1000 dilution. Secondary antibody: HRP Goat Anti-Rabbit IgG (H+L) at 1:10000 dilution. Lysates/proteins: 25ug per lane. Blocking buffer: 3% nonfat dry milk in TBST. Detection: ECL Basic Kit. Exposure time: 90s.



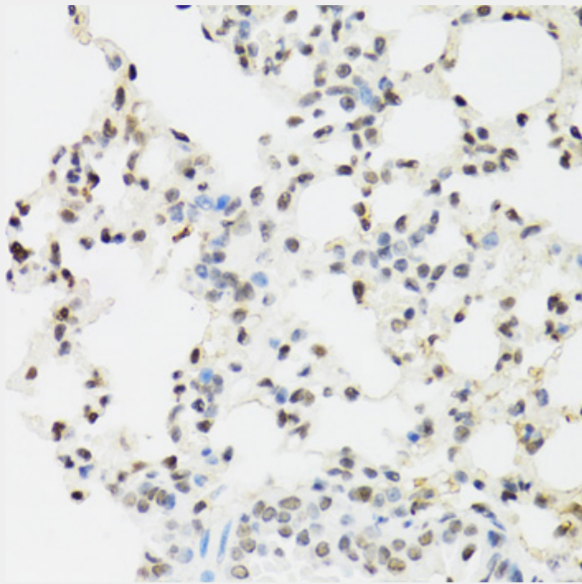
Immunohistochemistry of paraffin-embedded rat brain using EDF1 antibody at dilution of 1:100 (40x lens).



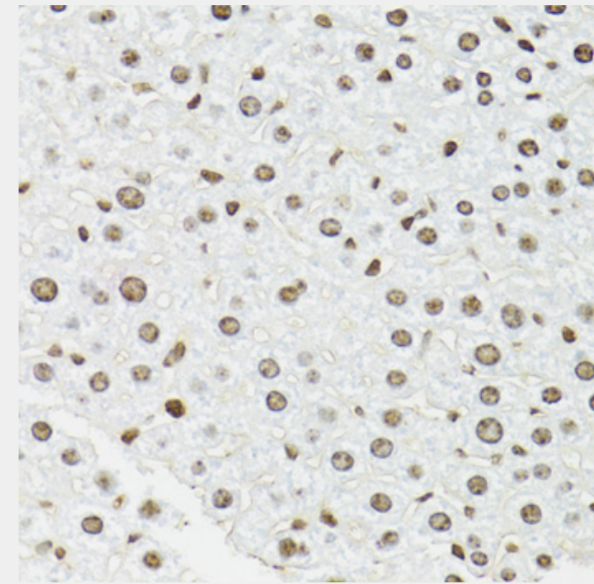
Immunohistochemistry of paraffin-embedded human esophageal cancer using EDF1 antibody at dilution of 1:100 (40x lens).



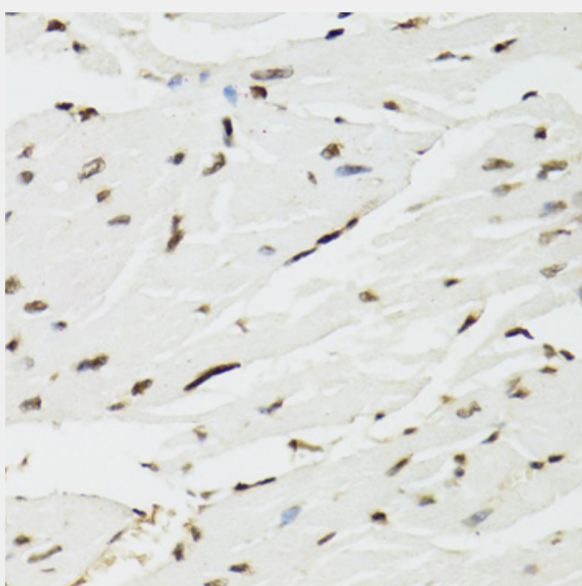
Immunohistochemistry of paraffin-embedded human gastric cancer using EDF1 antibody at dilution of 1:100 (40x lens).



Immunohistochemistry of paraffin-embedded mouse lung using EDF1 antibody at dilution of 1:100 (40x lens).



Immunohistochemistry of paraffin-embedded mouse liver using EDF1 antibody at dilution of 1:100 (40x lens).



Immunohistochemistry of paraffin-embedded mouse heart using EDF1 antibody at dilution of 1:100 (40x lens).

All products are for RESEARCH USE ONLY. Not for diagnostic & therapeutic purposes!