

# Anti DNMT3A Antibody

Catalog No: tcsa16648



## Available Sizes

---

**Size:** 100µl



## Specifications

---

**Application:**

WB, IHC, IF

**Species Reactivity:**

Human, Mouse, Rat

**Host Species:**

Rabbit

**Immunogen / Amino acids:**

Recombinant protein of human DNMT3A

**Conjugation:**

Unconjugated

**Clonality:**

Polyclonal

**Isotype:**

IgG

**Form:**

Liquid

**Storage Buffer:**

PBS with 0.02% sodium azide, 50% glycerol, pH7.3.

**Recommended Dilution:**

WB 1:500 - 1:2000

IHC 1:50 - 1:200

IF 1:50 - 1:200

**Storage Instruction:**

Store at -20C. Avoid freeze / thaw cycles.

**Alternative Names:**

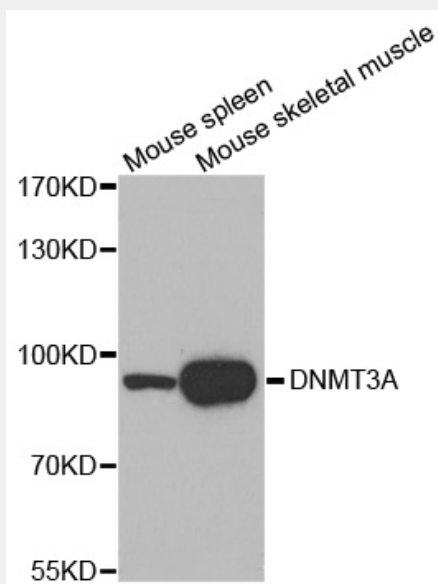
DNMT3A antibody; DNA antibody; cytosine-5 antibody; -methyltransferase 3A antibody; Dnmt3a antibody; DNMT3A antibody

**SwissProt:**

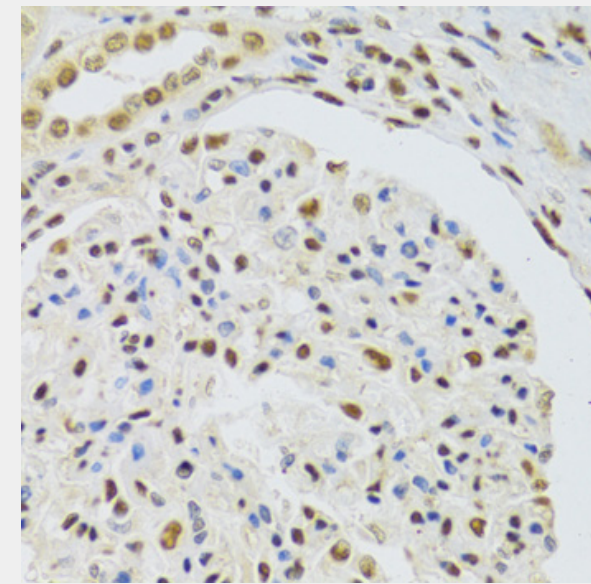
Q9Y6K1

**Product Description**

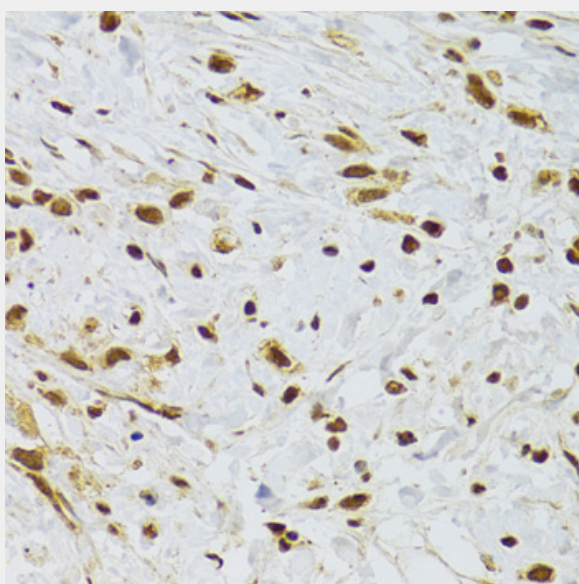
CpG methylation is an epigenetic modification that is important for embryonic development, imprinting, and X-chromosome inactivation. Studies in mice have demonstrated that DNA methylation is required for mammalian development. This gene encodes a DNA methyltransferase that is thought to function in de novo methylation, rather than maintenance methylation. The protein localizes to the cytoplasm and nucleus and its expression is developmentally regulated.



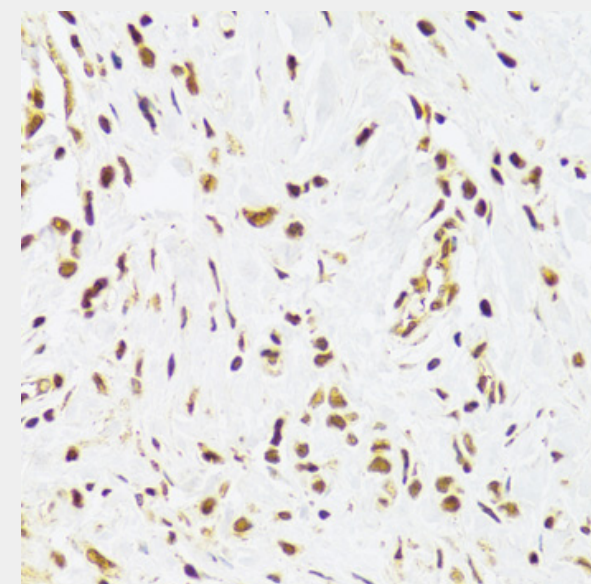
Western blot analysis of extracts of various cell lines, using DNMT3A antibody.  
Secondary antibody: HRP Goat Anti-Rabbit IgG (H+L) at 1:10000 dilution.  
Lysates/proteins: 25ug per lane. Blocking buffer: 3% nonfat dry milk in TBST.  
Detection: ECL Basic Kit. Exposure time: 90s.



Immunohistochemistry of paraffin-embedded human kidney using DNMT3A Antibody at dilution of 1:100 (40x lens).

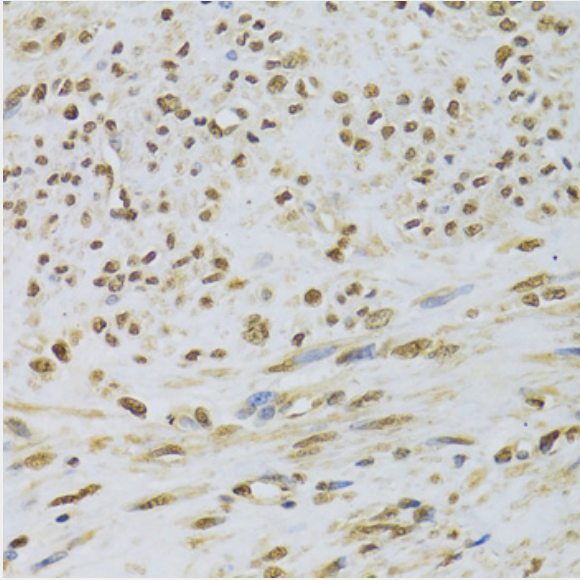


Immunohistochemistry of paraffin-embedded human stomach using DNMT3A Antibody at dilution of 1:100 (40x lens).

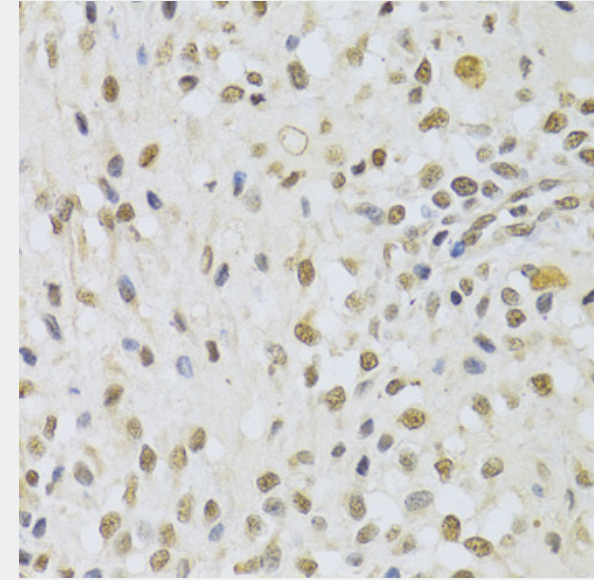


Immunohistochemistry of paraffin-embedded human gastric cancer using DNMT3A Antibody at dilution of 1:100 (40x lens).

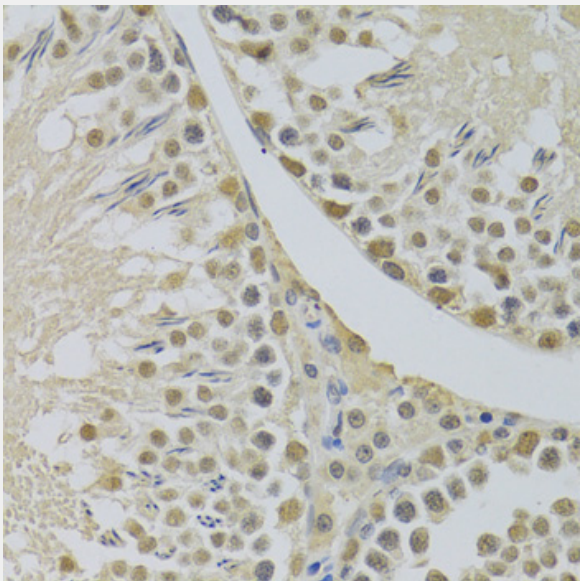




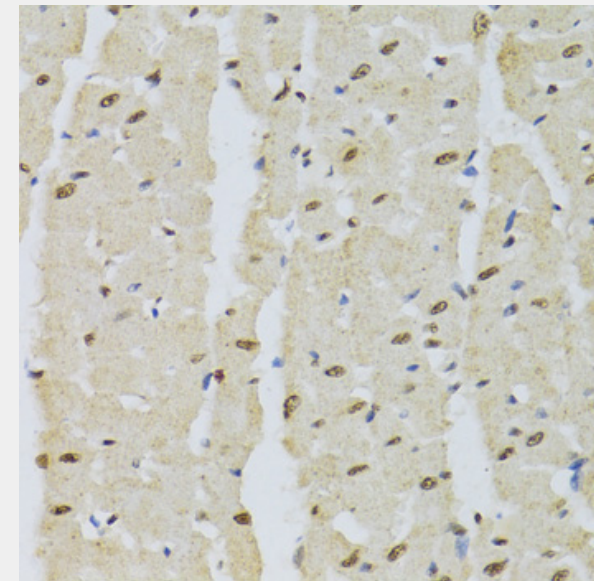
Immunohistochemistry of paraffin-embedded human uterus using DNMT3A Antibody at dilution of 1:100 (40x lens).



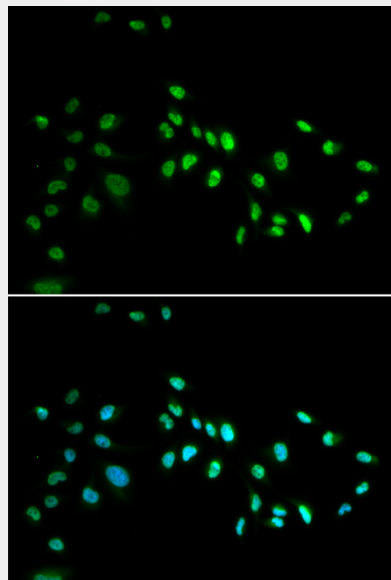
Immunohistochemistry of paraffin-embedded human uterine cancer using DNMT3A Antibody at dilution of 1:100 (40x lens).



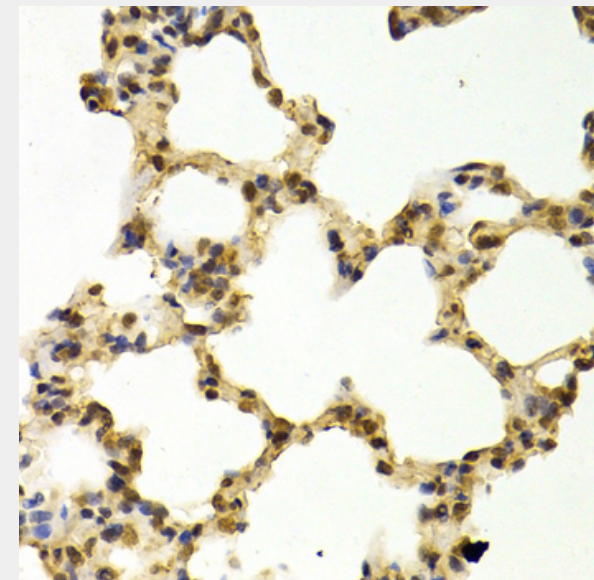
Immunohistochemistry of paraffin-embedded mouse testis using DNMT3A Antibody at dilution of 1:100 (40x lens).



Immunohistochemistry of paraffin-embedded mouse heart using DNMT3A Antibody at dilution of 1:100 (40x lens).

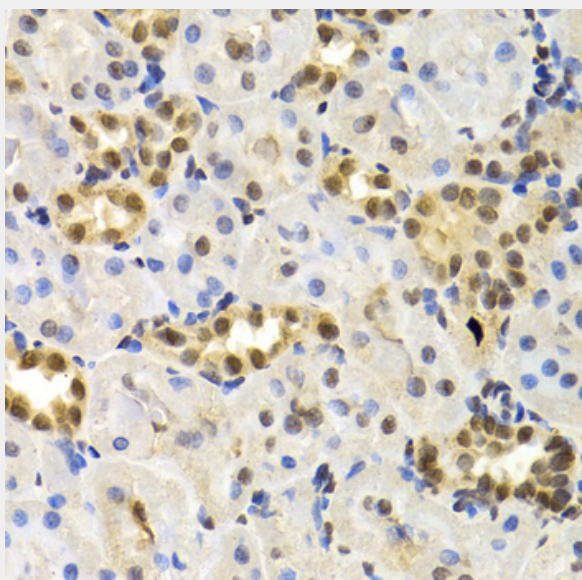


Immunofluorescence analysis of A549 cells using DNMT3A antibody.

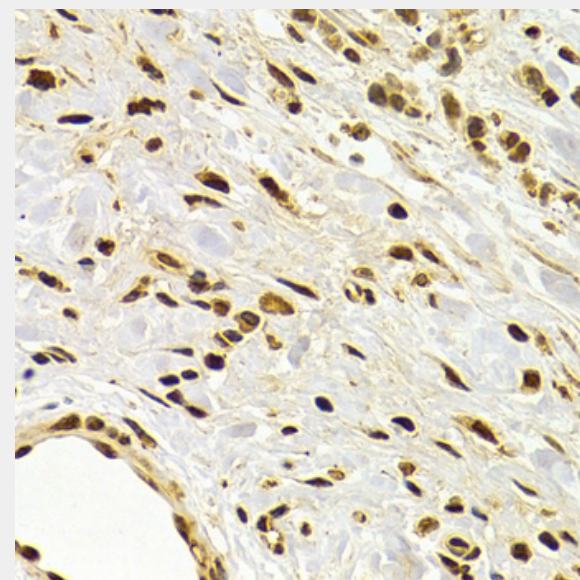


Immunohistochemistry of paraffin-embedded rat lung using DNMT3A Antibody at dilution of 1:100 (40x lens).

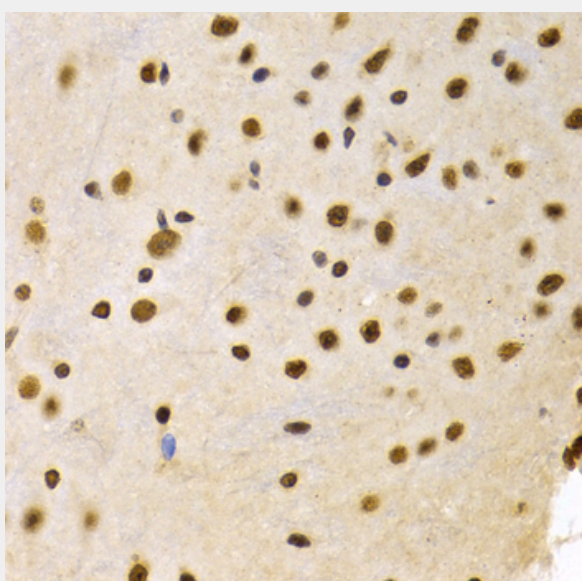




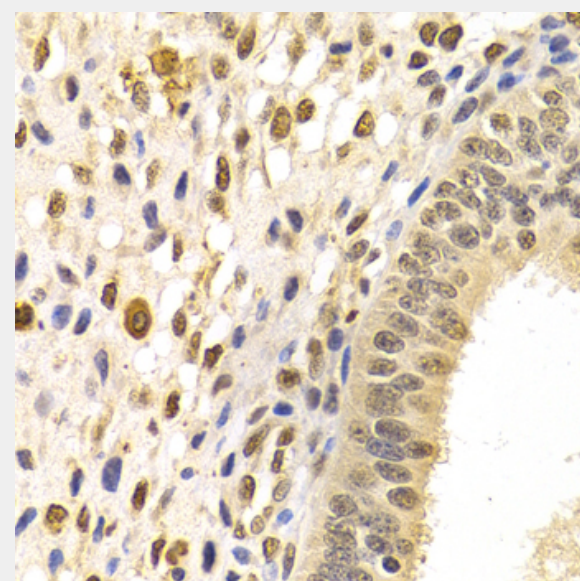
Immunohistochemistry of paraffin-embedded rat kidney using DNMT3A Antibody at dilution of 1:100 (40x lens).



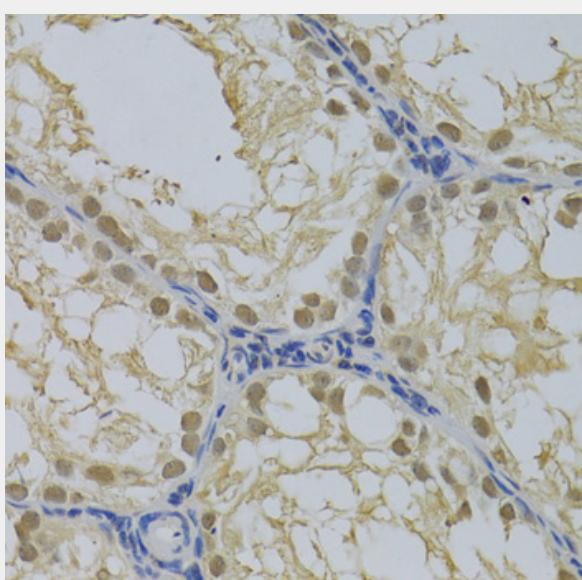
Immunohistochemistry of paraffin-embedded human gastric cancer using DNMT3A Antibody at dilution of 1:100 (40x lens).



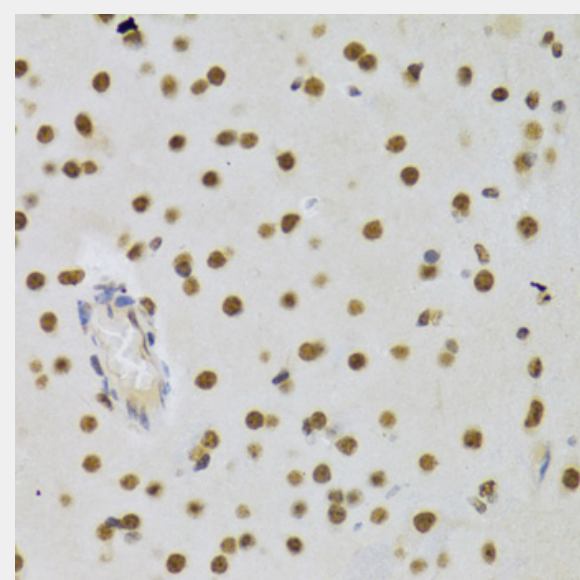
Immunohistochemistry of paraffin-embedded mouse brain using DNMT3A Antibody at dilution of 1:100 (40x lens).



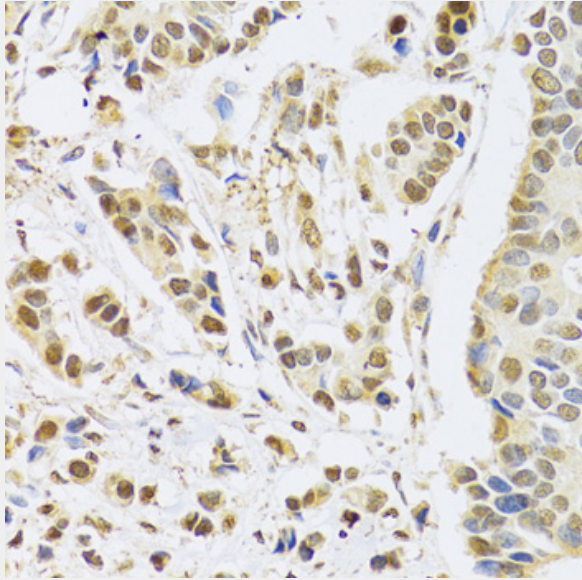
Immunohistochemistry of paraffin-embedded human uterine cancer using DNMT3A Antibody at dilution of 1:100 (40x lens).



Immunohistochemistry of paraffin-embedded rat testis using DNMT3A Antibody at dilution of 1:100 (40x lens).



Immunohistochemistry of paraffin-embedded rat brain using DNMT3A Antibody at dilution of 1:100 (40x lens).



Immunohistochemistry of paraffin-embedded human breast cancer using DNMT3A Antibody at dilution of 1:100 (40x lens).

All products are for RESEARCH USE ONLY. Not for diagnostic & therapeutic purposes!