

Anti DKC1 Antibody

Catalog No: tcsa16628



Available Sizes

Size: 100µl



Specifications

Application:

WB, IHC, IF

Species Reactivity:

Human, Mouse, Rat

Host Species:

Rabbit

Immunogen / Amino acids:

Recombinant protein of human DKC1

Conjugation:

Unconjugated

Clonality:

Polyclonal

Isotype:

IgG

Form:

Liquid

Storage Buffer:

PBS with 0.02% sodium azide, 50% glycerol, pH7.3.

Recommended Dilution:

WB 1:500 - 1:2000

IHC 1:50 - 1:200

IF 1:50 - 1:200

Storage Instruction:

Store at -20C. Avoid freeze / thaw cycles.

Alternative Names:

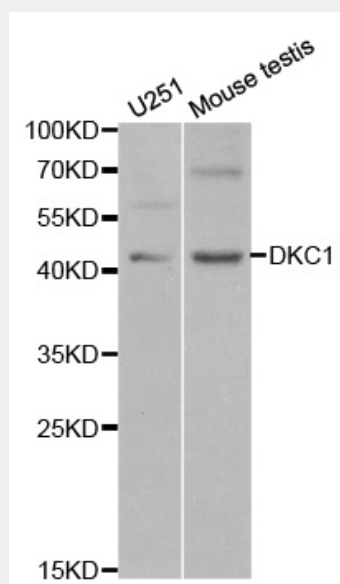
DKC1 antibody; H/ACA ribonucleoprotein complex subunit 4 antibody; DKC1 antibody; NOLA4 antibody

SwissProt:

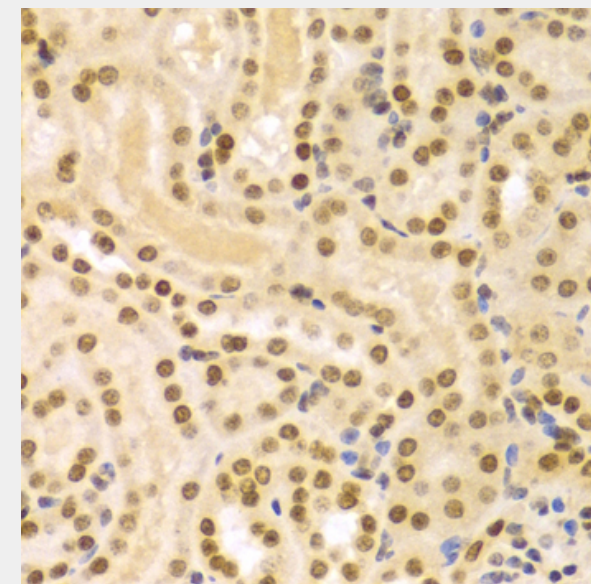
O60832

Product Description

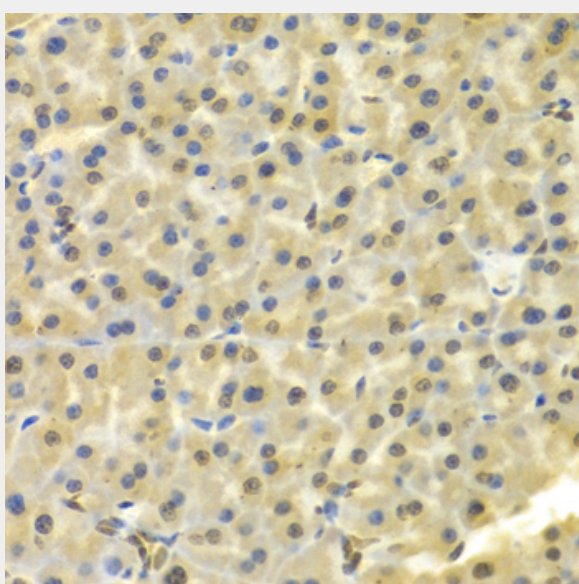
This gene functions in two distinct complexes. It plays an active role in telomerase stabilization and maintenance, as well as recognition of snoRNAs containing H/ACA sequences which provides stability during biogenesis and assembly into H/ACA small nucleolar RNA ribonucleoproteins (snoRNPs). This gene is highly conserved and widely expressed, and may play additional roles in nucleo-cytoplasmic shuttling, DNA damage response, and cell adhesion. Mutations have been associated with X-linked dyskeratosis congenita. Alternative splicing results in multiple transcript variants.



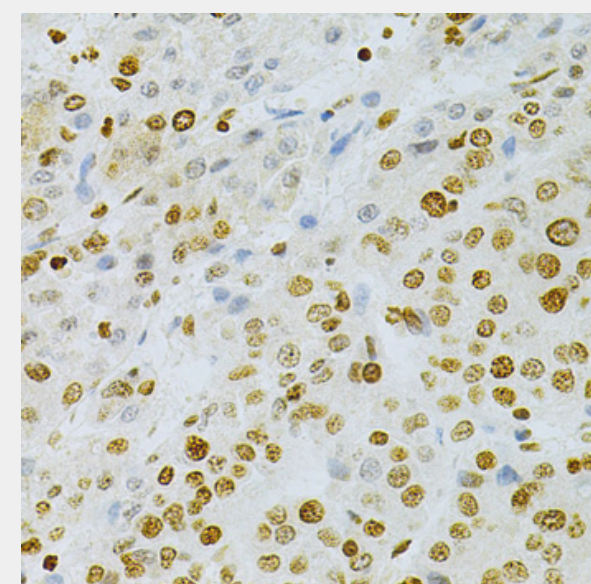
Western blot analysis of extracts of various cell lines, using DKC1 antibody at 1:1000 dilution. Secondary antibody: HRP Goat Anti-Rabbit IgG (H+L) at 1:10000 dilution. Lysates/proteins: 25ug per lane. Blocking buffer: 3% nonfat dry milk in TBST.



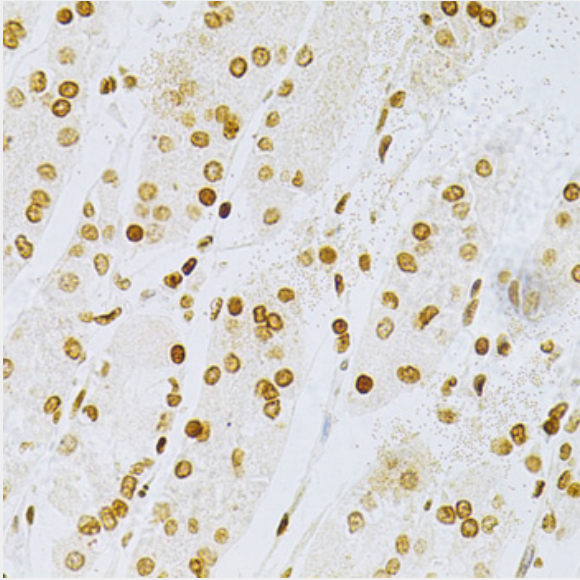
Immunohistochemistry of paraffin-embedded mouse kidney using DKC1 Antibody at dilution of 1:100 (40x lens).



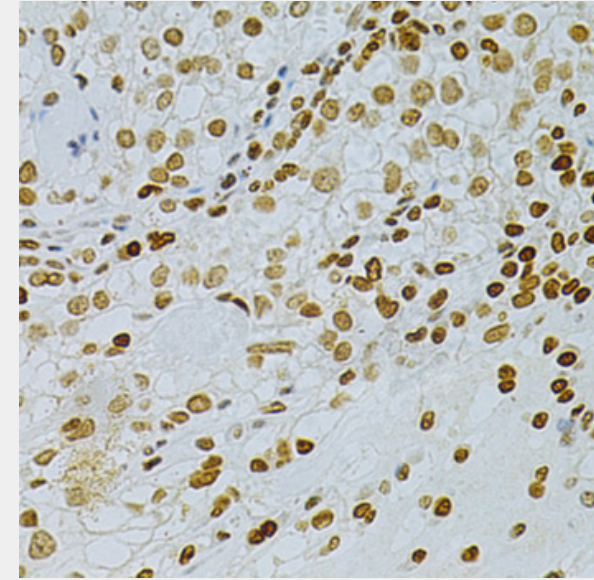
Immunohistochemistry of paraffin-embedded mouse pancreas using DKC1 Antibody at dilution of 1:100 (40x lens).



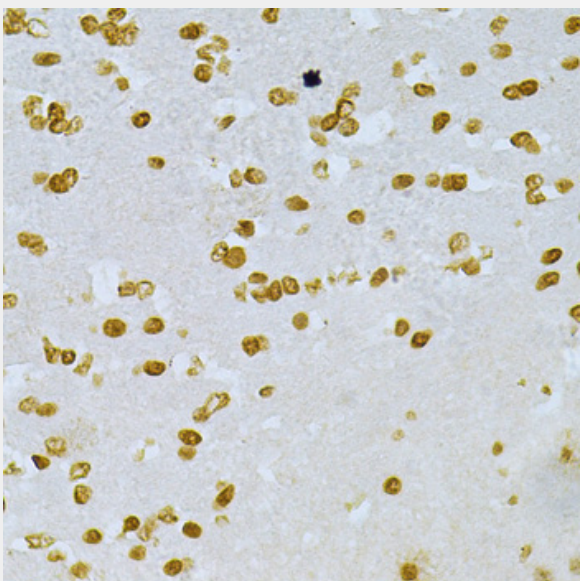
Immunohistochemistry of paraffin-embedded human liver cancer using DKC1 Antibody at dilution of 1:200 (40x lens).



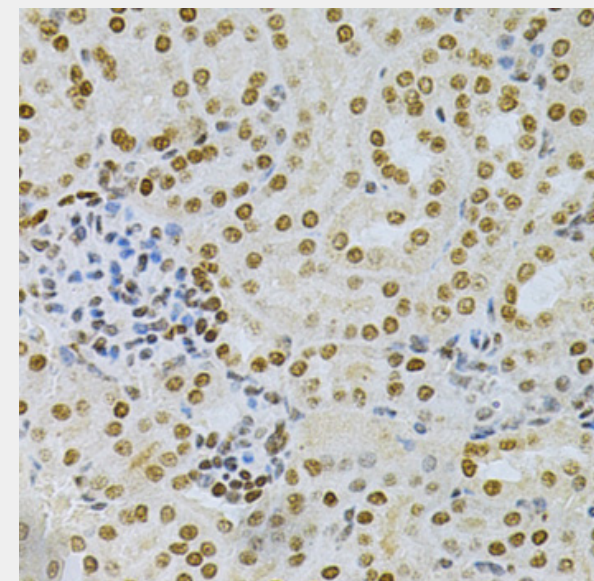
Immunohistochemistry of paraffin-embedded human stomach using DKC1 Antibody at dilution of 1:200 (40x lens).



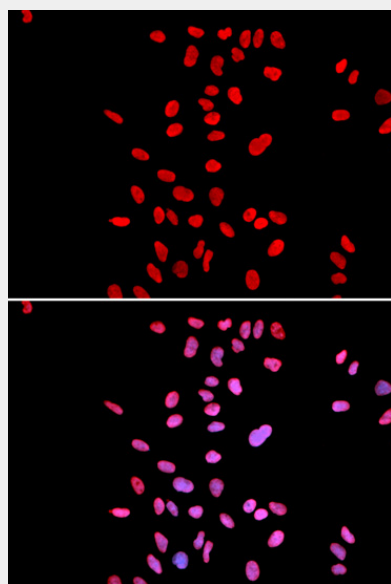
Immunohistochemistry of paraffin-embedded human cancer using DKC1 Antibody at dilution of 1:200 (40x lens).



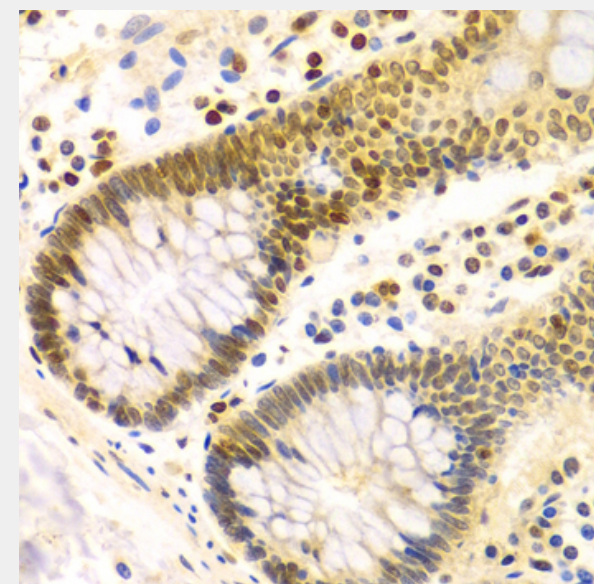
Immunohistochemistry of paraffin-embedded mouse brain using DKC1 Antibody at dilution of 1:200 (40x lens).



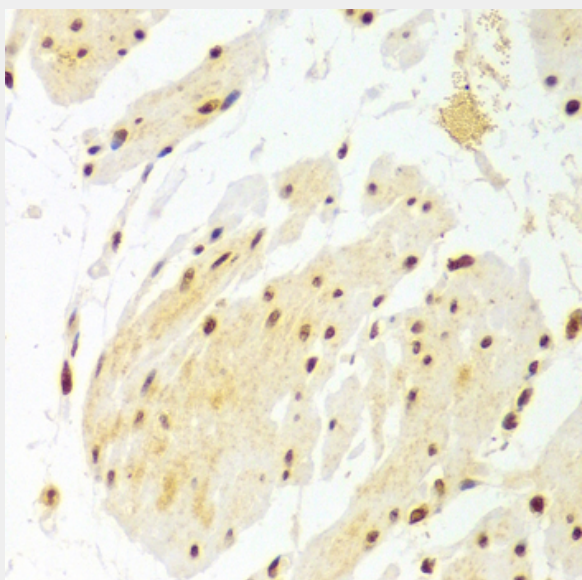
Immunohistochemistry of paraffin-embedded mouse kidney using DKC1 Antibody at dilution of 1:200 (40x lens).



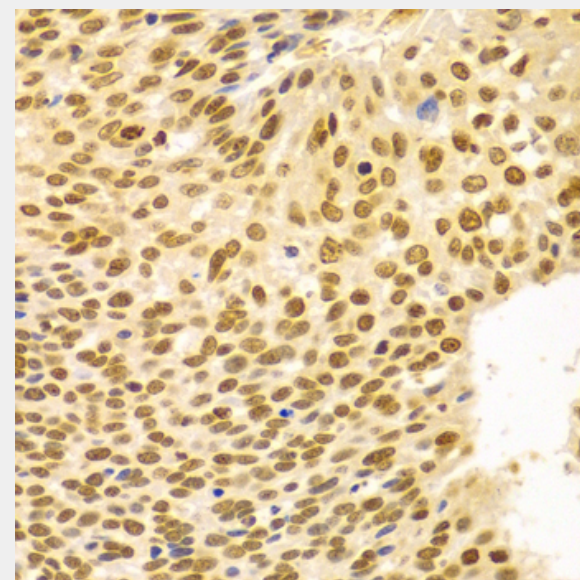
Immunofluorescence analysis of U2OS cells using DKC1 antibody. Blue: DAPI for nuclear staining.



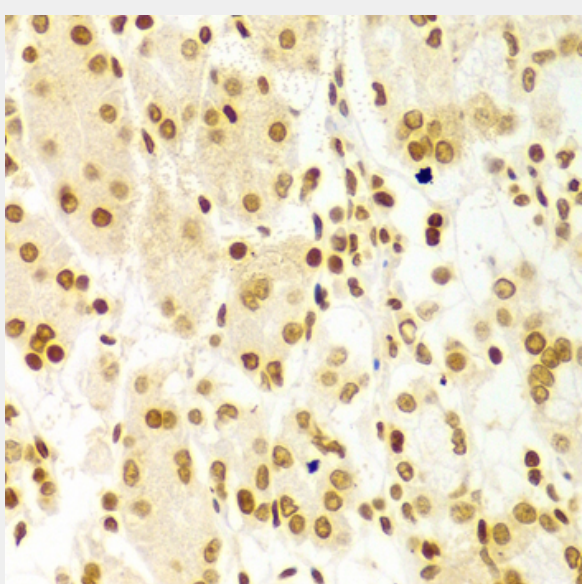
Immunohistochemistry of paraffin-embedded human colon using DKC1 Antibody at dilution of 1:100 (40x lens).



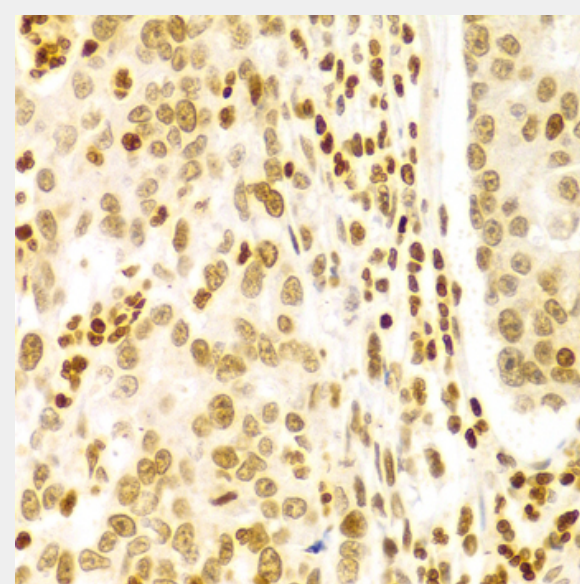
Immunohistochemistry of paraffin-embedded human esophagus using DKC1 Antibody at dilution of 1:100 (40x lens).



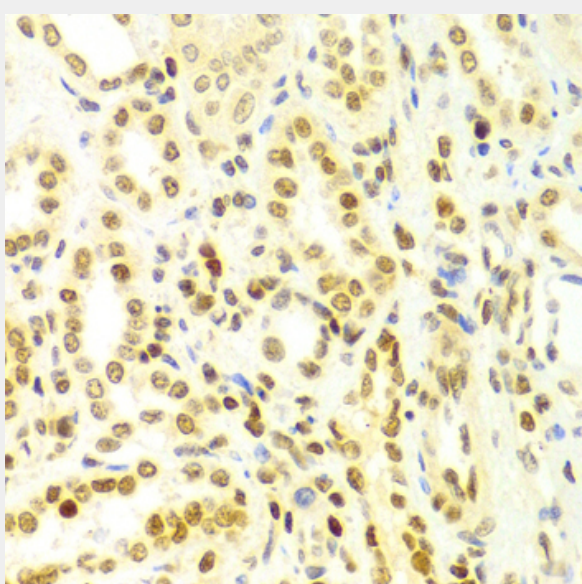
Immunohistochemistry of paraffin-embedded human esophageal cancer using DKC1 Antibody at dilution of 1:100 (40x lens).



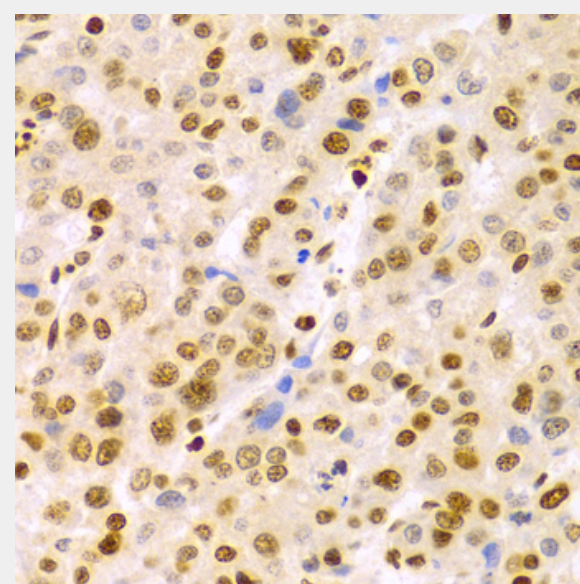
Immunohistochemistry of paraffin-embedded human stomach using DKC1 Antibody at dilution of 1:100 (40x lens).



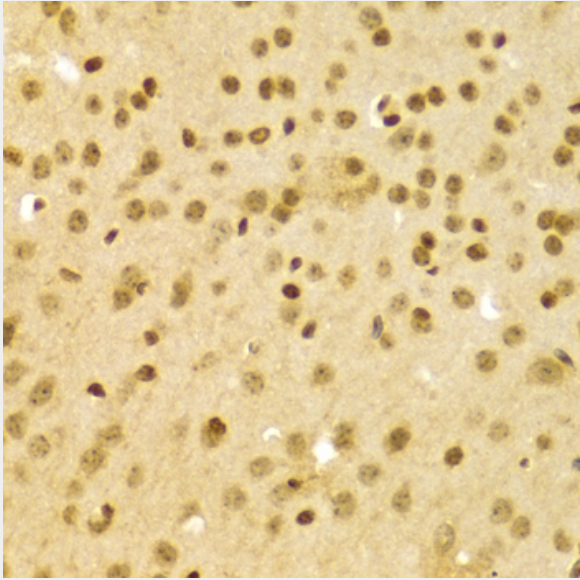
Immunohistochemistry of paraffin-embedded human gastric cancer using DKC1 Antibody at dilution of 1:100 (40x lens).



Immunohistochemistry of paraffin-embedded human kidney using DKC1 Antibody at dilution of 1:100 (40x lens).



Immunohistochemistry of paraffin-embedded human liver cancer using DKC1 Antibody at dilution of 1:100 (40x lens).



Immunohistochemistry of paraffin-embedded mouse brain using DKC1 Antibody at dilution of 1:100 (40x lens).

All products are for RESEARCH USE ONLY. Not for diagnostic & therapeutic purposes!