

Anti CYP24A1 Antibody

Catalog No: tcsa16587



Available Sizes

Size: 100µl



Specifications

Application:

WB, IHC

Species Reactivity:

Human, Mouse, Rat

Host Species:

Rabbit

Immunogen / Amino acids:

Recombinant protein of human CYP24A1

Conjugation:

Unconjugated

Clonality:

Polyclonal

Isotype:

IgG

Form:

Liquid

Storage Buffer:

PBS with 0.02% sodium azide, 50% glycerol, pH7.3.

Recommended Dilution:

WB 1:500 - 1:2000

IHC 1:50 - 1:200

Storage Instruction:

Store at -20C. Avoid freeze / thaw cycles.

Alternative Names:

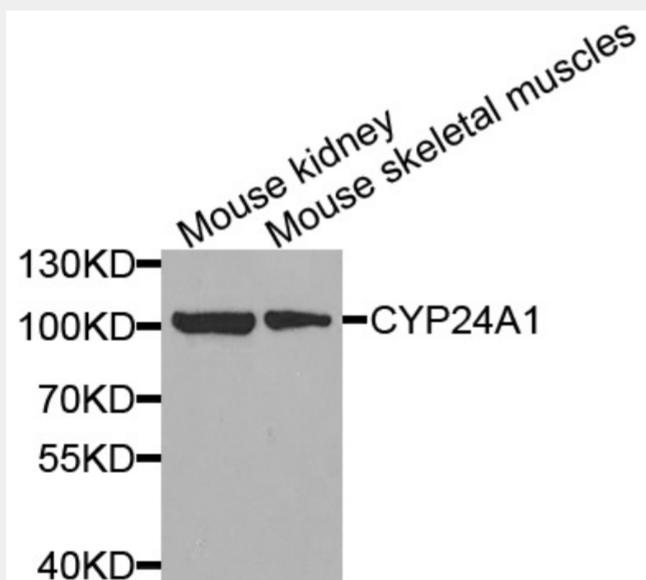
CYP24A1 antibody; 1,25-dihydroxyvitamin D3 antibody; 24-hydroxylase antibody; mitochondrial antibody; 24-OHase antibody; Vitamin D3 antibody; 24-hydroxylase antibody; CYP24A1 antibody; CYP24 antibody

SwissProt:

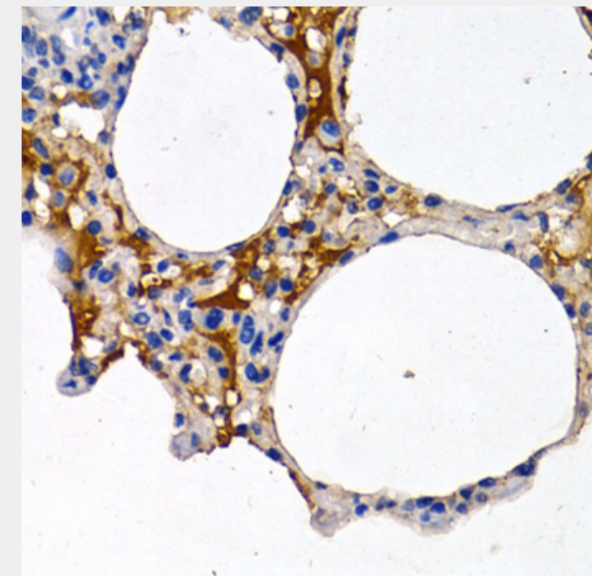
Q07973

Product Description

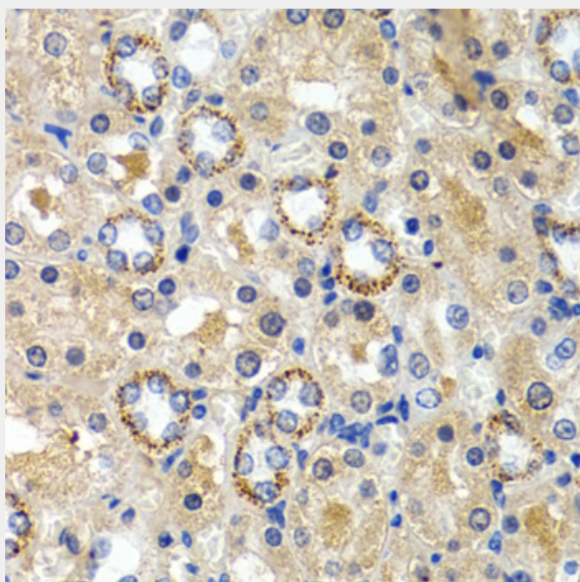
This gene encodes a member of the cytochrome P450 superfamily of enzymes. The cytochrome P450 proteins are monooxygenases which catalyze many reactions involved in drug metabolism and synthesis of cholesterol, steroids and other lipids. This mitochondrial protein initiates the degradation of 1,25-dihydroxyvitamin D3, the physiologically active form of vitamin D3, by hydroxylation of the side chain. In regulating the level of vitamin D3, this enzyme plays a role in calcium homeostasis and the vitamin D endocrine system. Alternatively spliced transcript variants encoding different isoforms have been found for this gene.



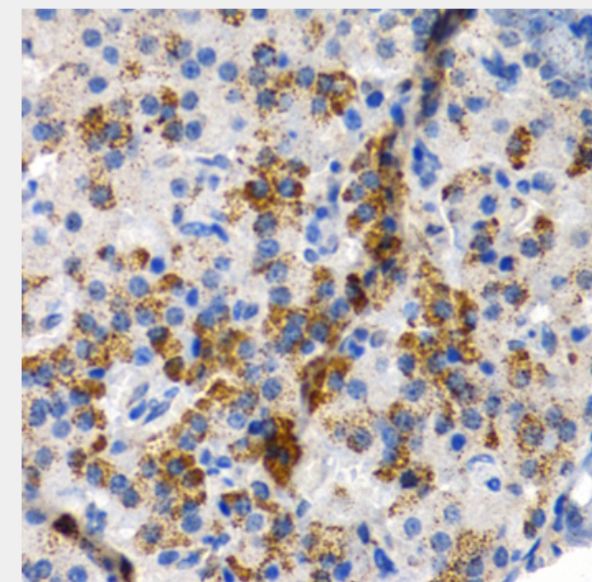
Western blot analysis of extracts of various cell lines, using CYP24A1 antibody at 1:1000 dilution. Secondary antibody: HRP Goat Anti-Rabbit IgG (H+L) at 1:10000 dilution. Lysates/proteins: 25ug per lane. Blocking buffer: 3% nonfat dry milk in TBST.



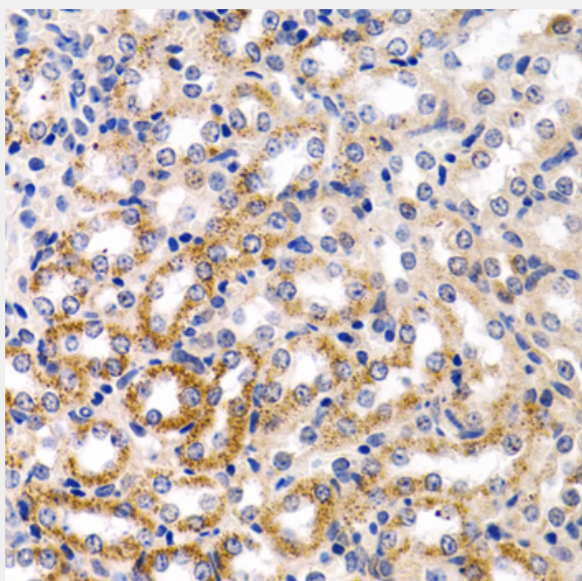
Immunohistochemistry of paraffin-embedded rat lung using CYP24A1 antibody at dilution of 1:200 (40x lens).



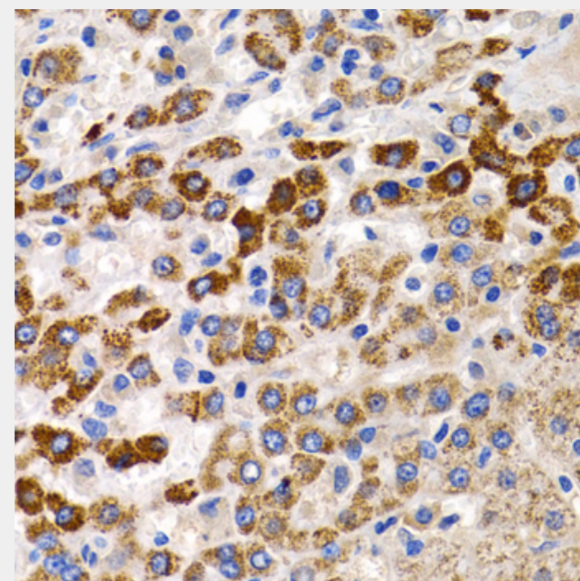
Immunohistochemistry of paraffin-embedded rat kidney using CYP24A1 antibody at dilution of 1:200 (40x lens).



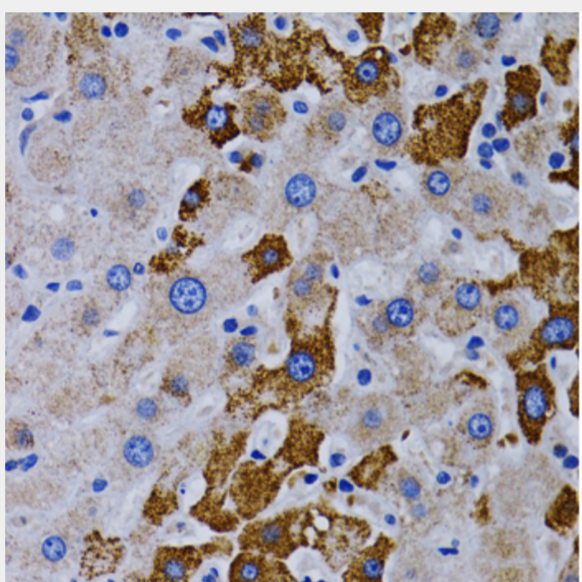
Immunohistochemistry of paraffin-embedded rat pancreas using CYP24A1 antibody at dilution of 1:200 (40x lens).



Immunohistochemistry of paraffin-embedded mouse kidney using CYP24A1 antibody at dilution of 1:200 (40x lens).



Immunohistochemistry of paraffin-embedded human liver cancer using CYP24A1 antibody at dilution of 1:200 (40x lens).



Immunohistochemistry of paraffin-embedded human liver cancer using CYP24A1 antibody at dilution of 1:200 (40x lens).

All products are for RESEARCH USE ONLY. Not for diagnostic & therapeutic purposes!