

# Anti CDK6 Antibody

Catalog No: tcsa16412



## Available Sizes

---

**Size:** 100µl

---



## Specifications

---

**Application:**

WB, IHC, IF

---

**Species Reactivity:**

Human, Mouse, Rat

---

**Host Species:**

Rabbit

---

**Immunogen / Amino acids:**

Recombinant protein of human CDK6

---

**Conjugation:**

Unconjugated

---

**Clonality:**

Polyclonal

---

**Isotype:**

IgG

---

**Form:**

Liquid

---

**Storage Buffer:**

PBS with 0.02% sodium azide, 50% glycerol, pH7.3.

---

**Recommended Dilution:**

WB 1:500 - 1:2000

IHC 1:50 - 1:200

IF 1:50 - 1:200

---

**Storage Instruction:**

Store at -20C. Avoid freeze / thaw cycles.

**Alternative Names:**

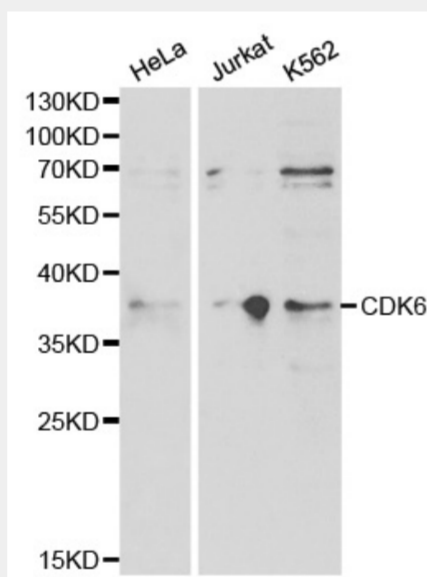
CDK6 antibody; Cyclin-dependent kinase 6 antibody; CDK6 antibody; CDKN6 antibody

**SwissProt:**

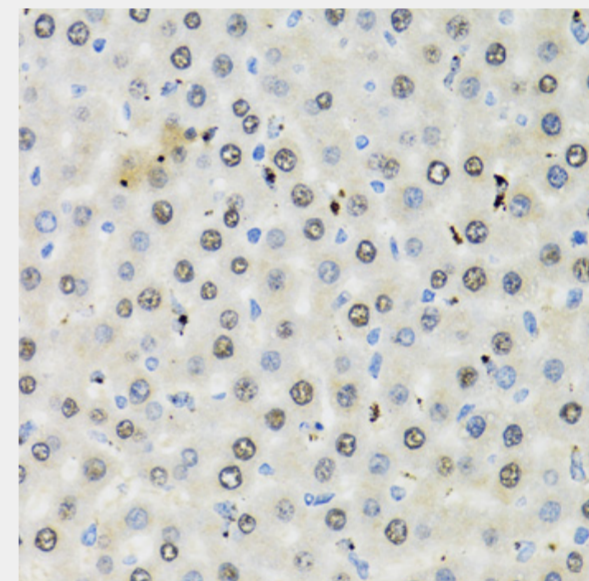
Q00534

**Product Description**

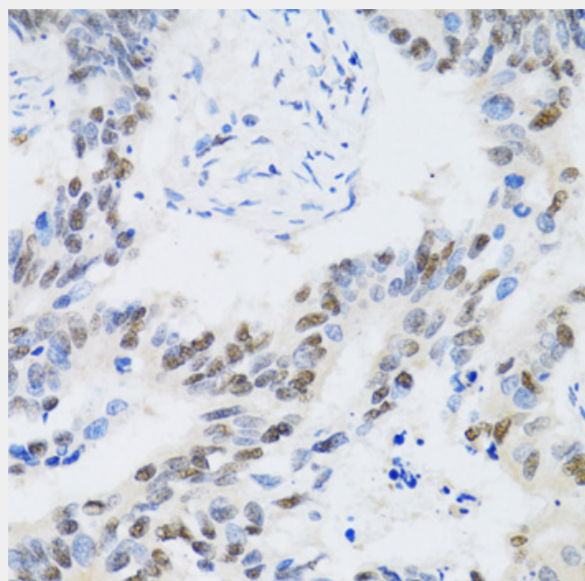
The protein encoded by this gene is a member of the cyclin-dependent protein kinase (CDK) family. CDK family members are highly similar to the gene products of *Saccharomyces cerevisiae* cdc28, and *Schizosaccharomyces pombe* cdc2, and are known to be important regulators of cell cycle progression. This kinase is a catalytic subunit of the protein kinase complex that is important for cell cycle G1 phase progression and G1/S transition. The activity of this kinase first appears in mid-G1 phase, which is controlled by the regulatory subunits including D-type cyclins and members of INK4 family of CDK inhibitors. This kinase, as well as CDK4, has been shown to phosphorylate, and thus regulate the activity of, tumor suppressor protein Rb. Expression of this gene is up-regulated in some types of cancer. Multiple alternatively spliced variants, encoding the same protein, have been identified.



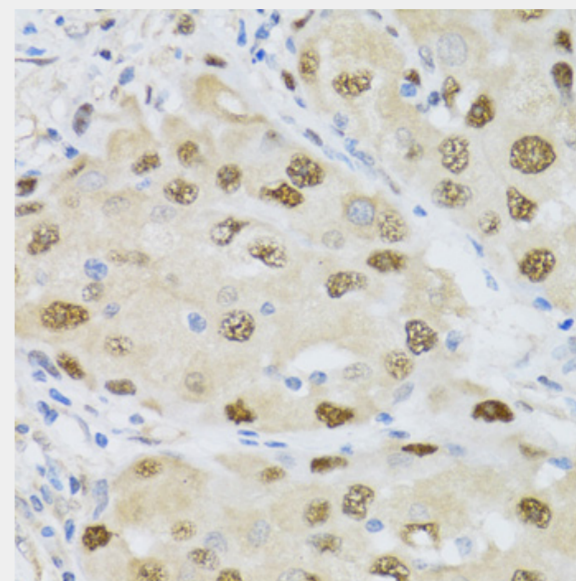
Western blot analysis of extracts of various cell lines, using CDK6 antibody at 1:1000 dilution. Secondary antibody: HRP Goat Anti-Rabbit IgG (H+L) at 1:10000 dilution. Lysates/proteins: 25ug per lane. Blocking buffer: 3% nonfat dry milk in TBST.



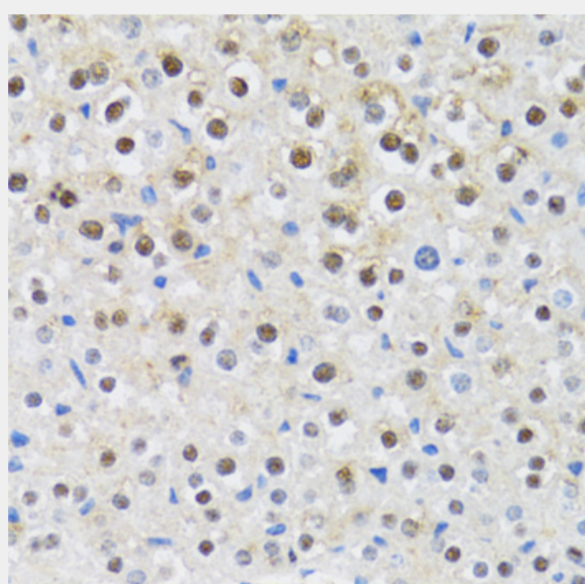
Immunohistochemistry of paraffin-embedded rat liver using CDK6 antibody at dilution of 1:100 (40x lens).



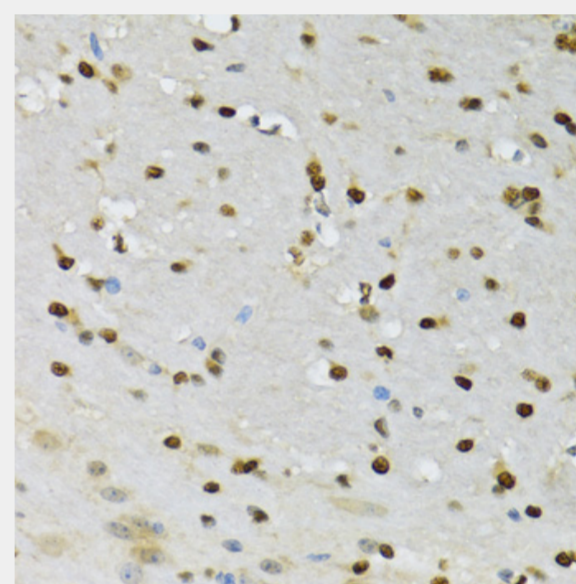
Immunohistochemistry of paraffin-embedded human colon carcinoma using CDK6 antibody at dilution of 1:100 (40x lens).



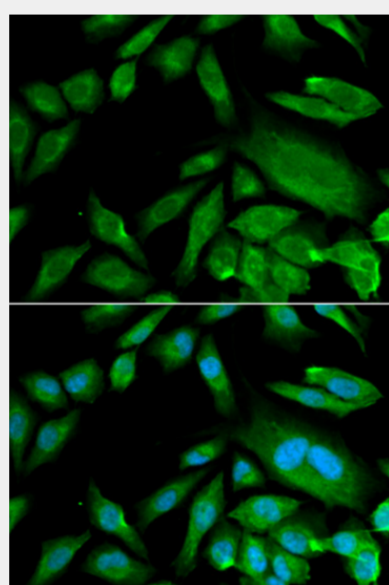
Immunohistochemistry of paraffin-embedded human breast cancer using CDK6 antibody at dilution of 1:100 (40x lens).



Immunohistochemistry of paraffin-embedded mouse liver using CDK6 antibody at dilution of 1:100 (40x lens).



Immunohistochemistry of paraffin-embedded mouse brain using CDK6 antibody at dilution of 1:100 (40x lens).



Immunofluorescence analysis of MCF-7 cells using CDK6 antibody. Blue: DAPI for nuclear staining.

All products are for RESEARCH USE ONLY. Not for diagnostic & therapeutic purposes!